

C 881237

G

F

E

D

C

B

A

8

7

6

5

4

3

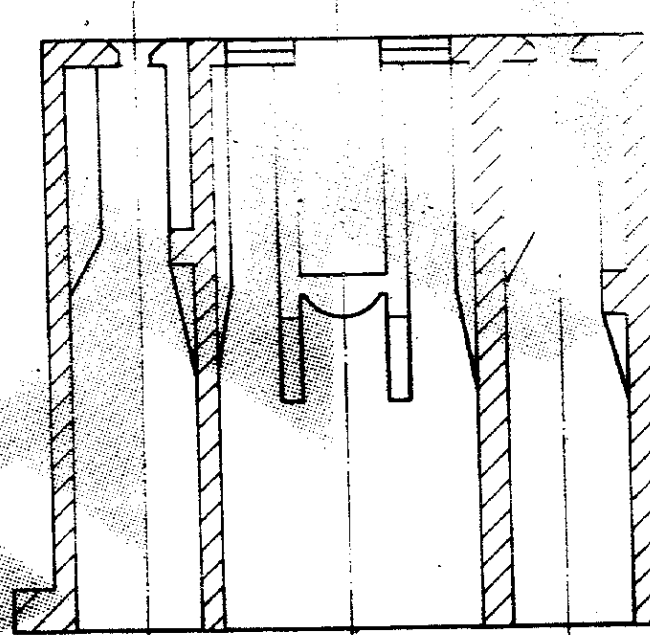
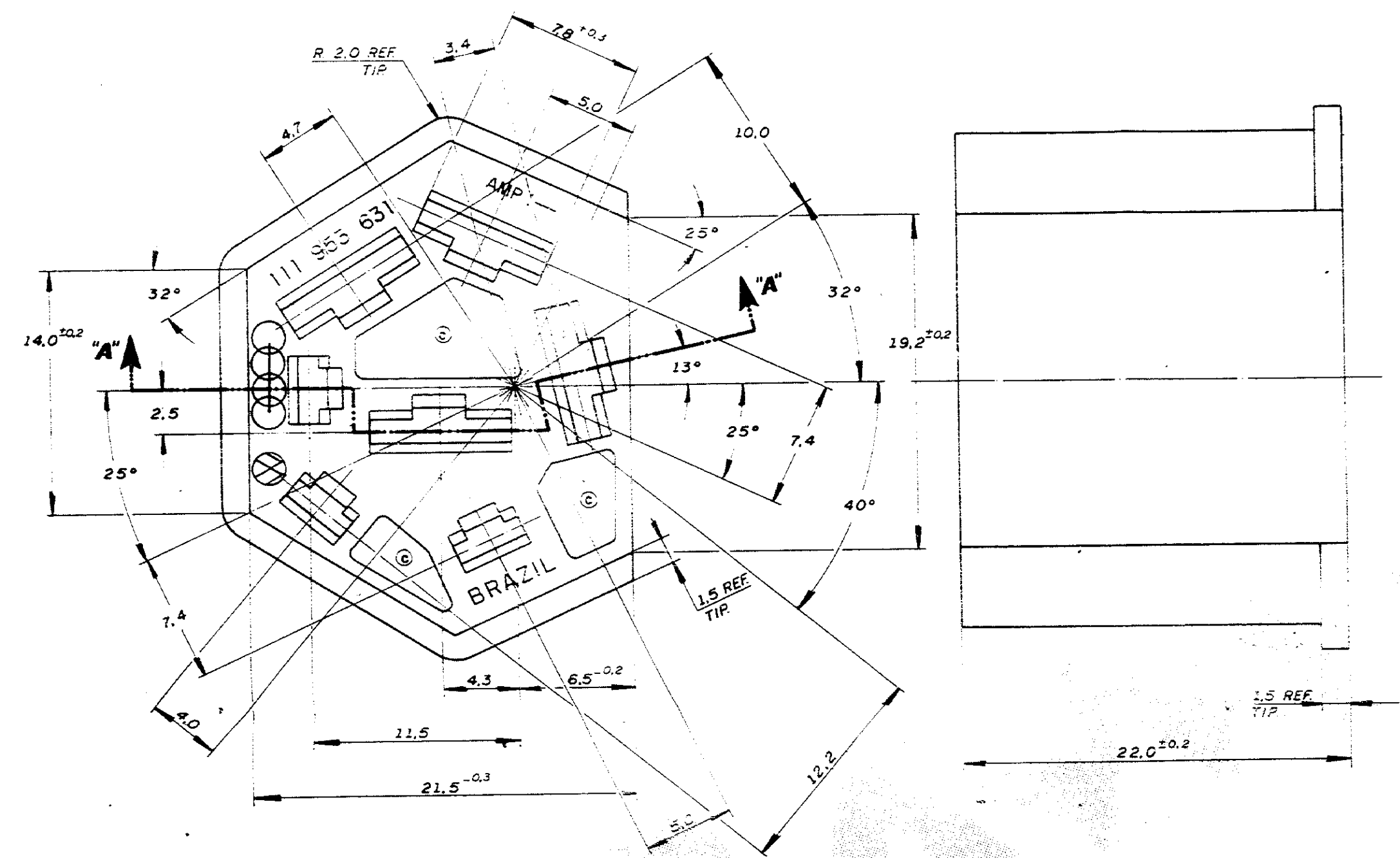
2

1

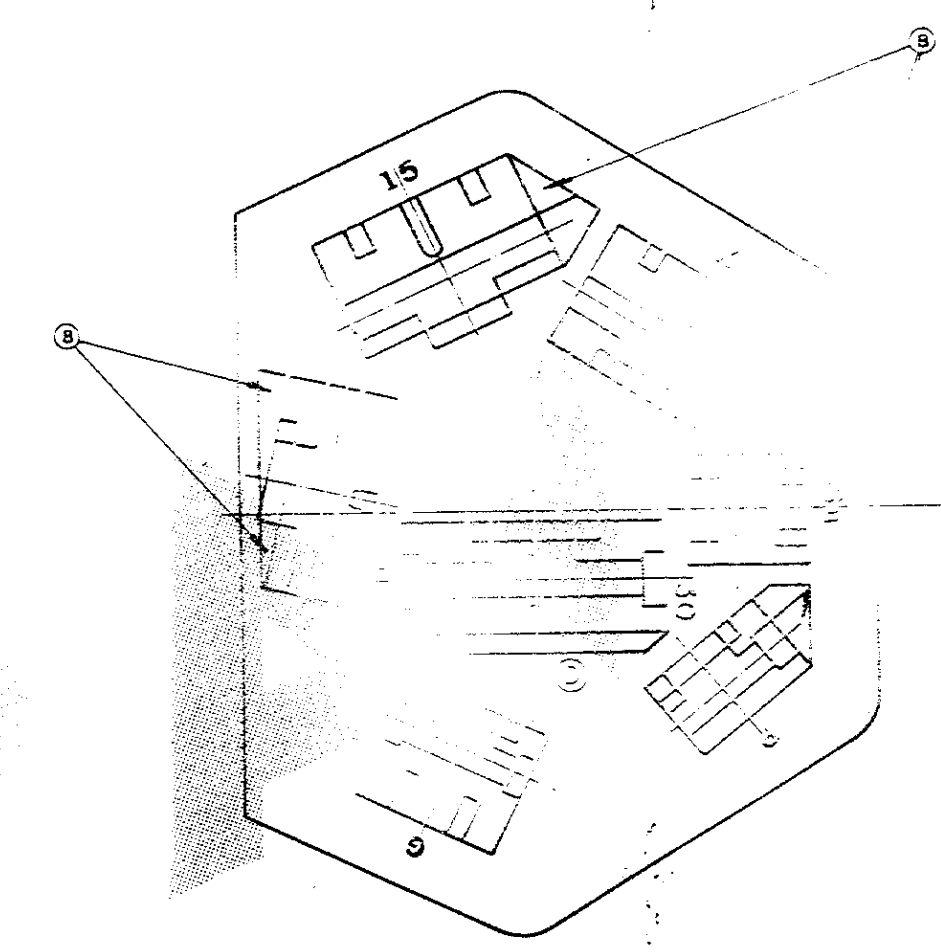
DO NOT SCALE  
DIMENSIONS IN mm.

METRIC

3rd ANGLE PROJECTION



SEÇÃO "A" - "A"



|  |                      |               |                 |
|--|----------------------|---------------|-----------------|
| 111 953 631                                  | PRETO                | POLIAMIDA 6.6 | 88.237-         |
| PNº VW                                       | F.N.S.               | MATERIAL      | PART NUMBER     |
| CUSTOMER ONLY<br>for REFERENCE ONLY          |                      |               |                 |
| REVISION RECORD                              |                      |               |                 |
| D  | REVISADO             | DATA          | DE              |
| T  | ALIVIOS E GRAVAÇÕES  | DATA          | DE              |
| C  | REVISADO POSIÇÃO DOS | DATA          | DE              |
| B  | REVISADO             | DATA          | DE              |
| A  | REVISADO             | DATA          | DE              |
| O  | EDA P 85-29073       | LOUCA         | 13-2-86         |
| REVISION RECORD                              | DR                   | CHK           | DATE APP        |
| 7 WAY COMBINED 250/110<br>FASTIN-ON REC. HS6 |                      |               | SHEET<br>1 of 1 |
| A2 DWG NO<br>C 881237                        |                      |               |                 |

# Mouser Electronics

Authorized Distributor

Click to View Pricing, Inventory, Delivery & Lifecycle Information:

[TE Connectivity:](#)

[881237-1](#)