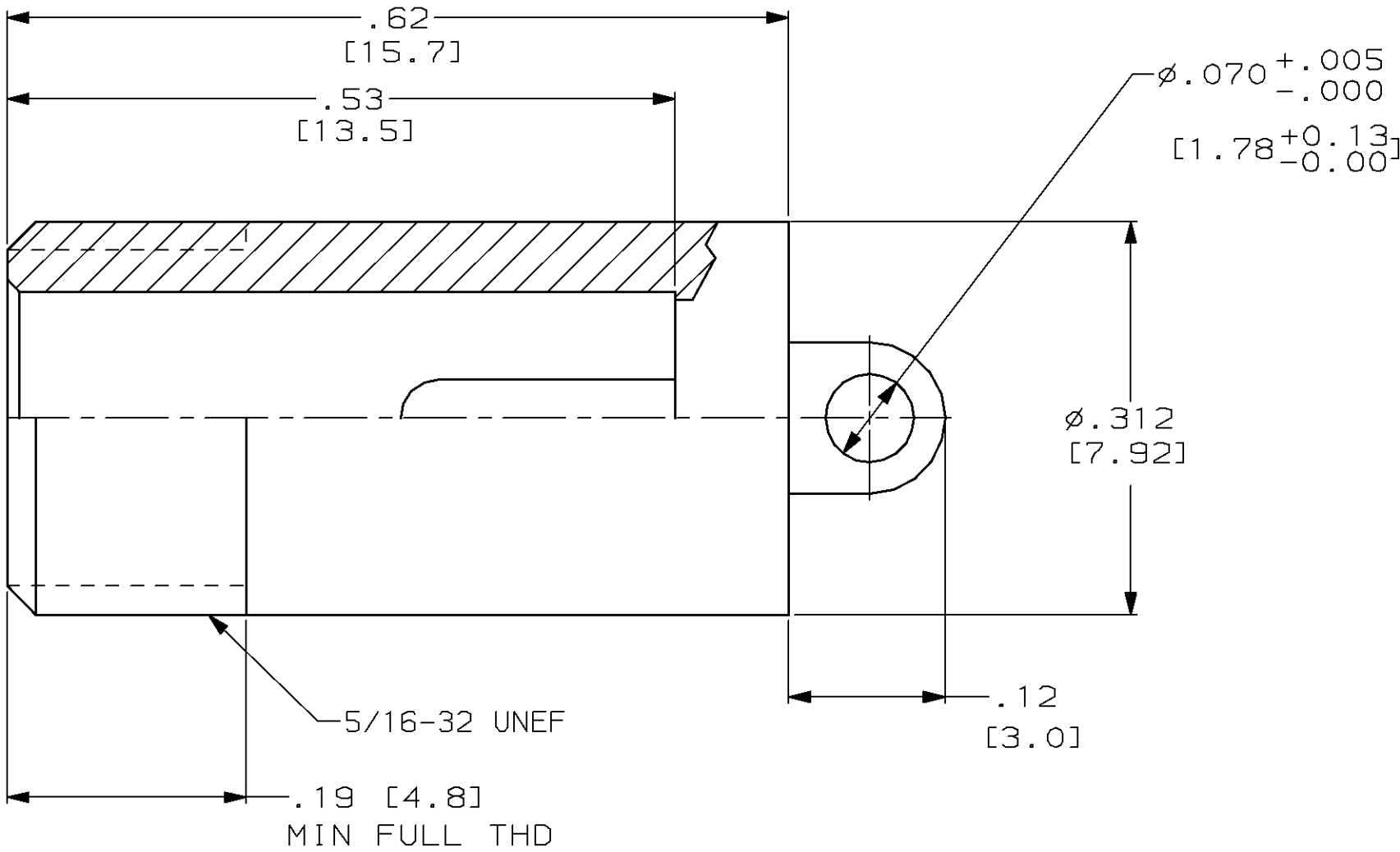
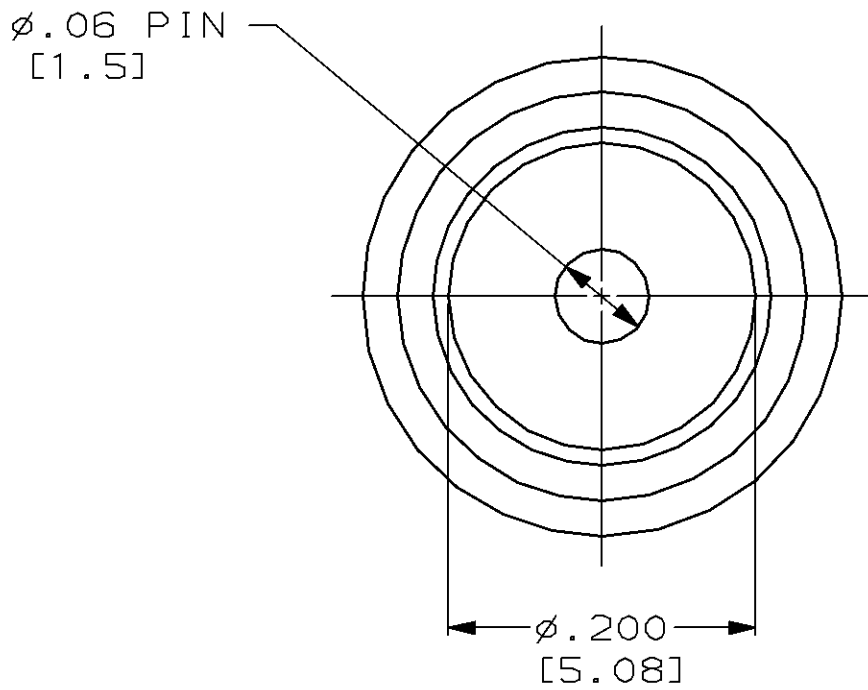


PROD	LOC	DIST	REVISIONS						
4087	DF	SO	P	F	ZONE	LTR	DESCRIPTION	DATE	APPD
						C	REV & REDRAWN; 0600-5601-96	CT	8-96
									SG



1. RECEPTACLE TO MATE WITH AMP LGH-1/2 LEAD ASSY.
2. MARKED PER MIL-STD-130.
3. 100% SCREENING INSPECTION IS REQUIRED:

A. VISUAL

B. MECHANICAL

C. INSULATION RESISTANCE: 10 GIGA OHMS (MIN) @ 300 VDC

D. DIELECTRIC WITHSTANDING VOLTAGE: 15 KVDC FOR 3 MIN.

E. SUPPLY DATA

4	.000150 MIN TIN [0.00381]	864522-1
REMARKS	TERMINAL PLATING	PART NO.

DO NOT SCALE PRINT. UNLESS SPECIFIED DIMENSIONS IN INCHES [mm] TOLERANCES ON : 2 PLC DEC ± .02 [0.5] 3 PLC DEC ± .005 [0.13] ANGLES ± -	DR 8-27-96 C.C.THOMAS	<div>AMP</div> <div>AMP Incorporated Harrisburg, PA 17105-3608</div> <div>RECEPTACLE, LGH-1/2</div>		
	CHK 9-10-96 S.GLATFELTER			
	APPD 9-10-96 S.GLATFELTER			
	RLSE 9-10-96 C.C.THOMAS			
MATERIAL  EPOXY MLDG. CMPD.	PRODUCT SPEC -			
COLOR  BLACK	APPLICATION SPEC -	SIZE C	CAGE CODE 00779	DRAWING NO C=864522
WEIGHT -		SCALE 8:1	SHEET 1 OF 1	

THIS DRAWING IS A CONTROLLED DOCUMENT FOR AMP INCORPORATED. IT IS SUBJECT TO CHANGE AND THE CONTROLLING ENGINEERING ORGANIZATION SHOULD BE CONTACTED FOR THE LATEST REVISION.

# Mouser Electronics

Authorized Distributor

Click to View Pricing, Inventory, Delivery & Lifecycle Information:

[TE Connectivity:](#)

[864522-1](#)