

4

3

2

1

THIS DRAWING IS UNPUBLISHED.

RELEASED FOR PUBLICATION

,19 .

© COPYRIGHT 19

BY AMP INCORPORATED. ALL RIGHTS RESERVED.

LOC

DIST

REVISIONS

FT

47

P

LTR

DESCRIPTION

DATE

DWN

APVD

O

RLSE -2 PER NPR 3, WAS 96-4986-1

28 JUL 96

-

-

A

REV PER EC 0320-47-96

6 SEP 96

CO

KD

20.96±0.25
[.825±.010]
TYP

1.98 [.078]
MAX DIA

14.48
[.570]

12.95±0.08
[.510±.003]
2 PLC

0.76 [.030]
2 PLC

788000-2

PART
NUMBER

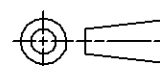
1. WIRE RANGE = 18-20 AWG.

2. INSULATION RANGE = 2.03[.080]-2.54[.100].

THIS DRAWING IS A CONTROLLED DOCUMENT FOR AMP INCORPORATED.
IT IS SUBJECT TO CHANGE AND THE CONTROLLING ENGINEERING
ORGANIZATION SHOULD BE CONTACTED FOR THE LATEST REVISION.

DIMENSIONS:

mm [INCHES]

TOLERANCES UNLESS
OTHERWISE SPECIFIED:

0 PLC ±-
1 PLC ±-
2 PLC ±0.13 [.005]
3 PLC ±-
4 PLC ±-
ANGLES ±-
FINISH

MATERIAL

BRASS

3.30 μm [.000130]
MIN TIN

DWN

W.G. LENKER

28 JUL 96

CHK

R. STONE

29 JUL 96

APVD

K. DOWHOWER

31 JUL 96

PRODUCT SPEC

108-10032

APPLICATION SPEC

114-10011

WEIGHT

-

CUSTOMER DRAWING

AMP

AMP Incorporated
Harrisburg, PA 17105-3608

NAME

SOCKET CONTACT, 20-18, AUDIO

SIZE

CAGE CODE

DRAWING NO

A3

00779

C-788000

SCALE

10:1

SHEET

1 OF 1

REV

A

Mouser Electronics

Authorized Distributor

Click to View Pricing, Inventory, Delivery & Lifecycle Information:

[TE Connectivity:](#)

[788000-2](#)