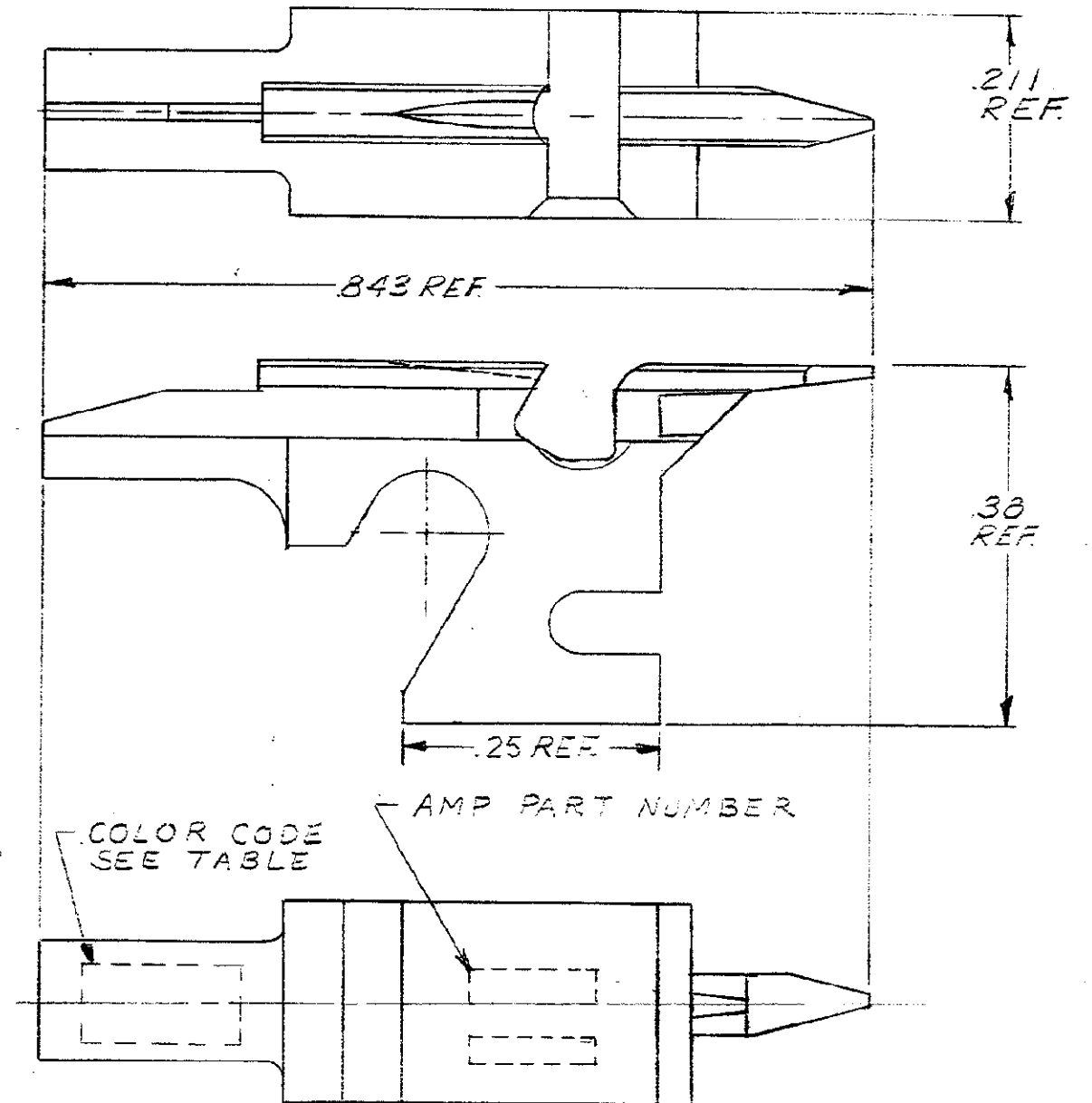


PART NUMBER	FIRST USED	AWG	INS RANGE		COLOR CODE
			MAX.	MIN.	
69411	69525-1	24	.065	.046	RED
69411-4	69525-1	22	.065	.046	ORANGE
69411-7	69525-1	22	.065	.046	ORANGE
1-69411-0	69525-1	24	.065	.046	RED
1-69411-1	69525-1	26	.065	.046	BROWN
1-69411-2	69525-1	24	.065	.046	RED
1-69411-3	69525-1	24	.065	.046	RED
1-69411-4	69525-1	22	.065	.046	ORANGE
1-69411-5	69525-1	24	.065	.046	RED
1-69411-6	69525-1	22	.065	.046	ORANGE
1-69411-8	69525-1	24	.065	.046	RED
1-69411-9	69525-1	26	.065	.046	BROWN



PRINT DIST 80

DIMENSIONS IN INCHES. DO NOT SCALE PRINT.

REVISION	REVISION RECORD	DR	CHK	DATE
C	REVISED	B.S.		1-27-75
B	REVISED	FN		12-40-71
A	REVISED	PL		5-9-68

REQUIRED PER ASSEMBLY		DWG SIZE		UNPUBLISHED COPY SHOULD BE REPRODUCED AND NOTIFIED		REMARKS		ITEM NO	
69411 NUMBER		DR		B. Shenfeld 4-5-68		MATERIAL AND COATING		STEEL	
		CHK		E. J. Link 4-9-68		ELECTROLESS NICKEL		CLASS	
		DE				WIRE - RANGE - INSULATION		TYPE	
						SEE TABLE SEE TABLE		TERMI-POINT	
		TOLERANCE EXCEPT AS NOTED		SCALE		LOC		NO	
		± .015 ± 1° 0'		H		M		B	
		NAME		MANDREL		REV		C	

Mouser Electronics

Authorized Distributor

Click to View Pricing, Inventory, Delivery & Lifecycle Information:

[TE Connectivity:](#)

[1-69411-9](#)