

PRINTED CIRCUIT LAYOUT  
COMPONENT SIDE

| CONNECTOR | CATALOG<br>MODULE # | QTY | SIZE<br>NO. | CONTACT<br>QTY | MATING PIN                   | MAX. CURRENT<br>(PER CONTACT) | CONTACT<br>SPACING | VOLTAGE<br>RATING |
|-----------|---------------------|-----|-------------|----------------|------------------------------|-------------------------------|--------------------|-------------------|
| SOCKET    | FPI04               | 2   | 8           | 2              | 1.25 X 7.00<br>[.049 X .276] | 35 amps                       | 7.50 [.2953]       | 250               |

THIS DRAWING IS A CONTROLLED DOCUMENT FOR TYCO ELECTRONICS CORPORATION  
IT IS SUBJECT TO CHANGE AND THE CONTROLLING ENGINEERING ORGANIZATION  
SHOULD BE CONTACTED FOR THE LATEST REVISION.

DIMENSIONS:  
mm[INCHES]

MATERIAL

-

TOLERANCES UNLESS  
OTHERWISE SPECIFIED:

0 PLC ±.5  
1 PLC ±.5  
2 PLC ±.25  
3 PLC ±0.001  
4 PLC ±0.0001  
ANGLES ±.5  
FINISH

-

DWN  
R.GRZYBOWSKI  
CHK  
S.FLICKINGER  
APVD  
S.FLICKINGER

04OCT06  
04OCT06  
04OCT06

PRODUCT SPEC  
-  
APPLICATION SPEC  
-  
WEIGHT  
-

CUSTOMER DRAWING

tyco  
Electronics

Tyco Electronics  
Harrisburg, PA 17105-3608

NAME  
RIGHT ANGLE SOCKET CONN,  
SOLDER TAILS

SIZE  
A200779

CAGE CODE  
C-6766003

DRAWING NO.  
-

RESTRICTED TO  
-

SCALE  
4:1

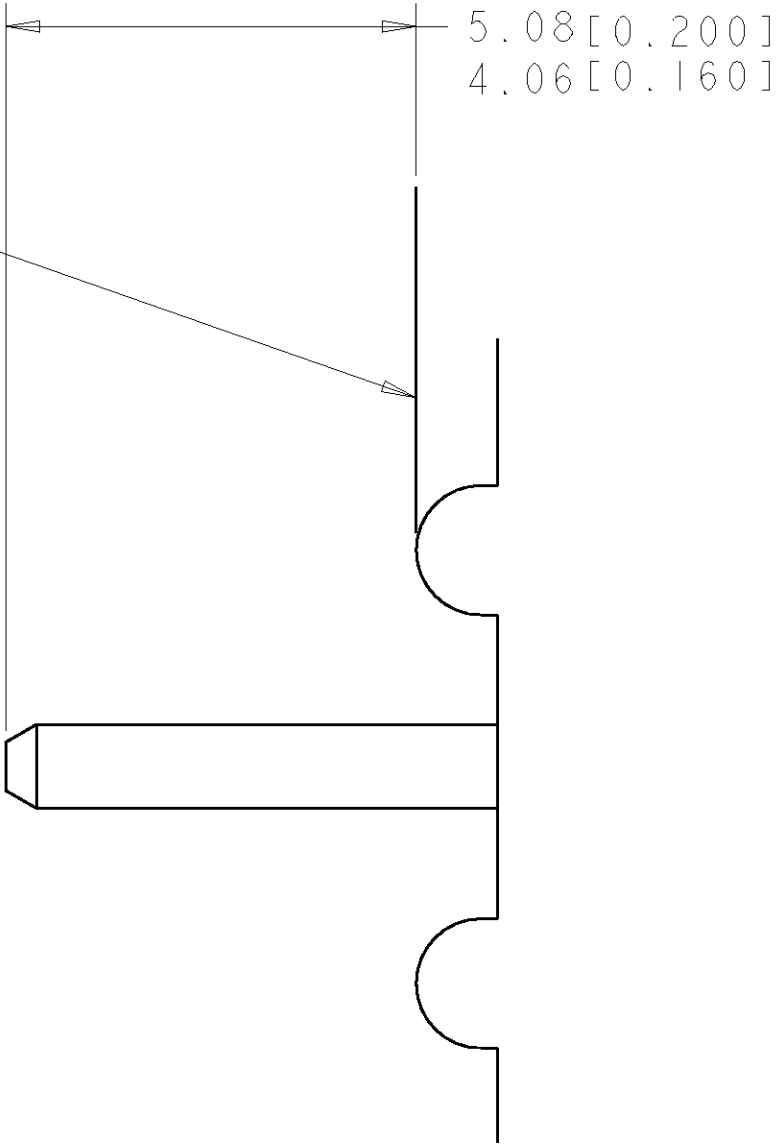
SHEET  
2 OF 3

REV  
A

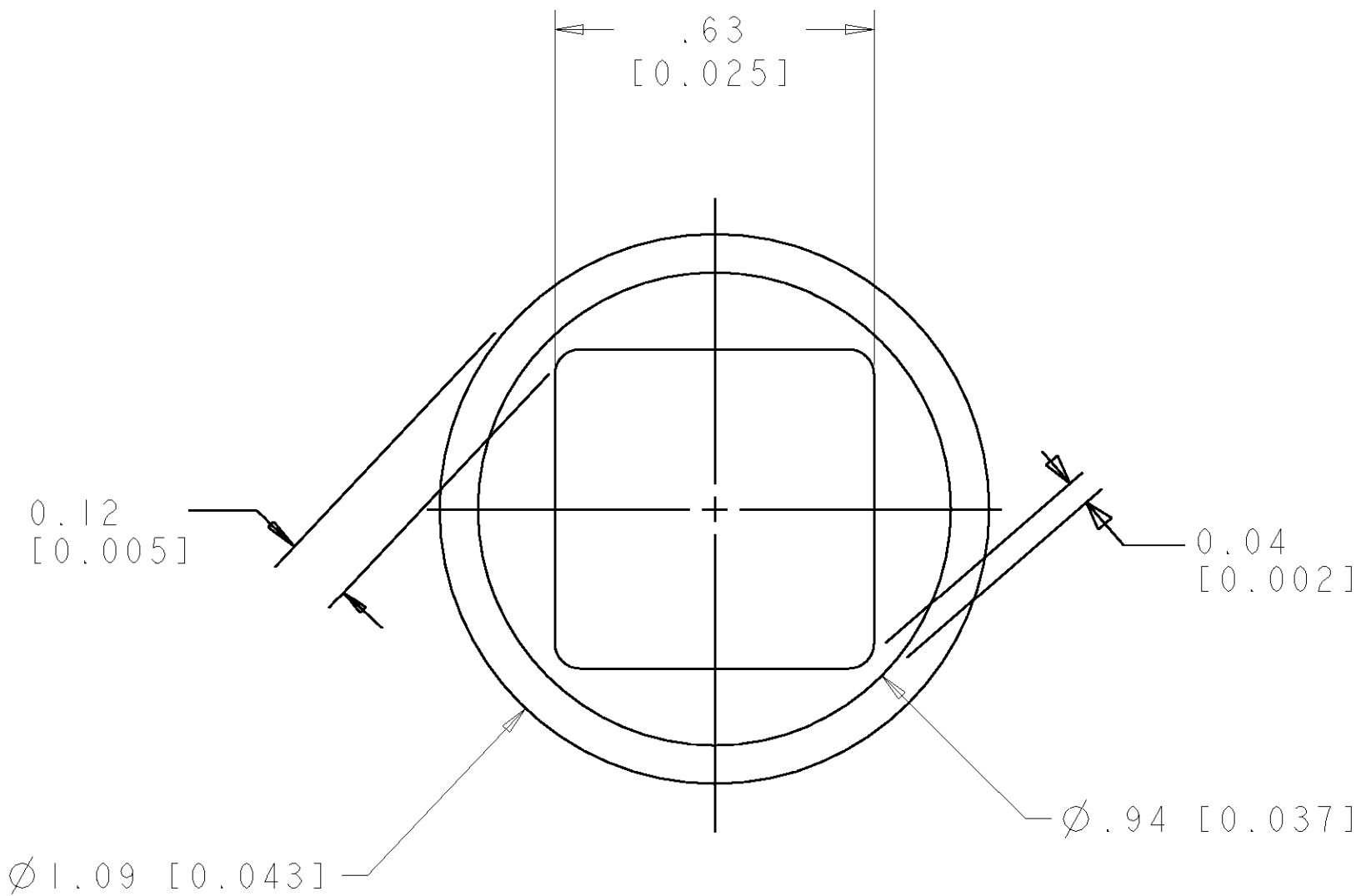
AMP 1471-9 REV 31MAR2000

| LOC | DIST | REVISIONS |     |             |      |     |      |
|-----|------|-----------|-----|-------------|------|-----|------|
| GP  | 00   | P         | LTR | DESCRIPTION | DATE | DWN | APVD |
|     |      |           | -   | SEE SHEET 1 | -    | -   | -    |
|     |      |           |     |             |      |     |      |
|     |      |           |     |             |      |     |      |
|     |      |           |     |             |      |     |      |

P.C. BOARD  
SURFACE REF



6. SOLDER TAIL DETAIL  
SCALE 10 : 1



7. SOLDER TERMINATION AREA  
SCALE 40:1  
RECOMMENDED PRINTED CIRCUIT SOLDER HOLE  
FINISHED HOLE: Ø1.02 [.040] ±.008 [.0003]  
DRILLED HOLE: Ø1.15 [.0453] ±.013 [.0005]  
COPPER PLATE: .025 [.0010] MIN (PER SURFACE)  
TIN PLATE: .008 [.0003] MIN. (PER SURFACE)

|  |  |                                  |  |                 |
|--|--|----------------------------------|--|-----------------|
| THIS DRAWING IS A CONTROLLED DOCUMENT FOR TYCO ELECTRONICS CORPORATION<br>IT IS SUBJECT TO CHANGE AND THE CONTROLLING ENGINEERING ORGANIZATION<br>SHOULD BE CONTACTED FOR THE LATEST REVISION. |  | DWN<br>R. GRZYBOWSKI<br>04OCT06  | tyco<br>Electronics<br>Tyco Electronics<br>Harrisburg, PA 17105-3608 |                 |
| DIMENSIONS:<br>mm[INCHES]  |  | CHK<br>S. FLICKINGER<br>04OCT06  | NAME<br>RIGHT ANGLE SOCKET CONN,<br>SOLDER TAILS                     |                 |
| TOLERANCES UNLESS<br>OTHERWISE SPECIFIED:<br>0 PLC ±.5<br>1 PLC ±.5<br>2 PLC ±.25<br>3 PLC ±0.001<br>4 PLC ±0.0001<br>ANGLES ±.5<br>FINISH   |  | APVD<br>S. FLICKINGER<br>04OCT06 | SIZE<br>A200779  |                 |
| MATERIAL<br>-  |  | PRODUCT SPEC<br>-                | CAGE CODE<br>C-6766003   | DRAWING NO<br>- |
|  |  | APPLICATION SPEC<br>-            | RESTRICTED TO<br>-   |                 |
|  |  | WEIGHT<br>-                      | SCALE<br>4.1   | SHEET<br>3 OF 3 |
|  |  | CUSTOMER DRAWING                 | REV<br>A   |                 |

# Mouser Electronics

Authorized Distributor

Click to View Pricing, Inventory, Delivery & Lifecycle Information:

[TE Connectivity:](#)

[6766003-1](#)