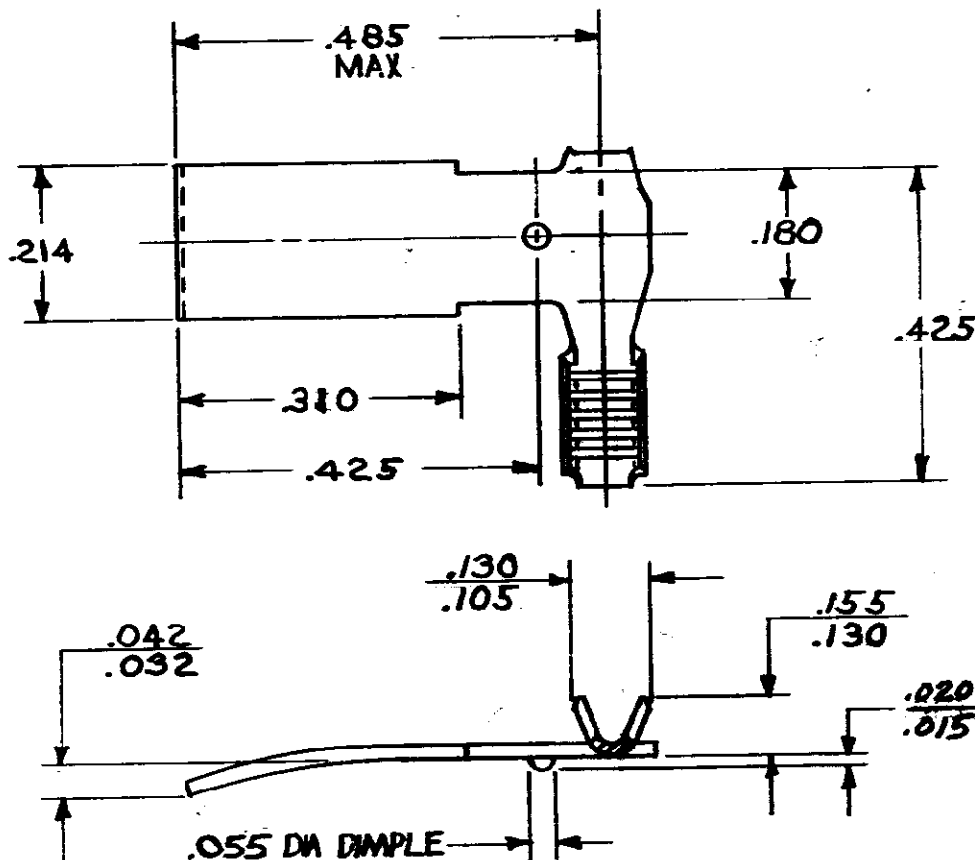


© COPYRIGHT 1974 BY AMP  
INCORPORATED, HARRISBURG, PA.  
ALL INTERNATIONAL RIGHTS  
RESERVED, AMP INCORPORATED  
PRODUCTS COVERED BY U.S. AND  
FOREIGN PATENTS AND  
PENDING.

## REVISIONS

LTR	DESCRIPTION	DATE	APPROVED	P F
A	REVISED PER A-2514	9-6-73		
B	RELEASED FOR PROD	2-21-74		
C	REVISED A-2869	12-4-74	ELG/BN	
D	ADDED-2, WRS 87-1045-3	5-8-87	MSP/GY	
E	REV PER AF-6779	6/1/90	DKS/	



CONTINUOUS STRIP ON REELS

RIGHT HAND	#22-#77	62214-2
LEFT HAND	#22-#77	62214-1
WHEELING	WIRE RANGE	PART NO

UNLESS OTHERWISE  
SPECIFIED DIMENSIONS  
ARE IN INCHES.  
TOLERANCES ON:  
DECIMALS  $\pm .015$   
ANGLES  $\pm 1.0^\circ$

MATERIAL

.020 PHOS BRS

FINISH

NONE

CONTRACT NO

DR 8-8-73  
S. SCHAFFHAUSER  
CHK 8-21-73  
C. FERNALD

APPD

APPD

DSGN APPD

OTHER APPD

e.c. hays



AMP INCORPORATED  
Harrisburg, Pa.

NAME

AMPLIVAR BRUSH CONTACT

SIZE

A

CODE IDENT NO

00779

NUMBER

62214

SCALE

SHEET

1 of 1

# Mouser Electronics

Authorized Distributor

Click to View Pricing, Inventory, Delivery & Lifecycle Information:

[TE Connectivity:](#)

[62214-2](#)