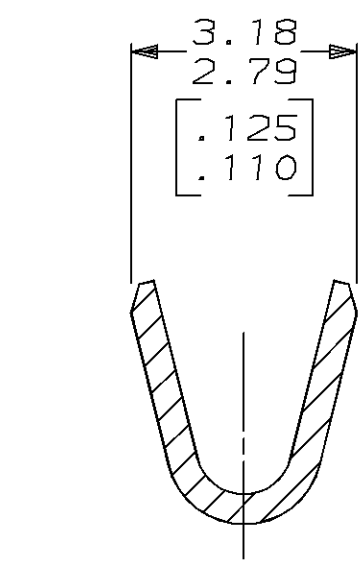
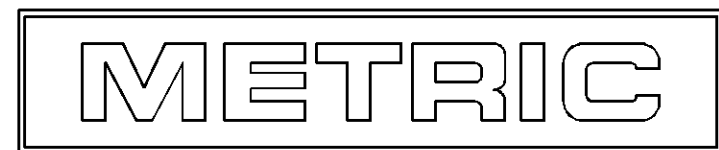
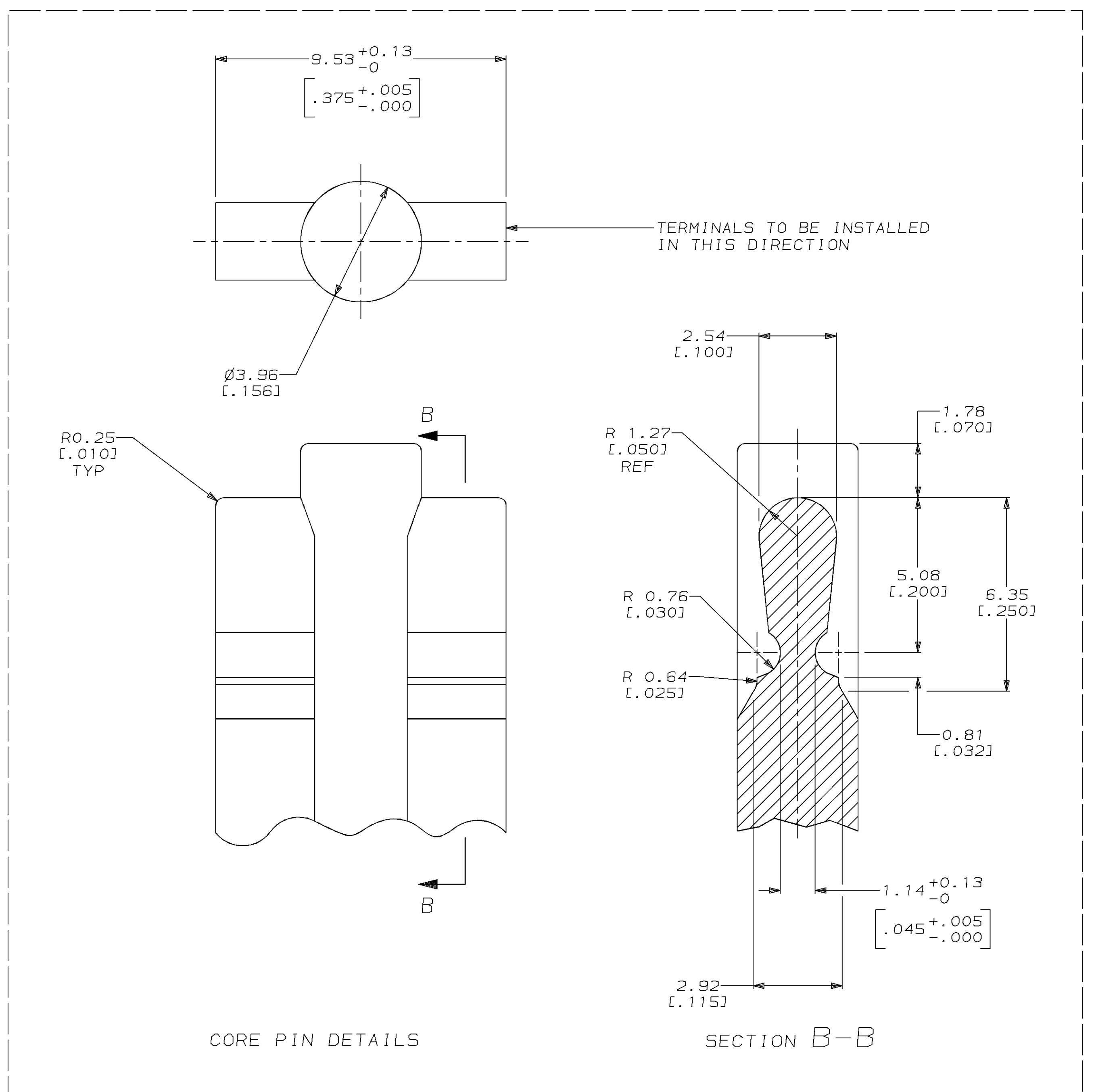
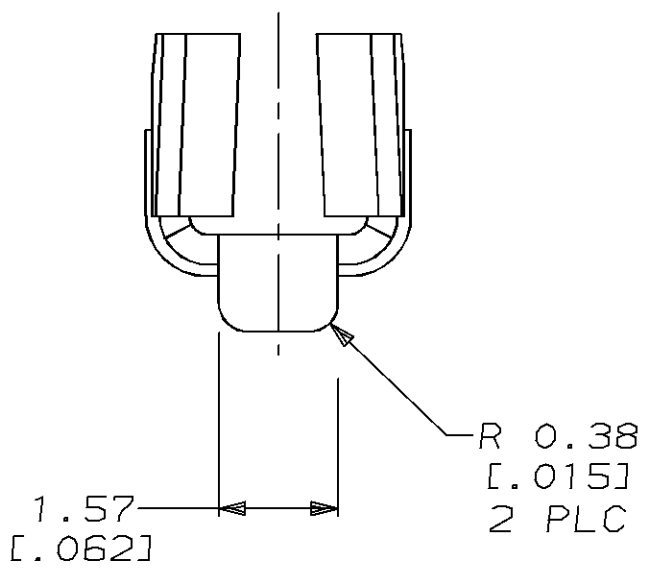
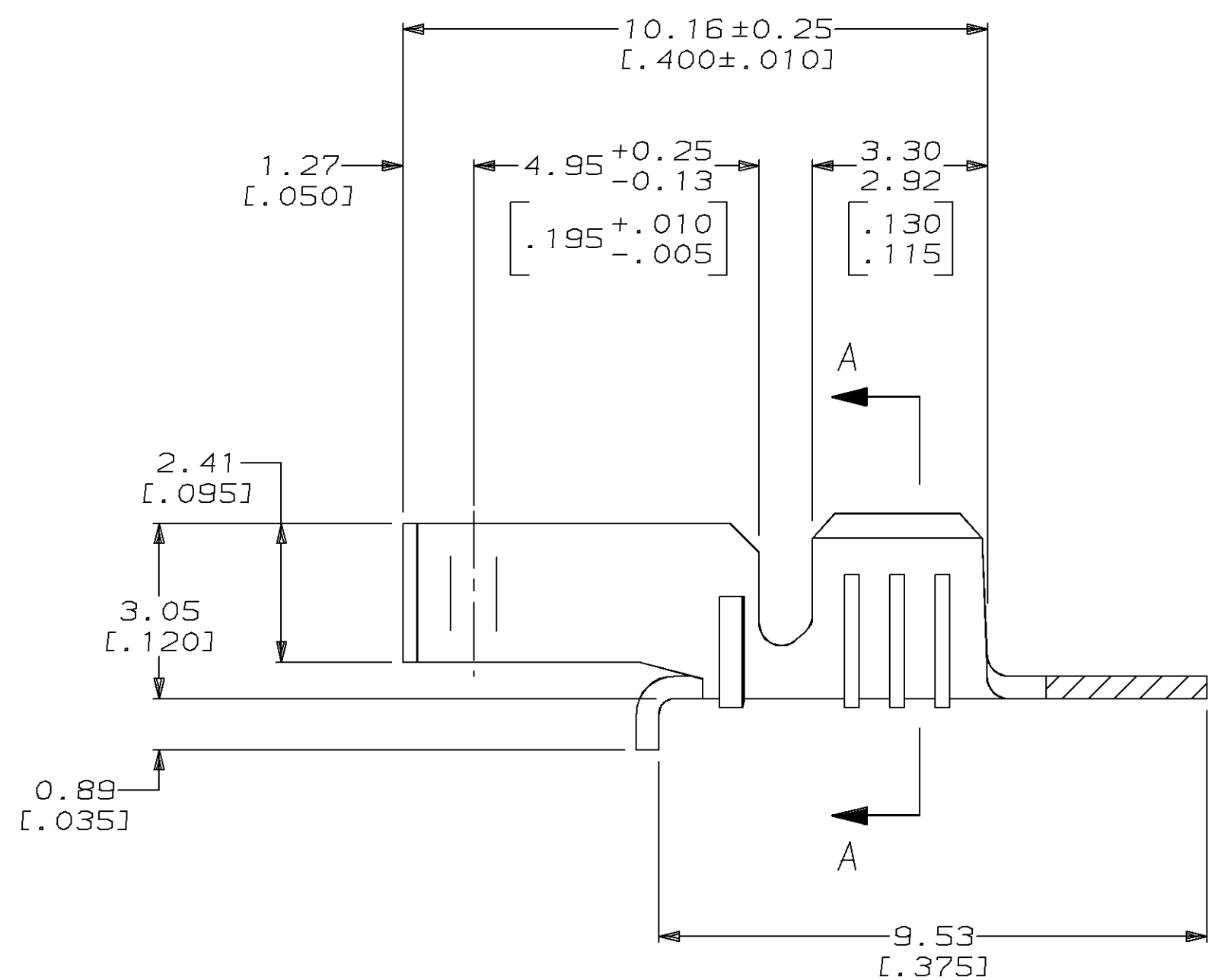
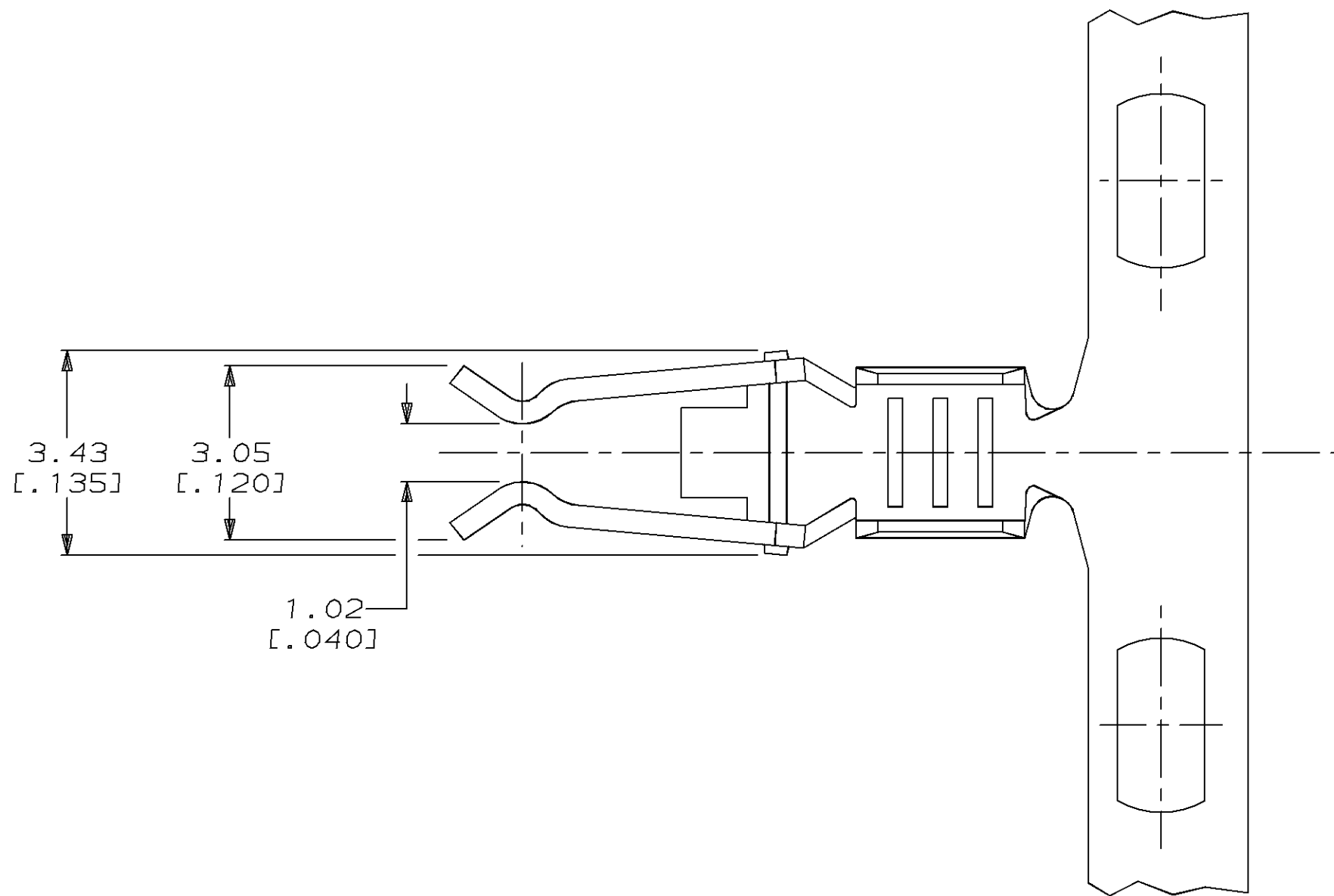


LOC		DIST		REVISIONS				DATE		APPD	
AF		50		P	F	ZONE	LTR				
							J	REV PER 0710-0427-95		27/SEP/95	PF 05

1. WIRE RANGE: 0.5 - 1.4 mm² [20 - 16 AWG].
2. DIMENSION IN BRACKETS ARE IN INCHES.



SECTION A-A



THIS DRAWING IS A CONTROLLED DOCUMENT FOR AMP INCORPORATED. IT IS SUBJECT TO CHANGE AND THE CONTROLLING ENGINEERING ORGANIZATION SHOULD BE CONTACTED FOR THE LATEST REVISION.

DO NOT SCALE PRINT. UNLESS SPECIFIED DIMENSIONS IN mm [INCHES] TOLERANCES: ON: 2 PLC DEC ± 0.13 [.005] 3 PLC DEC ± - ANGLES ± -		DR 2-18-94 T. BECK	61812-1			
MATERIAL 0.41 [.016] BRASS		CHK 2-18-94 R. SWING	PART NO			
FINISH PRE-TIN		APPD 4-03-95 R. GRAY	NAME			
WEIGHT -		APPD 4-03-95 R. GRAY	LAMP CLIP			
		PRODUCT SPEC -				
		APPLICATION SPEC -				
		WEIGHT -				
			SIZE D	CAGE CODE 00779	DRAWING NO C-61812	
			SCALE 10:1		SHEET 1 OF 1	

CUSTOMER DRAWING

Mouser Electronics

Authorized Distributor

Click to View Pricing, Inventory, Delivery & Lifecycle Information:

[TE Connectivity:](#)

[61812-1](#)