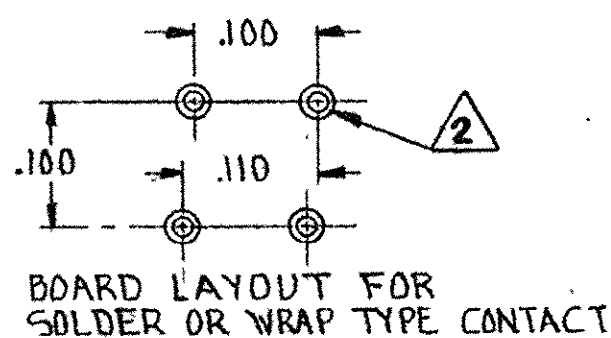
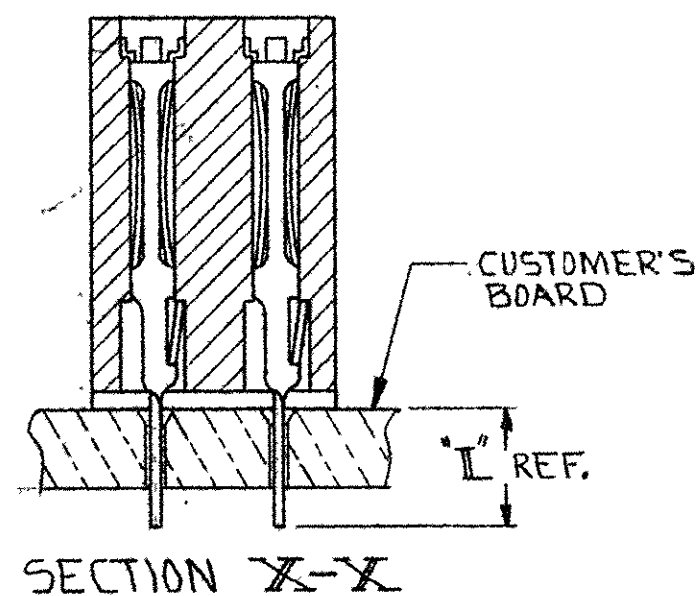
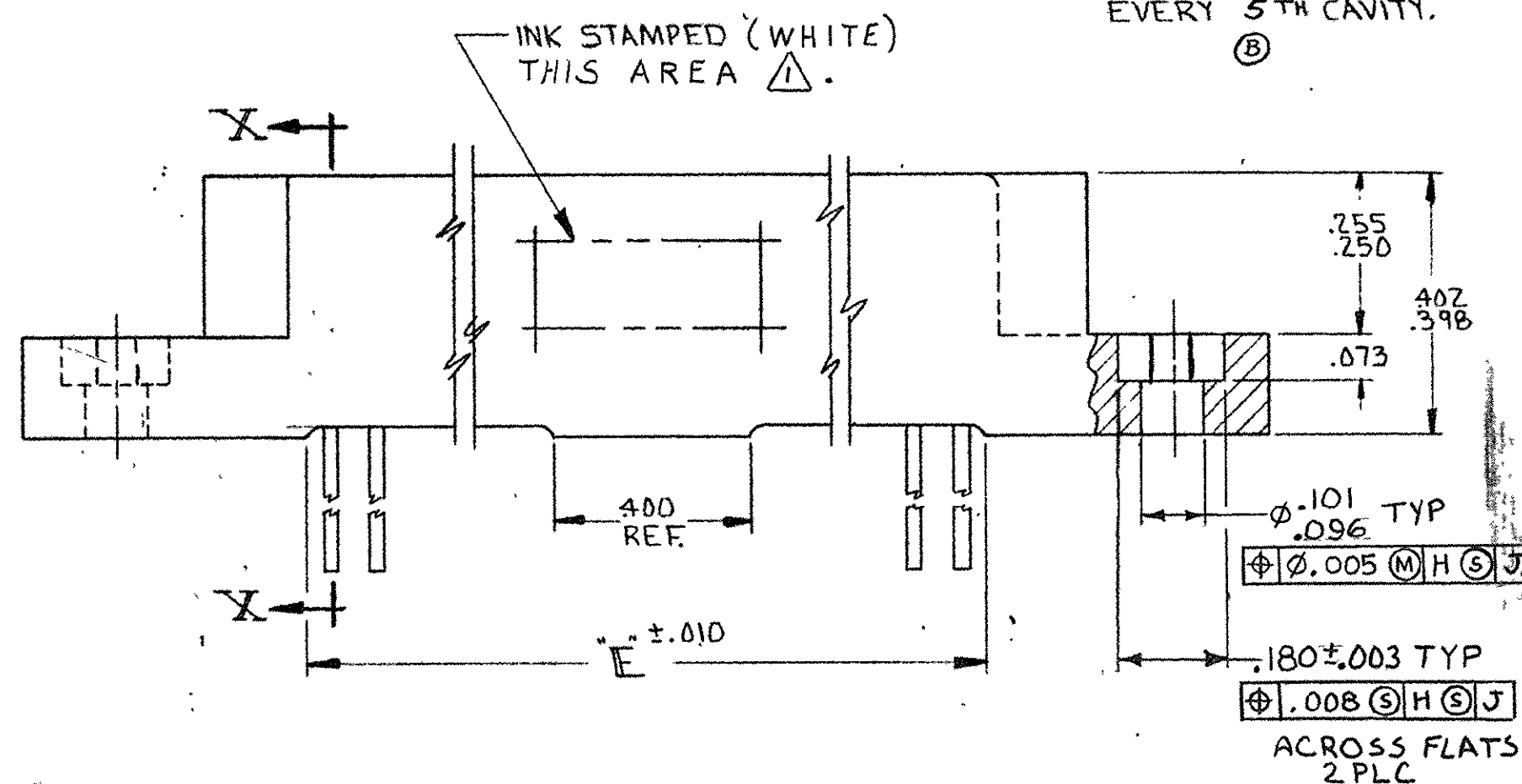
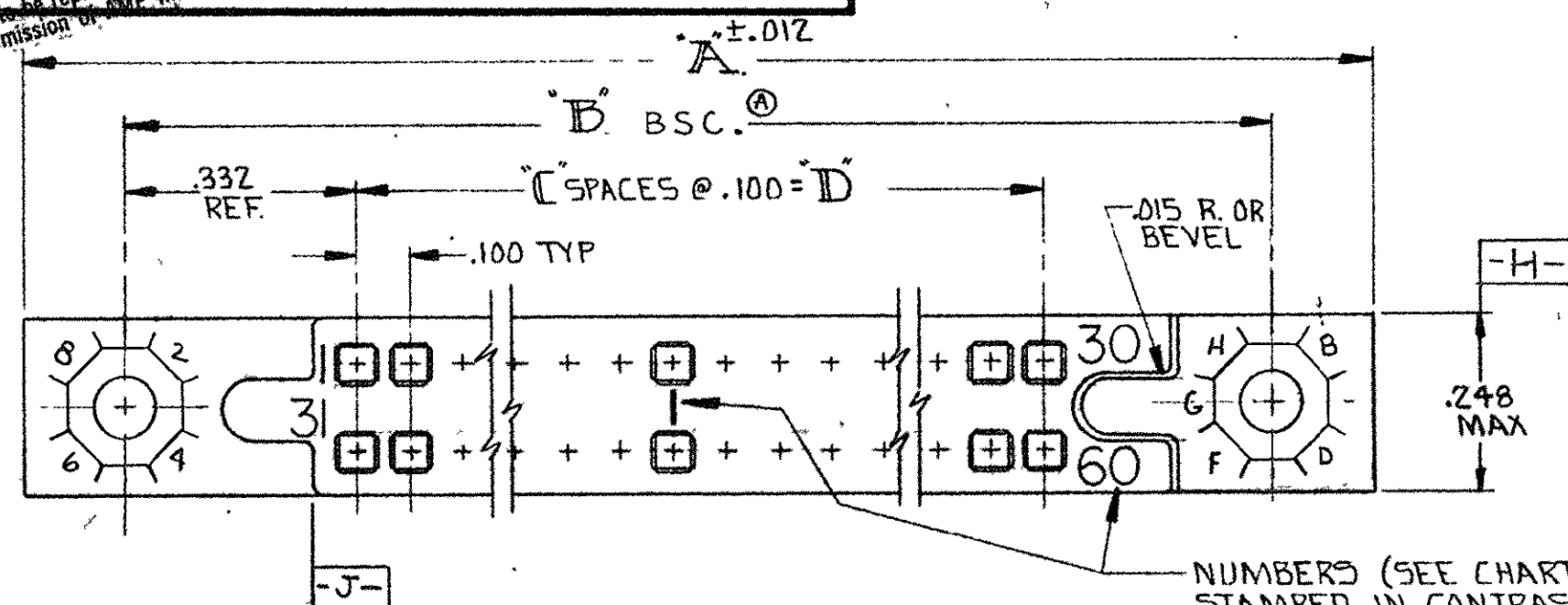


© 1977 BY AMP INCORPORATED. ALL RIGHTS RESERVED. AMP PRODUCTS COVERED BY PATENTS AND/OR PATENTS PENDING.

REVISIONS				
ZONE	LTR	DESCRIPTION	DATE	APPROVED
	O	RELEASED, WAS 5087-571 CUST.	D.R. 8/30/71	D.H.
	A	REVISED 3465	M.S. 4-17-72	D.H.
	B	REVISED 3868	M.S. 7-23-73	M.Z.
	B1	REVISED NOTE 1 4538	M.S. 9-10-75	DR
	B2	REVISED NOTE 1 4811	M.S. 6-11-76	DR
	C	REVISED FINISH 7227	M.S. 2-26-81	DR
	D	REVISED FINISH 7779	D.R. 1-82	AMP
	E	REV PER DF4435	DR 4-91	D.P.
	F	REV PER 0600-4173-95	TA 1-97	GM
	G	REV PER 0600-5859-96	II 4-98	DL
	H	REV PER ECO-05-013297	11-05	PY



1. MOLD OR MARK WITH "AMP" AND AMP PART NO. IN PARENTHESES, ALSO MARK WITH DATE CODE, CUSTOMER PART NO. AND CODE IDENT. 13973.
2. .025 MIN. HOLE DIA. IN MOTHER BOARD AND A .031 X 30° CHAMFER RECOMMENDED ON CONNECTOR SIDE OF BOARD.
3. ACCEPTANCE INSPECTION PER PARA. 4.3 OF LITTON DRW 861700 SEE TABLE 2.
4. FINISH: .000030 GOLD OVER NICKEL ENTIRE CONTACT
5. CONTACT MAT'L: BERYLLIUM COPPER OR COPPER NICKEL-SILICONE

ACCEPTANCE INSPECTION	
REQUIREMENT	REQD PARA
VISUAL AND MECHANICAL	3.4
PART MARKING	3.8
CONTACT IDENTIFICATION	3.8.1
WORKMANSHIP	3.9
CONNECTOR MATING AND UNMATING FORCE	3.6.5.

TABLE 2

LITTON PART NO.	AMP PART NO.	NUMBER OF POSITIONS	CAVITY IDENT. STAMPING	A	B	C	D	E	L
861700-4	583805-2	110	56 55 110	6.355	6.065	54	5.400	5.475	.325
861700-2	583805-1	30	16 15 30	2.355	2.065	14	1.400	1.475	.325

UNLESS OTHERWISE SPECIFIED, DIMENSIONS ARE IN INCHES TOLERANCES ON : DECIMALS ±.005 ANGLES ± #		CONTRACT NO. DR <i>Bunkle 8-30-71</i>		AMP INCORPORATED HARRISBURG, PENNSYLVANIA	
MATERIAL HOUSING : DIALYL PHTHALATE, COLOR - BLUE		CHK <i>J. Veide 8/31/71</i>		NAME	
CONTACT : BERYLLIUM COPPER, 4		APPD <i>J. P. P. 8/31/71</i>		RECEPTACLE ASSEMBLY, BOX CONTACT, .100 GRID	
FINISH : 4		REL <i>R. Shuman 8-31-71</i>		SIZE CODE IDENT NO. NUMBER	
		DSGN APPD		C 00779 583805	
		OTHER APPD		SCALE SHEET	

CUSTOMER DRAWING

583805

B

A

FO

FO

FO

Mouser Electronics

Authorized Distributor

Click to View Pricing, Inventory, Delivery & Lifecycle Information:

[TE Connectivity:](#)

[583805-2](#)