

4

3

2

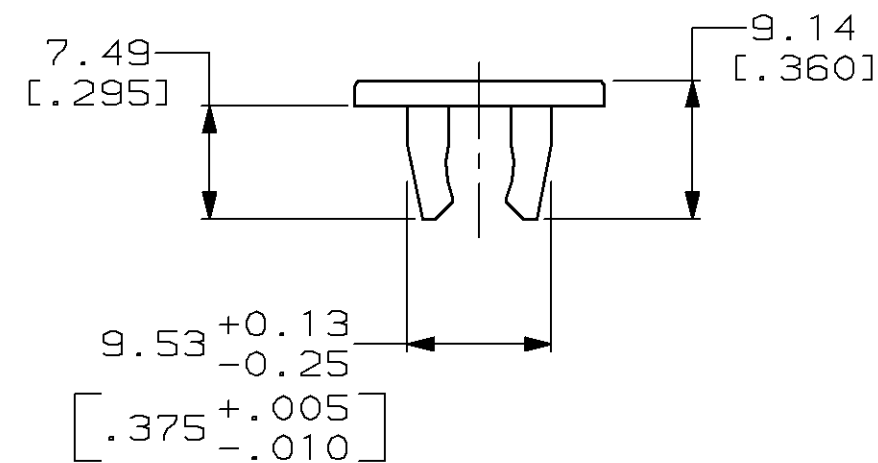
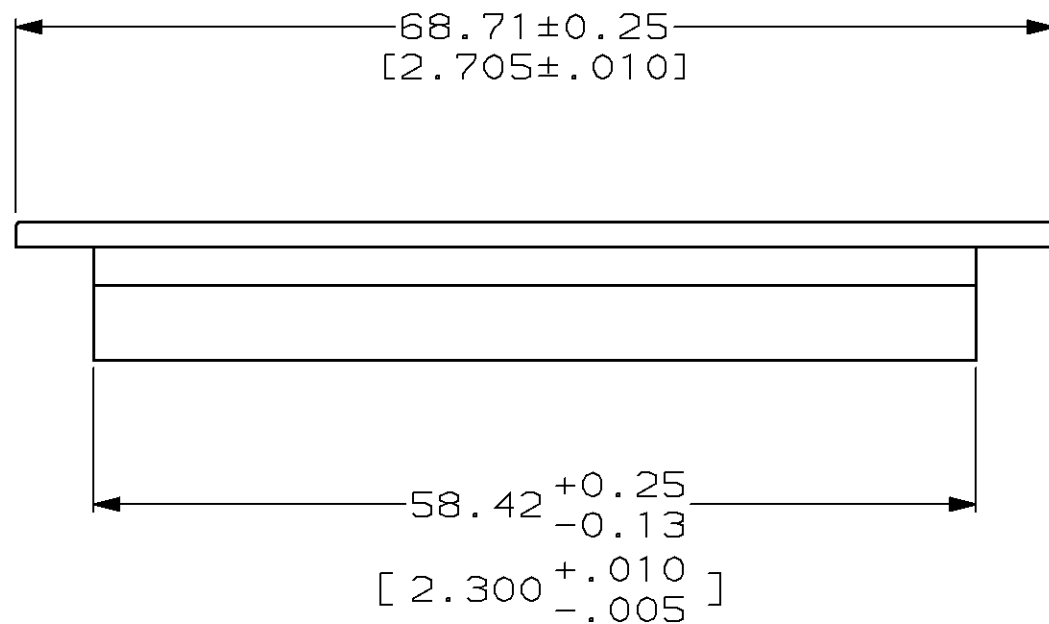
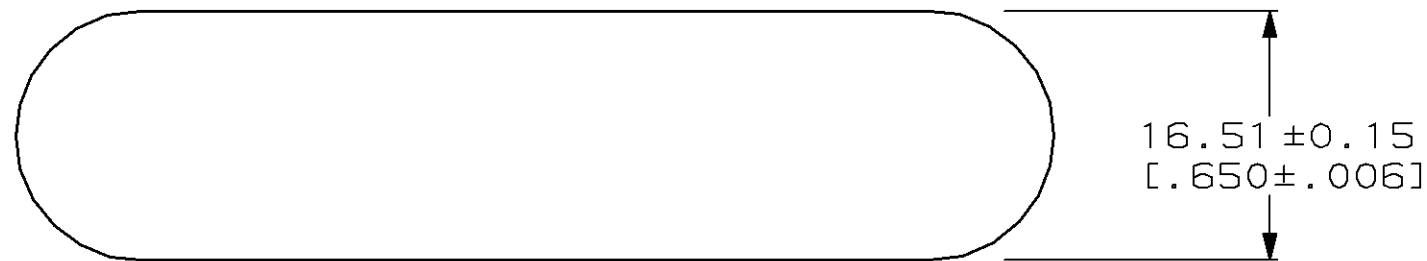
1

LOC	DIST	REVISIONS					
		P	LTR	DESCRIPTION	DATE	DWN	APVD
AA	20		A	REV; EC 0502-0123-96	19SEPT96	DS	MH

- 1

MATERIAL: POLYETHYLENE MOLDING COMPOUND, BLUE.
2.

THIS DRAWING RESTRICTED TO AT&T CO.



569334-1

PART NO.

THIS DRAWING IS A CONTROLLED DOCUMENT FOR AMP INCORPORATED. IT IS SUBJECT TO CHANGE AND THE CONTROLLING ENGINEERING ORGANIZATION SHOULD BE CONTACTED FOR THE LATEST REVISION.		DWN T. SPRINKLE 4-17-95	<b>AMP</b> AMP Incorporated Harrisburg, PA 17105-3608	
		CHK D. HUSSEY 5-9-95		
		APVD M. HUGHES 9-12-95		
		PRODUCT SPEC		
DIMENSIONS: mm [INCHES]	TOLERANCES UNLESS OTHERWISE SPECIFIED:	APPLICATION SPEC	NAME COVER, DUST, PLUG, 50 POSITION, CHAMP	
	0 PLC ±- 1 PLC ±- 2 PLC ±0.13 [.005] 3 PLC ±- 4 PLC ±- ANGLES ±- FINISH -	WEIGHT -		
MATERIAL		RESTRICTED CUSTOMER	SIZE A3	CAGE CODE 00779
			DRAWING NO C-569334	SCALE 2:1
			SHEET 1 OF 1	REV A

# Mouser Electronics

Authorized Distributor

Click to View Pricing, Inventory, Delivery & Lifecycle Information:

[TE Connectivity:](#)

[569334-1](#)