

4

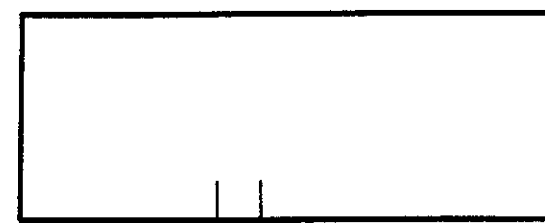
3

2

1

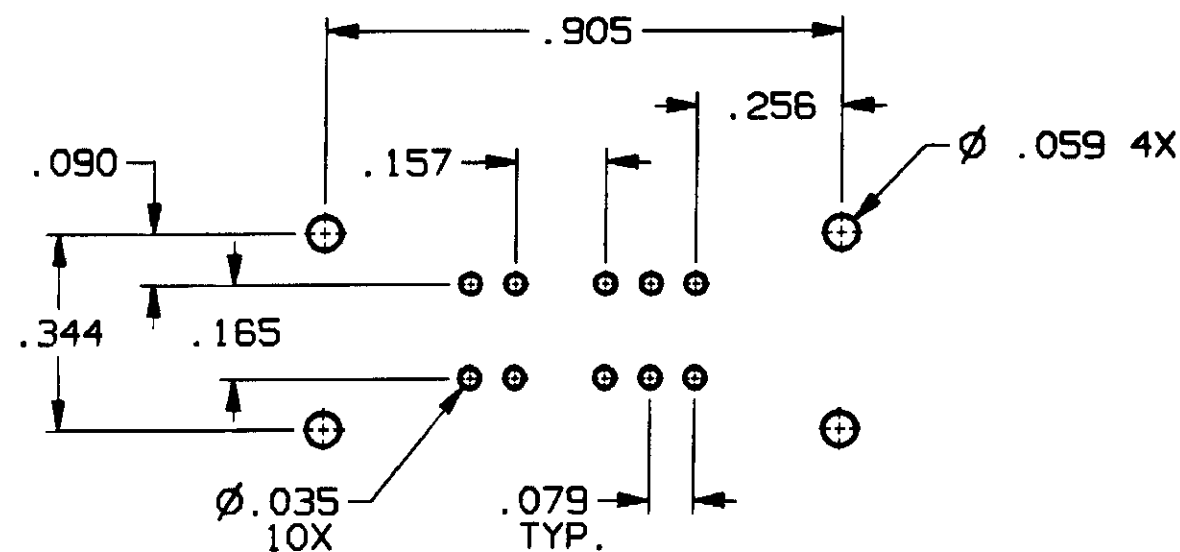
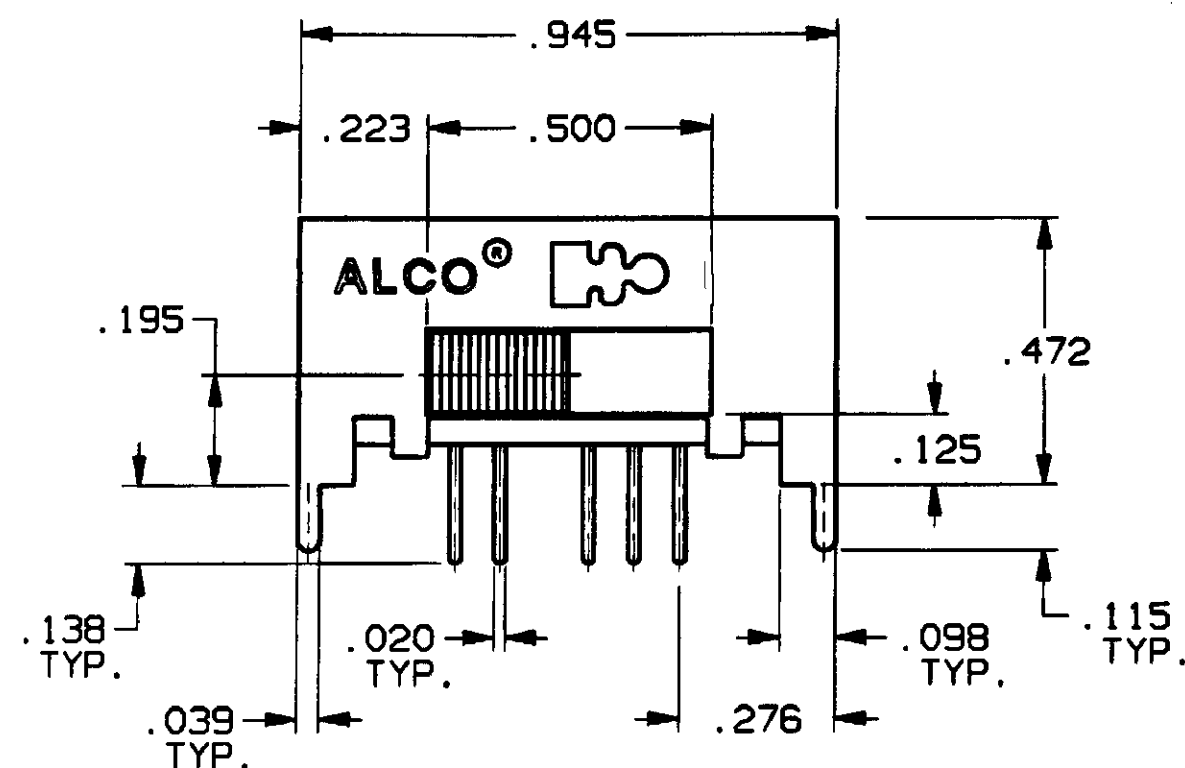
CONVERSION CHART

INCH	MM
.002	0.05
.010	0.25
.016	0.40
.020	0.50
.024	0.60
.035	0.88
.039	0.99
.059	1.49
.079	2.00
.090	2.28
.098	2.48
.110	2.79
.115	2.92
.125	3.17
.138	3.50
.140	3.98
.157	3.98
.165	4.19
.195	4.95
.250	6.35
.256	6.50
.276	7.01
.344	8.73
.355	9.01
.368	9.34
.400	10.16
.472	11.98
.500	12.70
.905	22.98
.945	24.03

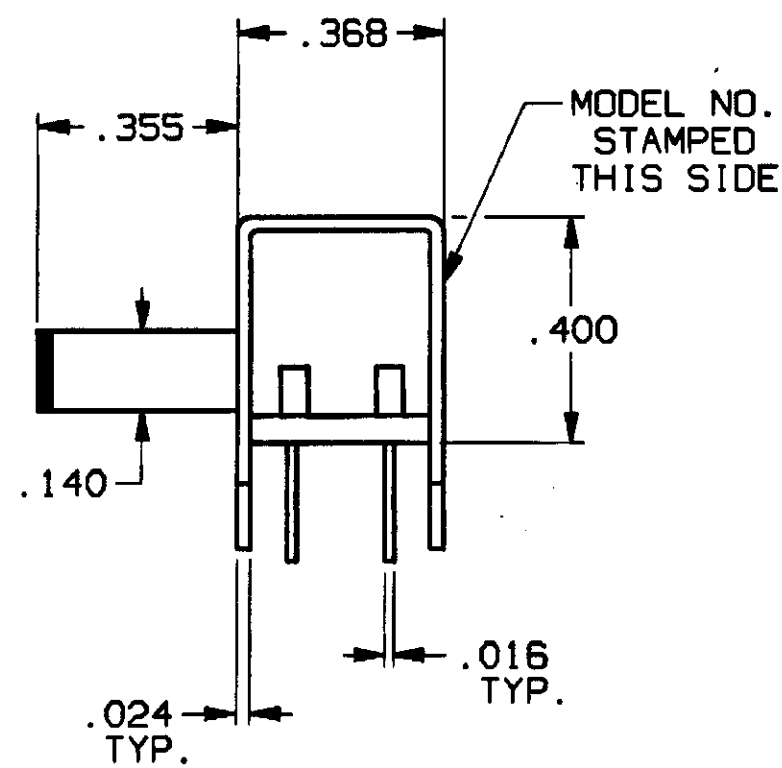


.079 APPROX. TRAVEL

.250



PC HOLE LAYOUT (TOP VIEW)

RECOMMENDED TOLERANCES $\pm .002$ 

SPECIFICATIONS:

MATERIALS:

CASE: COLD ROLLED STEEL.
ACTUATOR: POLYESTER, UL94V-0.
TERMINALS: GOLD OR SILVER PLATE.
TERMINAL SEAL: EPOXY.
CONTACTS, MOVING: COPPER ALLOY, GOLD OR SILVER PLATE.
CONTACTS, FIXED: COPPER ALLOY, GOLD OR SILVER PLATE.

ELECTRICAL:

CONTACT RATING, SILVER: 300 MA @ 125 VAC.
CONTACT RATING, GOLD: 0.4 VA MAX. @ 20 VDC OR PEAK AC.
CONTACT TIMING: SHORTING.
INITIAL CONTACT RESISTANCE: 30 MILLIOHMS MAX.
INSULATION RESISTANCE: 1,000 MEGOHMS MIN.
DIELECTRIC STRENGTH: 500 VOLTS RMS @ SEA LEVEL.
LIFE EXPECTANCY: 15,000 CYCLES.

MECHANICAL:

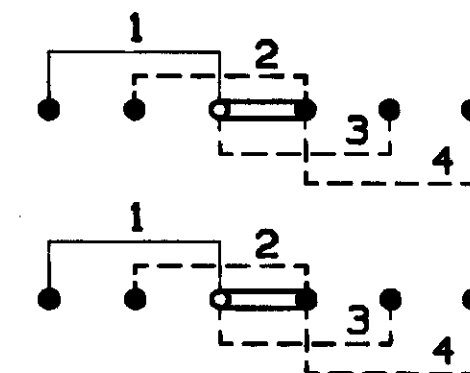
ACTUATION FORCE: 470 GRAMS, AVERAGE.
ACTUATOR TRAVEL: .079 IN.

ENVIRONMENTAL:

OPERATING TEMPERATURE: -4°F TO $+185^{\circ}\text{F}$. (-20°C TO $+85^{\circ}\text{C}$).
STORAGE TEMPERATURE: -40°F TO $+212^{\circ}\text{F}$. (-40°C TO $+100^{\circ}\text{C}$).

NOTES: UNLESS OTHERWISE SPECIFIED

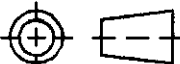
1. INTERPRET DRAWING PER ANSI Y14.5M 1982.

CIRCUIT DIAGRAM
(TOP VIEW)

MODEL NO.	PLATING
MSSA-2450R	SILVER
MSSA-2450RG	GOLD

AUGAT D/N 40115-SD

THIS IS A C.A.D. GENERATED DRAWING.
DO NOT MAKE MANUAL REVISIONS TO MASTER.

CUSTOMER DRAWING				
SPECIFICATIONS ARE SUBJECT TO CHANGES WITHOUT NOTICE				
 THIRD ANGLE PROJECTION	UNLESS OTHERWISE SPECIFIED DIMENSIONS ARE IN MILLI- METERS. DO NOT SCALE PRINT		ORIGINAL DATE OF DRAWING: 9-19-96	
	TOLERANCES (EXCEPT AS NOTED)		DRAWN: C. THEODORE	DATE: 9-19-96
	ANGULAR = ±1° DECIMAL .XXX = ±.010		CHECKED:	DATE:
	AUGAT CONFIDENTIAL This document contains information which is the exclusive property of Augat Inc. Distribution, reproduction or use by others is not permitted without the expressed written consent of Augat Inc.		APPROVED:	DATE:
MATERIAL: SEE SPECIFICATIONS		CODE IDENT. NO. 91506	DWG. SIZE C	
FINISH: SEE SPECIFICATIONS		NEXT ASSY:		

TYCO ELECTRONICS

TITLE: CUSTOMER DRAWING
SLIDE SWITCH, DP 4 POS.
(MSSA-2450R SERIES)

DWG. NO. 5-1437580-9

PRODUCT CODE: A

SCALE: SHEET 1 OF 1

REV A

REVISIONS
0G3C-0173-02

4

3

2

1

Mouser Electronics

Authorized Distributor

Click to View Pricing, Inventory, Delivery & Lifecycle Information:

[TE Connectivity:](#)

[MSSA2450RG](#)