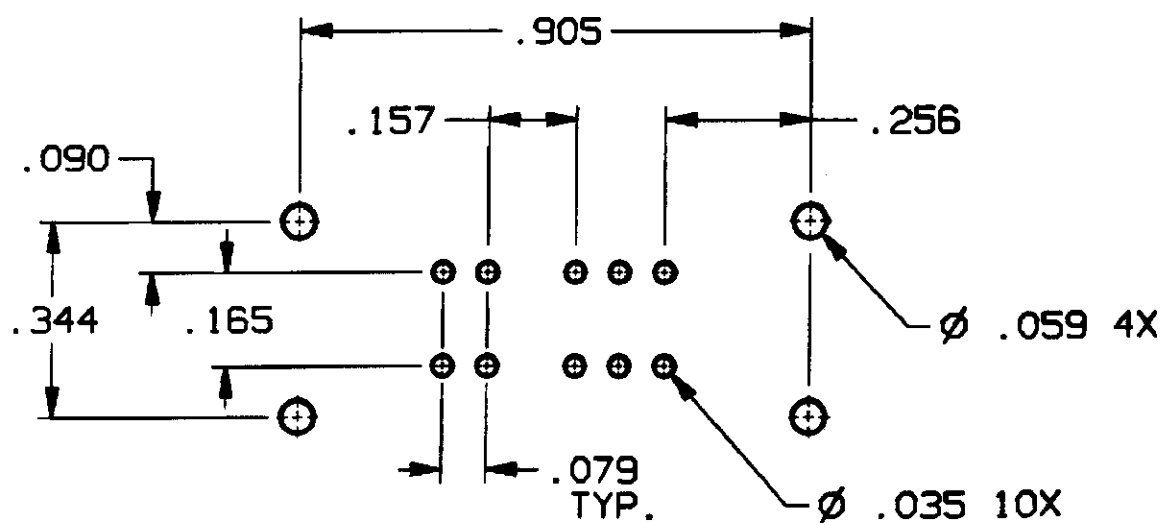
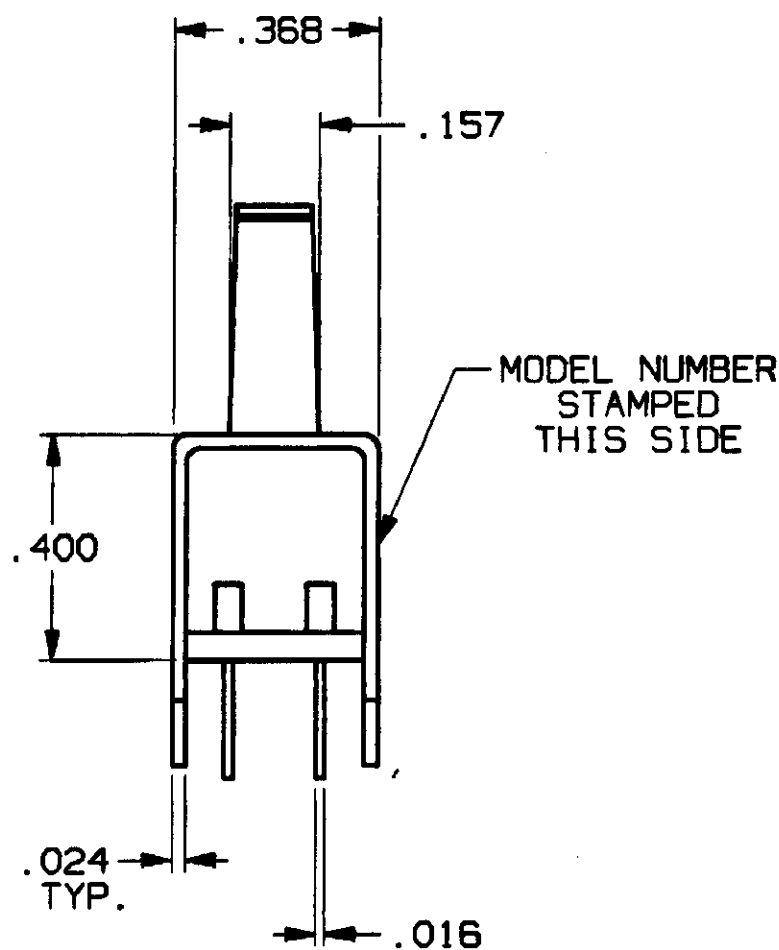
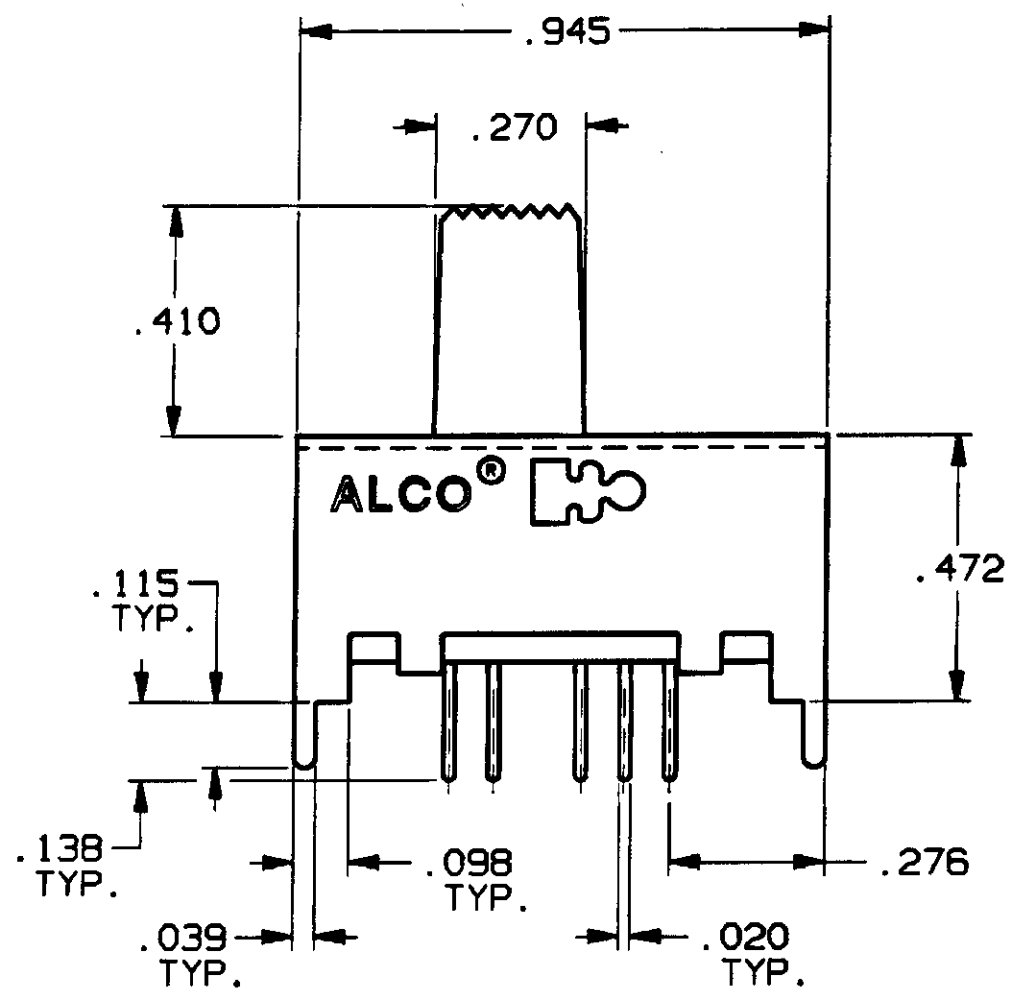
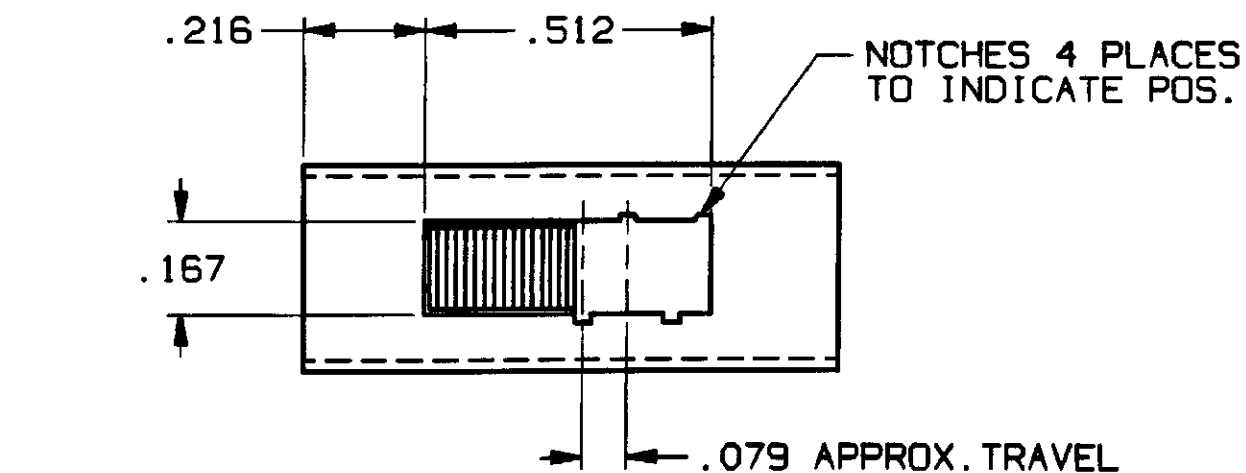


CONVERSION CHART	
INCH	MM
.002	0.05
.010	0.25
.016	0.40
.020	0.50
.024	0.60
.035	0.88
.039	0.99
.059	1.49
.079	2.00
.090	2.28
.098	2.48
.115	2.92
.138	3.50
.157	3.98
.165	4.19
.167	4.24
.216	5.48
.270	6.85
.276	7.01
.344	8.73
.368	9.34
.400	10.16
.410	10.41
.472	11.98
.512	13.00
.905	22.98
.945	24.03



PC BOARD LAYOUT, TOP VIEW  
RECOMMENDED TOLERANCES  $\pm .002$

# SPECIFICATIONS:

**MATERIALS:**  
CASE: COLD ROLLED STEEL.  
ACTUATOR: POLYESTER, UL94V-0.  
TERMINALS: GOLD OR SILVER PLATE.  
TERMINAL SEAL: EPOXY.  
CONTACTS, MOVING: COPPER ALLOY, GOLD OR SILVER PLATE.  
CONTACTS, FIXED: COPPER ALLOY, GOLD OR SILVER PLATE.

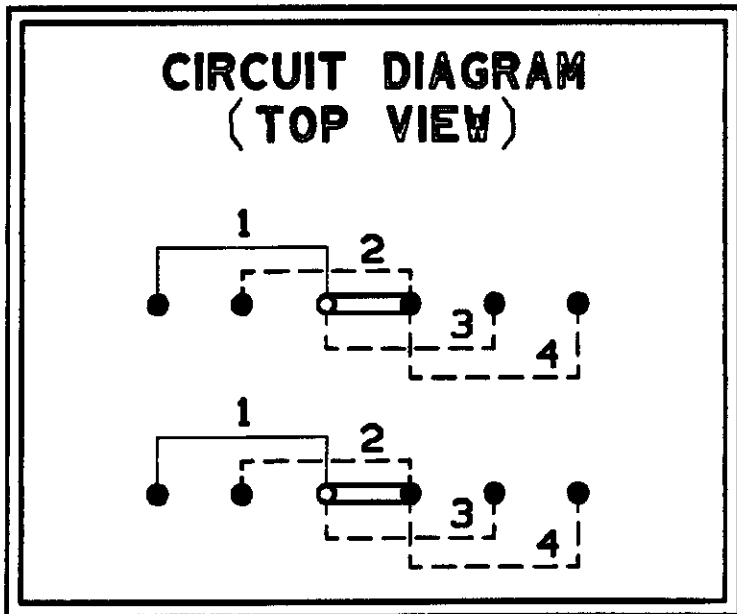
**ELECTRICAL:**  
CONTACT RATING, SILVER: 300 MA  $\bullet$  125 VAC.  
CONTACT RATING, GOLD: 0.4 VA MAX.  $\bullet$  20 VDC OR PEAK AC.  
INITIAL CONTACT RESISTANCE: 30 MILLIOHMS MAX.  
INSULATION RESISTANCE: 1,000 MEGOHMS MIN.  
DIELECTRIC STRENGTH: 500 VOLTS RMS  $\bullet$  SEA LEVEL.  
LIFE EXPECTANCY: 15,000 CYCLES.

**MECHANICAL:**  
ACTUATION FORCE: 600  $\pm$ 300 GRAMS.  
ACTUATOR TRAVEL: .079 IN.

**ENVIRONMENTAL:**  
SOLDER HEAT RESISTANCE:  
OPERATING TEMPERATURE: -4°F TO +185°F, (-20°C TO +85°C).  
STORAGE TEMPERATURE: -40°F TO +212°F, (-40°C TO +100°C).

## NOTES:

- INTERPRET DRAWING PER ANSI Y14.5M 1982.



MODEL NO.	PLATING
MSSA-2450	SILVER
MSSA-2450G	GOLD

AUGAT D/N 40116-SD

THIS IS A C.A.D. GENERATED DRAWING.  
DO NOT MAKE MANUAL REVISIONS TO MASTER.

**TYCO** ELECTRONICS

TITLE: CUSTOMER DRAWING  
SLIDE SWITCH, DP 4 POS.  
(MSSA-2450 SERIES)

DWG. NO. **5-1437580-7**

PRODUCT CODE: **A**

SCALE: SHEET 1 OF 1

CUSTOMER DRAWING			
SPECIFICATIONS ARE SUBJECT TO CHANGES WITHOUT NOTICE			
<p>THIRD ANGLE PROJECTION</p> <p>TOLERANCES (EXCEPT AS NOTED)</p> <p>ANGULAR = <math>\pm 1^\circ</math></p> <p>DECIMAL .XXX = <math>\pm .010</math></p> <p><b>AUGAT CONFIDENTIAL</b> This document contains information which is the exclusive property of Augat Inc. Distribution, reproduction or use by others is not permitted without the expressed written consent of Augat Inc.</p>	UNLESS OTHERWISE SPECIFIED DIMENSIONS ARE IN MILLI-METERS. DO NOT SCALE PRINT		ORIGINAL DATE OF DRAWING: 9-23-96
	MATERIAL: SEE SPECIFICATIONS		DRAWN: C. THEODORE DATE: 9-23-96
	FINISH: SEE SPECIFICATIONS		CHECKED: DATE: APPROVED: DATE:
		CODE IDENT. NO. 91506	DWG. SIZE C
		NEXT ASSY:	

REV	A
REVISIONS	063C-0173-02

# Mouser Electronics

Authorized Distributor

Click to View Pricing, Inventory, Delivery & Lifecycle Information:

[TE Connectivity:](#)

[MSSA2450](#)