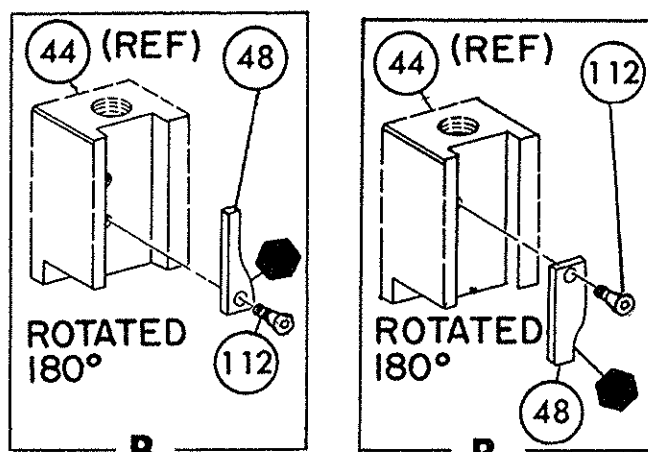


PRE-FEED
1 1/8" STROKE



NOTES:

1- ONLY THE ITEMS WITH QUANTITIES SPECIFIED ON PARTS LIST ARE USED ON THIS APPLICATOR.

2- USED IN PLACE OF ITEM 38 WHEN INSULATION CRIMP IS NOT USED.

3- GUARD MUST BE IN PLACE WHEN OPERATING APPLICATOR IN AMP-O-ELECTRIC PRESS.

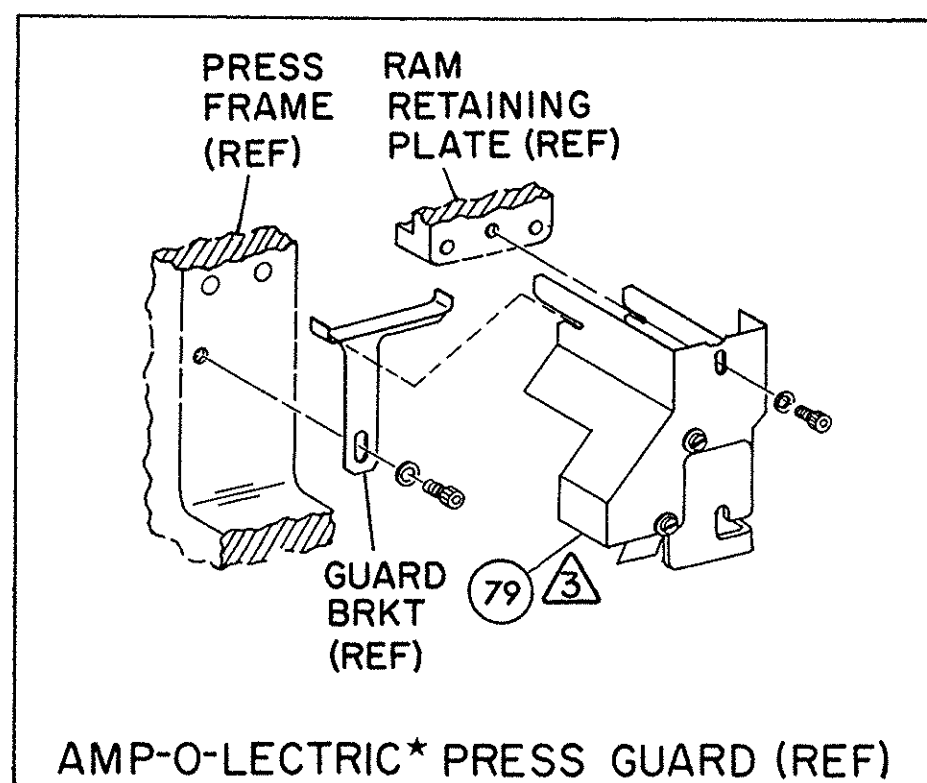
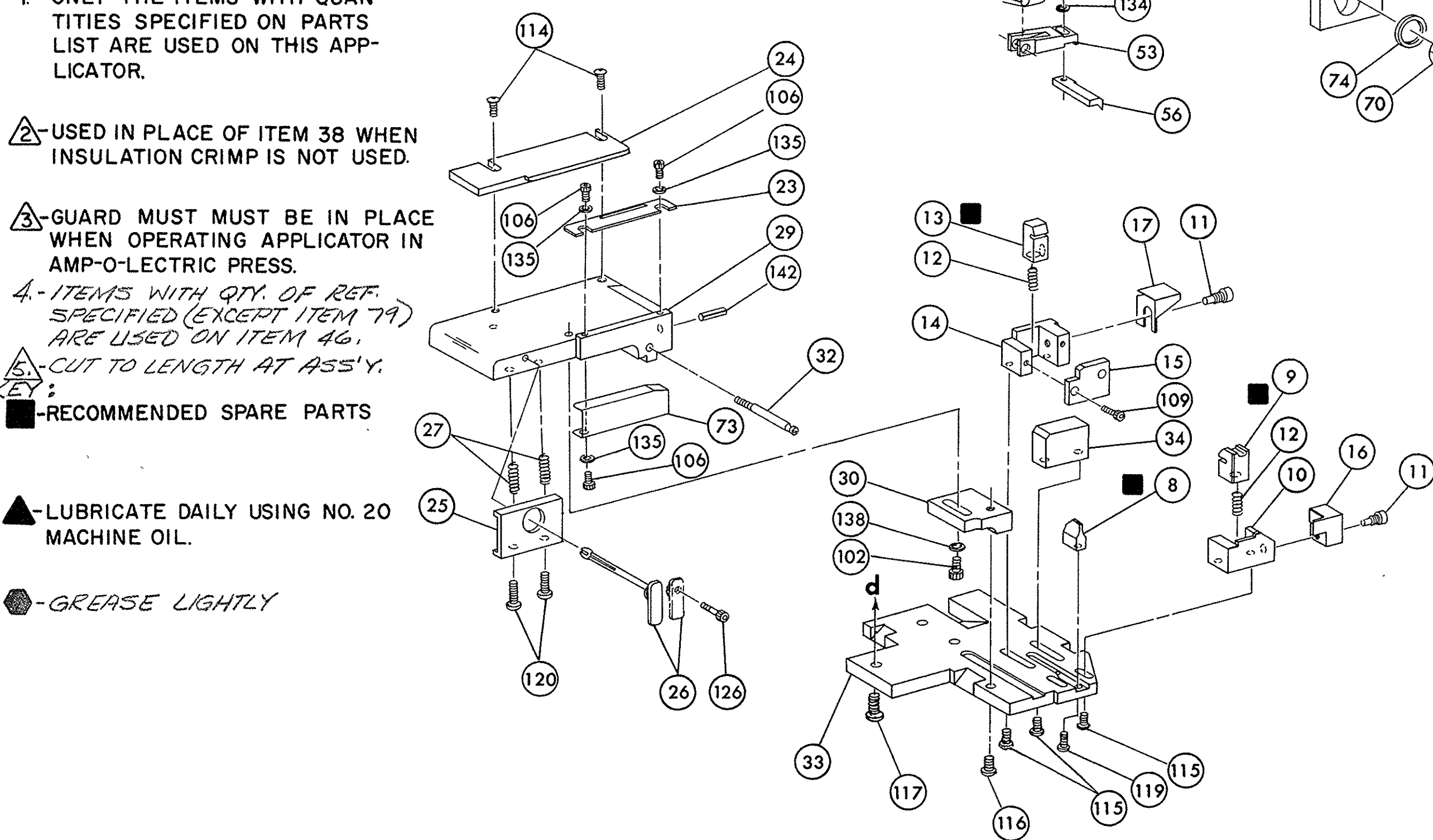
4- ITEMS WITH QTY. OF REF. SPECIFIED (EXCEPT ITEM 79) ARE USED ON ITEM 46.

5- CUT TO LENGTH AT ASS'Y.

KEY:
■ - RECOMMENDED SPARE PARTS

▲ - LUBRICATE DAILY USING NO. 20 MACHINE OIL.

● - GREASE LIGHTLY



REF.	21045-3	RING, RETAINING 'C' (.187 DIA) FEED FINGER PIN	145	REF.	454220-1	CAP, HOUSING	59
REF.	5-21028-1	PIN, SLOT SPR (.125 DIA X .50) ADJ ROD	144	REF.	454485-1	HOUSING	58
1	4-21028-0	PIN, SLOT SPR (.093 DIA X .75) STR G PLATE	143	1	690542-2	PAWL, FEED	57
REF.	1-21030-1	PIN, DOWEL (.187 DIA X .50) LEVER	142	REF.	240624-1	PIN, FEED FINGER	56
REF.	1-21030-6	PIN, DOWEL (.187 DIA X 1.25) HOUSING	141	REF.	691499-1	SPRING, FEED FINGER	55
1	21024-5	WASHER, LOCK (NO 10) LUB ASSY	140	REF.	690541-1	FINGER, FEED	54
1	21024-5	WASHER, LOCK (NO 10) STRIP GUIDE ADJ BLOCK	139	REF.	455679-1	LEVER, TERMINAL FEED ARM	53
REF.	21024-5	WASHER, LOCK (NO 10) ADJ PLATE	138	1	811242-2	BUMPER, HOLDDOWN	52
REF.	21024-5	WASHER, LOCK (NO 10) FEED GUIDE ROD	137	1	690753-1	SPACER, TONKER	51
3	21057-2	WASHER, LOCK (NO 4) FRONT STRIP GUIDE	136	1	7-21002-9	BOLT, CRIMPER	50
1	21024-4	WASHER, LOCK (NO 8) FEED FINGER	135	1	690501-4	CAM POST-FEED 1 5/8 STROKE	49
2	21024-4	WASHER, LOCK (NO 8) DEPRESSOR	134	1			48
1	21024-4	WASHER, LOCK (NO 8) STRIPPER	133				47
REF.	21899-4	WASHER, FLAT (5/16 DIA) SCREW ADJ	132	1	459456-1	APPLICATOR, BASIC (SUB ASSY)	46
REF.	21899-2	WASHER, FLAT (NO 10) LUB ASSY	131	1	690191-1	PLUG, NYLON	45
1	21068-5	NUT, HEX MACH (6-32) HOLDDOWN	130	1	455673-1	RAM	44
REF.	21068-5	NUT, HEX MACH (6-32) FEED ADJ	129	1	690125-1	WASHER, LAMINATED	43
1			128	1	690124-1	WASHER, RAM	42
1			127			DISC, SPACER	41
1	22353-8	SCR, SHLD. (.187 DIA X .250 LG) DRAG LEVER	126	2	23241-6	BALL, STEEL	40
1	21009-2	SCR, SKT SET (1/4-20 X .25) (LOC-WEL) RAM	125	2	690170-1	SPRING, COMPRESSION	39
REF.	6-23715-4	SCR, PAN HD MACH (6-32 X 1.25) FEED ADJ	124	1	690142-1	DISC, INSULATION	38
2	321002-0	SCR, BUT HD SKT CAP (10-32 X .88) DRAG	123	1	9-690692-9	DISC, WIRE	37
1	22733-8	SCR, BUT HD SKT CAP (8-32 X .38) (LOC-WEL) ANVIL	122	1	22480-5	WASHER, SPRING	36
REF.	2-21002-9	SCR, BUT HD SKT CAP (10-32 X .75) CAP	121	1	690212-1	POST, RAM	35
REF.	2-22733-8	SCR, BUT HD SKT CAP (1/4-20 X .62) HOUSING	120			SUPPORT, TERMINAL	34
REF.	2-21002-7	SCR, BUT HD SKT CAP (10-32 X .50) SG ADJ BLOCK	119	REF.	455675-1	PLATE, BASE	33
2	2-21002-2	SCR, BUT HD SKT CAP (8-32 X .50) SHEAR	118	1	690432-3	SCREW, ADJUSTMENT	32
2	2-21000-2	SCR, BUT HD SKT CAP (8-32 X .50) R STRIP GUIDE	117				31
1	1-21002-7	SCR, BUT HD SKT CAP (6-32 X .38) CAM	116	REF.	455689-1	BLOCK, STRIP GUIDE ADJ	30
1	3-21000-4	SCR, SKT HD CAP (10-32 X .38) LUBRICATOR ASSY	115	1	1-458144-3	PLATE, STRIP GUIDE	29
2	23030-1	SCR, SKT HD CAP (6-32 X .25) (LOC-WEL) CP DISC	114	1	1-455888-0	SPACER, FRONT SHEAR DEPRESSOR	28
2	2-21000-7	SCR, SKT HD CAP (8-32 X .48) DEPRESSOR	113	2	1-22284-0	SPRING, DRAG	27
1	2-22603-0	SCR, HEX HD MACH (8-32 X .31) FEED FINGER	112	1	240793-1	LEVER, DRAG RELEASE	26
3	1-21000-3	SCR, SKT HD CAP (4-40 X .25) F STRIP GUIDE	111	1	240792-1	DRAG, STOCK	25
1	2-21000-7	SCR, SKT HD CAP (8-32 X .50) STRIPPER	110	1	690504-8	GUIDE STRIP (REAR)	24
REF.	3-21000-6	SCR, SKT HD CAP (10-32 X .75) FEED ROD GUIDE	109	1	690438-1	GUIDE, STRIP (FRONT)	23
REF.	3-21000-6	SCR, SKT HD CAP (10-32 X .62) FEED ADJ BLOCK	108				22
1	3-21000-4	SCR, SKT HD CAP (10-32 X .38) SG ADJ BLOCK	107	REF.	4-22284-9	SPRING, FEED RETURN	21
REF.	3-21000-4	SCR, SKT HD CAP (10-32 X .38) PIVOT BLOCK	106				20
REF.	455749-1	GUARD, WINDOW	105	1	690472-4	STRIPPER	19
1	1-465184-0	LUBRICATOR ASSY	104				18
1	461264-1	PLATE, IDENTIFICATION	103				17
2	21017-2	SCR, DRIVE (2 X .19) ID PLATE	102				16
REF.	458109-1	WASHER, SPECIAL	101		691667-1	GUARD, CHIP (FRONT)	15
1	454877-3	PLATE, STRIP GUIDE COVER	100				14
2	690603-1	SPRING, ASSIST	99				13
REF.	690517-1	SPACER	98				12
1	22594-8	NUT, HEX	97		5-22280-0	SPRING, SHEAR	11
1	240628-1	PLATE, ADJUSTMENT	96		690461-1	STOP, SHEAR	10
1	240626-1	SHAFT, PIVOT	95		690459-1	HOLDER, SHEAR (FRONT)	9
1	240633-1	BUSHING	94		454876-1	SHEAR, FLOAT (FRONT)	8
1	455680-1	LEVER, INTERMEDIATE	93		454910-1	ANVIL	7
1	240629-1	BLOCK, PIVOT	92				6
1	240632-2	SCREW, ADJUSTMENT FEED ROD	91				5
1	240659-3	PIN, CAM ROLLER	90				4
1	240658-1	ROLLER, CAM	89				3
1	454398-2	ROD, FEED	88				2
REF.	454178-1	GUIDE, FEED ROD	87				1

QTY	PART NO	DESCRIPTION	ITEM NO
1	461264-1	PLATE, IDENTIFICATION	76
2	21017-2	SCR, DRIVE (2 X .19) ID PLATE	75
REF.	458109-1	WASHER, SPECIAL	74
1	454877-3	PLATE, STRIP GUIDE COVER	73
2	690603-1	SPRING, ASSIST	72
REF.	690517-1	SPACER	71
1	22594-8	NUT, HEX	70
1	240628-1	PLATE, ADJUSTMENT	69
1	240626-1	SHAFT, PIVOT	68
1	240633-1	BUSHING	67
1	455680-1	LEVER, INTERMEDIATE	66
1	240629-1	BLOCK, PIVOT	65
1	240632-2	SCREW, ADJUSTMENT FEED ROD	64
1	240659-3	PIN, CAM ROLLER	63
1	240658-1	ROLLER, CAM	62
1	454398-2	ROD, FEED	61
REF.	454178-1	GUIDE, FEED ROD	60

REMARKS	NO	REV
APPL USED ON MACHINE PART NO	MACH SERIAL NO	DISTRIBUTION
CUSTOMER NAME	APPL SERIAL NO	ORIGINAL
ADDRESS	PURCHASE ORDER	CUSTOMER COPY
CITY	ENG APP	FIELD ENG COPY

CRIMP	SIZE	TYPE	FEED	APPL INST
WIRE	.070	F	.440	A1 8040
INSUL	.140	O		

WIRE RANGE	INSULATION RANGE	PRESS NO
22-18	.060-.100	

REMARKS	POST-FEED AMPOMATOR
FEED SIDE ONLY	

INS. RANGE	INS. RANGE
63242	63242

ECN A-405592	10-92	SET UP GAGE	10-1
ECN A157588	11-88	OR 9-10-12	APP
ECN A-093788	12-88	OR 9-10-12	APP
REV PER ECN R-4689	12-88	OR 9-10-12	APP
REV PER ECN R-301	12-88	OR 9-10-12	APP
REV PER R-2666	12-88	OR 9-10-12	APP
REV PER ECN R1756	12-88	OR 9-10-12	APP

PIF LTR	REVISION RECORD	APP DATE	PIF LTR	REVISION RECORD	APP DATE

ECN A-405592	10-92	SET UP GAGE	10-1
ECN A157588	11-88	OR 9-10-12	APP
ECN A-093788	12-88	OR 9-10-12	APP
REV PER ECN R-4689	12-88	OR 9-10-12	APP
REV PER ECN R-301	12-88	OR 9-10-12	APP
REV PER R-2666	12-88	OR 9-10-12	APP
REV PER ECN R1756	12-88	OR 9-10-12	APP

PIF LTR	REVISION RECORD	APP DATE	PIF LTR	REVISION RECORD	APP DATE
	</				

Mouser Electronics

Authorized Distributor

Click to View Pricing, Inventory, Delivery & Lifecycle Information:

[TE Connectivity:](#)

[466501-1](#)