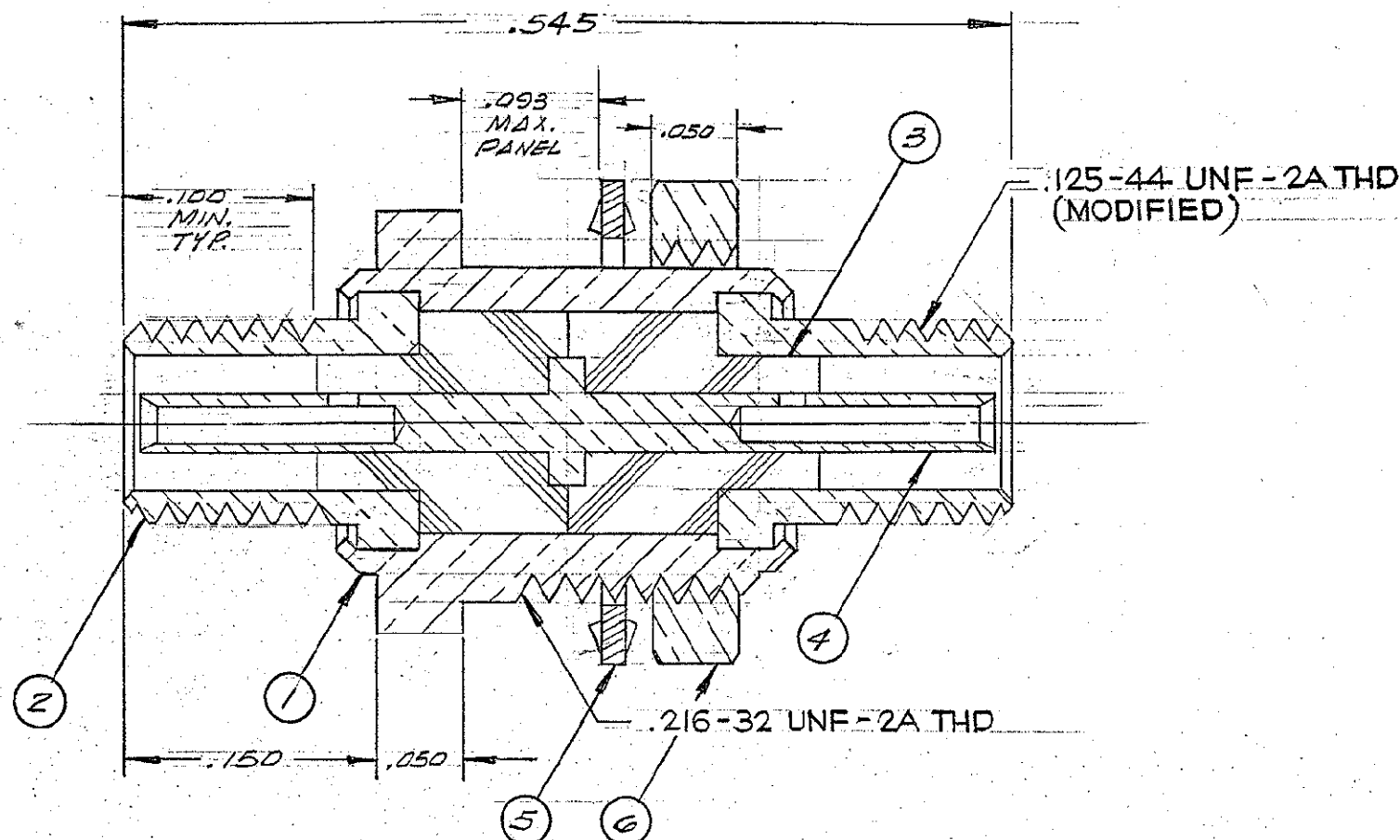
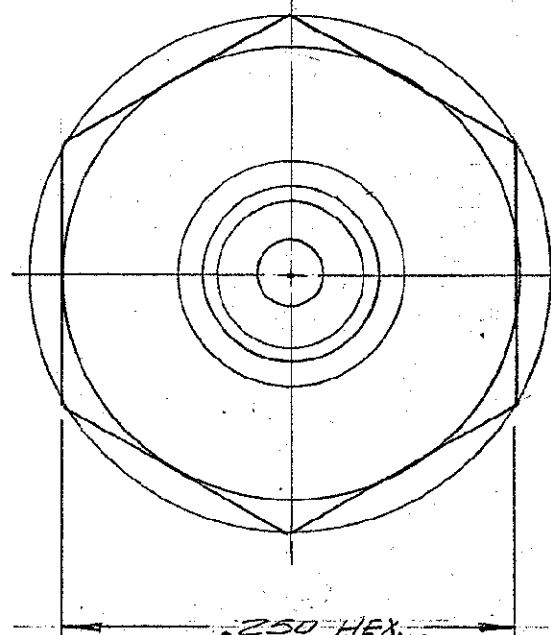


CODE 143-0005-0001 C

These drawings and specifications are the property of Microdot Inc., are issued in strict confidence and shall not be divulged, be reproduced or copied, or used as the basis for the manufacture or sale of any article without written permission of Microdot Inc.



1	014-0062-0002	NUT	BRASS, PER QQ-B-626	2	6
1	014-0063-0002	LOCK WASHER	#425 BRONZE ALLOY	2	5
1	014-0061-0002	CONTACT	COPPER ALLOY	2	4
2	014-0060-0001	INSULATOR	TEFLON, L-P-403		3
2	014-0059-0002	ADAPTER	BRASS, PER QQ-B-626	2	2
1	014-0058-0002	HOUSING	BRASS, PER QQ-B-626	2	1
QTY	PART NUMBER	NOMENCLATURE	MAT'L & SPEC.	FINISH	ITEM

### 3. ELECTRICAL REQUIREMENTS:

TEST VOLTAGE 450 V.R.M.S.  
INSULATION RESISTANCE 10<sup>9</sup> MEG OHMS MIN.

2. GOLD PLATE PER MIL-G-45204, TYPE II, CLASS 1.

1. THIS CONNECTOR MATES WITH ALL LEPRACON 142 SCREW-ON-SERIES PLUGS.

NOTES: UNLESS OTHERWISE SPECIFIED

CX2043

STANDARD TOLERANCES  
UNLESS OTHERWISE SPECIFIED  
DEC. ± .010  
FRAC. ±  
ANGLES ±  
ECCENTRICITY  
MAX. T.I.R.  
HOLE DIA. ±  
SURFACE ROUGHNESS  
MICRO INCHES  
THREADS TO MIL-S-7742  
COMMERCIAL TOLERANCES  
APPLY TO STOCK DIMENSIONS

**MALCO**  
A MICRODOT COMPANY, INC.  
220 PASADENA AVE., SO. PASADENA, CAL

SURFACE TREATMENT NOTED  
MATERIAL NOTED  
APP. 6/22/67  
APP.  
CHECKED BY E. J. JANSSEN  
DRAWN BY E. J. JANSSEN  
SCALE 10X  
WT  
DATE 9/17/67

LEPRACON FEED THRU  
ADAPTER

ASSEMBLY	NO REQ'D	LET	ECO	REVISION DESCRIPTION	BY	DATE	APP	PROD CODE	CODE	DRAWING NUMBER
				C 405% UPDATE REVISION LETTER	CS	9/24/67		946	CDM	143-0005-0001 C
				B 2895% ITEM 5 MAT'L WAS: P/BRZE QQ-B-750	LM	11/1/67				
				A 4% RELEASED FOR PRODUCTION	EJ	9/22/67				

# Mouser Electronics

Authorized Distributor

Click to View Pricing, Inventory, Delivery & Lifecycle Information:

[TE Connectivity:](#)

[143-0005-0001](#)