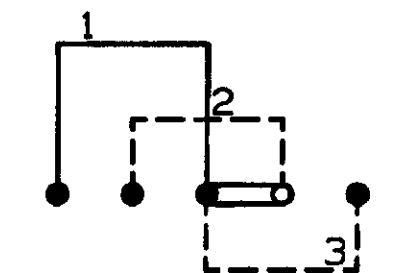
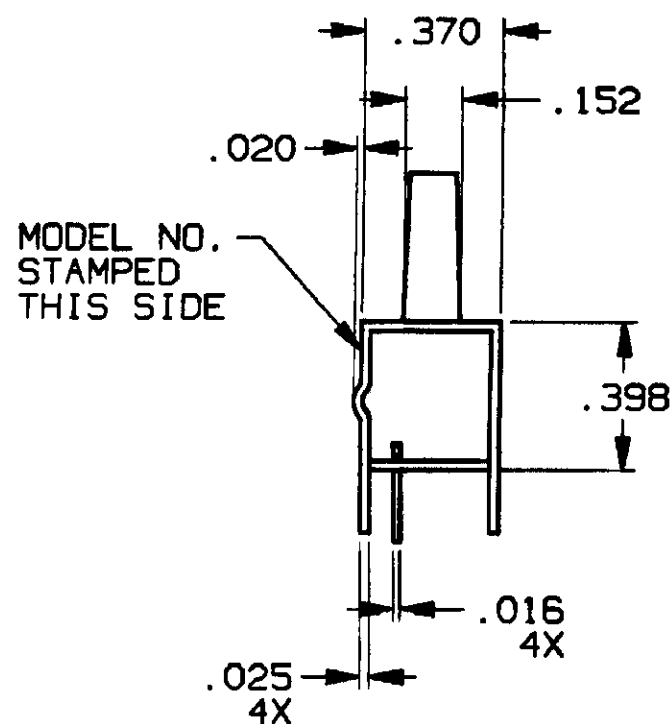
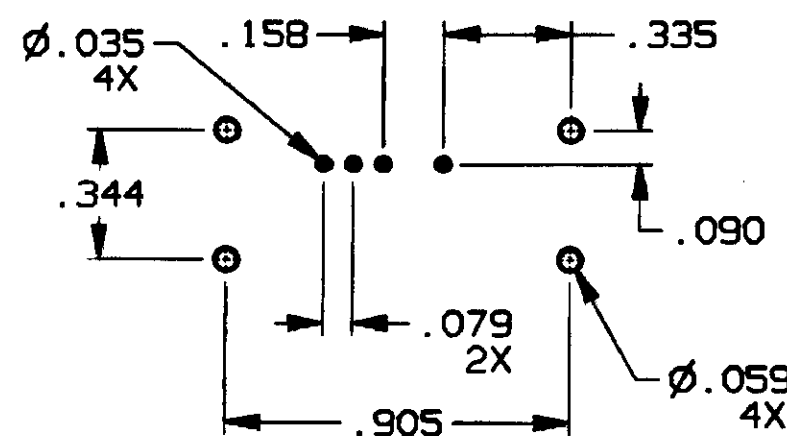
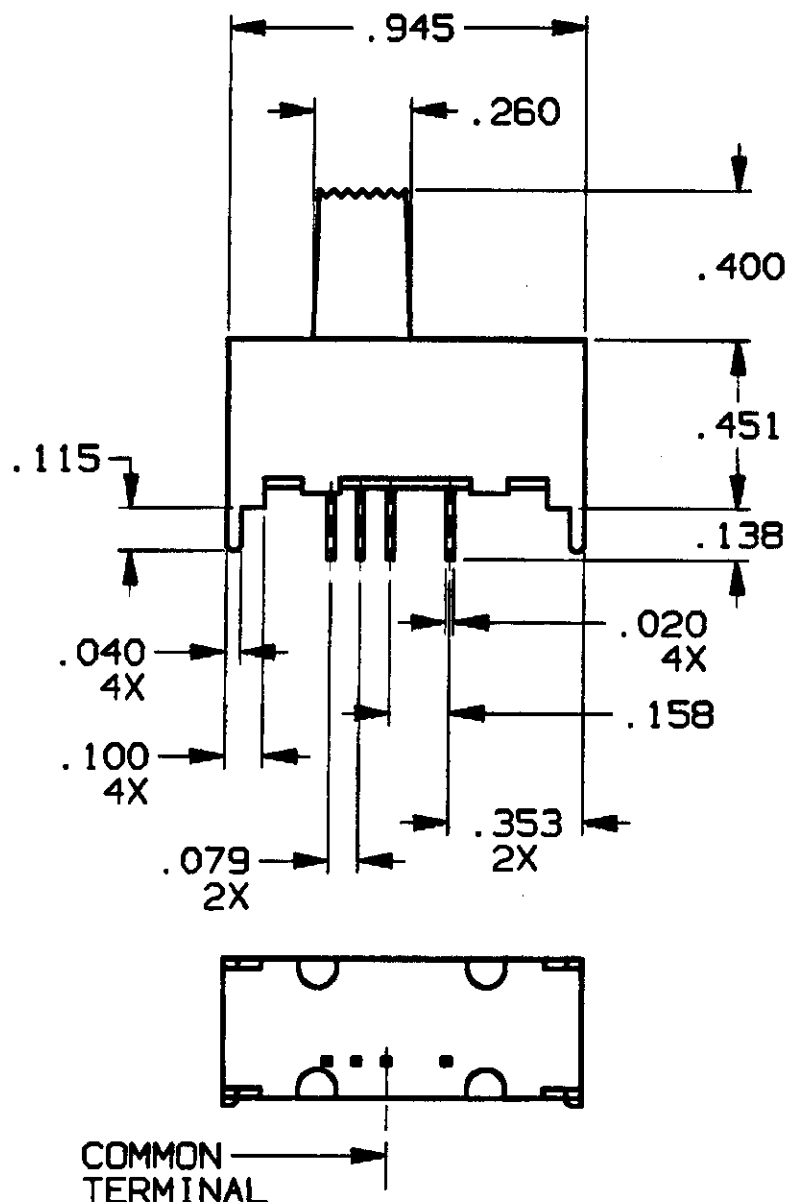
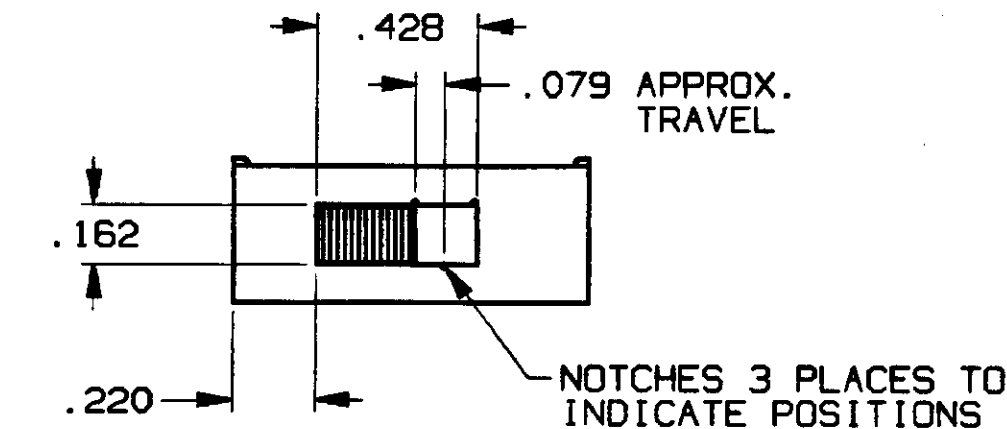


CONVERSION CHART			
INCH	MM	INCH	MM
.002	0.05	.905	22.99
.015	0.38	.945	24.00



CIRCUIT DIAGRAM



RECOMMENDED HOLE LAYOUT

TOLERANCE $\pm .002$ UNLESS OTHERWISE NOTED

SPECIFICATIONS:

MATERIALS:

CASE: COLD ROLLED STEEL.
ACTUATOR: POLYESTER, UL94V-0.
MOVING CONTACT: COPPER ALLOY, SEE CHART FOR PLATING.
TERMINAL/FIXED CONTACT: COPPER ALLOY, SEE CHART FOR PLATING.
TERMINAL SEAL: EPOXY.

ELECTRICAL:

CONTACT RATING: SILVER: 300mA \bullet 125 VAC
GOLD: 0.4 VA MAX. \bullet 20 VDC OR PEAK AC.
INITIAL CONTACT RESISTANCE: 30 MILLIOHMS MAX.
INSULATION RESISTANCE: 1.00 MEGOHMS MIN.
DIELECTRIC STRENGTH: 500 VOLTS RMS \bullet SEA LEVEL.
LIFE EXPECTANCY: 15,000 CYCLES.
CONTACT TIMING: MAKE BEFORE BREAK.

MECHANICAL:

ACTUATION FORCE: 600 \pm 300 GRAMS.
ACTUATION TRAVEL: .079 IN.

ENVIRONMENTAL:

OPERATING TEMPERATURE: -4°F TO $+185^{\circ}\text{F}$ (-20°C TO $+85^{\circ}\text{C}$).
STORAGE TEMPERATURE: -40°F TO $+212^{\circ}\text{F}$ (-40°C TO $+100^{\circ}\text{C}$).

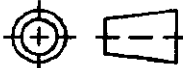
NOTES:

1. INTERPRET DRAWING PER ANSI Y14.5M-1982.

MODEL NO.	CONTACT PLATING
MSSA-1350	SILVER OVER NICKEL
MSSA-1350G	GOLD OVER NICKEL

AUGAT D/N 40238-SD

THIS IS A C.A.D. GENERATED DRAWING.
DO NOT MAKE MANUAL REVISIONS TO MASTER.

CUSTOMER DRAWING					
SPECIFICATIONS ARE SUBJECT TO CHANGES WITHOUT NOTICE					
 THIRD ANGLE PROJECTION		UNLESS OTHERWISE SPECIFIED DIMENSIONS ARE IN INCHES DO NOT SCALE PRINT		ORIGINAL DATE OF DRAWING: 9-20-96	
TOLERANCES (EXCEPT AS NOTED) ANGULAR = ±1° DECIMAL .XX = ± DECIMAL .XXX = ±.015 DECIMAL .XXXX = ±				DRAWN: S.KIRCORIAN DATE: 9-20-96	
		MATERIAL: SEE SPECIFICATIONS		CHECKED: DATE:	
TYCO CONFIDENTIAL This document contains information which is the exclusive property of TYCO ELECTRONICS Distribution, reproduction or use by others is not permitted without the expressed written consent of Augat Inc.		FINISH: SEE SPECIFICATIONS		APPROVED: DATE: 12/2/96	
				CODE IDENT. NO. DWG. SIZE	
				91506 C	
				NEXT ASSY:	

<p>TYCO ELECTRONICS</p>	
<p>TITLE: CUSTOMER DRAWING SLIDE SWITCH (MSSA 1350 & 1350G)</p>	
<p>DWG. NO.</p>	<p>REV.</p>
<p>3-1437580-3</p>	<p>A</p>
<p>PRODUCT CODE: CS2</p>	
<p>SHEET 1 OF 1</p>	

REV	A
REVISIONS	OG3C-0173-02

Mouser Electronics

Authorized Distributor

Click to View Pricing, Inventory, Delivery & Lifecycle Information:

[TE Connectivity:](#)

[MSSA1350](#)