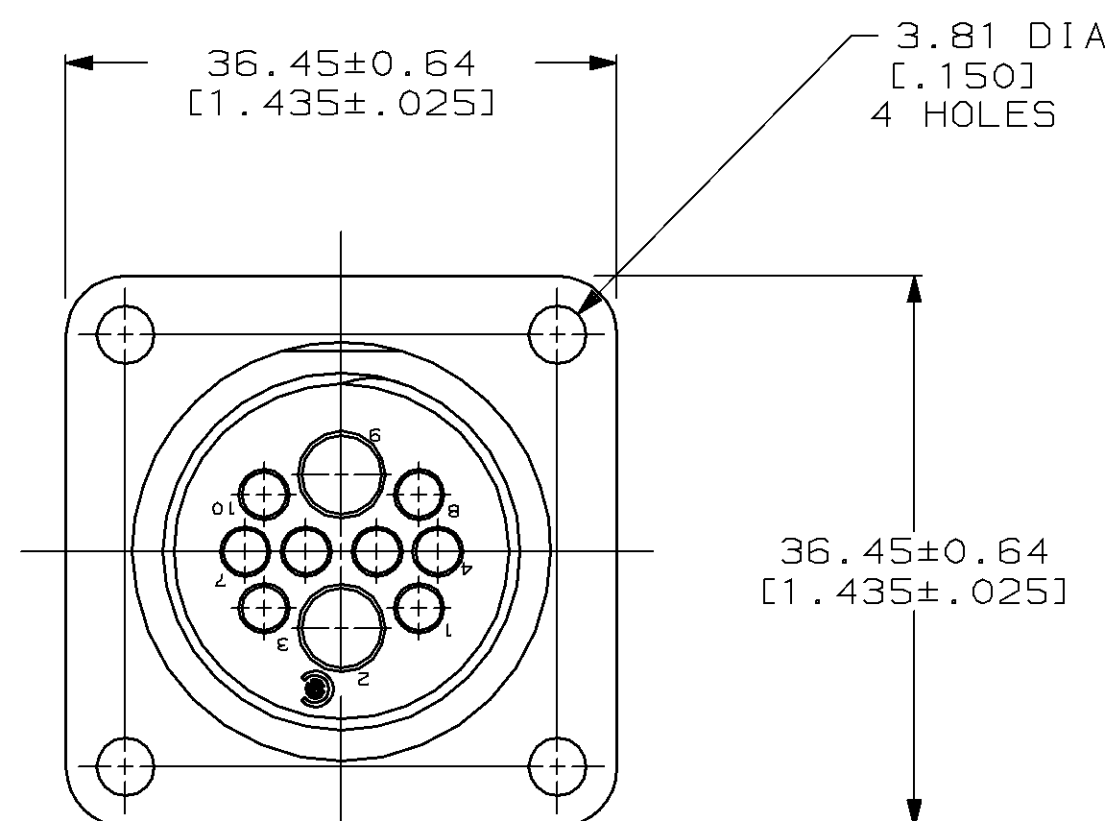



RECOMMENDED PANEL CUTOUT

1. THIS CONNECTOR WILL ACCEPT TWO TYPE I, SIZE 12 SOCKET CONTACTS AND EIGHT MULTIMATE SOCKET CONTACTS.
2. TYPE I CONTACTS MATE FIRST, BREAK LAST.
3. MAX WIRE INSULATION USED WITH THIS RECEPTACLE IS 2.67[.105] DIA FOR MULTIMATE SOCKET CONTACTS.



213128-1

PART
NUMBER

THIS DRAWING IS A CONTROLLED DOCUMENT FOR AMP INCORPORATED. IT IS SUBJECT TO CHANGE AND THE CONTROLLING ENGINEERING ORGANIZATION SHOULD BE CONTACTED FOR THE LATEST REVISION.		DWN 05/18/95 C. OBERMAN		AMP Incorporated Harrisburg, PA 17105-3608	
DIMENSIONS: mm [INCHES]		TOLERANCES UNLESS OTHERWISE SPECIFIED,		AMP	
		0 PLC ±- 1 PLC ±- 2 PLC ±0.25 (.010) 3 PLC ±0.250 (.0100) 4 PLC ±- ANGLES ±-		CHK 5-23-95 R. STONE APVD 5-25-95 A. FRANTUM	
MATERIAL NYLON, BLACK		FINISH -		NAME RECEPTACLE, ARR 17-10M, REVERSE SEX, SERIES 4, CLASS A, SQUARE FLANGE, CPC	
		WEIGHT -		SIZE A2	CAGE CODE 00779
		CUSTOMER DRAWING		DRAWING NO C-213128	SCALE 2:1 SHEET 1 OF 1 REV A

Mouser Electronics

Authorized Distributor

Click to View Pricing, Inventory, Delivery & Lifecycle Information:

[TE Connectivity:](#)

[213128-1](#)