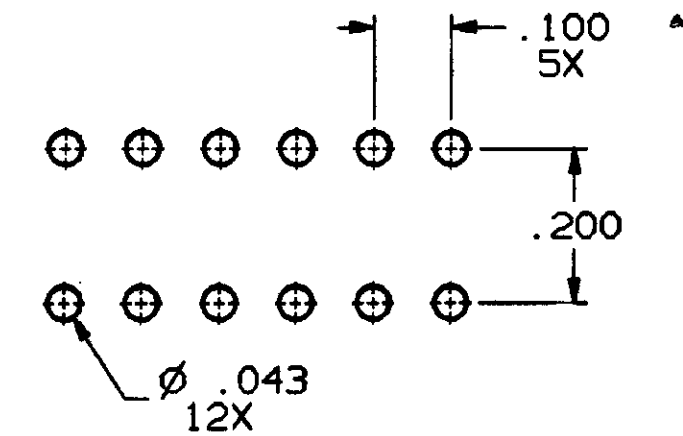
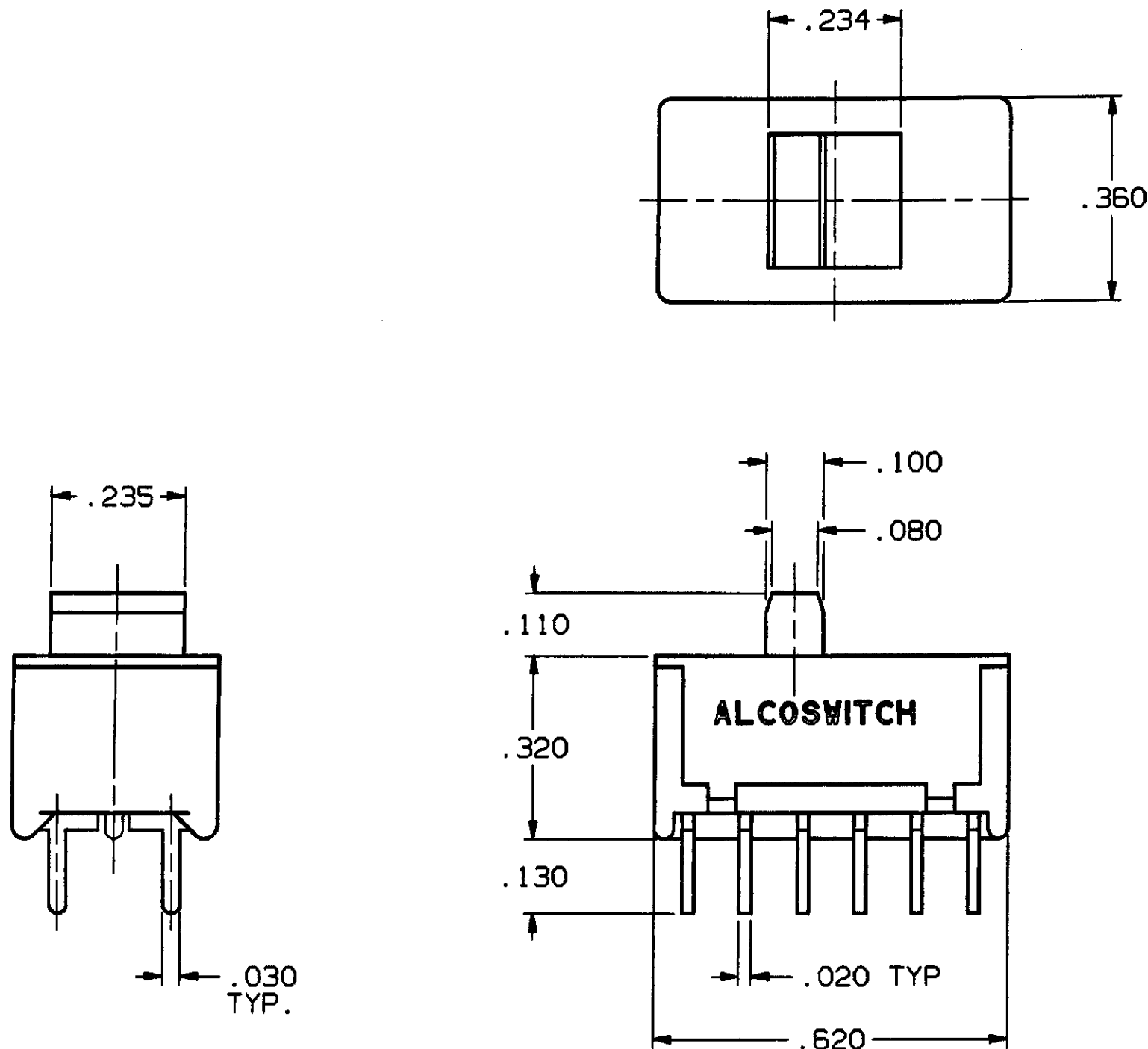


| CONVERSION CHART | |
|------------------|-------|
| INCH | MM |
| .002 | 0.05 |
| .010 | 0.25 |
| .020 | 0.51 |
| .030 | 0.76 |
| .043 | 1.09 |
| .080 | 2.03 |
| .100 | 2.54 |
| .110 | 2.79 |
| .130 | 3.30 |
| .200 | 5.08 |
| .234 | 5.94 |
| .235 | 5.97 |
| .320 | 8.13 |
| .360 | 9.14 |
| .620 | 15.75 |



PC LAYOUT
PC LAYOUT TOLERANCE: ±.002

SPECIFICATIONS:

MATERIALS:
CASE: HIGH TEMPERATURE POLYESTER, (94V-0)
FRAME: STEEL
ACTUATOR: POLYESTER (94V-0)
MOVABLE CONTACT: GOLD PLATE OVER COPPER ALLOY
STATIONARY CONTACT: GOLD PLATE OVER COPPER ALLOY
TERMINALS: TIN LEAD PLATE

ELECTRICAL:
CONTACT RATING: 0.4VA MAX. @ 20 VDC OR PEAK AC
CONTACT RESISTANCE: 40 MILLIOHMS MAX.
INSULATION RESISTANCE: 1,000 MEGOHMS MIN. @ 500 VDC
DIELECTRIC STRENGTH: 1,000 VOLTS RMS AT SEA LEVEL
LIFE EXPECTANCY: 60,000-80,000 CYCLES

ENVIRONMENTAL:
OPERATING TEMPERATURE: -20°C TO +80°C (-4°F TO 176°F)
STORAGE TEMPERATURE: -20°C TO +80°C (-4°F TO 176°F)

NOTES:

1. INTERPRET DRAWING PER ASME Y14.5M-1994.

TERMINAL DESIGNATION NUMBERS ARE FOR REFERENCE ONLY AND DO NOT APPEAR ON SWITCHES.

1 2 3 7 8 9

4 5 6 10 11 12

TERMINALS CONNECTED WHEN SLIDE IS IN POSITIONS SHOWN.

AUGAT D/N 40151-SD

| REV | A |
|-----------|--------------|
| REVISIONS | 063C-0173-02 |

CAD080932C

THIS IS A C.A.D. GENERATED DRAWING.
DO NOT MAKE MANUAL REVISIONS TO MASTER.

THIRD ANGLE PROJECTION

TOLERANCES (EXCEPT AS NOTED)

ANGULAR = ±1°

DECIMAL .XX = ±

DECIMAL .XXX = ±.010

DECIMAL .XXXX = ±

TYCO CONFIDENTIAL

This document contains information which is the exclusive property of TYCO ELECTRONICS. Distribution, reproduction or use by others is not permitted without the expressed written consent of Augat Inc.

CUSTOMER DRAWING

SPECIFICATIONS ARE SUBJECT TO CHANGES WITHOUT NOTICE

UNLESS OTHERWISE SPECIFIED DIMENSIONS ARE IN INCHES DO NOT SCALE PRINT

FILE NAME: 40151OUT DIRECTORY: SLDSWCH

MATERIAL: SEE SPECIFICATIONS

FINISH: SEE SPECIFICATIONS

ORIGINAL DATE OF DRAWING: 8-10-83

DRAWN: V.J.M. DATE: 8-10-83

CHECKED: B.B. DATE: 8-18-83

APPROVED: A.K. DATE: 8-19-83

CODE IDENT. NO. 91506 DWG. SIZE C

NEXT ASSY:

tyco
Electronics

TITLE: CUSTOMER DRAWING
SLIDE SWITCH (4 POLE)
(TSS41NG-PC)

DWG. NO. 2-1437579-5 REV. A

PRODUCT CODE: CSI

SCALE: SHEET 1 OF 1

Mouser Electronics

Authorized Distributor

Click to View Pricing, Inventory, Delivery & Lifecycle Information:

[TE Connectivity:](#)

[TSS41NGPC](#)