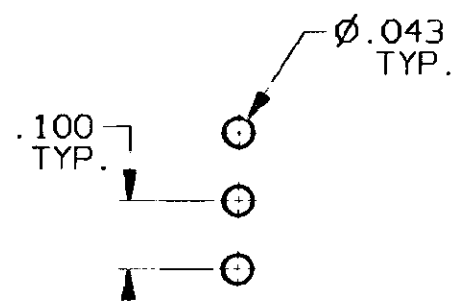
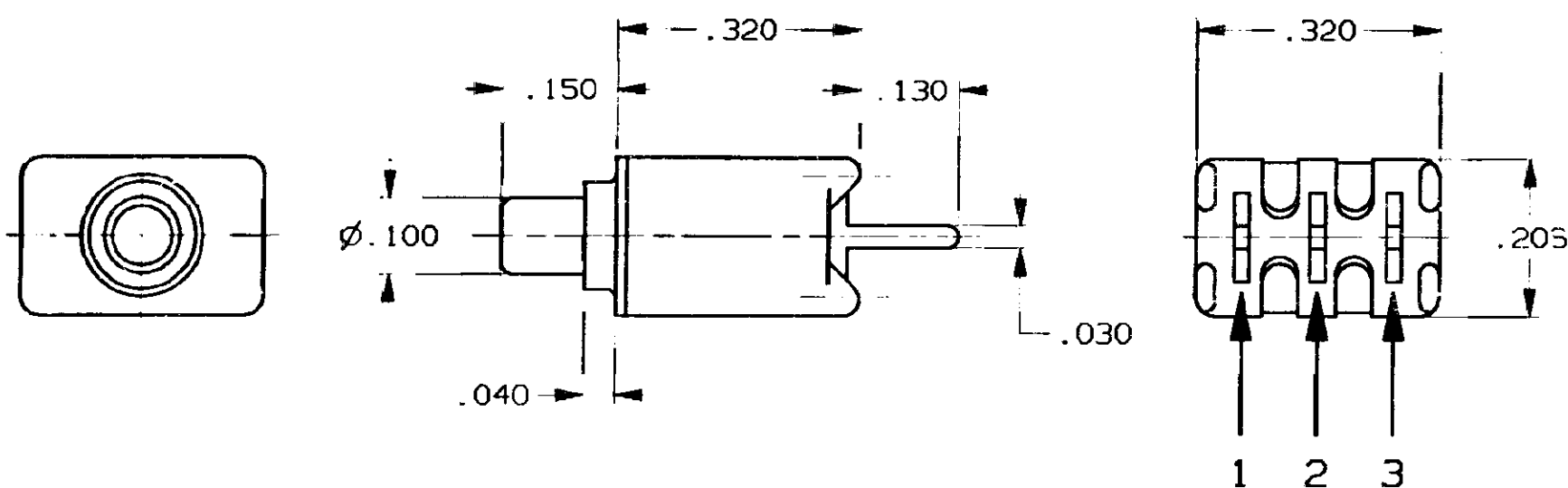
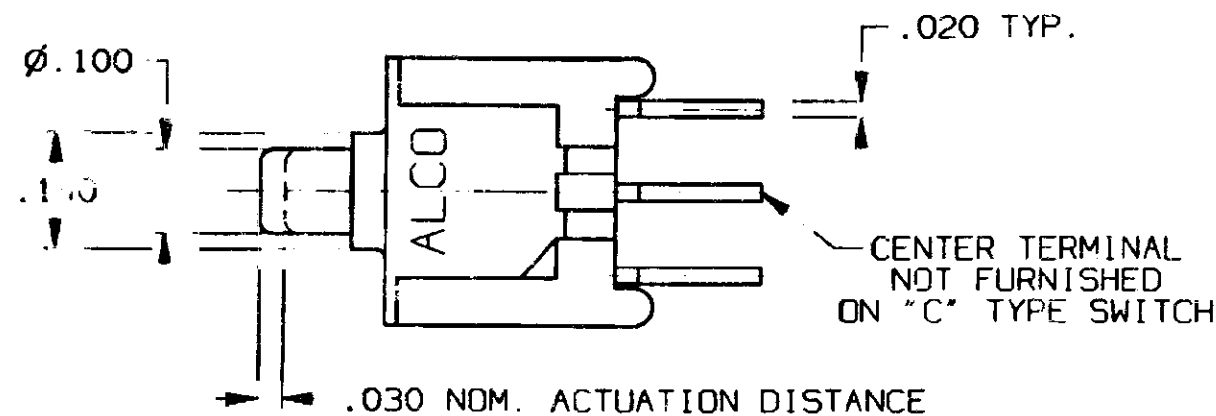


CONVERSION CHART	
INCH	MM
.002	0.05
.010	0.25
.020	0.50
.030	0.76
.040	1.01
.043	1.09
.100	2.54
.110	2.79
.130	3.30
.140	3.55
.150	3.81
.206	5.23
.320	8.12



**RECOMMENDED HOLE LAYOUT**  
TOLERANCE  $\pm .002$  UNLESS OTHERWISE NOTED

OPTIONS	
[**]	BUTTON COLOR
[0]	BLACK
[2]	RED
[9]	WHITE

#### SPECIFICATIONS:

**MATERIALS:**  
CASE: HIGH TEMPERATURE POLYESTER, UL94V-0.  
ACTUATOR BUTTON: POLYAMIDE. (SEE OPTIONS CHART).  
TERMINALS: COPPER ALLOY, TIN/LEAD PLATE.  
TERMINAL SEAL: SP EPOXY.  
MOVING CONTACT: COPPER ALLOY, GOLD PLATE.  
FIXED CONTACTS: COPPER ALLOY, GOLD PLATE.

**ELECTRICAL:**  
CONTACT RATING, GOLD: 0.4 VA MAX. @ 20VDC OR PEAK AC.  
INITIAL CONTACT RESISTANCE: 20 MILLIOHMS MAX.  
INSULATION RESISTANCE: 1,000 MEGOHMS @ 500 VDC MIN.  
DIELECTRIC STRENGTH: 1000 VOLTS RMS @ SEA LEVEL.  
LIFE EXPECTANCY: 60,000 CYCLES.

**MECHANICAL:**  
ACTUATION FORCE: 50 TO 400 GRAMS.  
ACTUATION TRAVEL: .030 IN. APPROX.

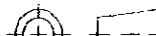

**ENVIRONMENTAL:**  
OPERATING TEMPERATURE:  $-22^{\circ}\text{F}$  TO  $+149^{\circ}\text{F}$  ( $-30^{\circ}\text{C}$  TO  $+65^{\circ}\text{C}$ ).  
STORAGE TEMPERATURE:  $-22^{\circ}\text{F}$  TO  $+149^{\circ}\text{F}$  ( $-30^{\circ}\text{C}$  TO  $+65^{\circ}\text{C}$ ).

**NOTES:** UNLESS OTHERWISE SPECIFIED  
1. INTERPRET DRAWING PER ANSI Y14.5M 1982.

CIRCUIT CONNECTIONS		
SWITCH (*) MODEL NO	FLAT ALCO 1 2 3	FLAT ALCO 1 2 3
TPA11(C)G-PC	OFF	3-1 (MOM)
TPA11(F)G-PC	2-1	2-3 (MOM)
<b>NOTES:</b> TERMINALS CONNECTED WHEN BUTTON IS IN POSITIONS SHOWN. TERMINAL DESIGNATION NUMBERS ARE FOR REFERENCE ONLY, AND DO NOT APPEAR ON SWITCHES.		

#### CUSTOMER DRAWING

SPECIFICATIONS ARE SUBJECT TO CHANGES WITHOUT NOTICE

	THIRD ANGLE PROJECTION	UNLESS OTHERWISE SPECIFIED DIMENSIONS ARE IN MILLI- METERS. DO NOT SCALE PRINT		ORIGINAL DATE OF DRAWING: 9-23-96			
TOLERANCES (EXCEPT AS NOTED) ANGULAR = ±1° DECIMAL .XXX = ±.010				DRAWN: C. THEODORE	DATE: 9-23-96	TITLE: CUSTOMER DRAWING PUSHBUTTON SWITCH, (TPA11(*)G-PC[**])	
<b>TYCO CONFIDENTIAL</b> This document contains information which is the exclusive property of <b>TYCO ELECTRONICS</b> . Distribution, reproduction or use by others is not permitted without the expressed written consent of Augat Inc.		MATERIAL:  SEE SPECIFICATIONS		APPROVED:	DATE:	DWG. NO. 2-1437571-5	REV. A
		FINISH:  SEE SPECIFICATIONS		CODE IDENT. NO. 9150E	DWG. SIZE C	PRODUCT CODE:	
				NEXT ASSY:	SCALE: SHEET 1 OF 1		

AUGAT D/N 40102

THIS IS A C.A.D. GENERATED DRAWING.  
DO NOT MAKE MANUAL REVISIONS TO MASTER.



# Mouser Electronics

Authorized Distributor

Click to View Pricing, Inventory, Delivery & Lifecycle Information:

[TE Connectivity:](#)

[TPA11FGPC6](#)