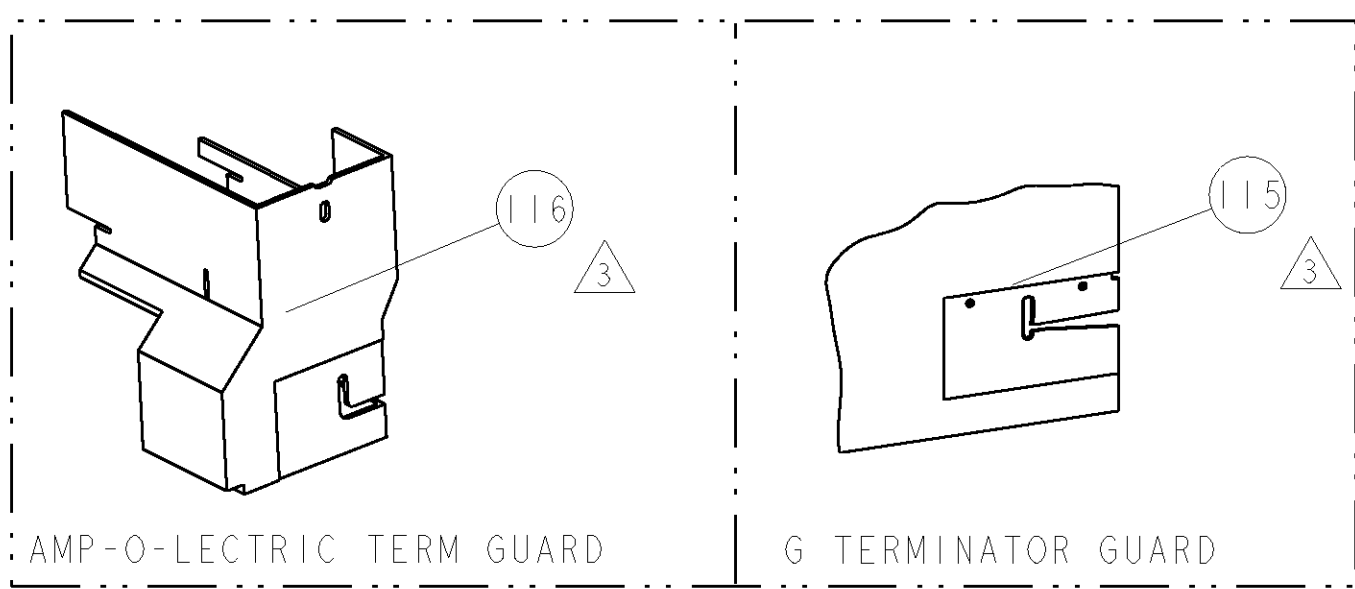



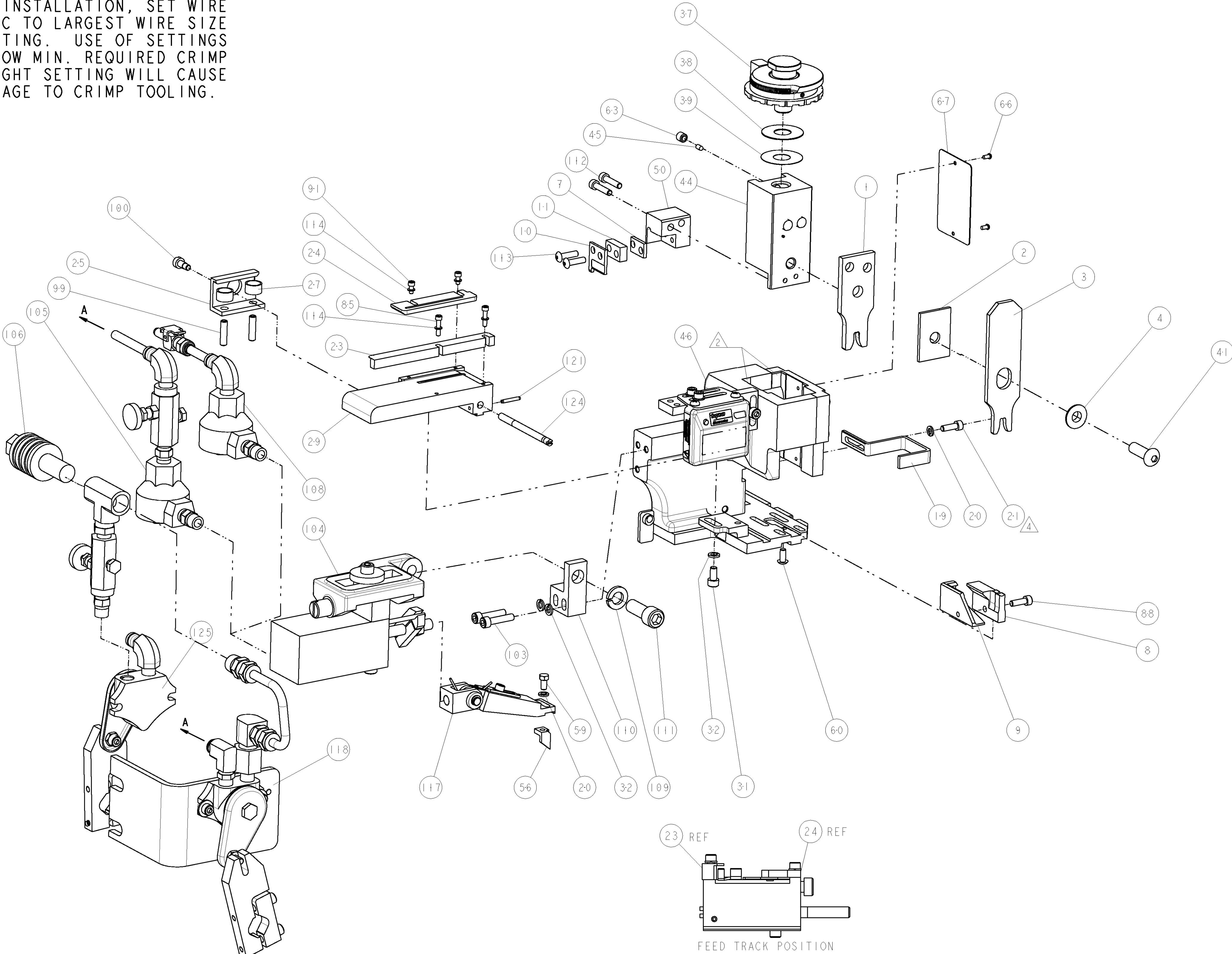
8			7		
THIS DRAWING IS UNPUBLISHED.			RELEASED FOR PUBLICATION		
(C) COPYRIGHT 20			20		
BY TYCO ELECTRONICS CORPORATION. ALL RIGHTS RESERVED.					
PART NUMBER	REV	FIRST USED	POWER UNIT	FEED TYPE	DESCRIPTION
1855244-1	A	122500-1	LEADMAKER	AIR FEED	CUTS CARRIER
1855244-2	A	565435-5	BENCH MODEL K	AIR FEED	CUTS CARRIER
1855244-3	A	354500-1	BENCH MODEL G	AIR FEED	CUTS CARRIER
7-1855244-7	A	-	-	-	SPARE PARTS

- △ RECOMMENDED SPARE PARTS
- △ GREASE LIGHTLY
- △ GUARD MUST BE IN PLACE WHEN OPERATING APPLICATOR IN A BENCH MACHINE
- △ INSTALL ITEMS 102 & 119 ON SIDE OF STRIPPER ON APPL HOUSING USING ITEM 21.

*** WARNING**
ON INSTALLATION, SET WIRE DISC TO LARGEST WIRE SIZE SETTING. USE OF SETTINGS BELOW MIN. REQUIRED CRIMP HEIGHT SETTING WILL CAUSE DAMAGE TO CRIMP TOOLING.




TERMINAL NAME: MEDIUM RING TERMINAL							
TYCO PN	MANUF PN	PACKARD TERM - PACKARD CRIMP SPECS					
1949211-1	12103506						
1949236-1	12162099						
-	-	CRIMP HEIGHT		WIRE SIZE		REF SETTING	
-	-	2.60±0.05mm[.102±.002]		3mm2		B9	
-	-	2.45±0.05mm[.097±.002]		2mm2		C6	
-	-			-		-	
-	-			-		-	
-	-	CRIMP	SIZE	TYPE	RANGE		
-	-						
-	-	WIRE	4.19mm [.165]	F	2.00-3.00 mm2		
-	-	INSUL	5.00mm [.197]	F	Ø3.7 mm MAX		
WIRE STRIP LENGTH 8.1mm	TERM APPL SPEC NONE	FEED 19.86mm	APPLICATOR INSTRUCTIONS 408-8040		SET UP GAGE 458637-1		



LOC		DIST		REVISONS			
A		66		P	LTR	DESCRIPTION	DATE
				A		RELEASED	24APR2007
							BH
							BH

	-	-	1	-	-	455350-4	AIR BLAST ASS'Y	125
	-	1	1	1	-	690432-3	ADJUSTMENT SCREW	124
	-	1	1	1	-	3-21028-8	PIN, SLOTTED SPRING .094 X .625	121
4	-	18	24	18	IN	27319-4	TUBING, POLY-FLO, NATURAL	119
	-	-	1	-	-	692655-6	AIR FEED VALVE ASSEMBLY	118
	-	1	1	1	-	461062-1	FEED FINGER ASSEMBLY	117
3	-	-	REF	-	..	455749-1	GUARD WINDOW	116
3	-	REF	-	-	..	679532-1	INSERT, GUARD	115
	-	4	4	4	-	21024-2	WASHER, SPRG LOCK, REG NO 4	114
	-	2	2	2	-	2-21002-3	SCR, BTN SKT HD CAP 8-32 X .625	113
	-	2	2	2	-	2-21000-9	SCR, SKT HD CAP 8-32 X .750	112
	-	1	1	1	-	3-21001-5	SCR, SKT HD CAP 3/8-16 X 1.000	111
	-	1	1	1	-	459610-1	MOUNT, FEED BRACKET	110
	-	1	1	1	-	21024-8	WASHER, SPRG LOCK, REG 3/8	109
	-	1	-	1	-	692655-7	AIR FEED VALVE ASSEMBLY	108
	-	-	1	-	-	24042-2	VALVE, SLEEVE, 3-WAY	106
	-	-	1	-	-	692655-5	AIR FEED VALVE ASSEMBLY	105
	-	1	1	1	-	461065-1	ASSEMBLY, AIR FEED	104
	-	2	2	2	-	3-21000-8	SCR, SKT HD CAP 10-32 X .875	103
4	-	1	1	1	-	986220-1	CLAMP, CABLE, BLACK	102
	-	1	-	1	-	23238-1	INSERT, COUPLING	101
	-	1	1	1	-	22353-8	SCR, SHLD, SLOT HD, 3/16 DIA	100
	-	2	2	2	-	5-21006-6	SCR, SET, CUP POINT 10-32 X .750	99
	-	2	2	2	-	1-21000-3	SCR, SKT HD CAP 4-40 X .250	91
	-	1	1	1	-	2-21000-7	SCR, SKT HD CAP 8-32 X .500	88
	-	2	2	2	-	1-21000-5	SCR, SKT HD CAP 4-40 X .500	85
	-	1	1	1	-	4088040	SF APPL INST 408-8040	72
	-	1	1	1	-	217238-1	GENERAL INSTRUCTION PKG	71
	-	1	1	1	-	461264-5	PLATE, IDENTIFICATION	67
	-	2	2	2	-	21017-2	SCREW, DRIVE	66
	-	1	1	1	-	21009-2	SCR, SET, SELF LOCKING 1/4-20 X .250	63
	-	1	1	1	-	22733-8	SCR, BHSC, SELF-LOCKING, 8-32 X .375	60
	-	1	1	1	-	2-22603-0	SCR, HEX HD CAP 8-32 X .312	59
	-	1	1	1	-	2-694433-8	FEED PAWL	56
	-	1	1	1	-	1633513-2	HOLDER, SLUG BLADE	50
	-	1	1	1	-	1633399-1	APPL., BASIC AIR FEED SUB ASSY	46
	-	1	1	1	-	690191-1	PLUG,NYLON	45
	-	1	1	1	-	455673-6	RAM, SIDE FEED	44
	-	1	1	1	-	7-21002-9	SCR, BTN SKT HD CAP 5/16-24 X 1.00	41
	-	1	1	1	-	690125-1	SHIM SUB-ASSY	39
	-	1	1	1	-	1-469367-2	SHIM	38
	-	1	1	1	-	879103-3	FINE ADJUST HEAD ASSEMBLY	37
	-	3	3	3	-	21024-5	WASHER, SPRG LOCK, REG NO 10	32
	-	1	1	1	-	3-21000-4	SCR, SKT HD CAP 10-32 X .375	31
	-	1	1	1	-	3-844048-1	PLATE, REAR STRIP GUIDE	29
	-	2	2	2	-	22284-1	SPRING, COMPRESSION	27
	-	1	1	1	-	356835-1	LEVER, DRAG RELEASE	26
	-	1	1	1	-	240792-1	DRAG, TERMINAL	25
	-	1	1	1	-	1633497-2	REAR STRIP GUIDE	24
	-	1	1	1	-	2-189124-1	GUIDE, FRONT STRIP	23
	-	1	1	1	-	2-21000-7	SCR, SKT HD CAP 8-32 X .500	21
	-	2	2	2	-	21024-4	WASHER, SPRG LOCK, REG NO 8	20
	-	1	1	1	-	1-458230-8	STRIPPER	19
	-	1	1	1	-	8-240641-8	SPACER	11
△	-	1	1	1	-	1633512-3	BLADE, SLUG	10
△	-	1	1	1	-	1-1633124-0	PLATE, REAR SHEAR	9
△	1	1	1	1	-	1633507-7	ANVIL, SPECIAL, COMBINATION	8
	-	1	1	1	-	8-240641-6	SPACER	7
	-	1	1	1	-	1-238009-1	BLOCK, FL CRIMPER SPACER	4
△	1	1	1	1	-	4-1633471-4	CRIMPER, INSULATION F	3
	-	1	1	1	-	2-455888-1	SPACER, CRIMPER	2
△	1	1	1	1	-	6-1673600-9	CRIMPER, WIRE	1

THIS DRAWING IS UNPUBLISHED. IT IS THE PROPERTY OF TYCO ELECTRONICS CORPORATION. IT IS TO BE USED FOR THE PURPOSES SPECIFIED IN THE ORDER. IT IS TO BE RETURNED TO TYCO ELECTRONICS CORPORATION WHEN NO LONGER REQUIRED. NO PARTS OR INFORMATION ARE TO BE RELEASED TO THE PUBLIC WITHOUT THE WRITTEN PERMISSION OF TYCO ELECTRONICS CORPORATION.										DWN B. HIGMAN 23MAR2007		tyco <i>Electronics</i>		Tyco Electronics Harrisburg, PA 17105-3608	
										CHK B. HIGMAN 23MAR2007					
DIMENSIONS: INCHES		TOLERANCES UNLESS OTHERWISE SPECIFIED:								APVD T. BENCHOFF 23MAR2007		NAME		FINE ADJUST SIDE FEED HDM APPLICATOR - APPLICATION SPEC	
		0 PLC ±.001 1 PLC ±0.1 2 PLC ±0.01 3 PLC ±0.001 4 PLC ±0.0001 5 PLCS ±.001								PRODUCT SPEC					
MATERIAL		FINISH		WEIGHT		SIZE		CASE CODE		DRAWING NO		RESTRICTED TO			
-		-		-		A		100779		C=1855244		-			
CUSTOMER DRAWING						SCALE		3:5		SHEET		1 OF 1 REV A			

Mouser Electronics

Authorized Distributor

Click to View Pricing, Inventory, Delivery & Lifecycle Information:

[TE Connectivity:](#)

[1855244-1](#)