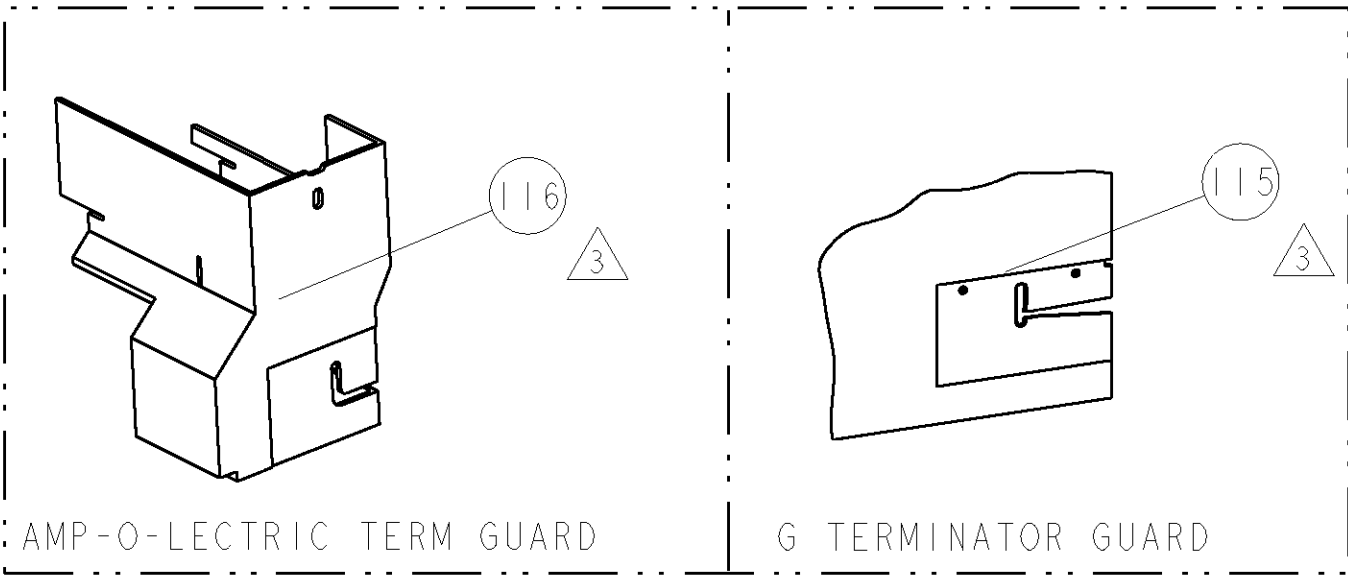


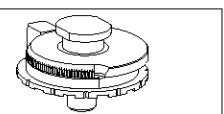
8				7			
THIS DRAWING IS UNPUBLISHED.				RELEASED FOR PUBLICATION			
COPYRIGHT 20				BY TYCO ELECTRONICS CORPORATION. ALL RIGHTS RESERVED.			
PART NUMBER		REV	FIRST USED	POWER UNIT	FEED TYPE	DESCRIPTION	
1855191-1		A	122500-1	LEADMAKER	POST FEED	CUTS CARRIER	
1855191-2		A	565435-5	BENCH MODEL K	PRE FEED	CUTS CARRIER	
1855191-3		A	354500-1	BENCH MODEL G	PRE FEED	CUTS CARRIER	
1855191-6		A	122500-1	LEADMAKER	POST FEED	CONTINUOUS CARRIER	
7-1855191-7		A	-	-	-	SPARE PARTS	

- △ RECOMMENDED SPARE PARTS
- △ GREASE LIGHTLY
- △ GUARD MUST BE IN PLACE WHEN OPERATING APPLICATOR IN A BENCH MACHINE

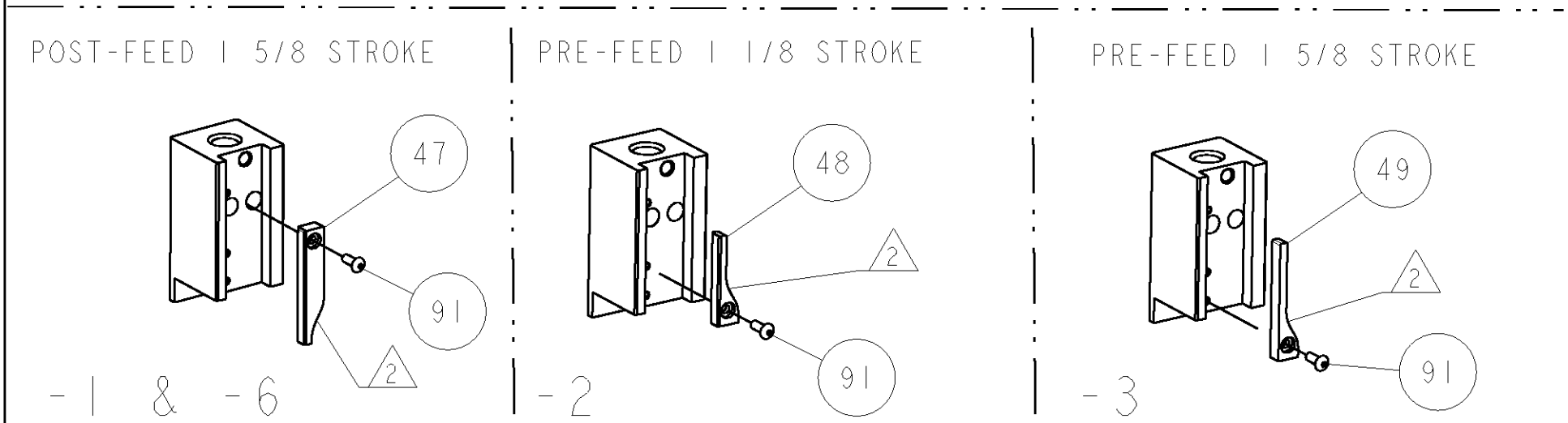
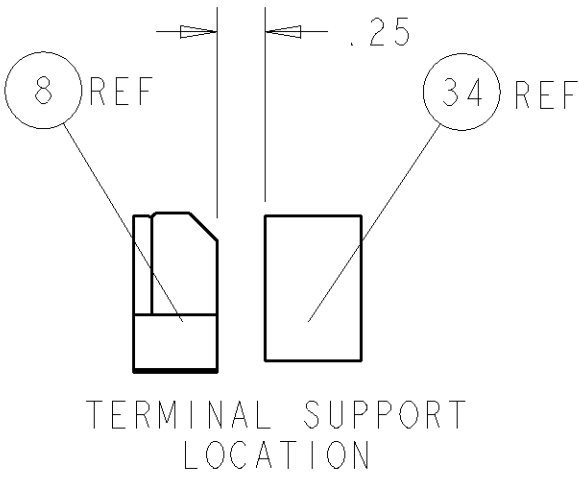
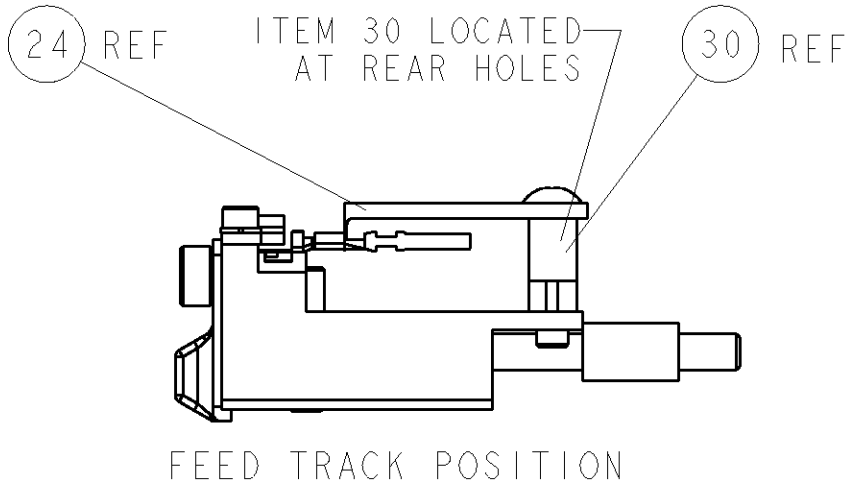
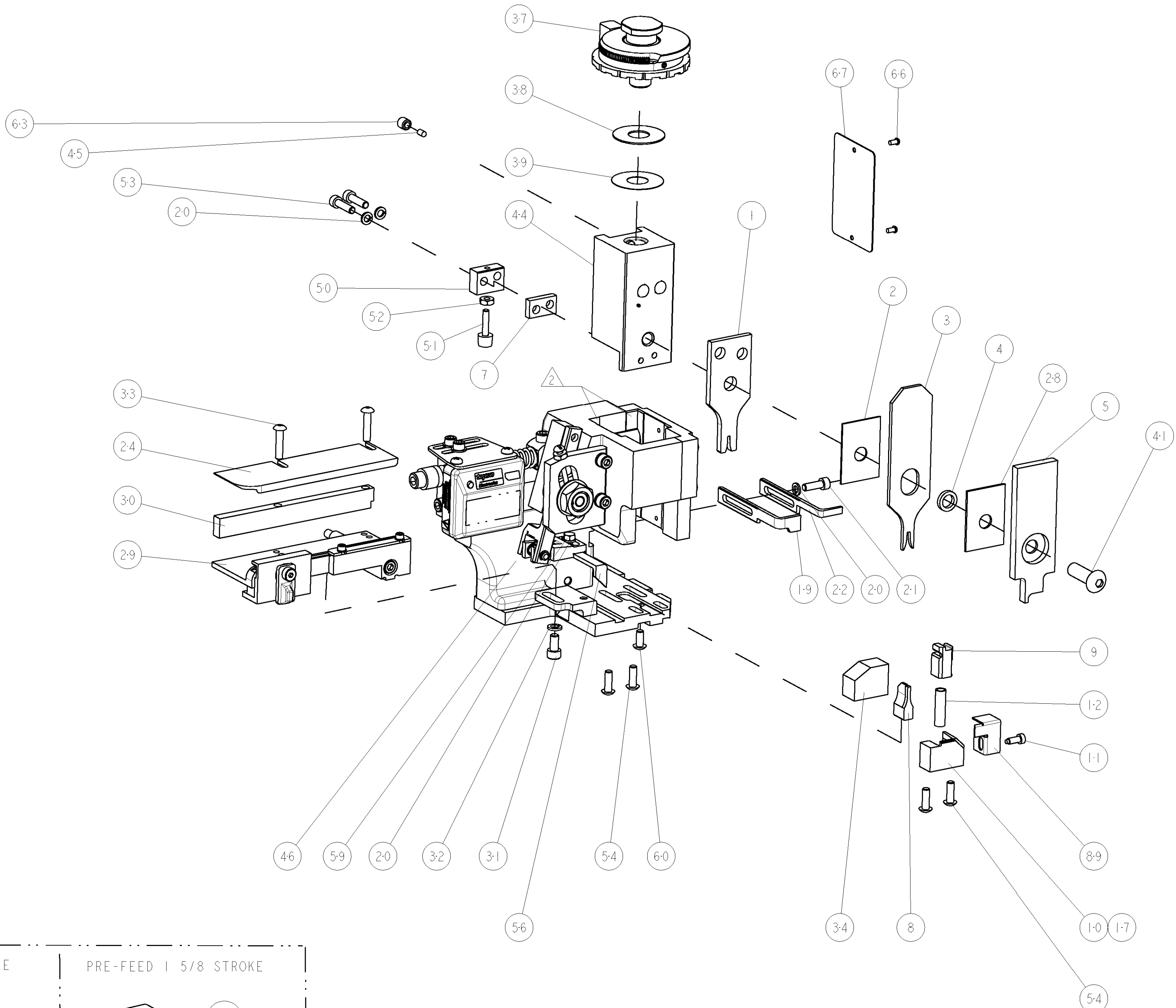
**\* WARNING**  
ON INSTALLATION, SET WIRE DISC TO LARGEST WIRE SIZE SETTING. USE OF SETTINGS BELOW MIN. REQUIRED CRIMP HEIGHT SETTING WILL CAUSE DAMAGE TO CRIMP TOOLING.




TERMINAL NAME: TAXI ASM TERM F MIC/P 100					
TYCO PN	PACKARD PN	PACKARD TERMINAL - PACKARD CRIMP SPECS			
1572244	12084913				
-	-	CRIMP HEIGHT		WIRE SIZE	REF SETTING
-	-	1.10±0.05mm [ .043±.002]		0.5mm2	C0
-	-	1.00±0.05mm [ .039±.002]		0.35mm2	C7
-	-	-		-	-
-	-	-		-	-
-	-	CRIMP	SIZE	TYPE	RANGE
-	-	WIRE	1.40mm [ .055]	F	0.35-0.50mm2
-	-	INSUL	2.18mm [ .086]	F	Ø 1.94-2.00mm
WIRE STRIP LENGTH 4.62-5.10mm		TERM APPL SPEC NONE	FEED 7.92mm	APPLICATOR INSTRUCTIONS 408-8040	SET UP GAGE 458637-1



LOC		DIST		REVISONS			
A		66		P	LTR	DESCRIPTION	DATE
				A		RELEASED	05MAR2007
							LG
							GB



3	-	-	-	REF	-	..	455749-1	GUARD WINDOW	116
	-	-	REF	-	-	..	679532-1	INSERT, GUARD	115
	-	1	1	1	1	-	1-21002-7	SCR, BTN SKT HD CAP 6-32 X .375	91
	-	1	1	1	1	-	318563-1	GUARD, FRONT CHIP	89
	-	1	1	1	1	-	4088040	SF APPL INST 408-8040	72
	-	1	1	1	1	-	217238-1	GENERAL INSTRUCTION PKG	71
	-	1	1	1	1	-	461264-5	PLATE, IDENTIFICATION	67
	-	2	2	2	2	-	21017-2	SCREW, DRIVE	66
	-	1	1	1	1	-	21009-2	SCR, SET, SELF LOCKING 1/4-20 X .250	63
	-	1	1	1	1	-	22733-8	SCR, BHSC, SELF-LOCKING, 8-32 X .375	60
	-	1	1	1	1	-	2-22603-0	SCR, HEX HD CAP 8-32 X .312	59
	-	1	1	1	1	-	458537-2	PAWL, FEED	56
	-	4	4	4	4	-	2-21002-2	SCR, BTN SKT HD CAP 8-32 X .500	54
	-	2	2	2	2	-	2-21000-8	SCR, SKT HD CAP 8-32 X .625	53
	-	1	1	1	1	-	21018-5	NUT, HEX, REG 6-32	52
	-	1	1	1	1	-	811242-2	BUMPER, HOLD DOWN	51
	-	1	1	1	1	-	690753-1	SPACER, TONKER	50
	-	-	1	-	-	..	690602-6	CAM, PRE FEED, 1 5/8	49
	-	-	-	1	-	..	690602-5	CAM, PRE FEED, 1 1/8	48
	-	1	-	-	1	-	690501-4	CAM, POST FEED, 1 5/8	47
	-	1	1	1	1	-	459456-1	APPL. BASIC SUB ASSY (SIDE WISE MQCA)	46
	-	1	1	1	1	-	690191-1	PLUG,NYLON	45
	-	1	1	1	1	-	455673-1	RAM, SIDE FEED	44
	-	1	1	1	1	-	7-21002-9	SCR, BTN SKT HD CAP 5/16-24 X 1.00	41
	-	1	1	1	1	-	690125-1	SHIM SUB-ASSY	39
	-	1	1	1	1	-	469367-8	SHIM	38
	-	1	1	1	1	-	879103-3	FINE ADJUST HEAD ASSEMBLY	37
	-	1	1	1	1	-	3-690786-3	TERMINAL SUPPORT	34
	-	2	2	2	2	-	2-21002-4	SCR, BTN SKT HD CAP 8-32 X .750	33
	-	1	1	1	1	-	21024-5	WASHER, SPRG LOCK, REG NO 10	32
	-	1	1	1	1	-	3-21000-4	SCR, SKT HD CAP 10-32 X .375	31
	-	1	1	1	1	-	1-1320908-5	SPACER, STRIP GUIDE	30
	-	1	1	1	1	-	1633091-3	ASSEMBLY, STRIP GUIDE	29
	-	1	1	1	1	-	1-455888-0	SPACER, CRIMPER	28
	-	1	1	1	1	-	1320928-1	PLATE, STRIP GUIDE	24
	-	1	-	-	1	-	690472-2	STRIPPER	22
	-	1	1	1	1	-	2-21000-7	SCR, SKT HD CAP 8-32 X .500	21
	-	4	4	4	4	-	21024-4	WASHER, SPRG LOCK, REG NO 8	20
	-	-	1	1	1	-	691353-1	STRIPPER	19
△	-	1	-	-	-	-	679625-1	SHEAR HOLDER, FRONT (NO CUT)	17
	-	1	1	1	1	-	3-22280-3	SPRING, COMPRESSION	12
	-	1	1	1	1	-	690461-1	STOP, SHEAR	11
△	-	-	1	1	1	-	690459-1	SHEAR HOLDER, FRONT	10
△	-	1	1	1	1	-	454276-1	FLOATING SHEAR, FRONT	9
△	1	1	1	1	1	-	2-662183-8	ANVIL, COMBINATION	8
	-	1	1	1	1	-	6-240641-9	SPACER	7
	-	1	1	1	1	-	1-455889-4	DEPRESSOR, SHEAR	5
	-	1	1	1	1	-	1-238011-0	BLOCK, CRIMPER SPACER	4
△	1	1	1	1	1	-	8-1424909-4	CRIMPER, INSULATION F	3
	-	1	1	1	1	-	455888-7	SPACER, CRIMPER	2
△	1	1	1	1	1	-	5-456402-8	CRIMPER, WIRE PREMIUM	1
	-77	-6	-3	-2	-1	U/M	PART NO	DESCRIPTION	ITEM NO

THIS DRAWING IS A PROPRIETARY DOCUMENT FOR TYCO ELECTRONICS CORPORATION. IT IS TO BE USED FOR THE EXCLUSIVE USE OF THE CUSTOMER AND IS NOT TO BE REPRODUCED OR TRANSMITTED IN ANY FORM OR BY ANY MEANS, ELECTRONIC OR MECHANICAL, WITHOUT THE WRITTEN PERMISSION OF TYCO ELECTRONICS CORPORATION. NO PARTS OR MATERIALS ARE TO BE USED IN THE CONSTRUCTION OF THE CUSTOMER'S PRODUCT WITHOUT THE WRITTEN PERMISSION OF TYCO ELECTRONICS CORPORATION.		DWN L. GROSS	19FEB2007	tyco Electronics Tyco Electronics Harrisburg, PA 17105-3608			
		CHK G. BAILEY	19FEB2007			NAME T. BENCHOFF	
		APVD T. BENCHOFF	19FEB2007				
DIMENSIONS: INCHES		TOLERANCES UNLESS OTHERWISE SPECIFIED:		FINE ADJUST SIDE FEED HDM APPLICATOR -			
		1 PLC ±.01 2 PLC ±.01 3 PLC ±.01 4 PLC ±.01 5 PLC ±.01 ANGLES		PRODUCT SPEC - APPLICATION SPEC -			
MATERIAL	-	FINISH	-	SIZE	CAGE CODE	DRAWING NO	RESTRICTED TO
	-		-	A	00779	C=1855191	-
CUSTOMER DRAWING				SCALE 3:5 SHEET 1 OF 1 REV A			

# Mouser Electronics

Authorized Distributor

Click to View Pricing, Inventory, Delivery & Lifecycle Information:

[TE Connectivity:](#)

[1855191-2](#)