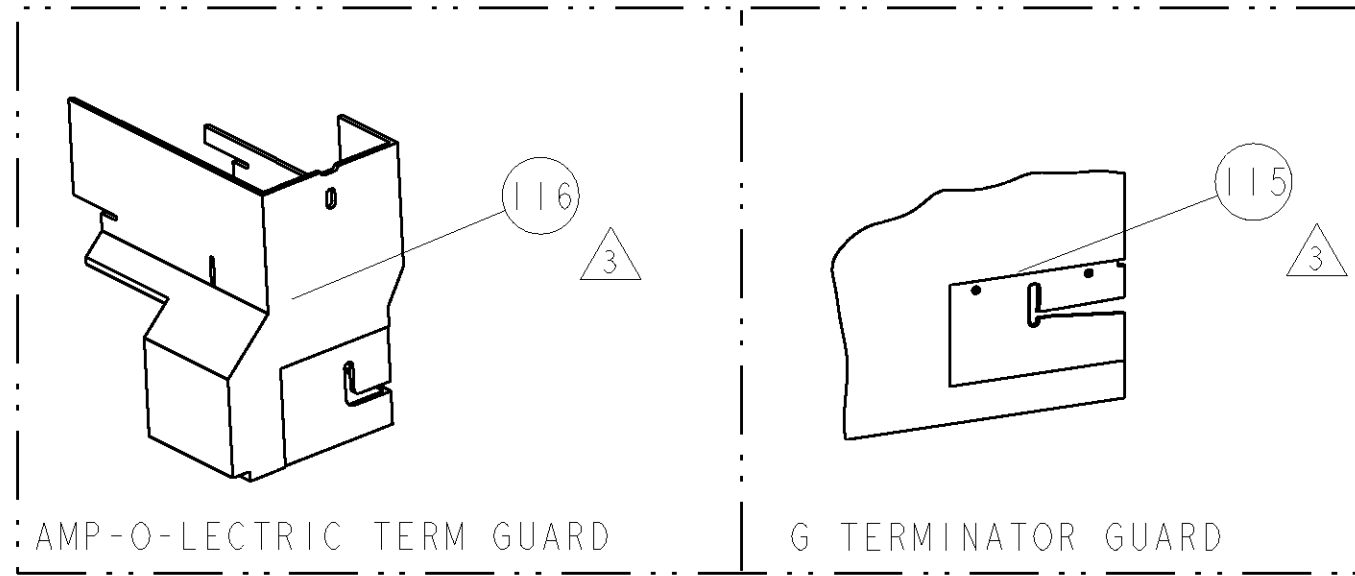
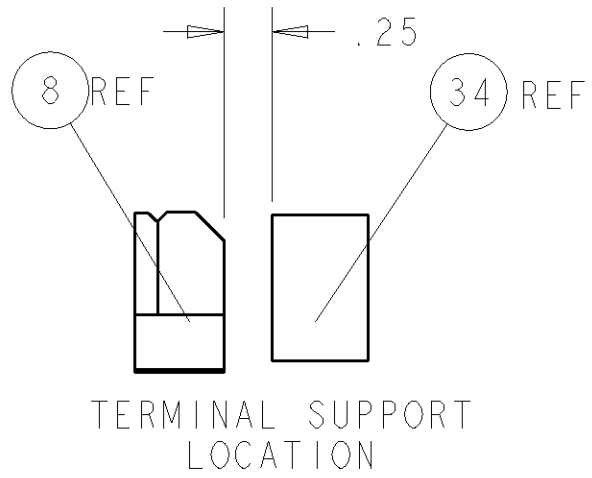
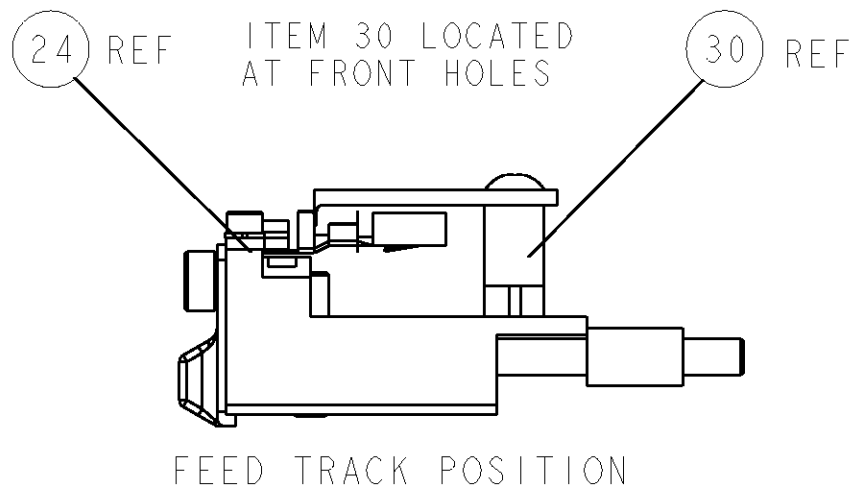


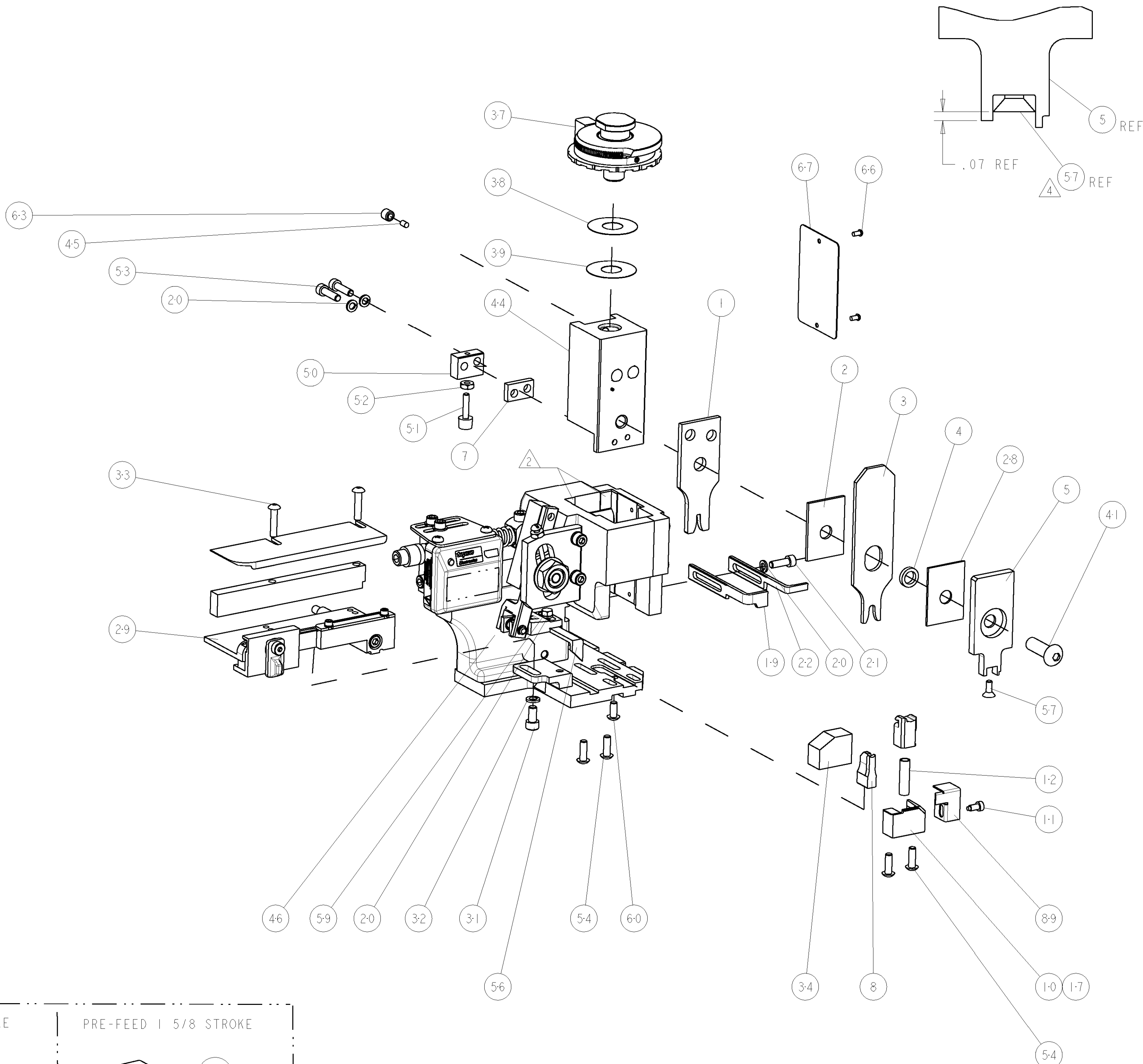
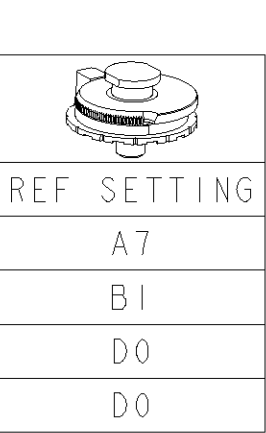
8			7		
THIS DRAWING IS UNPUBLISHED.			RELEASED FOR PUBLICATION		
20			20		
(C) COPYRIGHT 20			BY TYCO ELECTRONICS CORPORATION. ALL RIGHTS RESERVED.		
PART NUMBER	REV	FIRST USED	POWER UNIT	FEED TYPE	DESCRIPTION
1855171-1	A	122500-1	LEADMAKER	POST FEED	CUTS CARRIER
1855171-2	A	565435-5	BENCH MODEL K	PRE FEED	CUTS CARRIER
1855171-3	A	354500-1	BENCH MODEL G	PRE FEED	CUTS CARRIER
1855171-6	A	122500-1	LEADMAKER	POST FEED	CONTINUOUS CARRIER
7-1855171-7	A	-	-	-	SPARE PARTS

- △ RECOMMENDED SPARE PARTS
- △ GREASE LIGHTLY
- △ GUARD MUST BE IN PLACE WHEN OPERATING APPLICATOR IN A BENCH MACHINE
- △ APPLY TORQ-SEAL IN ALLEN SOCKET TO FILL HOLE AFTER FLAT HD HAS BEEN ADJUSTED TO CORRECT HEIGHT AT QUALIFICATION. APPLY PN 1-23419-5 LOC-TITE TO THREADS.

**\* WARNING**  
ON INSTALLATION, SET WIRE DISC TO LARGEST WIRE SIZE SETTING. USE OF SETTINGS BELOW MIN. REQUIRED CRIMP HEIGHT SETTING WILL CAUSE DAMAGE TO CRIMP TOOLING.



TERMINAL NAME: SOCKET CONTACT					
TYCO PN	PACKARD PN	PACKARD TERMINAL - PACKARD CRIMP SPECS			
286650-1	12077411				
-	-	CRIMP HEIGHT	WIRE SIZE	REF SETTING	
-	-	1.60±0.05mm [.063±.002]	16AWG or 1.25mm2	A7	
-	-	1.55±0.05mm [.061±.002]	1mm2	B1	
-	-	1.30±0.05mm [.051±.002]	18AWG or 0.8mm2	D0	
-	-	1.30±0.05mm [.051±.002]	20AWG or 0.5mm2	D0	
SEAL PN.	-	CRIMP	SIZE	TYPE	RANGE
1572757-1	12015323	WIRE	2.41mm [.095]	F	1.25mm-0.5mm
-	-	INSUL	4.39mm [.173]	O	Ø 2mm-3.12mm
WIRE STRIP LENGTH	TERM APPL SPEC	FEED	APPLICATOR INSTRUCTIONS		SET UP GAGE
5.15mm-5.6mm	NONE	14.55mm	408-8040		458637-1



△	-	-	-	REF	-	..	455749-1	GUARD WINDOW	116
△	-	-	REF	-	-	..	679532-1	INSERT, GUARD	115
-	-	-	-	-	-	-	1-21002-7	SCR, BTN SKT HD CAP 6-32 X .375	91
-	-	-	-	-	-	-	318563-1	GUARD, FRONT CHIP	89
-	-	-	-	-	-	-	4088040	SF APPL INST 408-8040	72
-	-	-	-	-	-	-	217238-1	GENERAL INSTRUCTION PKG	71
-	-	-	-	-	-	-	461264-5	PLATE, IDENTIFICATION	67
-	-	-	-	-	-	-	21017-2	SCREW, DRIVE	66
-	-	-	-	-	-	-	21009-2	SCR, SET, SELF LOCKING 1/4-20 X .250	63
-	-	-	-	-	-	-	22733-8	SCR, BHSC, SELF-LOCKING, 8-32 X .375	60
-	-	-	-	-	-	-	2-22603-0	SCR, HEX HD CAP 8-32 X .312	59
-	-	-	-	-	-	-	1-21003-9	SCR, FLT SKT HD CAP 6-32 X .375	57
-	-	-	-	-	-	-	458537-2	PAWL, FEED	56
-	-	-	-	-	-	-	2-21002-2	SCR, BTN SKT HD CAP 8-32 X .500	54
-	-	-	-	-	-	-	2-21000-8	SCR, SKT HD CAP 8-32 X .625	53
-	-	-	-	-	-	-	21018-5	NUT, HEX, REG 6-32	52
-	-	-	-	-	-	-	811242-2	BUMPER, HOLD DOWN	51
-	-	-	-	-	-	-	690753-1	SPACER, TONKER	50
-	-	-	-	-	-	-	690602-6	CAM, PRE FEED, 1 5/8	49
-	-	-	-	-	-	-	690602-5	CAM, PRE FEED, 1 1/8	48
-	-	-	-	-	-	-	690501-4	CAM, POST FEED, 1 5/8	47
-	-	-	-	-	-	-	459456-1	APPL. BASIC SUB ASSY (SIDE WISE MQCA)	46
-	-	-	-	-	-	-	690191-1	PLUG,NYLON	45
-	-	-	-	-	-	-	455673-1	RAM, SIDE FEED	44
-	-	-	-	-	-	-	7-21002-9	SCR, BTN SKT HD CAP 5/16-24 X 1.00	41
-	-	-	-	-	-	-	690125-1	SHIM SUB-ASSY	39
-	-	-	-	-	-	-	469367-1	SHIM	38
-	-	-	-	-	-	-	879103-2	FINE ADJUST HEAD ASSEMBLY	37
-	-	-	-	-	-	-	690786-3	TERMINAL SUPPORT	34
-	-	-	-	-	-	-	2-21002-4	SCR, BTN SKT HD CAP 8-32 X .750	33
-	-	-	-	-	-	-	21024-5	WASHER, SPRG LOCK, REG NO 10	32
-	-	-	-	-	-	-	3-21000-4	SCR, SKT HD CAP 10-32 X .375	31
-	-	-	-	-	-	-	1-1320908-0	SPACER, STRIP GUIDE	30
-	-	-	-	-	-	-	1633091-1	ASSEMBLY, STRIP GUIDE	29
-	-	-	-	-	-	-	1-455888-0	SPACER, CRIMPER	28
-	-	-	-	-	-	-	1320928-1	PLATE, STRIP GUIDE	24
-	-	-	-	-	-	-	690472-2	STRIPPER	22
-	-	-	-	-	-	-	2-21000-7	SCR, SKT HD CAP 8-32 X .500	21
-	-	-	-	-	-	-	21024-4	WASHER, SPRG LOCK, REG NO 8	20
-	-	-	-	-	-	-	691353-1	STRIPPER	19
-	-	-	-	-	-	-	679625-2	SHEAR HOLDER, FRONT (NO CUT)	17
-	-	-	-	-	-	-	3-22280-3	SPRING, COMPRESSION	12
-	-	-	-	-	-	-	690461-2	STOP, SHEAR	11
-	-	-	-	-	-	-	1-690459-0	SHEAR HOLDER, FRONT	10
-	-	-	-	-	-	-	318707-1	FLOATING SHEAR, FRONT	9
-	-	-	-	-	-	-	1633381-9	ANVIL, COMBINATION	8
-	-	-	-	-	-	-	2-240641-4	SPACER	7
-	-	-	-	-	-	-	318701-1	DEPRESSOR, SHEAR	5
-	-	-	-	-	-	-	238011-4	BLOCK, CRIMPER SPACER	4
-	-	-	-	-	-	-	5-1583690-3	CRIMPER, INSUL O	3
-	-	-	-	-	-	-	1-455888-6	SPACER, CRIMPER	2
-	-	-	-	-	-	-	5-1673600-6	CRIMPER, WIRE	1
-	-	-	-	-	-	-	-77 -6 -3 -2 -1 U/M	PART NO	ITEM NO

THIS DRAWING IS A CONTROLLED DOCUMENT FOR TYCO ELECTRONICS CORPORATION IT IS TO BE USED FOR THE PURPOSES SPECIFIED IN THE ORDER. IT IS TO BE RETURNED TO TYCO ELECTRONICS CORPORATION OR ITS AUTHORIZED REPRESENTATIVE UNLESS OTHERWISE SPECIFIED.		DWN B. HIGMAN 30JAN2007	tyco Electronics		Tyco Electronics Harrisburg, PA 17105-3608				
DIMENSIONS: INCHES		CNR B. HIGMAN 30JAN2007	NAME  FINE ADJUST SIDE FEED HDM APPLICATOR -						
TOLERANCES UNLESS OTHERWISE SPECIFIED:		APVD T. ELBIN 30JAN2007							
9 PLC ±.01		PRODUCT SPEC							
1 PLC ±.01		APPLICATION SPEC							
2 PLC ±.01									
3 PLC ±.001									
4 PLC ±.0001									
ANGLES ±.0001									
FINISH									
MATERIAL		WEIGHT		SIZE	CAGE CODE	DRAWING NO	RESTRICTED TO		
				A1	00779	C=1855171	-		
CUSTOMER DRAWING			SCALE		3:5	SHEET	1 OF 1	REV	A

# Mouser Electronics

Authorized Distributor

Click to View Pricing, Inventory, Delivery & Lifecycle Information:

[TE Connectivity:](#)

[1855171-6](#)