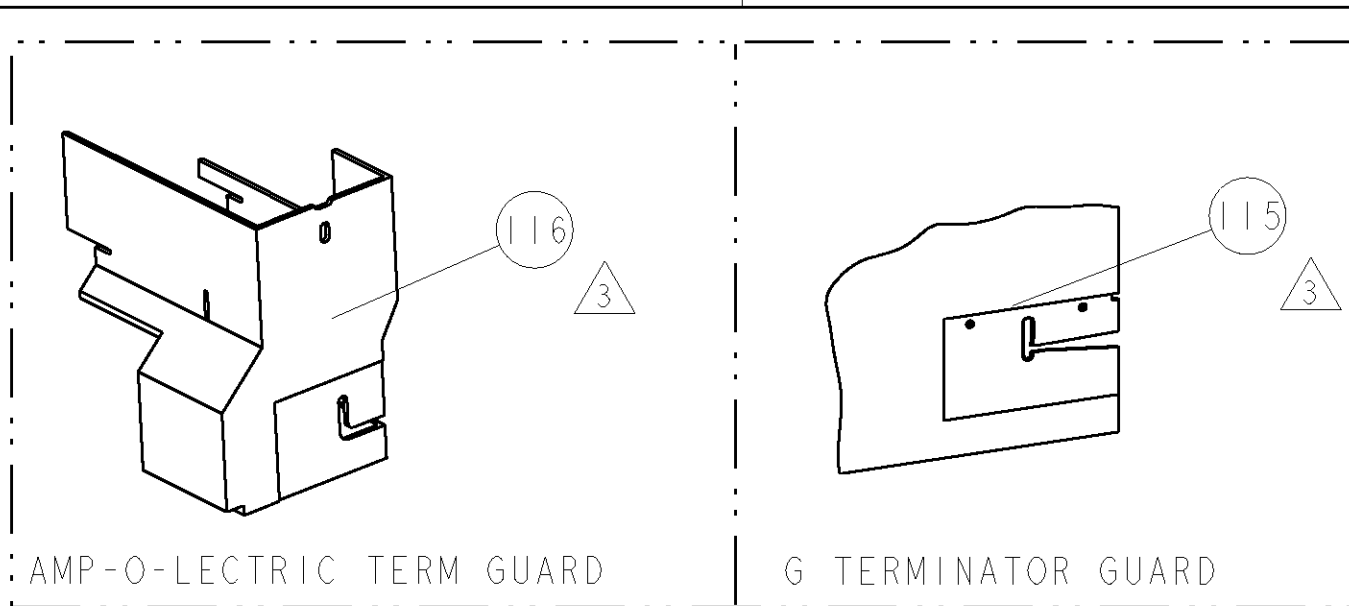
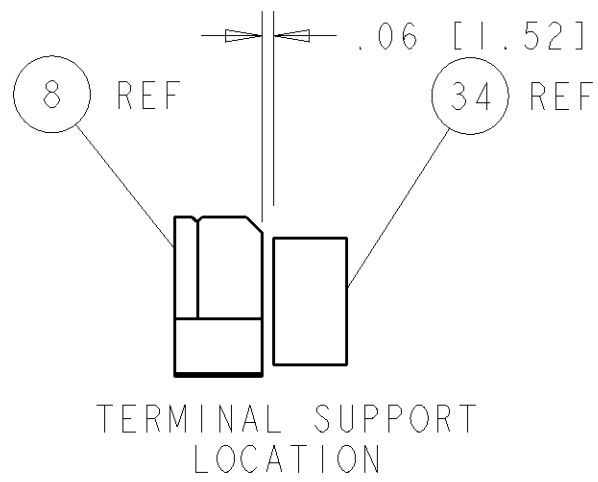
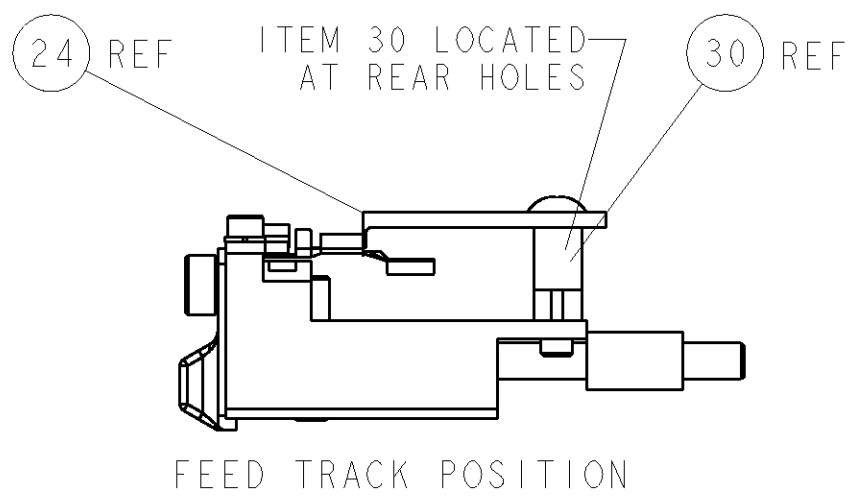
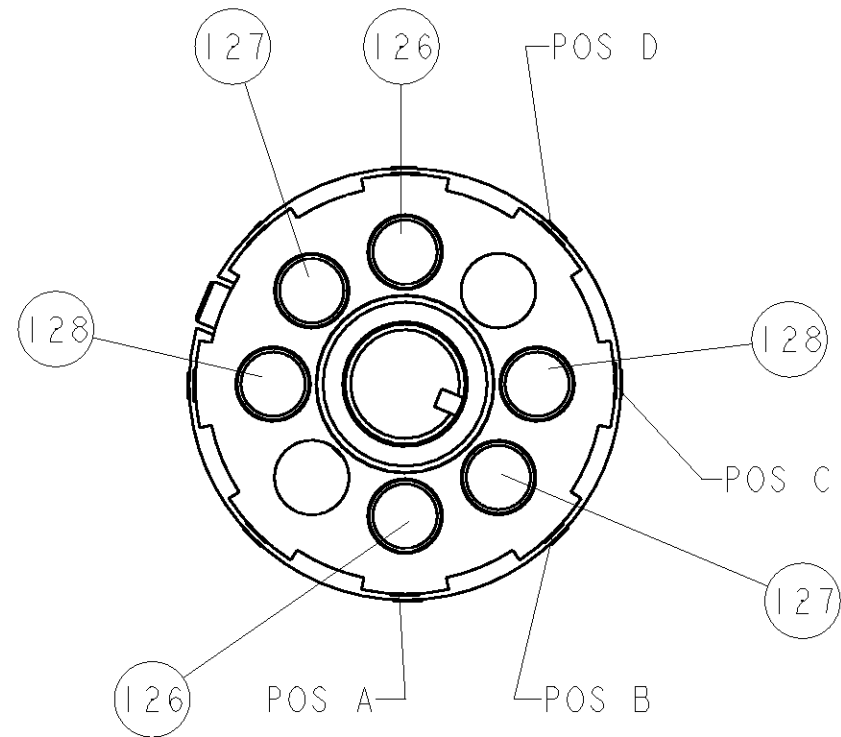
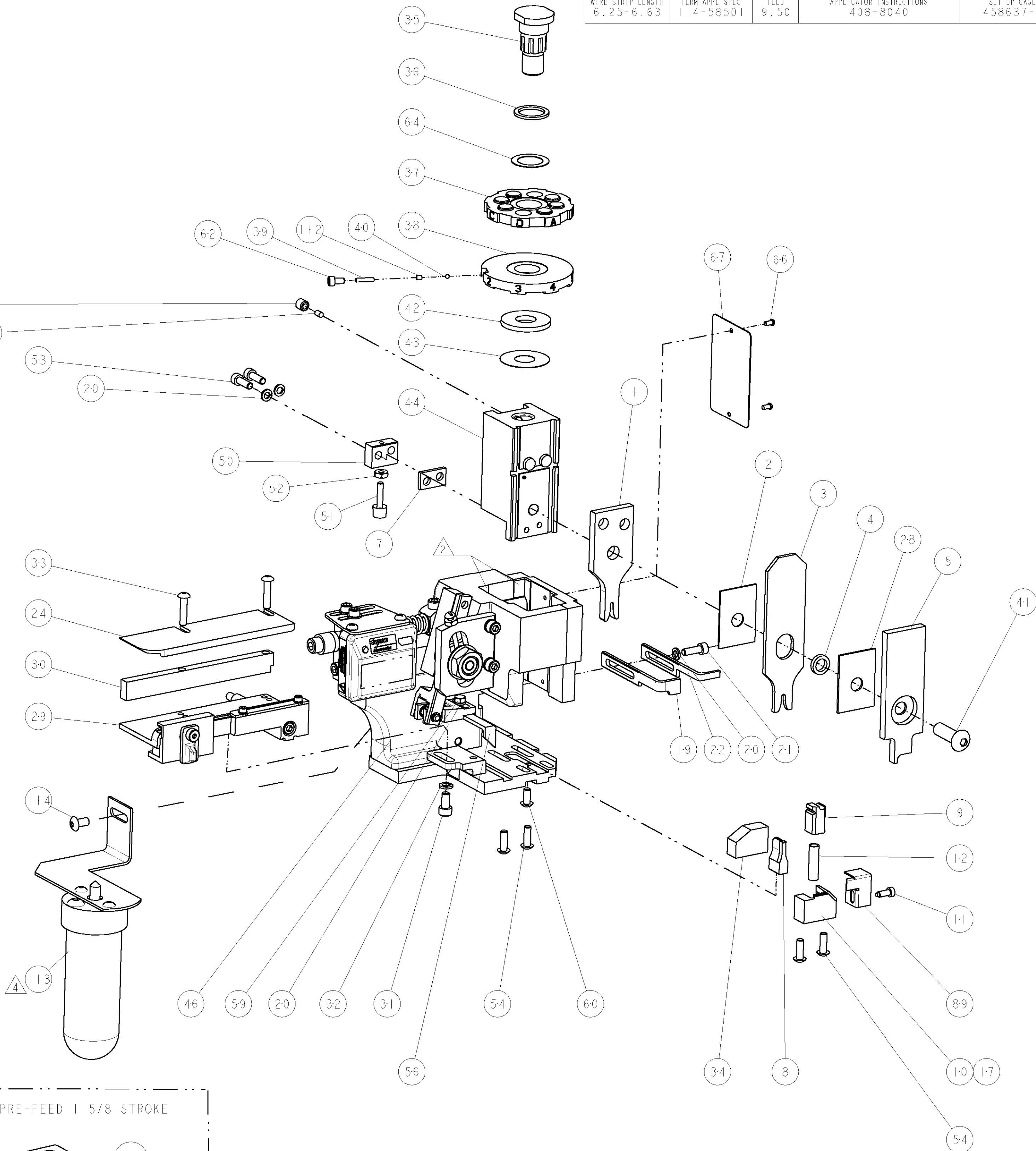


8			7		
THIS DRAWING IS UNPUBLISHED.			RELEASED FOR PUBLICATION		
COPYRIGHT 20			20		
BY TYCO ELECTRONICS CORPORATION. ALL RIGHTS RESERVED.					
PART NUMBER	REV	FIRST USED	POWER UNIT	FEED TYPE	DESCRIPTION
1852413-1	A	122500-1	LEADMAKER	POST FEED	CUTS CARRIER
1852413-2	A	565435-5	BENCH MODEL K	PRE FEED	CUTS CARRIER
1852413-3	A	354500-1	BENCH MODEL G	PRE FEED	CUTS CARRIER
1852413-6	A	122500-1	LEADMAKER	POST FEED	CONTINUOUS CARRIER
7-1852413-7	A	-	-	-	SPARE PARTS

- △ RECOMMENDED SPARE PARTS
△ GREASE LIGHTLY
△ GUARD MUST BE IN PLACE WHEN OPERATING APPLICATOR IN A BENCH MACHINE
△ TERMINAL LUBRICANT IS RECOMMENDED



TERMINAL NAME: 2.8 X 0.8 TERMINAL					
TYCO PN	PIN	AMP TERMINAL - AMP CRIMP SPECS			
1930002-2	-				
-	-	PAD LTR	CRIMP HEIGHT	WIRE SIZE	
-	-	A	1.30±0.05mm [.051±.002]	18AWG or 0.82mm2	
-	-	B	1.15±0.05mm [.045±.002]	20AWG or 0.52mm2	
-	-	C	1.09±0.05mm [.043±.002]	22AWG or 0.38mm2	
-	-	D	-	-	
-	-	CRIMP	SIZE	TYPE	RANGE
-	-	WIRE	1.70mm [.067]	F	22-18 AWG
-	-	INSUL	2.79mm [.110]	O	Ø2.1mm MAX
WIRE STRIP LENGTH 6.25-6.63	TERM APPL SPEC 114-58501	FEED 9.50	APPLICATOR INSTRUCTIONS 408-8040		SET UP GAGE 458637-1



LOC		DIST		REVISONS			
A		66		P. LTR		DATE	DWN
				A		RELEASED	TE
						09MAR2007	MEH

-	2	2	2	2	-	8-354778-0	PIN, WIRE DISC, .2895	128
-	2	2	2	2	-	7-354778-5	PIN, WIRE DISC, .2870	127
-	2	2	2	2	-	6-354778-2	PIN, WIRE DISC, .2805	126
△	-	-	REF	-	..	455749-1	GUARD WINDOW	116
△	-	-	REF	-	..	679532-1	INSERT, GUARD	115
-	-	-	1	-	-	2-21002-6	SCR, BTN SKT HD CAP 10-32 X .375	114
-	-	-	1	-	..	1-465184-0	LUBRICATOR ASSY	113
-	1	1	1	1	-	690603-1	SPRING ASSIST AMP-O-MATOR APPLICATOR	112
-	1	1	1	1	-	1-21002-7	SCR, BTN SKT HD CAP 6-32 X .375	91
-	1	1	1	1	-	318563-1	GUARD, FRONT CHIP	89
-	1	1	1	1	-	4088040	SF APPL INST 408-8040	72
-	1	1	1	1	-	217238-1	GENERAL INSTRUCTION PKG	71
-	1	1	1	1	-	461264-1	PLATE, IDENTIFICATION	67
-	2	2	2	2	-	21017-2	SCREW, DRIVE	66
-	1	1	1	1	-	986950-1	WASHER, FLAT PRECISION	64
-	1	1	1	1	-	21009-2	SCR, SET, SELF LOCKING 1/4-20 X .250	63
-	1	1	1	1	-	23030-1	SCR, SKT HD CAP 6-32 x .25	62
-	1	1	1	1	-	22733-8	SCR, BHSC, SELF-LOCKING, 8-32 X .375	60
-	1	1	1	1	-	2-22603-0	SCR, HEX HD CAP 8-32 X .312	59
-	1	1	1	1	-	458537-2	PAWL, FEED	56
-	4	4	4	4	-	2-21002-2	SCR, BTN SKT HD CAP 8-32 X .500	54
-	2	2	2	2	-	2-21000-7	SCR, SKT HD CAP 8-32 X .500	53
-	1	1	1	1	-	21018-5	NUT, HEX, REG 6-32	52
-	1	1	1	1	-	811242-2	BUMPER, HOLD DOWN	51
-	1	1	1	1	-	690753-1	SPACER, TONKER	50
-	-	1	-	-	..	690602-6	CAM, PRE FEED, 1 5/8	49
-	-	-	1	-	..	690602-5	CAM, PRE FEED, 1 1/8	48
-	1	-	-	1	-	690501-4	CAM, POST FEED, 1 5/8	47
-	1	1	1	1	-	459456-1	APPL. BASIC SUB ASSY (SIDE WISE MQCA)	46
-	1	1	1	1	-	690191-1	PLUG, NYLON	45
-	1	1	1	1	-	819307-1	RAM, SIDE FEED	44
-	1	1	1	1	-	690125-1	SHIM SUB-ASSY	43
-	1	1	1	1	-	690124-1	WASHER, RAM (.115)	42
-	1	1	1	1	-	7-21002-9	SCR, BTN SKT HD CAP 5/16-24 X 1.00	41
-	1	1	1	1	-	23241-6	BALL, STEEL	40
-	1	1	1	1	-	690170-1	SPRING, COMPRESSION	39
-	1	1	1	1	-	690142-5	DISC, INSULATION	38
-	1	1	1	1	-	354777-1	WIRE DISC, ASSEMBLY	37
-	1	1	1	1	-	22480-5	SPRING, COMPRESSION	36
-	1	1	1	1	-	690212-1	POST, RAM	35
-	1	1	1	1	-	5-690786-2	TERMINAL SUPPORT	34
-	2	2	2	2	-	2-21002-4	SCR, BTN SKT HD CAP 8-32 X .750	33
-	1	1	1	1	-	21024-5	WASHER, SPRG LOCK, REG NO 10	32
-	1	1	1	1	-	3-21000-4	SCR, SKT HD CAP 10-32 X .375	31
-	1	1	1	1	-	1-1320908-5	SPACER, STRIP GUIDE	30
-	1	1	1	1	-	1633091-1	ASSEMBLY, STRIP GUIDE	29
-	1	1	1	1	-	1-455888-0	SPACER, CRIMPER	28
-	1	1	1	1	-	1320928-1	PLATE, STRIP GUIDE	24
-	1	-	-	1	-	690472-2	STRIPPER	22
-	1	1	1	1	-	2-21000-7	SCR, SKT HD CAP 8-32 X .500	21
-	4	4	4	4	-	21024-4	WASHER, SPRG LOCK, REG NO 8	20
-	-	1	1	-	-	691353-1	STRIPPER	19
-	1	-	-	-	-	679625-1	SHEAR HOLDER, FRONT (NO CUT)	17
-	1	1	1	1	-	3-22280-3	SPRING, COMPRESSION	12
-	1	1	1	1	-	690461-1	STOP, SHEAR	11
-	-	1	1	1	-	690459-1	SHEAR HOLDER, FRONT	10
-	1	1	1	1	-	462006-1	FLOATING SHEAR, FRONT	9
1	1	1	1	1	-	1633535-2	ANVIL, COMBINATION	8
-	1	1	1	1	-	240641-9	SPACER	7
-	1	1	1	1	-	2-455889-0	DEPRESSOR, SHEAR	5
-	1	1	1	1	-	238011-4	BLOCK, CRIMPER SPACER	4
1	1	1	1	1	-	9-456135-3	CRIMPER, INSULATION O PREMIUM	3
-	1	1	1	1	-	455888-7	SPACER, CRIMPER	2
1	1	1	1	1	-	5-1673600-5	CRIMPER, WIRE	1

DIMENSIONS:		TOLERANCES UNLESS OTHERWISE SPECIFIED:		DWN		Tyco Electronics	
INCHES		9 PLC ±.01		HERR		Harrisburg, PA 17105-3608	
1 PLC ±.01		12FEB2007		T. ELBIN		SIDE FEED HDM APPLICATOR	
3 PLC ±.001		12FEB2007		T. BENCHOFF		-	
4 PLC ±.0001		-		-		-	
FINISH		-		-		-	
MATERIAL		-		-		-	
CUSTOMER DRAWING		-		-		-	
SCALE		3:5		SHEET		OF 1	
REV		A		-		-	

CUSTOMER VIEWABLE ASSEMBLY

Mouser Electronics

Authorized Distributor

Click to View Pricing, Inventory, Delivery & Lifecycle Information:

[TE Connectivity:](#)

[1852413-1](#)