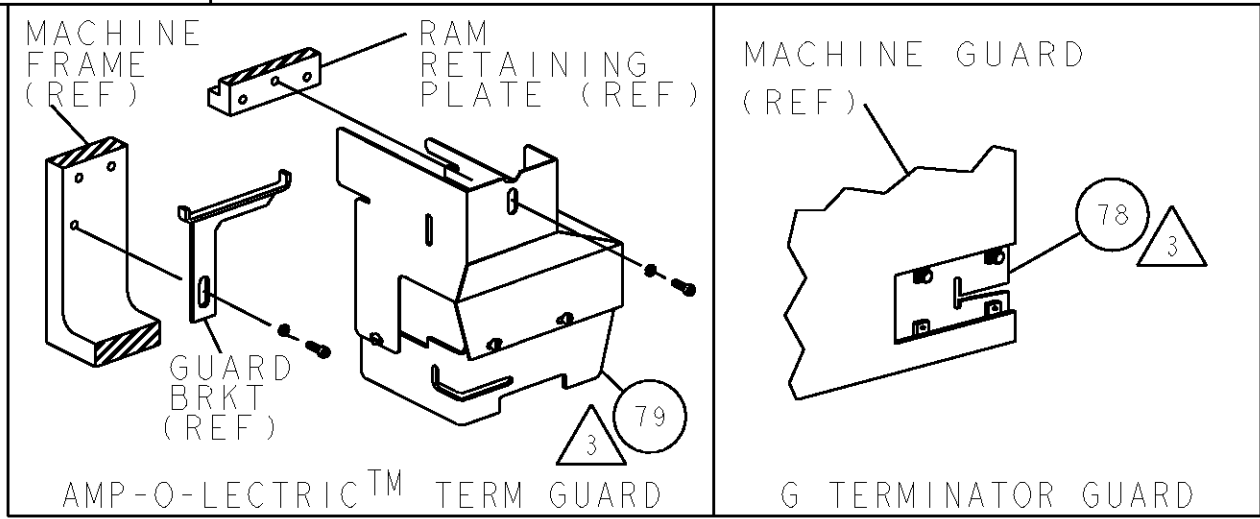
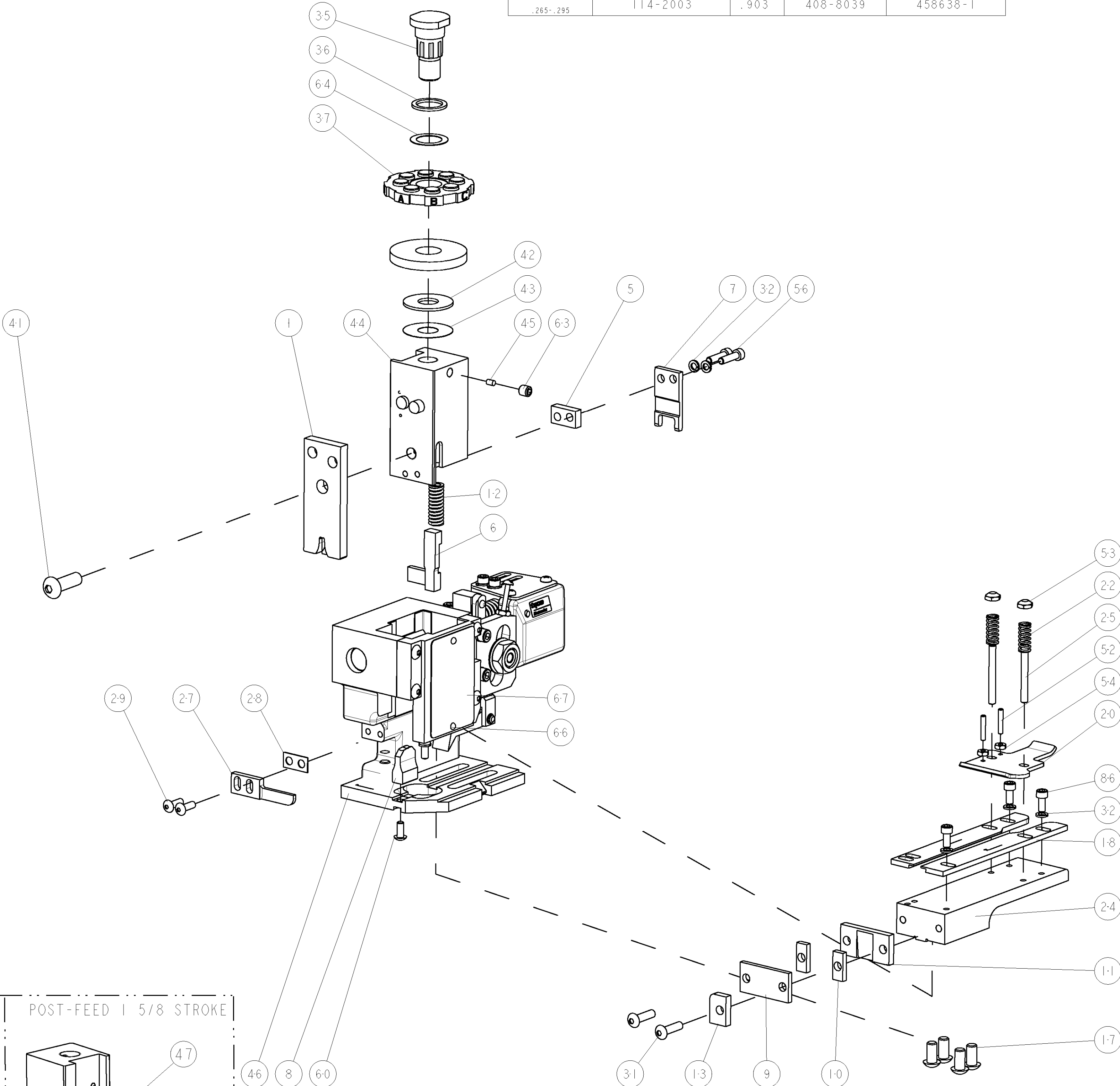


THIS DRAWING IS UNPUBLISHED.		RELEASED FOR PUBLICATION	
COPYRIGHT 20		BY TYCO ELECTRONICS CORPORATION. ALL RIGHTS RESERVED.	
PART NUMBER	REV	FIRST USED	POWER UNIT
1852163-1	C	122500-1	LEADMAKER & BENCH MODEL G
1852163-2	C	565435-5	BENCH MODEL K
7-1852163-7	B	-	SPARE PARTS
		FEED TYPE	
		POST FEED	

- △ RECOMMENDED SPARE PARTS
- △ GREASE LIGHTLY
- △ GUARD MUST BE IN PLACE WHEN OPERATING APPLICATOR IN A BENCH MACHINE
- △ SET-UP MAG WIRE ONLY
- PAD A 1 (12) +2 (16)
- PAD B 1 (14) +1 (12)
- PAD C 1 (14) + 1 (13)
- PAD D 2 (14)




TERMINAL NAME: SPADE, AMPLIVAR 9 SERRATIONS					
1742348	-	AMP TERMINAL - AMP CRIMP SPECS			
-	-				
-	-				
-	-	PAD LTR	CRIMP HEIGHT	WIRE SIZE	
-	-	A	.126±.002[3.20±0.05mm]	11700-13000	
-	-	B	.122±.002[3.10±0.05mm]	10000-11600	
-	-	C	.116±.002[2.95±0.05mm]	8500-10000	
-	-	D	.112±.002[2.84±0.05mm]	7000-8400	
-	-	CRIMP	SIZE	TYPE	RANGE
-	-	WIRE	.180 [4.57mm]	F	7000-13000
-	-	INSUL	-	-	-
WIRE STRIP LENGTH .265-.295		TERM APPL SPEC 114-2003	FEED .903	APPL INSTRUCTIONS 408-8039	SET UP GAGE 458638-1



LOC		DIST		REVISONS			
A		66		P	LTR	DESCRIPTION	DATE
				B		ECR-07-001775	25JAN2007
				C		ECR-07-007396	29MAR2007

-	2	2	-	3-354779-6	PIN, WIRE DISC, .3170	129
-	2	2	-	2-354779-8	PIN, WIRE DISC, .3130	128
-	2	2	-	1-354779-4	PIN, WIRE DISC, .3060	127
-	2	2	-	354779-8	PIN, WIRE DISC, .3030	126
△	4	4	-	2-21000-6	SCR, SKT HD CAP 8-32 X .375	86
△	REF	-	-	455745-1	GUARD WINDOW	79
-	REF	-	-	679532-1	INSERT, GUARD	78
-	1	1	-	217238-1	GENERAL INSTRUCTION PKG	72
-	1	1	-	4088039	EF APPL INST 408-8039	71
-	1	1	-	461264-1	PLATE, IDENTIFICATION	67
-	2	2	-	21017-2	SCREW, DRIVE	66
-	1	1	-	986950-1	WASHER, FLAT PRECISION	64
-	1	1	-	21009-2	SCR, SET, SELF LOCKING 1/4-20 X .250	63
-	1	1	-	22733-8	SCR, BHSC, SELF-LOCKING, 8-32 X .375	60
-	2	2	-	2-21000-8	SCR, SKT HD CAP 8-32 X .625	56
-	2	2	-	21018-4	NUT, HEX, REG 4-40	54
-	2	2	-	21022-2	NUT, LOCK, HEX, TORQUE, 8-32	53
-	2	2	-	2-21006-6	SCR, SET, CUP POINT 4-40 X .625	52
-	1	1	-	1-21002-7	SCR, BTN SKT CAP 6-32 X .375	49
-	1	-	-	690501-3	CAM, POST FEED, 1 1/8	48
-	-	1	-	690501-4	CAM, POST FEED, 1 5/8	47
-	1	1	-	458980-1	SUB ASSY, APPLICATOR FRAME	46
-	1	1	-	690191-1	PLUG, NYLON	45
-	1	1	-	455674-3	RAM	44
-	1	1	-	690125-1	SHIM SUB-ASSY	43
-	1	1	-	690124-5	WASHER, RAM (.062)	42
-	1	1	-	7-21002-9	SCR, BTN SKT HD CAP 5/16-24 X 1.00	41
-	1	1	-	690223-2	SPACER, INS.	38
-	1	1	-	354777-1	WIRE DISC, ASSEMBLY	37
-	1	1	-	22480-5	SPRING, COMPRESSION	36
-	1	1	-	690212-1	POST, RAM	35
-	6	6	-	21024-4	WASHER, SPRG LOCK, REG NO 8	32
-	2	2	-	2-21002-9	SCR, BTN SKT HD CAP 10-32 X .750	31
-	2	2	-	2-21002-2	SCR, BTN SKT HD CAP 8-32 X .500	29
-	1	1	-	1-690451-7	SPACER, STRIPPER	28
-	1	1	-	240639-1	STRIPPER (MACHINING)	27
-	2	2	-	22354-8	STUD, THREADED	25
-	1	1	-	455678-1	PLATE, STRIP GUIDE	24
-	2	2	-	4-22281-1	SPRING, DRAG	22
-	1	1	-	454177-1	DRAG	20
-	1	1	-	2-458030-1	STRIP GUIDE, REAR	18
-	1	1	-	2-458031-1	STRIP GUIDE, FRONT	18
-	4	4	-	3-21002-3	SCR, BTN SKT HD CAP 1/4-20 X .500	17
-	1	1	-	690481-2	SPACER, HOLD DOWN	13
-	1	1	-	23846-1	SPRING, DIE	12
△	1	1	-	240644-1	PLATE, REAR SHEAR	11
-	2	2	-	2-240645-7	SPACER, SHEAR PLATE	10
△	1	1	-	240642-1	PLATE, FRONT SHEAR	9
△	1	1	-	1633354-1	ANVIL, COMBINATION	8
△	1	1	-	2-240651-9	BLADE, SLUG	7
-	1	1	-	3-455892-4	HOLD DOWN, TERMINAL	6
-	1	1	-	1-240641-8	SPACER	5
△	1	1	-	1-462808-5	CRIMPER, BLUNT F	1

-77			-2	-1	U/M	PART NO		DESCRIPTION			ITEM NO				
THIS DRAWING IS A TOLERANCE DOCUMENT FOR TYCO ELECTRONICS CORPORATION IT IS VALID FOR THE ENTIRETY OF THE CONTRACTING ORGANIZATION SHOULD BE CONTACTED FOR THE LATEST REVISION.						DWN C. REICHELDERFER	14NOV05	tyco	Tyco Electronics						
DIMENSIONS:  INCHES						CHK T. ELBIN	14NOV2005	Electronics	Harrisburg, PA 17105-3608						
						APVD T. BENCHOFF	14NOV2005	NAME	END FEED HDM APPLICATOR						
						PRODUCT SPEC	-	-	SIZE		CAGE CODE	DRAWING NO	RESTRICTED TO		
						APPLICATION SPEC	-	-			A	00779	C=1852163	-	
						MATERIAL	FINISH	WEIGHT			-	-	-	-	-
						-	-	-			-	-	-	-	-
						CUSTOMER DRAWING			SCALE	3:5	SHEET	1	OF	REV	C

# Mouser Electronics

Authorized Distributor

Click to View Pricing, Inventory, Delivery & Lifecycle Information:

[TE Connectivity:](#)

[1852163-1](#)