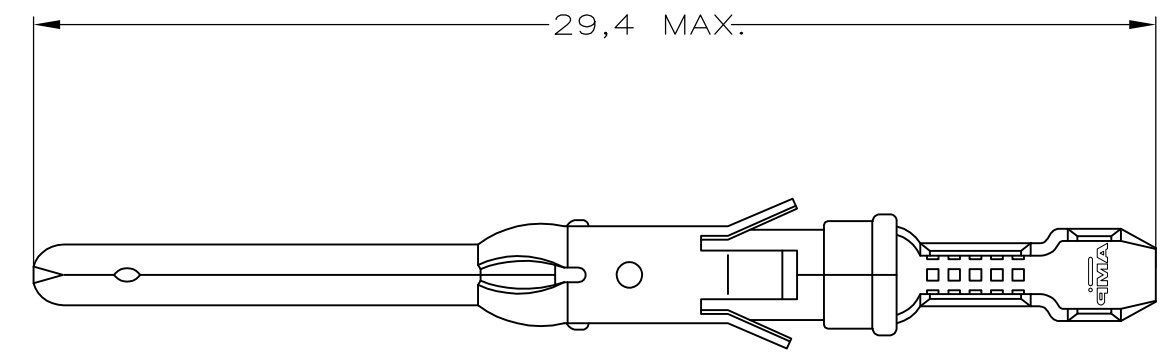
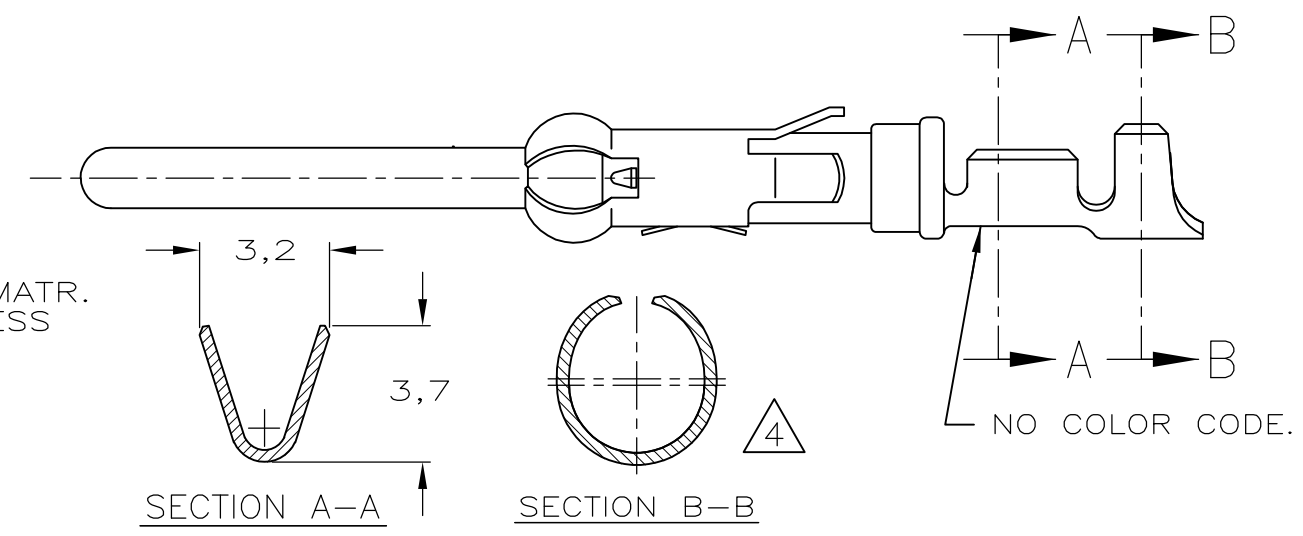
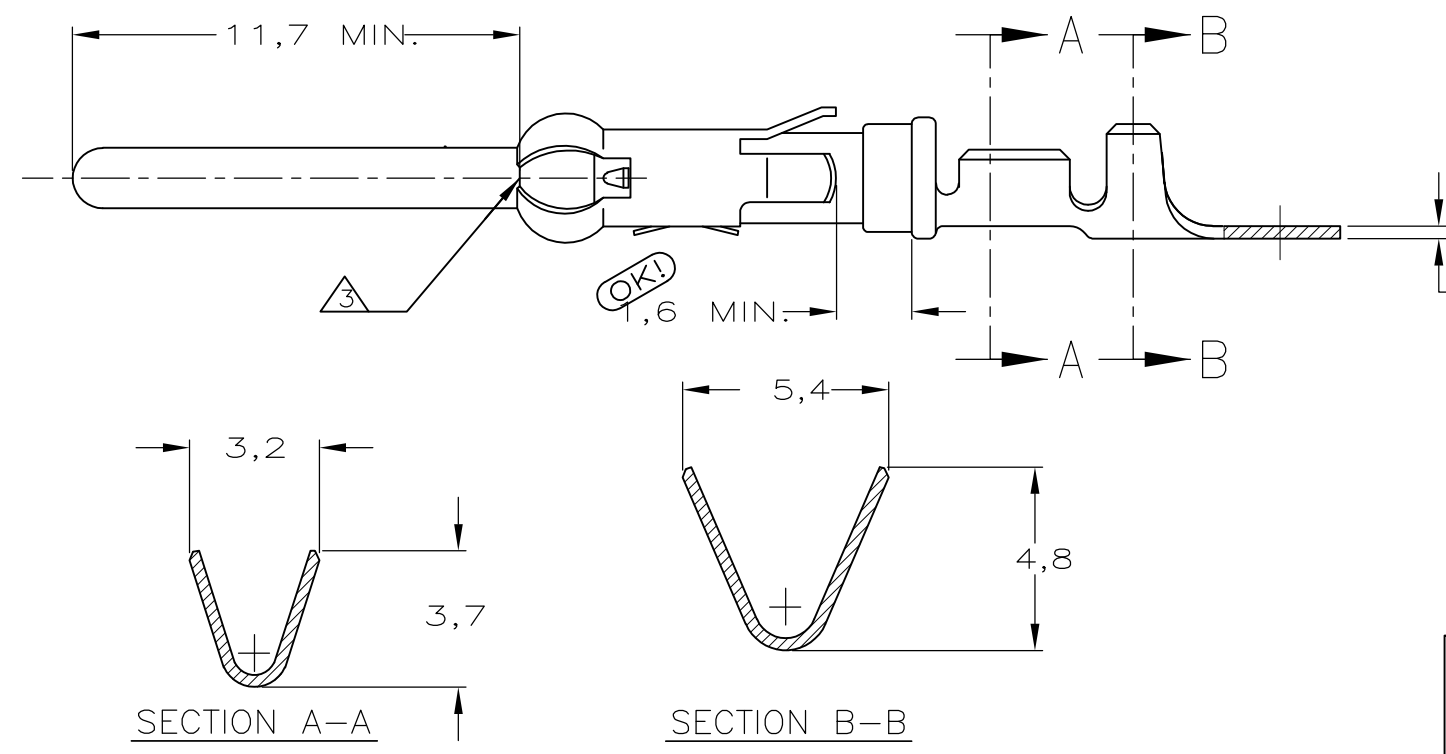


STRIP



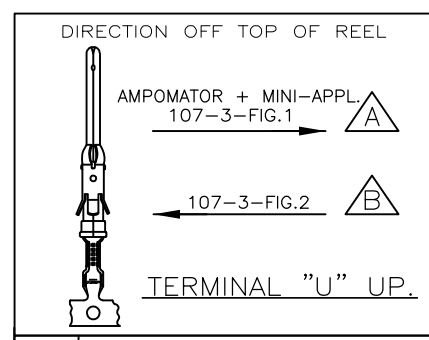
LOOSE PIECE




WIRE RANGE : 1,0-2,5 mm² (13-17 AWG)
INSUL. RANGE : 2,5-3,8 mm (.100-.150)

- NOTES :
- 1 FOR CRIMPDETAILS SEE AMP-SPEC. 114-19.000 .
 - 2 MEETS PRODUCTSPECIFICATION 108-10042.
 - 3 0,40 MAX. GAP BETWEEN SPRING-NOSE AND CONTACT BODY.
 - 4 PREFORMED FOR USE IN HANDTOOL CRIMPAC TOOL II 825582.
 - 30 OBSOLETE PARTS: OBSOLETE CIS STREAMLINING PER D.RENAUD/D.SINISI
 - 31 OBSOLETE PART.

NOTES	MATERIAL	THICKNESS	AREA
20	TIN	2,0 μm	ALL OVER
21	NICKEL GOLD TIN/LEAD	0,8 μm	ALL OVER CONTACT AREA BARREL
22	NICKEL GOLD GOLD	0,8 μm	ALL OVER CONTACT AREA ALL OVER
23	NICKEL GOLD GOLD	1,2 μm	ALL OVER CONTACT AREA ALL OVER
27	NICKEL SILVER TIN/LEAD	2,5 μm	ALL OVER CONTACT AREA BARREL
28	SILVER	0,5 μm	ALL OVER
29	SILVER	2,5 μm	ALL OVER



1-166824-0	A		PH.BRONZE	SEL.SILVER	27
166824-9	B		PH.BRONZE	SEL.SILVER	27
30 166824-8	A		PH.BRONZE	ECON.GOLD	21
166824-7	B		PH.BRONZE	ECON.GOLD	21
166824-6	A		PH.BRONZE	FULL SILVER	29
166824-5	B		PH.BRONZE	FULL SILVER	29
166824-4	A		BRASS	PRE-TIN	
30 166824-3	B		BRASS	PRE-TIN	
166824-2	A		PH.BRONZE	PRE-TIN	
166824-1	B	31 166827-1	PH.BRONZE	PRE-TIN	
PARTNUMBER	DIRECTION OF REEL	LOOSE-PIECE	MATERIAL	PLATING	
—	—	—	—	—	—
—	—	—	—	—	—
—	—	—	—	—	—
L2	ECR-10-000004	RK	SRE	05APR10	
L1	ECO-09-024717	KK	AEG	06NOV09	
L	EH-0266-95	D.K.	R.V.	06 MAR 95	
K	H-8889	JvdH	MvD	22-07-91	
LTR.	REVISION RECORD	DR.	CHK.	DATE	
DR.:	L.V.D.HEIJDEN.	CHK.:	M.V.DRIEL.	APP.:	L.V.SOEST.
DATE:	19-08-87	DATE:	—	DATE:	—
CUSTOMER DRAWING FOR REFERENCE ONLY WILL NOT BE UPDATED					
© COPYRIGHT 19 — BY AMP-HOLLAND B.V. ALL INTERNATIONAL RIGHTS RESERVED.AMP PRODUCTS MAY BE COVERED BY U.S. AND FOREIGN AND/OR PATENTS PENDING.					
THIS DRAWING IS UNPUBLISHED RELEASED FOR PUBLICATION AUG,19 87					
			AMP-HOLLAND B.V. 's-Hertogenbosch, The Netherlands.		
NAME					
PIN TYPE III CONTACT. SIZE 16 (LONG PIN)					
DWG.No. 166824			REV.LTR. L2 SHEET 1 of 1 A3		

Mouser Electronics

Authorized Distributor

Click to View Pricing, Inventory, Delivery & Lifecycle Information:

[TE Connectivity:](#)

[166824-2](#)