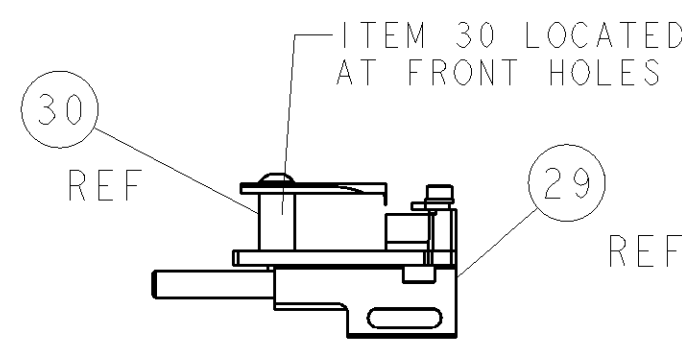
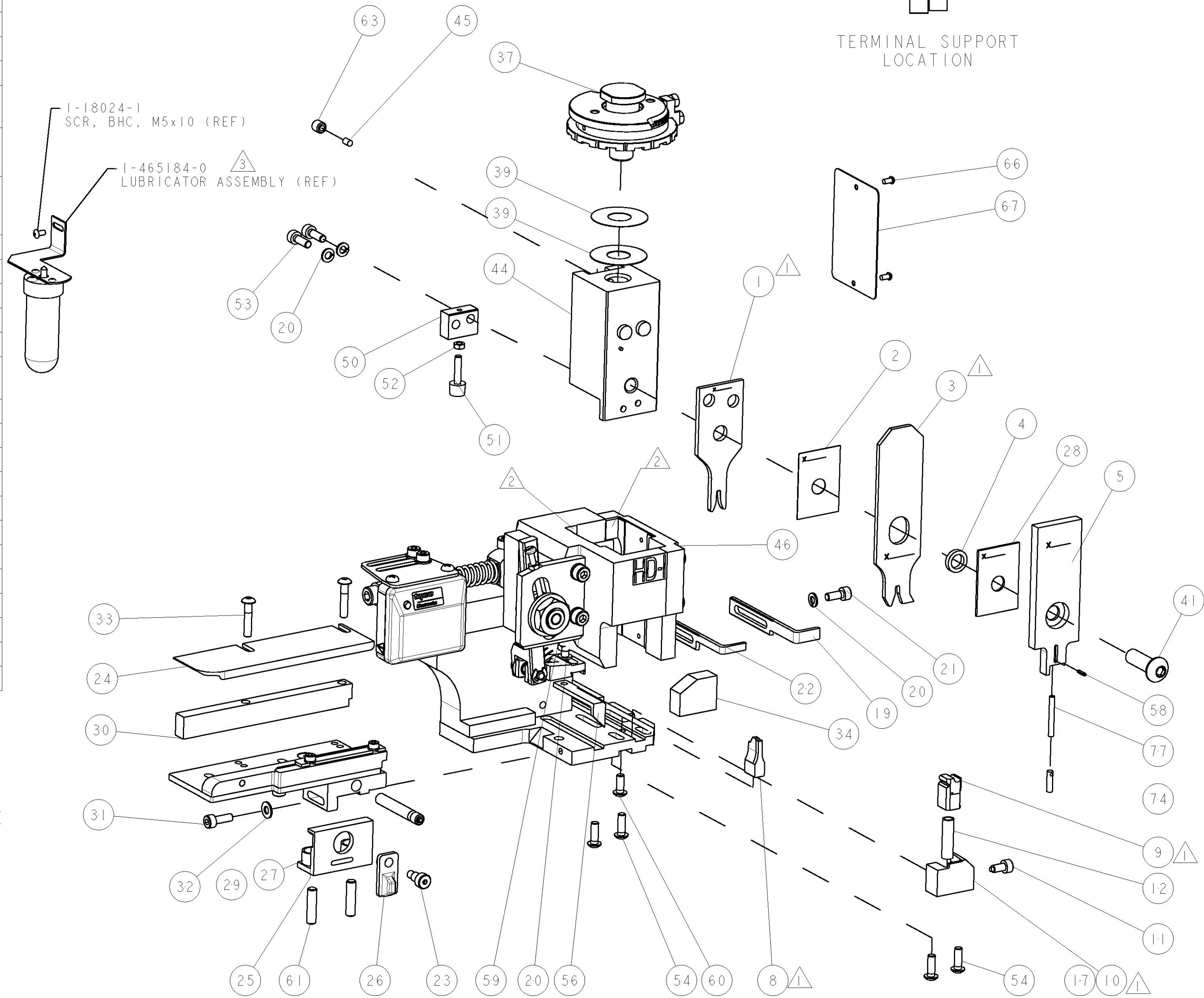


1. RECOMMENDED SPARE PARTS.

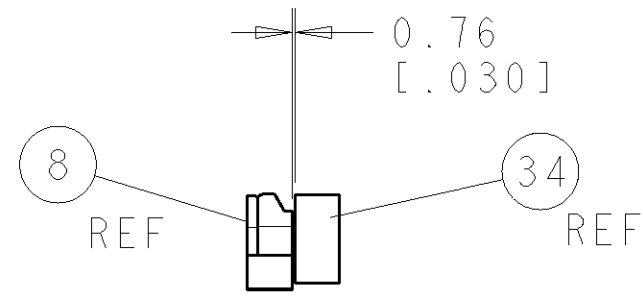
2. GREASE RAM, CAM, CAM FOLLOWER AND FEED ROD LIGHTLY.

3. CERTAIN TERMINALS REQUIRE LUBRICATION. REFER TO THE APPLICATOR INSTRUCTION SHEET FOR MORE INFORMATION.

4. LUBRICATE DAILY PER THE APPLICATOR INSTRUCTION SHEET SUPPLIED WITH THE APPLICATOR.



FEED TRACK POSITION GUIDE BY WIRE BARREL



TERMINAL SUPPORT
LOCATION

| SET UP GAGE 458637-3 | | | | | | | LOC A | DIST 66 | REVISIONS | | | | |
|-------------------------|-----|---------------|---|---|---|---|-------------|---------------------------------|-----------|------|--|--|--|
| P | LTR | DESCRIPTION | | | | | DATE | BH | DWN | APVD | | | |
| A | | RELEASED | | | | | 24JUL2007 | BH | | | | | |
| B | | ECR-07-017315 | | | | | 24JUL2007 | MY | | TN | | | |
| | | | | | | | | | | | | | |
| | | | | | | | | | | | | | |
| - | - | - | - | - | - | - | - | - | - | 73 | | | |
| - | - | - | - | - | - | - | - | - | - | 72 | | | |
| I | I | I | I | I | I | I | 1338705-3 | DOCUMENTATION PACKAGE | | 71 | | | |
| - | - | - | - | - | - | - | - | - | - | 70 | | | |
| - | - | - | - | - | - | - | - | - | - | 69 | | | |
| - | - | - | - | - | - | - | - | - | - | 68 | | | |
| I | I | I | I | I | I | I | 461264-5 | PLATE, IDENTIFICATION | | 67 | | | |
| 2 | 2 | 2 | 2 | 2 | 2 | 2 | 21017-2 | SCREW, DRIVE | | 66 | | | |
| - | - | - | - | - | - | - | - | - | - | 65 | | | |
| - | - | - | - | - | - | - | - | - | - | 64 | | | |
| I | I | I | I | I | I | I | 3-18031-0 | SCR, SET, CUP POINT M6 X 6.0 | | 63 | | | |
| - | - | - | - | - | - | - | - | - | - | 62 | | | |
| 2 | 2 | 2 | 2 | 2 | 2 | 2 | 2-18032-5 | SCR, SET, FLT POINT M5 X 20.0 | | 61 | | | |
| I | I | I | I | I | I | I | 18024-7 | SCR, BTN SKT HD CAP (M4 X 10.0) | | 60 | | | |
| I | I | I | I | I | I | I | 5-18022-2 | SCR, HEX HD CAP M4 X 8.0 | | 59 | | | |
| I | I | I | I | I | I | I | 21028-2 | PIN, SLOTTED SPRING .062 X .250 | | 58 | | | |
| - | - | - | - | - | - | - | - | - | - | 57 | | | |
| I | I | I | I | I | I | I | 1338685-1 | PAWL, FEED | | 56 | | | |
| - | - | - | - | - | - | - | - | - | - | 55 | | | |
| 4 | 4 | 4 | 4 | 4 | 4 | 4 | 18024-8 | SCR, BTN SKT HD CAP (M4 X 12.0) | | 54 | | | |
| 2 | 2 | 2 | 2 | 2 | 2 | 2 | 1-18023-2 | SCR, SKT HD CAP M4 X 12.0 | | 53 | | | |
| I | I | I | I | I | I | I | 18030-1 | NUT, HEX, REG M3 | | 52 | | | |
| I | I | I | I | I | I | I | 811242-5 | BUMPER, HOLD DOWN | | 51 | | | |
| I | I | I | I | I | I | I | 690753-2 | SPACER, TONKER | | 50 | | | |
| I | I | I | I | I | I | I | 18024-3 | SCR, BTN SKT HD CAP (M3 X 10.0) | | 49 | | | |
| - | I | - | - | - | I | - | 1338675-1 | CAM, UNIVERSAL PRE FEED | | 48 | | | |
| I | - | I | I | - | I | - | 1338676-1 | CAM, UNIVERSAL POST-FEED | | 47 | | | |
| I | I | I | I | I | I | I | 1320999-3 | APPLICATOR SUBASSEMBLY, HDI | | 46 | | | |
| I | I | I | I | I | I | I | 690191-1 | PLUG,NYLON | | 45 | | | |
| I | I | I | I | I | I | I | 1338660-1 | RAM | | 44 | | | |
| - | - | - | - | - | - | - | - | - | - | 43 | | | |
| - | - | - | - | - | - | - | - | - | - | 42 | | | |
| I | I | I | I | I | I | I | 2-18024-6 | SCR, BTN SKT HD CAP (M8 X 25.0) | | 41 | | | |
| - | - | - | - | - | - | - | - | - | - | 40 | | | |
| I | I | I | I | I | I | I | 690125-1 | SHIM SUB-ASSY | | 39 | | | |
| I | I | I | I | I | I | I | 1-469367-0 | SHIM | | 38 | | | |
| I | I | I | I | I | I | I | 879103-3 | FINE ADJUST HEAD SUBASSY | | 37 | | | |
| - | - | - | - | - | - | - | - | - | - | 36 | | | |
| - | - | - | - | - | - | - | - | - | - | 35 | | | |
| I | I | I | I | I | I | I | 1320934-1 | SUPPORT, TERMINAL | | 34 | | | |
| 2 | 2 | 2 | 2 | 2 | 2 | 2 | 1-18024-0 | SCR, BTN SKT HD CAP (M4 X 20.0) | | 33 | | | |
| I | I | I | I | I | I | I | 18027-2 | WASHER, FLAT, REG M4 | | 32 | | | |
| I | I | I | I | I | I | I | 1-18023-2 | SCR, SKT HD CAP M4 X 12.0 | | 31 | | | |
| I | I | I | I | I | I | I | 1320908-1 | SPACER, STRIP GUIDE | | 30 | | | |
| I | I | I | I | I | I | I | 1633073-1 | STRIP GUIDE ASSEMBLY | | 29 | | | |
| I | I | I | I | I | I | I | 1-455888-0 | SPACER, CRIMPER | | 28 | | | |
| 2 | 2 | 2 | 2 | 2 | 2 | 2 | 1-22284-0 | SPRING, COMPRESSION | | 27 | | | |
| I | I | I | I | I | I | I | 356835-I | LEVER, DRAG RELEASE | | 26 | | | |
| I | I | I | I | I | I | I | 240792-1 | DRAG, TERMINAL | | 25 | | | |
| I | I | I | I | I | I | I | 1320928-1 | PLATE, STRIP GUIDE | | 24 | | | |
| I | I | I | I | I | I | I | 980371-4 | SCR, SKT HD SHLDR 5.0 DIA X 6.0 | | 23 | | | |
| I | - | I | I | - | I | - | 690472-2 | STRIPPER | | 22 | | | |
| I | I | I | I | I | I | I | 1-18023-1 | SCR, SKT HD CAP M4 X 10.0 | | 21 | | | |
| 4 | 4 | 4 | 4 | 4 | 4 | 4 | 18025-2 | WASHER, SPRG LOCK, REG M4 | | 20 | | | |
| - | I | - | - | I | - | - | 690472-1 | STRIPPER | | 19 | | | |
| - | - | - | - | - | - | - | - | - | - | 18 | | | |
| I | - | - | I | - | - | - | 1338684-1 | SHEAR HOLDER, FRONT | | 17 | | | |
| - | - | - | - | - | - | - | - | - | - | 16 | | | |
| - | - | - | - | - | - | - | - | - | - | 15 | | | |
| - | - | - | - | - | - | - | - | - | - | 14 | | | |
| - | - | - | - | - | - | - | - | - | - | 13 | | | |
| I | I | I | I | I | I | I | 3-22280-3 | SPRING, COMPRESSION | | 12 | | | |
| I | I | I | I | I | I | I | 356885-4 | STOP, SHEAR | | 11 | | | |
| - | I | I | - | I | I | I | 1320921-1 | SHEAR HOLDER, FRONT, CUT | | 10 | | | |
| I | I | I | I | I | I | I | 462006-1 | FLOATING SHEAR, FRONT | | 9 | | | |
| 2 | 2 | 2 | I | I | I | I | 7-1333205-8 | ANVIL, COMBINATION | | 8 | | | |
| - | - | - | - | - | - | - | - | - | - | 7 | | | |
| - | - | - | - | - | - | - | - | - | - | 6 | | | |
| I | I | I | I | I | I | I | 854772-1 | DEPRESSOR, SHEAR | | 5 | | | |
| I | I | I | I | I | I | I | 238011-4 | BLOCK, CRIMPER SPACER | | 4 | | | |
| 2 | 2 | 2 | I | I | I | I | 679440-2 | CRIMPER, INSULATION F | | 3 | | | |
| I | I | I | I | I | I | I | 455888-2 | SPACER, CRIMPER | | 2 | | | |
| 2 | 2 | 2 | I | I | I | I | 4-456406-1 | CRIMPER, WIRE PREMIUM | | | | | |

VIEW B ROTATED 180°

| POST-FEED 40mm STROKE | POST-FEED 30mm STROKE | PRE-FEED 30mm STROKE | PRE-FEED 40mm STROKE |
|-----------------------|-----------------------|----------------------|----------------------|
| | | | |

| | | | | | | | | | | |
|-----|-----|-----|-----|----|----|----|---------|-------------|---------------------|---------|
| - | - | - | - | - | - | - | - | - | - | 83 |
| - | - | - | - | - | - | - | - | - | - | 82 |
| - | - | - | - | - | - | - | - | - | - | 81 |
| - | - | - | - | - | - | - | - | - | - | 80 |
| - | - | - | - | - | - | - | - | - | - | 79 |
| - | - | - | - | - | - | - | - | - | - | 78 |
| - | I | I | I | I | I | I | I | 5-547505-2 | SPRING, COMPRESSION | 77 |
| - | - | - | - | - | - | - | - | - | - | 76 |
| - | - | - | - | - | - | - | - | - | - | 75 |
| - | I | I | I | I | I | I | I | 854769-4 | HOLDER, INS | 74 |
| -77 | -76 | -72 | -71 | -6 | -2 | -1 | PART NO | DESCRIPTION | | ITEM NO |

| | | | | | |
|---|--|--|--|--|--|
| <small>5% TYPICAL ±1% TOLERANCE DOCUMENT FOR INFORMATIONAL PURPOSES ONLY 10% TYPICAL ±1% TOLERANCE DOCUMENT FOR INFORMATIONAL PURPOSES ONLY 15% TYPICAL ±1% TOLERANCE DOCUMENT FOR INFORMATIONAL PURPOSES ONLY 20% TYPICAL ±1% TOLERANCE DOCUMENT FOR INFORMATIONAL PURPOSES ONLY 25% TYPICAL ±1% TOLERANCE DOCUMENT FOR INFORMATIONAL PURPOSES ONLY 30% TYPICAL ±1% TOLERANCE DOCUMENT FOR INFORMATIONAL PURPOSES ONLY 35% TYPICAL ±1% TOLERANCE DOCUMENT FOR INFORMATIONAL PURPOSES ONLY 40% TYPICAL ±1% TOLERANCE DOCUMENT FOR INFORMATIONAL PURPOSES ONLY 45% TYPICAL ±1% TOLERANCE DOCUMENT FOR INFORMATIONAL PURPOSES ONLY 50% TYPICAL ±1% TOLERANCE DOCUMENT FOR INFORMATIONAL PURPOSES ONLY 55% TYPICAL ±1% TOLERANCE DOCUMENT FOR INFORMATIONAL PURPOSES ONLY 60% TYPICAL ±1% TOLERANCE DOCUMENT FOR INFORMATIONAL PURPOSES ONLY 65% TYPICAL ±1% TOLERANCE DOCUMENT FOR INFORMATIONAL PURPOSES ONLY 70% TYPICAL ±1% TOLERANCE DOCUMENT FOR INFORMATIONAL PURPOSES ONLY 75% TYPICAL ±1% TOLERANCE DOCUMENT FOR INFORMATIONAL PURPOSES ONLY 80% TYPICAL ±1% TOLERANCE DOCUMENT FOR INFORMATIONAL PURPOSES ONLY 85% TYPICAL ±1% TOLERANCE DOCUMENT FOR INFORMATIONAL PURPOSES ONLY 90% TYPICAL ±1% TOLERANCE DOCUMENT FOR INFORMATIONAL PURPOSES ONLY 95% TYPICAL ±1% TOLERANCE DOCUMENT FOR INFORMATIONAL PURPOSES ONLY 100% TYPICAL ±1% TOLERANCE DOCUMENT FOR INFORMATIONAL PURPOSES ONLY</small> | | DWG: B_HIGMAN 06MAR2006 DES: B_HIGMAN 06MAR2006 APP'D: J_ELBIN 06MAR2006 | | tyco Electronics Tyco Electronics Harrisburg, PA 17105-3608 | |
| DIMENSIONS: mm [IN] | | TOLERANCES UNLESS OTHERWISE SPECIFIED: | | NAME: FINE ADJ SIDE FEED HD-1 APPL | |
| | | PRODUCT SPEC: APPLICATION SPEC: See Table | | SIZE: CAGE CODE: DRAWING NO: | |
| MATERIAL: | | FINISH: | | RESTRICTED TO: | |
| | | WEIGHT: | | A 00779 C=1530012 | |
| | | CUSTOMER DRAWING | | SCALE: 3:5 SHEET 1 OF 1 REV B | |

Mouser Electronics

Authorized Distributor

Click to View Pricing, Inventory, Delivery & Lifecycle Information:

[TE Connectivity:](#)

[1530012-6](#)