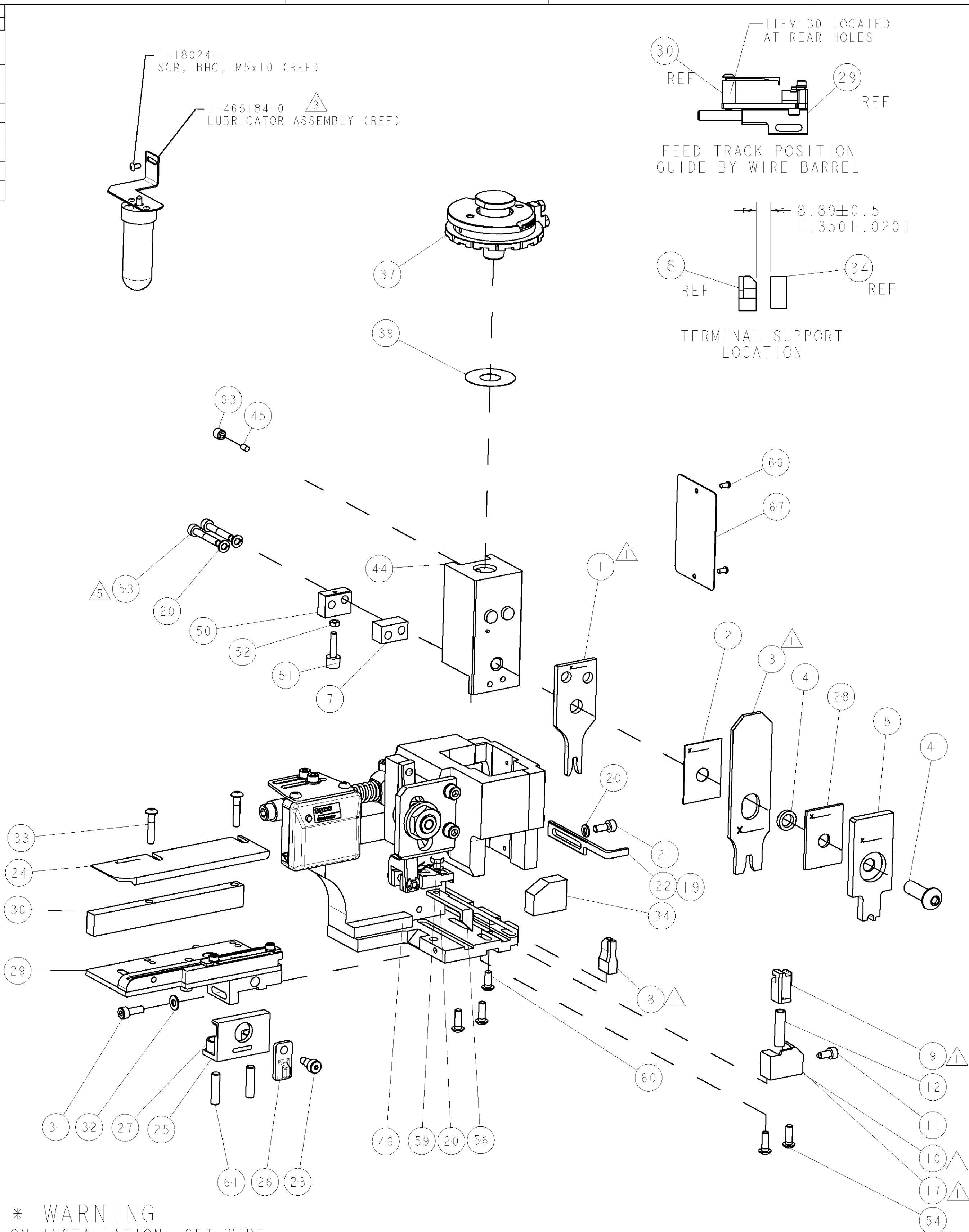


AMP 4805 REV 31MAR2000

* WARNING
ON INSTALLATION, SET WIRE
DISC TO LARGEST WIRE SIZE
SETTING. USE OF SETTINGS
BELOW MIN. REQUIRED CRIMP
HEIGHT SETTING WILL CAUSE
DAMAGE TO CRIMP TOOLING.

-	-	-	-	-	-	-	-	-	84
-	-	-	-	-	-	-	-	-	83
-	-	-	-	-	-	-	-	-	82
-	-	-	-	-	-	-	-	-	81
-	-	-	-	-	-	-	-	-	80
-	-	-	-	-	-	-	-	-	79
-	-	-	-	-	-	-	-	-	78
-	-	-	-	-	-	-	-	-	77
-	-	-	-	-	-	-	-	-	76
-	-	-	-	-	-	-	-	-	75
-	-	-	-	-	-	-	-	-	74
-77	-76	-72	-71	-6	-2	-1	PART NO	DESCRIPTION	ITEM NO

SET UP GAGE 458637-3				LOC A	DIST 66	REVIEWS			
P		LTR		DESCRIPTION		DATE	DWN	APVD	
		A		SEE ECO-06-011725		18MAY2006	LJL	MC	
-	-	-	-	-	-			73	
-	-	-	-	-	-			72	
1	1	1	1	1	1338705-3	DOCUMENTATION PACKAGE		71	
-	-	-	-	-	-	-		70	
-	-	-	-	-	-	-		69	
-	-	-	-	-	-	-		68	
1	1	1	1	1	461264-5	PLATE, IDENTIFICATION		67	
2	2	2	2	2	21017-2	SCREW, DRIVE		66	
-	-	-	-	-	-	-		65	
-	-	-	-	-	-	-		64	
1	1	1	1	1	3-18031-0	SCR, SET, CUP POINT M6 X 6.0		63	
-	-	-	-	-	-	-		62	
2	2	2	2	2	2-18032-5	SCR, SET, FLT POINT M5 X 20.0		61	
1	1	1	1	1	18024-7	SCR, BTN SKT HD CAP (M4 X 10.0)		60	
1	1	1	1	1	5-18022-2	SCR, HEX HD CAP M4 X 8.0		59	
-	-	-	-	-	-	-		58	
-	-	-	-	-	-	-		57	
1	1	1	1	1	1338685-1	PAWL, FEED		56	
-	-	-	-	-	-	-		55	
4	4	4	4	4	18024-8	SCR, BTN SKT HD CAP (M4 X 12.0)		54	
2	2	2	2	2	1-18023-5	SCR, SKT HD CAP M4 X 25.0		53	
1	1	1	1	1	18030-1	NUT, HEX, REG M3		52	
1	1	1	1	1	811242-5	BUMPER, HOLD DOWN		51	
1	1	1	1	1	690753-2	SPACER, TONKER		50	
1	1	1	1	1	18024-3	SCR, BTN SKT HD CAP (M3 X 10.0)		49	
1	-	-	1	-	1338675-1	CAM, UNIVERSAL PRE FEED		48	
-	1	1	-	1	1338676-1	CAM, UNIVERSAL POST-FEED		47	
1	1	1	1	1	1320999-3	APPLICATOR SUBASSEMBLY, HDI		46	
1	1	1	1	1	690191-1	PLUG,NYLON		45	
1	1	1	1	1	1338660-1	RAM		44	
-	-	-	-	-	-	-		43	
-	-	-	-	-	-	-		42	
1	1	1	1	1	2-18024-6	SCR, BTN SKT HD CAP (M8 X 25.0)		41	
-	-	-	-	-	-	-		40	
1	1	1	1	1	690125-1	SHIM SUB-ASSY		39	
-	-	-	-	-	-	-		38	
1	1	1	1	1	879103-2	DISC, ADJUSTABLE GEITNER		37	
-	-	-	-	-	-	-		36	
-	-	-	-	-	-	-		35	
1	1	1	1	1	1320934-1	SUPPORT, TERMINAL		34	
2	2	2	2	2	1-18024-0	SCR, BTN SKT HD CAP (M4 X 20.0)		33	
1	1	1	1	1	18027-2	WASHER, FLAT, REG M4		32	
1	1	1	1	1	1-18023-2	SCR, SKT HD CAP M4 X 12.0		31	
1	1	1	1	1	1320908-6	SPACER, STRIP GUIDE		30	
1	1	1	1	1	1633073-2	STRIP GUIDE ASSEMBLY		29	
1	1	1	1	1	1-455888-6	SPACER, CRIMPER		28	
2	2	2	2	2	1-22284-0	SPRING, COMPRESSION		27	
1	1	1	1	1	356835-1	LEVER, DRAG RELEASE		26	
1	1	1	1	1	240792-1	DRAG, TERMINAL		25	
1	1	1	1	1	1320928-1	PLATE, STRIP GUIDE		24	
1	1	1	1	1	980371-4	SCR, SKT HD SHLDR 5.0 DIA X 6.0		23	
-	1	1	-	1	690472-2	STRIPPER		22	
1	1	1	1	1	1-18023-1	SCR, SKT HD CAP M4 X 10.0		21	
4	4	4	4	4	18025-2	WASHER, SPRG LOCK, REG M4		20	
1	-	-	1	-	690472-1	STRIPPER		19	
-	-	-	-	-	-	-		18	
-	-	1	-	-	1338684-1	HOLDER, SHEAR, NO-CUT		17	
-	-	-	-	-	-	-		16	
-	-	-	-	-	-	-		15	
-	-	-	-	-	-	-		14	
-	-	-	-	-	-	-		13	
1	1	1	1	1	3-22280-3	SPRING, COMPRESSION		12	
1	1	1	1	1	356885-4	STOP, SHEAR		11	
1	1	-	1	1	1320921-1	SHEAR HOLDER, FRONT, CUT		10	
1	1	1	1	1	454276-1	FLOATING SHEAR, FRONT		9	
2	2	1	1	1	1633134-5	ANVIL, COMBINATION .110		8	
1	1	1	1	1	5-240641-3	SPACER		7	
-	-	-	-	-	-	-		6	
1	1	1	1	1	3-455889-6	DEPRESSOR, SHEAR		5	
1	1	1	1	1	238011-4	BLOCK, CRIMPER SPACER		4	
2	2	1	1	1	7-456134-5	CRIMPER, INSULATION F PREMIUM		3	
1	1	1	1	1	455888-5	SPACER, CRIMPER		2	
2	2	1	1	1	2-456408-0	CRIMPER, WIRE PREMIUM		1	
6	-72	-71	-6	-2	-1	PART NO	DESCRIPTION	ITEM NO	
DWN D. PROUSE 23MAR2006						tyco Electronics Tyco Electronics Harrisburg, PA 17105-3608			
APVD M. CLIFFORD 23MAR2006						NAME			
PRODUCT SPEC									
APPLICATION SPEC									
See Table						SIZE			
WEIGHT						A 00779			
CUSTOMER DRAWING						DRAWING NO			
						SCALE			
						SHEET			
						OF			
						REV			
						RESTRICTED TO			

Mouser Electronics

Authorized Distributor

Click to View Pricing, Inventory, Delivery & Lifecycle Information:

[TE Connectivity:](#)

[1528637-1](#)