


AMP 4805 REV 31MAR2000

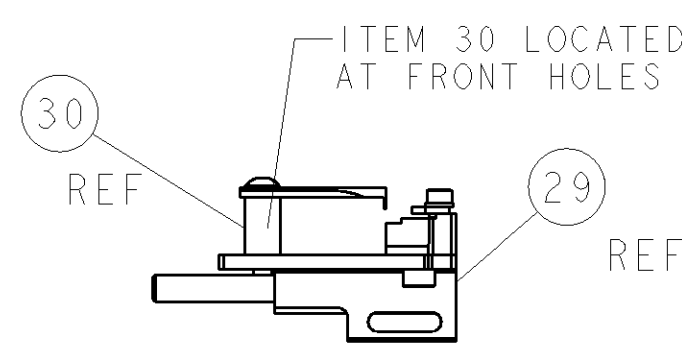
THIS DRAWING IS UNPUBLISHED.		RELEASED FOR PUBLICATION		20
(C) COPYRIGHT 20 BY TYCO ELECTRONICS CORPORATION. ALL RIGHTS RESERVED.				
PART NUMBER	REV	TERMINATOR	FEED TYPE	DESCRIPTION
1528624-1	B	LEADMAKER	MECH POST FEED	CUTS CARRIER
1528624-2	B	BENCH	MECH PRE FEED	CUTS CARRIER
1528624-6	B	LEADMAKER	MECH POST FEED	CONTINUOUS CARRIER
7-1528624-1	B	LEADMAKER	MECH POST FEED	-1 AND SPARE PARTS
7-1528624-2	B	BENCH	MECH PRE FEED	-2 AND SPARE PARTS
7-1528624-6	B	LEADMAKER	MECH POST FEED	-6 AND SPARE PARTS
7-1528624-7	A	-	-	SPARE PARTS KIT

[illegible]

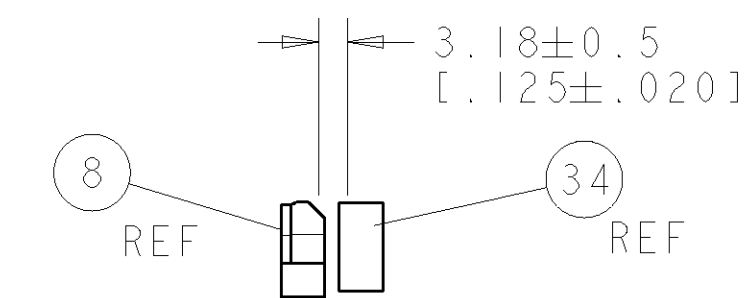
1. RECOMMENDED SPARE PARTS.
2. GREASE RAM, CAM, CAM FOLLOWER AND FEED ROD LIGHTLY.
3. CERTAIN TERMINALS REQUIRE LUBRICATION. REFER TO THE APPLICATOR INSTRUCTION SHEET FOR MORE INFORMATION.
4. LUBRICATE DAILY PER THE APPLICATOR INSTRUCTION SHEET SUPPLIED WITH THE APPLICATOR.
5. GRIND TO LENGTH AT ASSEMBLY.
6. WHEN CHANGING TERMINALS, ADJUST STRIP GUIDE ACCORDINGLY.

VIEW B ROTATED 180°

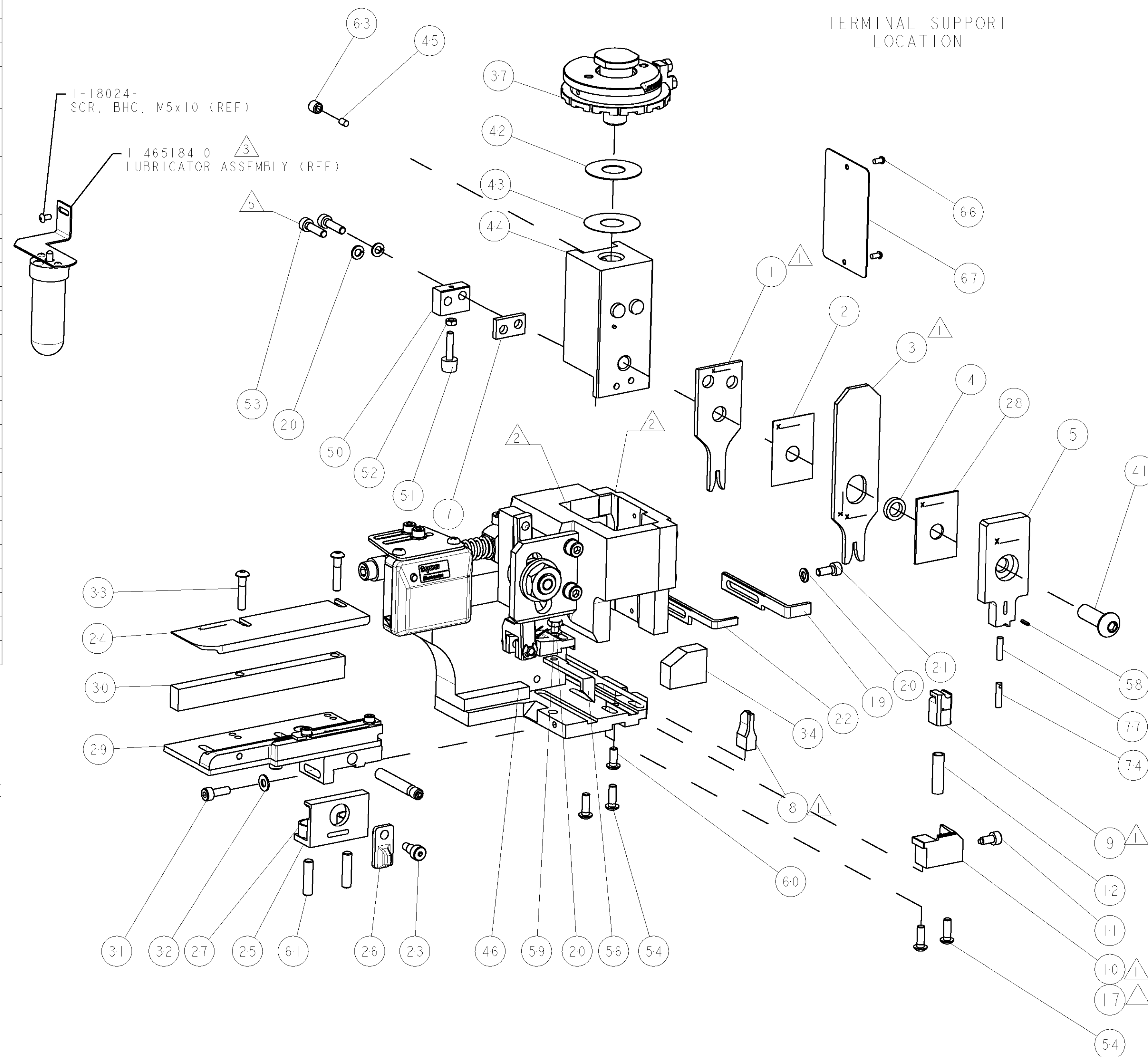
POST-FEED 40mm STROKE	POST-FEED 30mm STROKE	PRE-FEED 30mm STROKE	PRE-FEED 40mm STROKE

AMP 4805 REV 31MAR2000

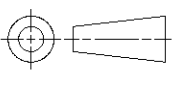
FEED TRACK POSITION GUIDE BY WIRE BARREL



TERMINAL SUPPORT
LOCATION



-	-	-	-	-	-	-	-	-	84
-	-	-	-	-	-	-	-	-	83
-	-	-	-	-	-	-	-	-	82
-	-	-	-	-	-	-	-	-	81
-	-	-	-	-	-	-	-	-	80
-	-	-	-	-	-	-	-	-	79
-	-	-	-	-	-	-	-	-	78
-	I	I	I	I	I	I	I-22278-0	SPRING, COMPRESSION	77
-	-	-	-	-	-	-	-	-	76
-	-	-	-	-	-	-	-	-	75
-	I	I	I	I	I	I	854769-I	HOLDER, INS	74
-77	-76	-72	-71	-6	-2	-1	PART NO	DESCRIPTION	ITEM NO

SET UP GAGE 458637-3							LOC A	DIST 66	REVISIONS			
							P	LTR	DESCRIPTION	DATE	OWN	APVD
								B	ECR-06-007877	30MAR2006	LG	TE
-	-	-	-	-	-	-	-	-			73	
-	-	-	-	-	-	-	-	-			72	
-	I	I	I	I	I	I	I	1338705-1	DOCUMENTATION PACKAGE		71	
-	-	-	-	-	-	-	-	-			70	
-	-	-	-	-	-	-	-	-			69	
-	-	-	-	-	-	-	-	-			68	
-	I	I	I	I	I	I	I	461264-5	PLATE, IDENTIFICATION		67	
-	2	2	2	2	2	2	2	21017-2	SCREW, DRIVE		66	
-	-	-	-	-	-	-	-	-			6	
-	-	-	-	-	-	-	-	-			64	
-	I	I	I	I	I	I	I	3-18031-0	SCR, SET, CUP POINT M6 X 6.0		63	
-	-	-	-	-	-	-	-	-			62	
-	2	2	2	2	2	2	2	2-18032-5	SCR, SET, FLT POINT M5 X 20.0		61	
-	I	I	I	I	I	I	I	18024-7	SCR, BTN SKT HD CAP (M4 X 10.0)		60	
-	I	I	I	I	I	I	I	5-18022-2	SCR, HEX HD CAP M4 X 8.0		59	
-	I	I	I	I	I	I	I	21028-2	PIN, SLOTTED SPRING .062 X .250		58	
-	-	-	-	-	-	-	-	-			57	
-	I	I	I	I	I	I	I	1338685-1	PAWL, FEED		56	
-	-	-	-	-	-	-	-	-			55	
-	4	4	4	4	4	4	4	18024-8	SCR, BTN SKT HD CAP (M4 X 12.0)		54	
-	2	2	2	2	2	2	2	1-18023-3	SCR, SKT HD CAP M4 X 16.0		53	
-	I	I	I	I	I	I	I	18030-1	NUT, HEX, REG M3		52	
-	I	I	I	I	I	I	I	811242-5	BUMPER, HOLD DOWN		51	
-	I	I	I	I	I	I	I	690753-2	SPACER, TONKER		50	
-	I	I	I	I	I	I	I	18024-3	SCR, BTN SKT HD CAP (M3 X 10.0)		49	
-	-	I	-	-	I	-	-	1338675-1	CAM, UNIVERSAL PRE FEED		48	
-	I	-	I	-	I	-	-	1338676-1	CAM, UNIVERSAL POST-FEED		47	
-	I	I	I	I	I	I	I	1320999-3	APPLICATOR SUBASSEMBLY, HDI		46	
-	I	I	I	I	I	I	I	690191-I	PLUG,NYLON		45	
-	I	I	I	I	I	I	I	1338660-1	RAM		44	
-	I	I	I	I	I	I	I	690125-1	SHIM SUB-ASSY		43	
-	I	I	I	I	I	I	I	469367-9	SHIM		42	
-	I	I	I	I	I	I	I	2-18024-6	SCR, BTN SKT HD CAP (M8 X 25.0)		41	
-	-	-	-	-	-	-	-	-			40	
-	-	-	-	-	-	-	-	-			39	
-	-	-	-	-	-	-	-	-			38	
-	I	I	I	I	I	I	I	879103-2	DISC, ADJUSTABLE GEITNER		3	
-	-	-	-	-	-	-	-	-			36	
-	-	-	-	-	-	-	-	-			35	
-	I	I	I	I	I	I	I	1320934-1	SUPPORT, TERMINAL		34	
-	2	2	2	2	2	2	2	1-18024-0	SCR, BTN SKT HD CAP (M4 X 20.0)		33	
-	I	I	I	I	I	I	I	18027-2	WASHER, FLAT, REG M4		32	
-	I	I	I	I	I	I	I	1-18023-2	SCR, SKT HD CAP M4 X 12.0		31	
-	I	I	I	I	I	I	I	1320908-1	SPACER, STRIP GUIDE		30	
-	I	I	I	I	I	I	I	1633073-3	STRIP GUIDE ASSEMBLY		29	
-	I	I	I	I	I	I	I	1-455888-0	SPACER, CRIMPER		28	
-	2	2	2	2	2	2	2	1-22284-0	SPRING, COMPRESSION		27	
-	I	I	I	I	I	I	I	356835-1	LEVER, DRAG RELEASE		26	
-	I	I	I	I	I	I	I	240792-1	DRAG, TERMINAL		25	
-	I	I	I	I	I	I	I	1320928-1	PLATE, STRIP GUIDE		24	
-	I	I	I	I	I	I	I	980371-4	SCR, SKT HD SHLDR 5.0 DIA X 6.0		23	
-	I	-	I	-	I	-	-	690472-2	STRIPPER		22	
-	I	-	I	-	I	-	-	1-18023-1	SCR, SKT HD CAP M4 X 10.0		21	
-	4	4	4	4	4	4	4	18025-2	WASHER, SPRG LOCK, REG M4		20	
-	-	I	-	-	I	-	-	690472-1	STRIPPER		19	
-	-	-	-	-	-	-	-	-			18	
-	I	-	-	-	I	-	-	1338684-1	SHEAR HOLDER, FRONT		17	
-	-	-	-	-	-	-	-	-			16	
-	-	-	-	-	-	-	-	-			15	
-	-	-	-	-	-	-	-	-			14	
-	-	-	-	-	-	-	-	-			13	
-	I	I	I	I	I	I	I	3-22280-3	SPRING, COMPRESSION		12	
-	I	I	I	I	I	I	I	356885-4	STOP, SHEAR		11	
-	-	-	I	-	-	I	-	1320921-1	SHEAR HOLDER, FRONT, CUT		10	
-	I	I	I	I	I	I	I	462006-1	FLOATING SHEAR, FRONT		9	
I	2	2	2	I	I	I	I	1633132-5	ANVIL, COMBINATION .090		8	
-	I	I	I	I	I	I	I	5-240641-2	SPACER		7	
-	-	-	-	-	-	-	-	-			6	
-	I	I	I	I	I	I	I	854772-1	DEPRESSOR, SHEAR		5	
-	I	I	I	I	I	I	I	238011-9	BLOCK, CRIMPER SPACER		4	
I	2	2	2	I	I	I	I	4-683453-7	CRIMPER, INSULATION PREMIUM		3	
-	I	I	I	I	I	I	I	455888-1	SPACER, CRIMPER		2	
I	2	2	2	I	I	I	I	4-456406-1	CRIMPER, WIRE PREMIUM		1	
-77	-76	-72	-71	-6	-2	-1	PART NO		DESCRIPTION		ITEM NO	
TOLERANCES UNLESS OTHERWISE SPECIFIED: DIMENSIONS: mm [IN]							OWN B. HIGMAN CHK B. HIGMAN APVD T. ELGIN 25JAN2006		tyco Electronics Tyco Electronics Harrisburg, PA 17105-3608			
							PRODUCT SPEC - APPLICATION SPEC See Table		NAME SIDE FEED HDI APPLICATOR			
MATERIAL -							WEIGHT -		SIZE A			
							CAGE CODE 00779		DRAWING NO C=1528624			
							CUSTOMER DRAWING		RESTRICTED TO SCALE 3:5 SHEET 1 OF 1 REV			

Mouser Electronics

Authorized Distributor

Click to View Pricing, Inventory, Delivery & Lifecycle Information:

[TE Connectivity:](#)

[1528624-6](#)