
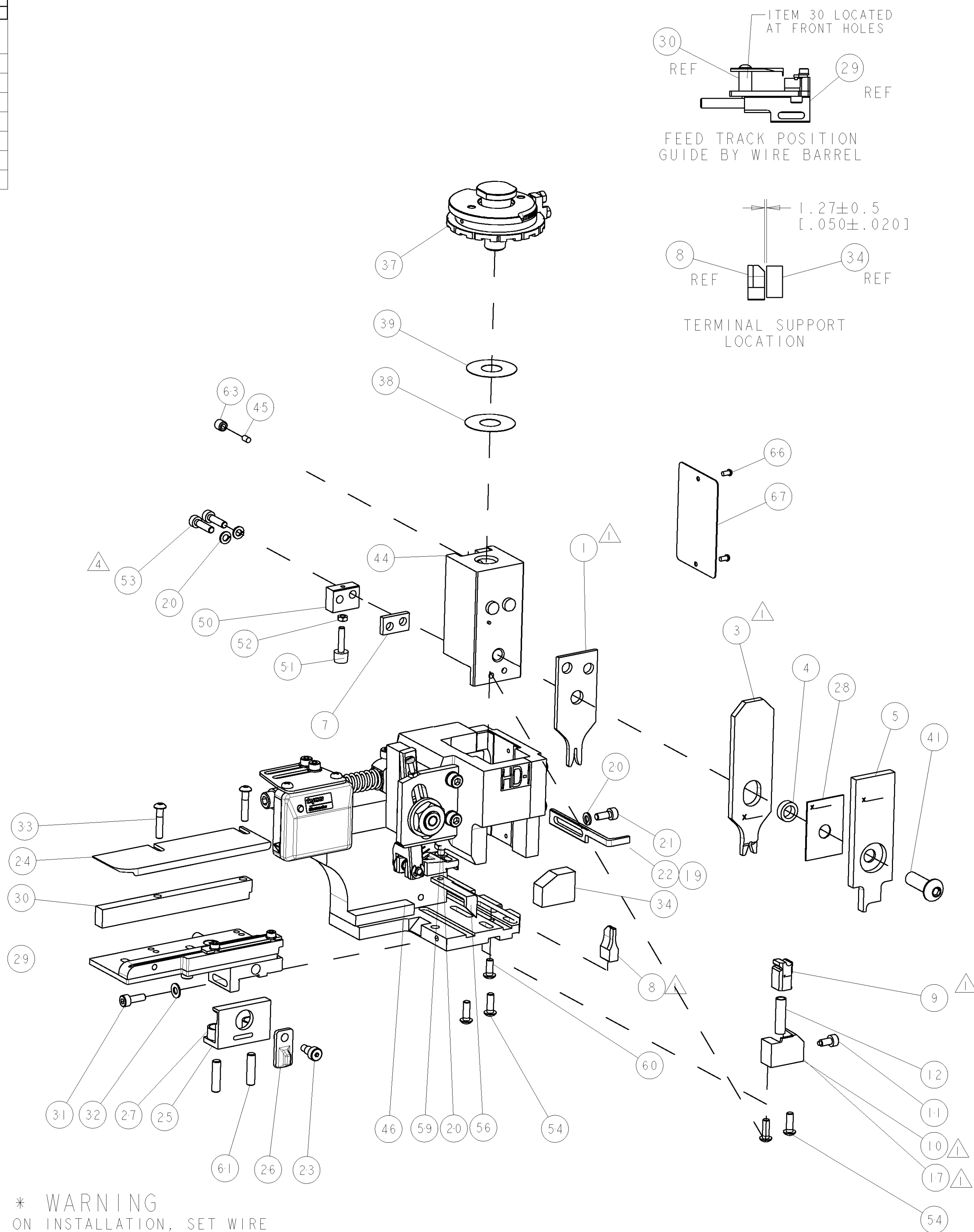
 RECOMMENDED SPARE PARTS

2. GREASE RAM, CAM, CAM FOLLOWER AND FEED ROD LIGHTLY





3. LUBRICATE DAILY PER THE APPLICATOR INSTRUCTION SHEET SUPPLIED WITH THE APPLICATOR

 4. CUT TO LENGTH AT ASSEMBLY



\* WARNING  
ON INSTALLATION, SET WIRE  
DISC TO LARGEST WIRE SIZE  
SETTING. USE OF SETTINGS  
BELOW MIN. REQUIRED CRIMP  
HEIGHT SETTING WILL CAUSE  
DAMAGE TO CRIMP TOOLING.


VIEW B ROTATED 180°

POST-FEED 40mm STROKE	POST-FEED 30mm STROKE	PRE-FEED 30mm STROKE	PRE-FEED 40mm STROKE
 <p>Diagram showing the assembly for Post-Feed 40mm Stroke. A vertical plate (47) is attached to a horizontal plate (49) using a screw.</p>	 <p>Diagram showing the assembly for Post-Feed 30mm Stroke. A vertical plate (47) is attached to a horizontal plate (49) using a screw.</p>	 <p>Diagram showing the assembly for Pre-Feed 30mm Stroke. A vertical plate (48) is attached to a horizontal plate (49) using a screw.</p>	 <p>Diagram showing the assembly for Pre-Feed 40mm Stroke. A vertical plate (48) is attached to a horizontal plate (49) using a screw.</p>

-	-	-	-	-	-	-	-	-	84
-	-	-	-	-	-	-	-	-	83
-	-	-	-	-	-	-	-	-	82
-	-	-	-	-	-	-	-	-	81
-	-	-	-	-	-	-	-	-	80
-	-	-	-	-	-	-	-	-	79
-	-	-	-	-	-	-	-	-	78
-	-	-	-	-	-	-	-	-	77
-	-	-	-	-	-	-	-	-	76
-	-	-	-	-	-	-	-	-	75
-	-	-	-	-	-	-	-	-	74
-77	-76	-72	-71	-6	-2	-1	PART NO	DESCRIPTION	ITEM NO

SET UP GAGE 458637-3	LOC	DIST	REVISONS					
	A	66	TP	LTR	DESCRIPTION	DATE	DWN	APVD
			A	SEE	ECO-05-012632	31OCT2005	LJL	MC
			B	ECR-07-011323		14MAY2007	MY	TE
			C	ECR-07-026589		06NOV2007	MY	TE

[illegible]

<small>THIS DRAWING IS A CONTROLLED DOCUMENT AND ITS RELEASE OR DISSEMINATION TO UNAUTHORIZED PERSONS IS PROHIBITED. IT IS TO BE USED TO FABRICATE AND/OR ASSEMBLE THE PRODUCT OR SERVICE SPECIFIED BY THE CUSTOMER. IT IS THE PROPERTY OF TYCO ELECTRONICS AND IS TO BE RETURNED TO TYCO ELECTRONICS UPON COMPLETION OF THE PROJECT.</small>		DWN 06-Nov-07 CHK L LOFHOUSE -		<b>tyco</b> <b>Electronics</b> Tyco Electronics Harrisburg, PA 17105-3608		NO
DIMENSIONS: mm (IN)		TOLERANCES UNLESS OTHERWISE SPECIFIED: 0 PLC ± 1 PLC ± 2 PLC ± 3 PLC ± 4 PLC ± ANGLES ±		APVD 06-Nov-07 F BACKHURST PRODUCT SPEC - APPLICATION SPEC See Table		NAME
				FINE ADJUST SIDE FEED HDI APPLICATOR -		
MATERIAL -		FINISH -		SIZE CAGE CODE DRAWING NO A1 00779 C=1528571		RESTRICTED TO -
		WEIGHT -		SCALE 3:5 SHEET 1 OF 1 CUSTOMER DRAWING		REV C

# Mouser Electronics

Authorized Distributor

Click to View Pricing, Inventory, Delivery & Lifecycle Information:

[TE Connectivity:](#)

[1528571-2](#)