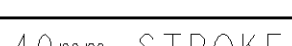
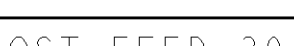
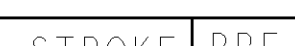
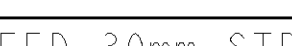
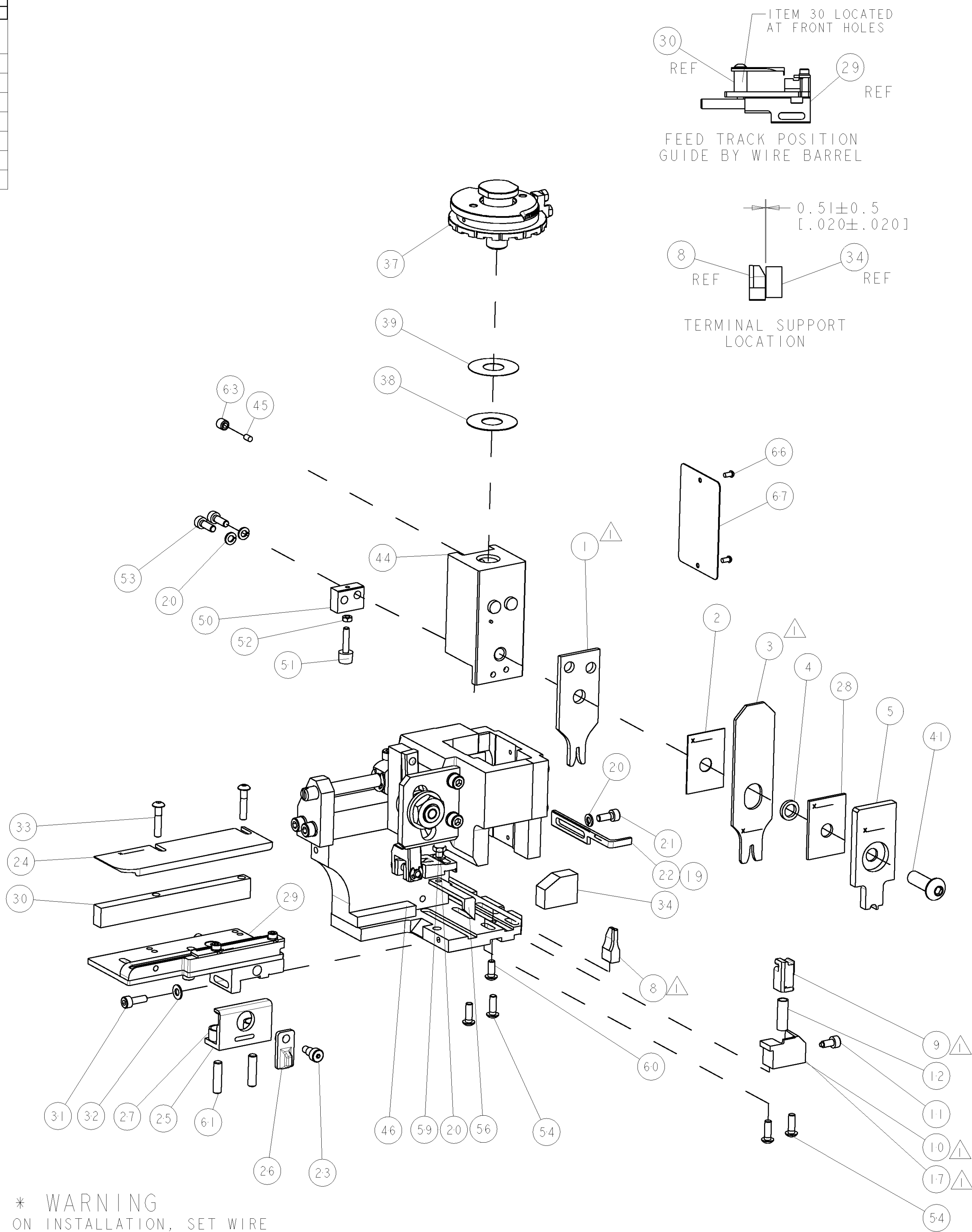


AMP 4805 REV 31MAR2000[illegible]

VIEW B ROTATED 180°

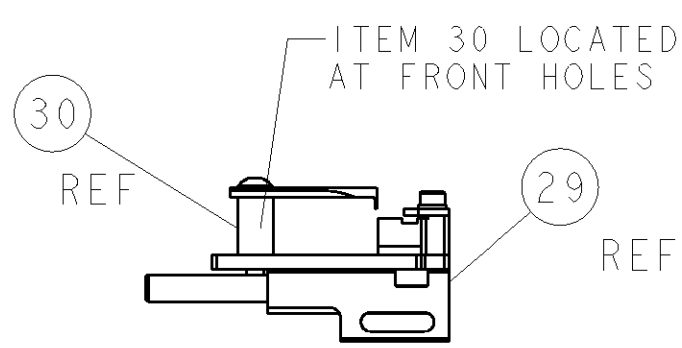
POST-FEED 40mm STROKE	POST-FEED 30mm STROKE	PRE-FEED 30mm STROKE	PRE-FEED 40mm STROKE
			

AMP 4805 REV 31MAR2000

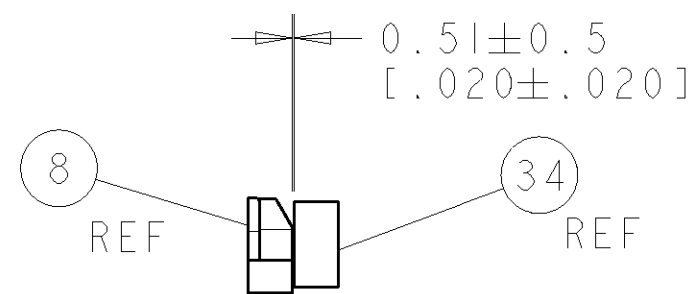


* WARNING
ON INSTALLATION, SET WIRE
DISC TO LARGEST WIRE SIZE
SETTING. USE OF SETTINGS
BELOW MIN. REQUIRED CRIMP
HEIGHT SETTING WILL CAUSE
DAMAGE TO CRIMP TOOLING.

-	-	-	-	-	-	-	-	-	84
-	-	-	-	-	-	-	-	-	83
-	-	-	-	-	-	-	-	-	82
-	-	-	-	-	-	-	-	-	81
-	-	-	-	-	-	-	-	-	80
-	-	-	-	-	-	-	-	-	79
-	-	-	-	-	-	-	-	-	78
-	-	-	-	-	-	-	-	-	77
-	-	-	-	-	-	-	-	-	76
-	-	-	-	-	-	-	-	-	75
-	-	-	-	-	-	-	-	-	74
-77	-76	-72	-71	-6	-2	-1	PART NO	DESCRIPTION	ITEM NO



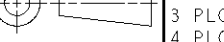
FEED TRACK POSITION GUIDE BY WIRE BARREL



TERMINAL SUPPORT LOCATION

SET UP GAGE
458637-3

[illegible][illegible]

THIS DRAWING IS A PRELIMINARY DESIGN AND NOT TO BE USED FOR CONSTRUCTION OR FABRICATION WITHOUT THE WRITTEN APPROVAL OF THE DESIGNER. ANY CHANGES SHOULD BE CONTACTED FOR THE LATEST REVISION.				DWG NO. 07JUN2005 M. CLIFFORD		tyco <i>Electronics</i>		Tyco Electronics Harrisburg, PA. 17105-3608				
DIMENSIONS: mm [IN]		TOLERANCES UNLESS OTHERWISE SPECIFIED:		REVISED BY: 07JUN2005 F. BACKHURST		NAME		FINE ADJUST SIDE FEED HDI APPLICATOR				
		0 PLC ± 1 PLC ± 2 PLC ± 3 PLC ± 4 PLC ± ANGLE ± °		PRODUCT SPEC		SIZE		CAGE CODE	DRAWING NO.	RESTRICTED TO		
				APPLICATION SPEC								
				See Table								
MATERIAL		FINISH		WEIGHT		A		00779	C=1528550			
				CUSTOMER DRAWING				SCALE	3:5	SHEET	OF	REV A

Mouser Electronics

Authorized Distributor

Click to View Pricing, Inventory, Delivery & Lifecycle Information:

[TE Connectivity:](#)

[1528550-2](#)