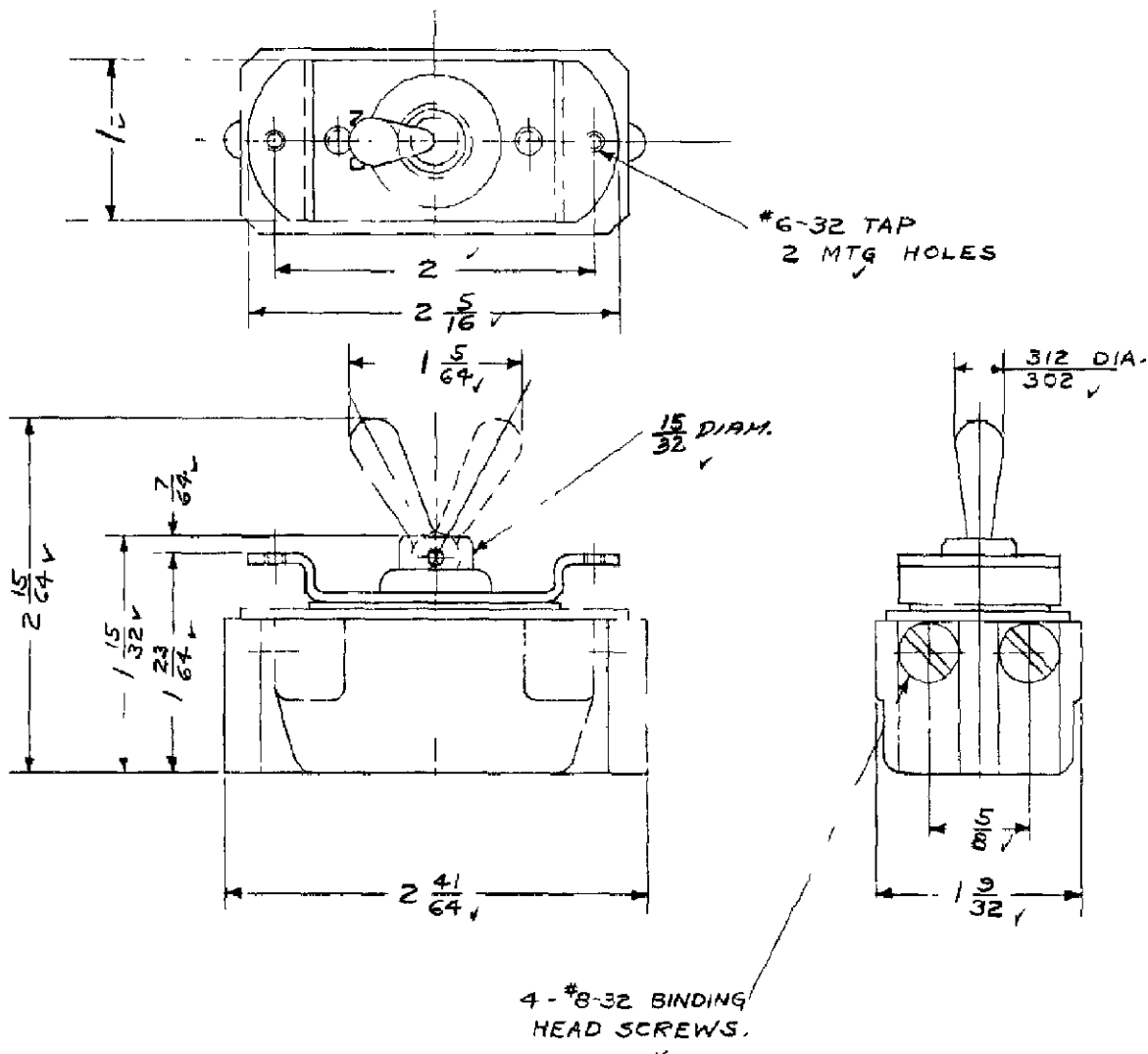


**A 90-348**

RAW MAT SPEC WITH  
PART NO. AND AMOUNT REQ'D.



**BULLETIN**

**DIMENSIONS FOR 20 AMP, 250V, 3 HOLE MTG. TOOL HANDLE SWITCH**

A	2 7/16 DIA. WAS 1 15/32 DIA.	W.H.K. 3076 1-245 W.H.K.	DR E. R. Leonard 7/20/40	FIRST ASSEM. WHERE LISTED D 90-342
B	1 5/32 DIA. WAS 2 7/16 DIA.	DEV. 3140-10A148 W.H.K. 3076 1-245 W.H.K.	CHEK J. Raeh 10/4/40	SUP S. NON-INTERCHANGEABLE
C		DEV. 3140-10A237	APP. Geo. J. J. J. 10/5/40	SUP D BY NON-INTERCHANGEABLE
D				SURFACE COATING
E				DO NOT SCALE DRAWING. WORK ACCORDING TO DIMENSIONS.
F				STANDARD TOLERANCES 80-875 APPLY TO DIMENSIONS FOR WHICH TOLERANCES ARE NOT SPECIFIED.
			ORDER NO. DEV. 4041-10	SCALE 1" = 1"

CUTLER-HAMMER, INC. MILWAUKEE  NEW YORK

**A 90-348**

# Mouser Electronics

Authorized Distributor

Click to View Pricing, Inventory, Delivery & Lifecycle Information:

[TE Connectivity:](#)

[1520231-2](#)