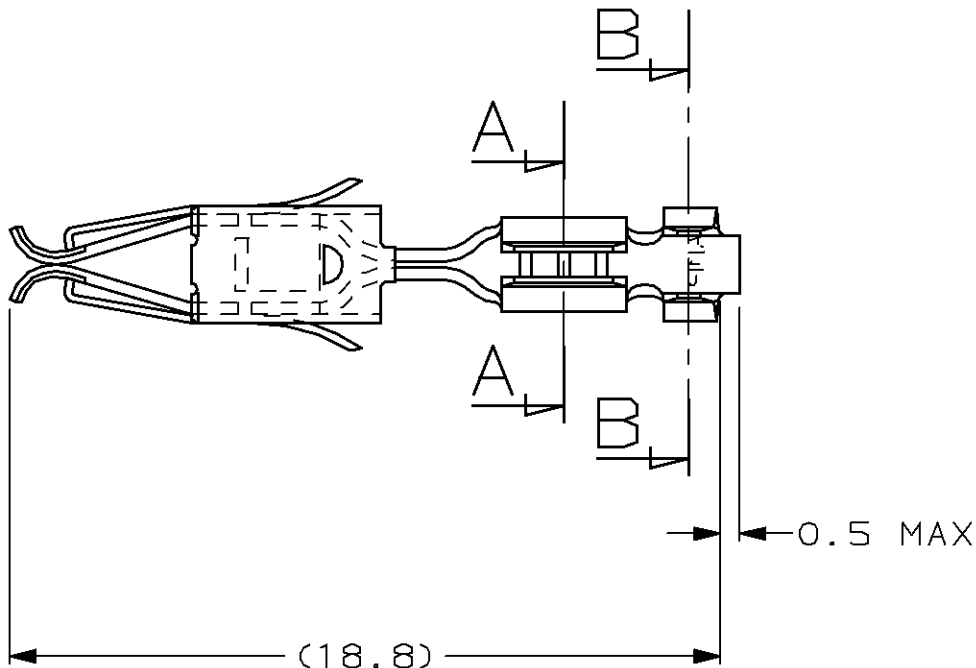
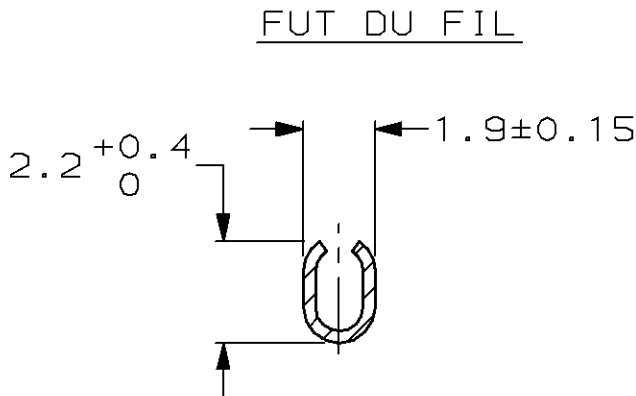


LOC	DIST	REVISIONS				
		P	LTR REV	DESCRIPTION MODIFICATIONS	DATE	APVD APP.
F	7		C	CARTOUCHE DU PLAN CHANGE	24-MAY-96	RP

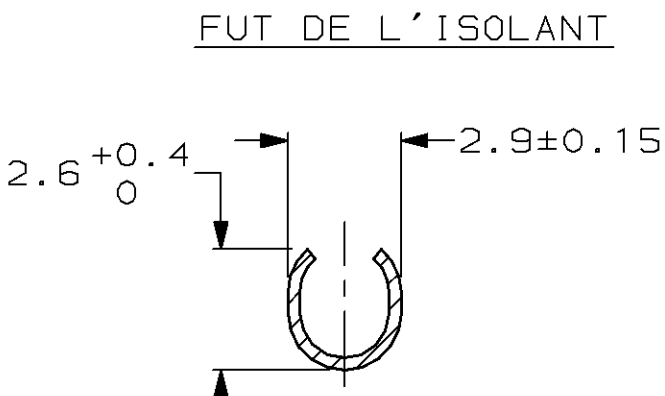


NOTE:

1 LES PIECES EN VRAC DOIVENT SATISFAIRE AUX SPECIFICATIONS APPLICABLES AUX PRODUITS EN BANDE AVEC CES CARACTERISTIQUES SUPPLEMENTAIRES



SECTION A-A



SECTION B-B

144795-2	BRONZE	DORE	144431-3
144795-1	BRONZE	ETAME	144431-1
REF. VRAC	MATIERE	FINITION	REF. BANDE

THIS DRAWING IS A CONTROLLED DOCUMENT FOR AMP INCORPORATED. IT IS SUBJECT TO CHANGE AND THE CONTROLLING ENGINEERING ORGANIZATION SHOULD BE CONTACTED FOR THE LATEST REVISION. CE PLAN EST UN DOCUMENT CONTRÔLÉ PAR AMP INCORPORATED. IL EST SUSCEPTIBLE D'ÊTRE REVISÉ. CONTACTER LE SERVICE TECHNIQUE D'AMP DE FRANCE POUR OBTENIR LA DERNIÈRE RÉVISION.		OWN/DESSINE Remi PATIN 24-MAY-96	<b>AMP</b> AMP DE FRANCE 95301 PONTOISE	
DIMENSIONS: mm		CHK/VERIFIE JP.PICAUD 03-JUN-96		
TOLERANCES UNLESS OTHERWISE SPECIFIED: TOLERANCES NON SPECIFIEES (SUIV NB DE DECIMALES):		APVD/APPROUVE JJ.REVIL 03-JUN-96	NAME TITRE	
		PRODUCT SPEC SPEC. PRODUIT	CONTACT JUNIOR POWER TIMER (VRAC)	
MATERIAL MATIERE		APPLICATION SPEC SPEC. APPLICATION		
FINISH FINITION		WEIGHT MASSE APPROX.	SIZE FORMAT	CAGE CODE
			A3	00779
			DRAWING NO No PLAN	C=144795
		CUSTOMER DRAWING/PLAN CLIENT	UNIQUEMENT POUR REFERENCE	SCALE Echelle
			5:1	SHEET FEUILLE
			1 OF 1 DE 1	REV C

# Mouser Electronics

Authorized Distributor

Click to View Pricing, Inventory, Delivery & Lifecycle Information:

[TE Connectivity:](#)

[144795-1](#)