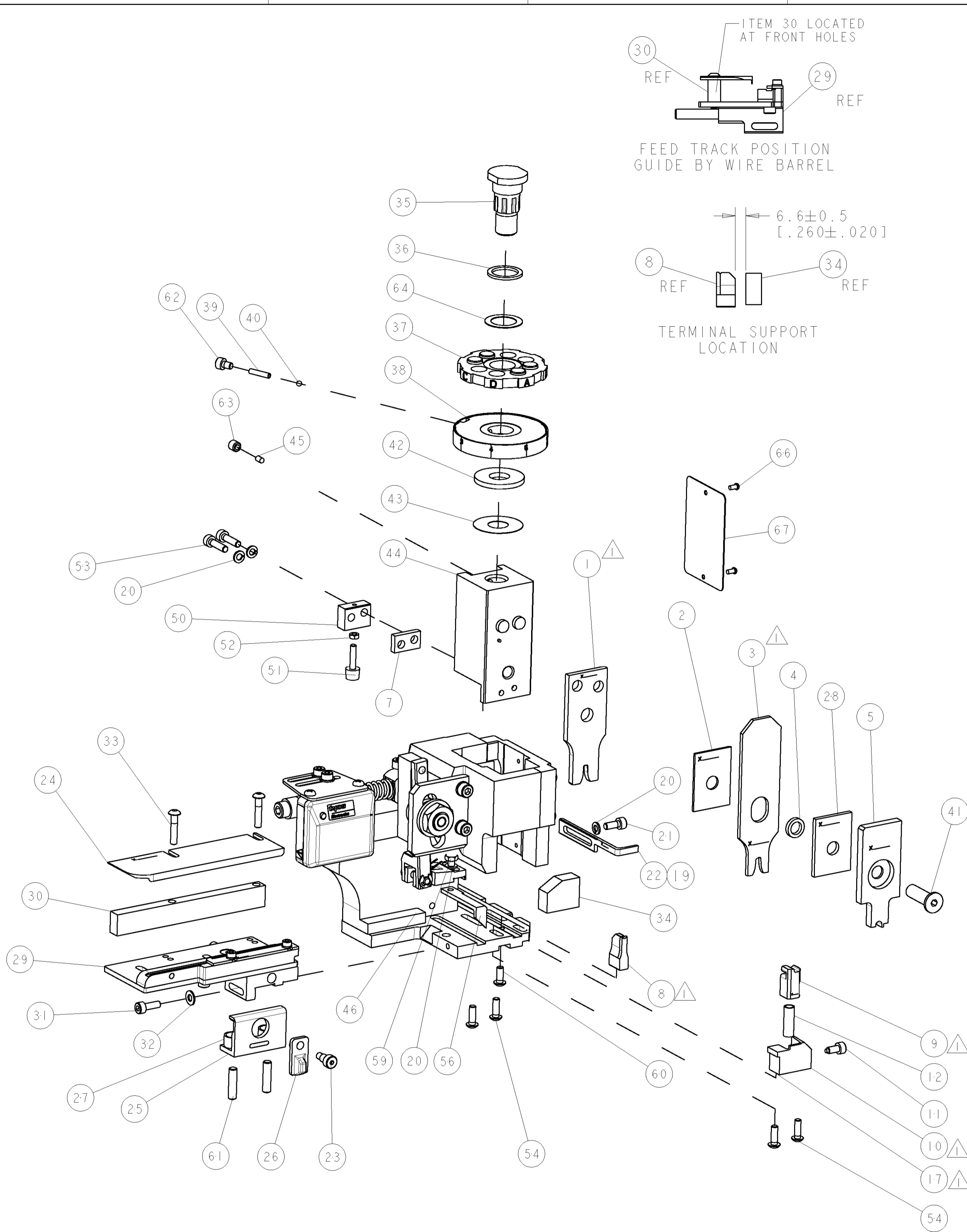


△ RECOMMENDED SPARE PARTS  
2. GREASE RAM, CAM, CAM FOLLOWER AND FEED ROD LIGHTLY  
3. LUBRICATE DAILY PER THE APPLICATOR INSTRUCTION  
SHEET SUPPLIED WITH THE APPLICATOR

△ ALL CRIMP DATA SUPPLIED BY TERMINAL MANUFACTURER.



-	-	-	-	-	-	-	-	-	84
-	-	-	-	-	-	-	-	-	83
-	-	-	-	-	-	-	-	-	82
-	-	-	-	-	-	-	-	-	81
-	-	-	-	-	-	-	-	-	80
-	-	-	-	-	-	-	-	-	79
-	-	-	-	-	-	-	-	-	78
-	-	-	-	-	-	-	-	-	77
-	-	-	-	-	-	-	-	-	76
-	-	-	-	-	-	-	-	-	75
-	-	-	-	-	-	-	-	-	74
-77	-76	-72	-71	-6	-2	-1	PART NO	DESCRIPTION	ITEM NO

SET UP GAGE 458637-3						LOC A	DIST 66	REVIEWS			
						T	LTR	DESCRIPTION	DATE	DWN	APVD
						A		SEE ECO-05-009019		LJL	FB
						B		SEE ECO-05-011448	21Sep05	LJL	FB
-	-	-	-	-	-	-	-	-			73
-	-	-	-	-	-	-	-	-			72
I	I	I	I	I	I	1338705-1	DOCUMENTATION PACKAGE				71
-	-	-	-	-	-	-	-	-			70
-	-	-	-	-	-	-	-	-			69
-	-	-	-	-	-	-	-	-			68
I	I	I	I	I	I	461264-1	PLATE, IDENTIFICATION				67
2	2	2	2	2	2	21017-2	SCREW, DRIVE				66
-	-	-	-	-	-	-	-	-			65
I	I	I	I	I	I	986950-1	WASHER, FLAT PRECISION				64
I	I	I	I	I	I	3-18031-0	SCR, SET, CUP POINT M6 X 6.0				63
I	I	I	I	I	I	18023-9	SCR, SKT HD CAP M4 X 6.0				62
2	2	2	2	2	2	2-18032-5	SCR, SET, FLT POINT M5 X 20.0				61
I	I	I	I	I	I	18024-7	SCR, BTN SKT HD CAP (M4 X 10.0)				60
I	I	I	I	I	I	5-18022-2	SCR, HEX HD CAP M4 X 8.0				59
-	-	-	-	-	-	-	-	-			58
-	-	-	-	-	-	-	-	-			57
I	I	I	I	I	I	1338685-1	PAWL, FEED				56
-	-	-	-	-	-	-	-	-			55
4	4	4	4	4	4	18024-8	SCR, BTN SKT HD CAP (M4 X 12.0)				54
2	2	2	2	2	2	1-18023-3	SCR, SKT HD CAP M4 X 16.0				53
I	I	I	I	I	I	18030-1	NUT, HEX, REG M3				52
I	I	I	I	I	I	811242-5	BUMPER, HOLD DOWN				51
I	I	I	I	I	I	690753-2	SPACER, TONKER				50
I	I	I	I	I	I	18024-3	SCR, BTN SKT HD CAP (M3 X 10.0)				49
I	-	-	I	-	-	1338675-1	CAM, UNIVERSAL PRE FEED				48
-	I	I	-	I	-	1338676-1	CAM, UNIVERSAL POST-FEED				47
I	I	I	I	I	I	1320999-3	APPLICATOR SUBASSEMBLY, HDI				46
I	I	I	I	I	I	690191-1	PLUG,NYLON				45
I	I	I	I	I	I	1338660-1	RAM				44
I	I	I	I	I	I	690125-1	SHIM SUB-ASSY				43
I	I	I	I	I	I	690124-1	WASHER, RAM (.115)				42
I	I	I	I	I	I	992285-2	SCR, LOW SKT HD CAP M8 X 25.0				41
I	I	I	I	I	I	23241-1	BALL, STEEL				40
I	I	I	I	I	I	2-22278-7	SPRING, COMPRESSION				39
I	I	I	I	I	I	1-1320922-1	DISC, ADJUST, INSULATION CRIMP				38
I	I	I	I	I	I	354777-1	WIRE DISC, ASSEMBLY				37
I	I	I	I	I	I	22480-5	SPRING, COMPRESSION				36
I	I	I	I	I	I	690212-1	POST, RAM				35
I	I	I	I	I	I	1320934-1	SUPPORT, TERMINAL				34
2	2	2	2	2	2	1-18024-0	SCR, BTN SKT HD CAP (M4 X 20.0)				33
I	I	I	I	I	I	18027-2	WASHER, FLAT, REG M4				32
I	I	I	I	I	I	1-18023-2	SCR, SKT HD CAP M4 X 12.0				31
I	I	I	I	I	I	1320908-6	SPACER, STRIP GUIDE				30
I	I	I	I	I	I	1633073-2	STRIP GUIDE ASSEMBLY				29
I	I	I	I	I	I	2-455888-4	SPACER, CRIMPER				28
2	2	2	2	2	2	1-22284-0	SPRING, COMPRESSION				27
I	I	I	I	I	I	356835-1	LEVER, DRAG RELEASE				26
I	I	I	I	I	I	240792-1	DRAG, TERMINAL				25
I	I	I	I	I	I	1320928-1	PLATE, STRIP GUIDE				24
I	I	I	I	I	I	980371-4	SCR, SKT HD SHLDR 5.0 DIA X 6.0				23
-	I	I	I	-	I	690472-2	STRIPPER				22
I	I	I	I	I	I	1-18023-1	SCR, SKT HD CAP M4 X 10.0				21
4	4	4	4	4	4	18025-2	WASHER, SPRG LOCK, REG M4				20
I	-	-	I	-	-	690472-1	STRIPPER				19
-	-	-	-	-	-	-	-	-			18
-	-	I	-	-	-	1338684-1	HOLDER, SHEAR, NO-CUT				17
-	-	-	-	-	-	-	-	-			16
-	-	-	-	-	-	-	-	-			15
-	-	-	-	-	-	-	-	-			14
-	-	-	-	-	-	-	-	-			13
I	I	I	I	I	I	5-22280-0	SPRING, COMPRESSION				12
I	I	I	I	I	I	356885-4	STOP, SHEAR				11
I	I	-	I	I	I	1320921-1	SHEAR HOLDER, FRONT, CUT				10
I	I	I	I	I	I	3-454276-2	FLOATING SHEAR, FRONT				9
2	2	I	I	I	I	5-1333225-0	ANVIL, COMBINATION				8
-	-	-	-	I	I	2-240641-4	SPACER				7
-	-	-	-	-	-	-	-	-			6
I	I	I	I	I	I	3-455889-6	DEPRESSOR, SHEAR				5
I	I	I	I	I	I	238011-4	BLOCK, CRIMPER SPACER				4
2	2	I	I	I	I	2-854830-5	CRIMPER, INSULATION SPECIAL				3
I	I	I	I	I	I	1-455888-1	SPACER, CRIMPER				2
2	2	I	I	I	I	4-1490019-8	CRIMPER, WIRE PREMIUM				1
6	-72	-71	-6	-2	-1	PART NO		DESCRIPTION		ITEM NO	
DRAWING DOCUMENT FOR YOUR REFERENCE. THIS ORGANIZATION IS NOT RESPONSIBLE FOR THE INFORMATION CONTAINED HEREIN. THE INFORMATION IS FOR INFORMATIONAL PURPOSES ONLY AND IS NOT TO BE USED FOR ANY OTHER PURPOSE. THE INFORMATION IS FOR INFORMATIONAL PURPOSES ONLY AND IS NOT TO BE USED FOR ANY OTHER PURPOSE.						DWN L LOFTHOUSE	21-Sep-05	tyco Electronics		Tyco Electronics Harrisburg, PA 17105-3608	
TOLERANCES UNLESS OTHERWISE SPECIFIED:						CHK F BACKHURST	21-Sep-05	NAME		SIDE FEED HDI APPLICATOR	
0 PLC ±.0005						PRODUCT SPEC		-		-	
1 PLC ±.0005						APPLICATION SPEC		-		-	
2 PLC ±.0005						See Table		-		-	
3 PLC ±.0005						WEIGHT		-		-	
4 PLC ±.0005						CUSTOMER DRAWING		-		-	
FINISH						SCALE		3:5		SHEET 1 OF 1 REV B	

# Mouser Electronics

Authorized Distributor

Click to View Pricing, Inventory, Delivery & Lifecycle Information:

[TE Connectivity:](#)

[1426561-1](#)