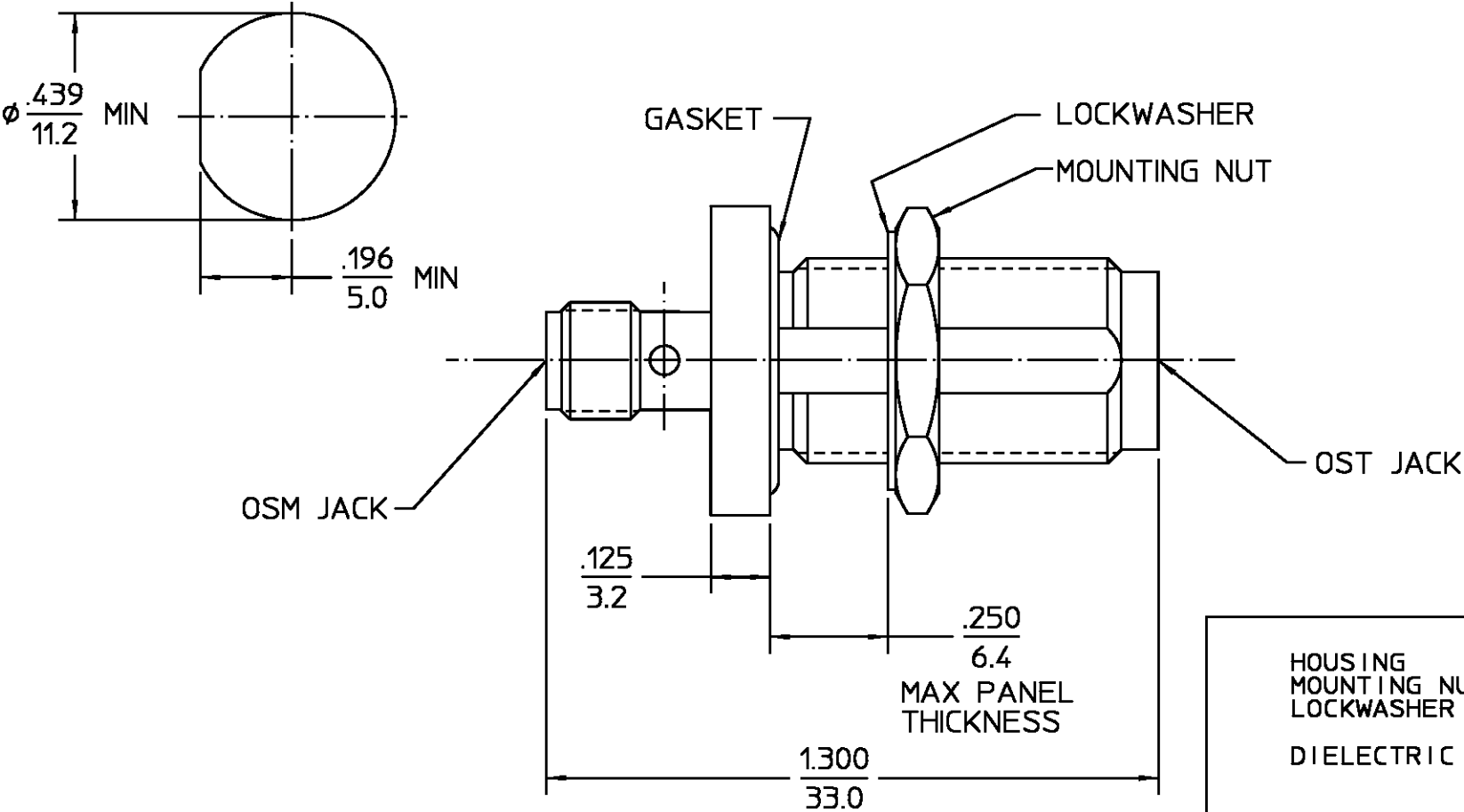


REVISIONS			
REV	DESCRIPTION	DATE	APPROVED
01 ₁	REVISED	K.L. 7-12-96	<i>PCV</i> 7/17/96

RECOMMENDED MOUNTING HOLE



HOUSING	STAINLESS STEEL PER	PASSIVATE PER
MOUNTING NUT	ASTM-A484 AND ASTM-	QQ-P-35
LOCKWASHER	A582, TYPE 303	
DIELECTRIC	TFE FLUOROCARBON	N/A
	PER ASTM-D-1457	
CENTER CONTACT	BERYLLIUM COPPER PER	GOLD PLATE PER
	ASTM-B-196 OR ASTM-B-197,	MIL-G-45204
	ALLOY C17300, CONDITION H	
GASKET	FLUOROCARBON RUBBER PER	N/A
	MIL-R-83248, TYPE 1,	
	CLASS 1	

COMPONENT	MATERIAL	FINISH
-----------	----------	--------

UNLESS OTHERWISE SPECIFIED DIMENSIONS ARE IN INCHES	DRAWN BY SWA	DATE 11-8-84
	CHECKED BY MLB	11-16-84
	APP'D BY DRG	11-23-84



M/A-COM, Inc.
Waltham, MA 02254

These drawings and specifications are the property of M/A COM Interconnect Div. and shall not be reproduced or copied or used in whole or in part as the basis for the manufacture or sale of item(s) without written permission.	USE ASSY PROCEDURE		TITLE OST JACK TO OSM JACK BULKHEAD FEED THROUGH	
	NO. A.P. <u>N/A</u>		SIZE B	CODE IDENT NO. 26805
			3784-2240-00	
			SCALE 3:1	REV 01 ₁

NOTES:

1. CAPTURED CENTER CONTACT $\frac{.XXX}{XX.X} = \frac{\text{in}}{\text{mm (REF)}}$

Mouser Electronics

Authorized Distributor

Click to View Pricing, Inventory, Delivery & Lifecycle Information:

[TE Connectivity:](#)

[3784 2240 00](#)