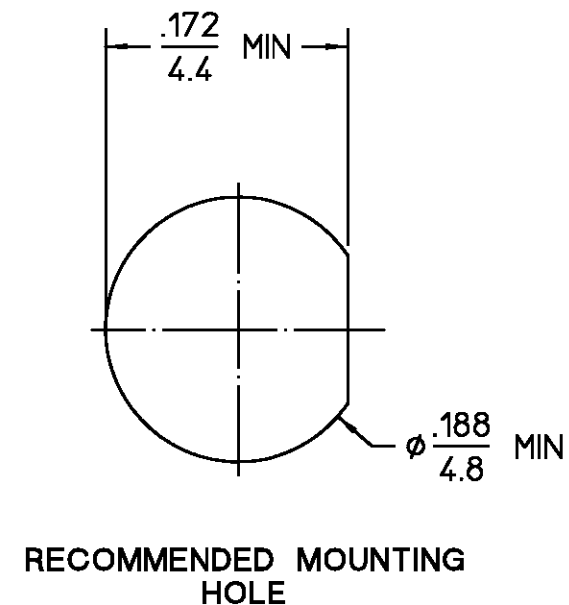


REVISIONS			
REV	DESCRIPTION	DATE	APPROVED
03 ₁	REVISED	8/2/96 8/8/96	<i>[Signature]</i>



NOTES:
1. CAPTURED CENTER CONTACT

.XXX = in
XX.X = mm (REF)

HOUSING MOUNTING NUT LOCKWASHER	STAINLESS STEEL PER ASTM-A484 AND ASTM- A582, TYPE 303	PASSIVATE PER QQ-P-35
DIELECTRIC	TFE FLUOROCARBON PER ASTM-D-1457	N/A
CENTER CONTACT	BERYLLIUM COPPER PER ASTM-B-196 OR ASTM-B-197, ALLOY C17300, CONDITION H	GOLD PLATE PER MIL-G-45204
COMPONENT	MATERIAL	FINISH
UNLESS OTHERWISE SPECIFIED DIMENSIONS ARE IN INCHES FRAC. DEC. ANGLES ± 1/64 ±.005 ± 1°		
THESE DRAWINGS AND SPECIFICATIONS ARE THE PROPERTY OF M/A COM INTERCONNECT DIV. AND SHALL NOT BE REPRODUCED OR COPIED OR USED IN WHOLE OR IN PART AS THE BASIS FOR THE MANUFACTURE OR SALE OF ITEM(S) WITHOUT WRITTEN PERMISSION.		
DRAWN BY KL DATE 12/2/70 CHECKED BY PRB 12/7/70 APP'D BY BWC 12/7/70		
AMP Incorporated 140 Fourth Avenue Waltham, MA 02451-7599		
TITLE "OSSM" BULKHEAD FEEDTHRU JACK RECEPTACLE - SOLDER POT TERMINAL		
USE ASSY PROCEDURE NO. A.P. N/A		
SIZE B	CODE IDENT NO. 26805	1056-0000-02
SCALE 8:1	SHEET 1 OF 1	
REV 03 ₁		

CUSTOMER DRAWING

AMP PART # 1045630-1
SHEET 1 OF 1 REV A

Mouser Electronics

Authorized Distributor

Click to View Pricing, Inventory, Delivery & Lifecycle Information:

[TE Connectivity:](#)

[1056-0000-02](#)