

SAFETY ORGANIZATION(S):
THIS FILTER HAS BEEN FORMALLY RECOGNIZED, CERTIFIED OR APPROVED BY THE LISTED AGENCY. THEREFORE, ALL TEST/REQUIREMENTS SPECIFIED IN THE LATEST REVISION OF THE FOLLOWING AGENCY STANDARDS HAVE BEEN MET.

UL RECOGNIZED
CSA CERTIFIED
VDE APPROVED (PENDING)

UL 1283
CSA 22.2, NO.0,0,4,8
VDE 565-3

OPERATING SPECIFICATIONS:
LINE VOLTAGE/CURRENT:
LINE FREQUENCY:
MAX. LEAKAGE CURRENT, EACH LINE TO GROUND
OPERATING AMBIENT TEMP. RANGE:
IN AN AMBIENT, T_a , HIGHER THAN 40°C, THE MAXIMUM OPERATING CURRENT, I_o , IS AS FOLLOWS:
 $I_o = I_r \sqrt{\frac{85-T_a}{45}}$

1 AMP., 120/250 VAC
1 AMP./40°C, 250 VAC
50-60Hz

.25 mA @ 120V 60 Hz
.48 mA @ 250V 50 Hz
-10°C TO +40°C @ RATED CURRENT, I_r

RELIABILITY SPECIFICATIONS:
STORAGE TEMPERATURE:
HUMIDITY:
CURRENT OVERLOAD TEST:
TEST SPECIFICATIONS:
INDUCTANCE:
CAPACITANCE, MEASURED @ 1 KHz, 0.25 VAC MAX., 25°C ±1°C
LINE TO GROUND:
LINE TO LINE:
DISCHARGE RESISTOR
LINE/GROUND AND LINE/LINE
INSULATION RESISTANCE

-40°C TO +85°C
21 DAYS @ 40°C 95% RH
6 TIMES RATED CURRENT FOR 8 SECONDS

1.86 mH NOMINAL
.003μF ±20%
.81μF ±20%
330KΩ
5000 MΩ (MIN) AT 100 VDC
20°C AND 50% RH

RECOMMENDED RECEIVING INSPECTION HIPOT:
LINES TO GROUND:
LINE TO LINE:
FILTER APPROVAL:
THE BEST WAY TO SELECT AND QUALIFY A FILTER IS FOR YOUR ENGINEERING TO TEST THE UNIT IN YOUR EQUIPMENT.

2250 VDC FOR 1 MINUTE
1450 VDC FOR 1 MINUTE

TOLERANCE EXCEPT AS NOTED
DECIMAL: .XXX .XX .X ANGLES ± 1°
ENGLISH: ±.025
METRIC: # —
MATERIAL: AS SUPPLIED
FINISH: AS SUPPLIED

50Ω - 50Ω MINIMUM INSERTION LOSS

FREQUENCY MHz	.15	.5	1	2	5	10	20	30
COMMON dB	18	32	40	45	45	45	52	40
DIFF. dB	20	50	65	65	60	53	48	48

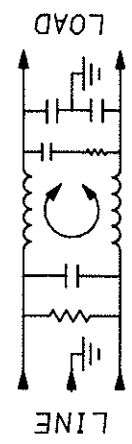
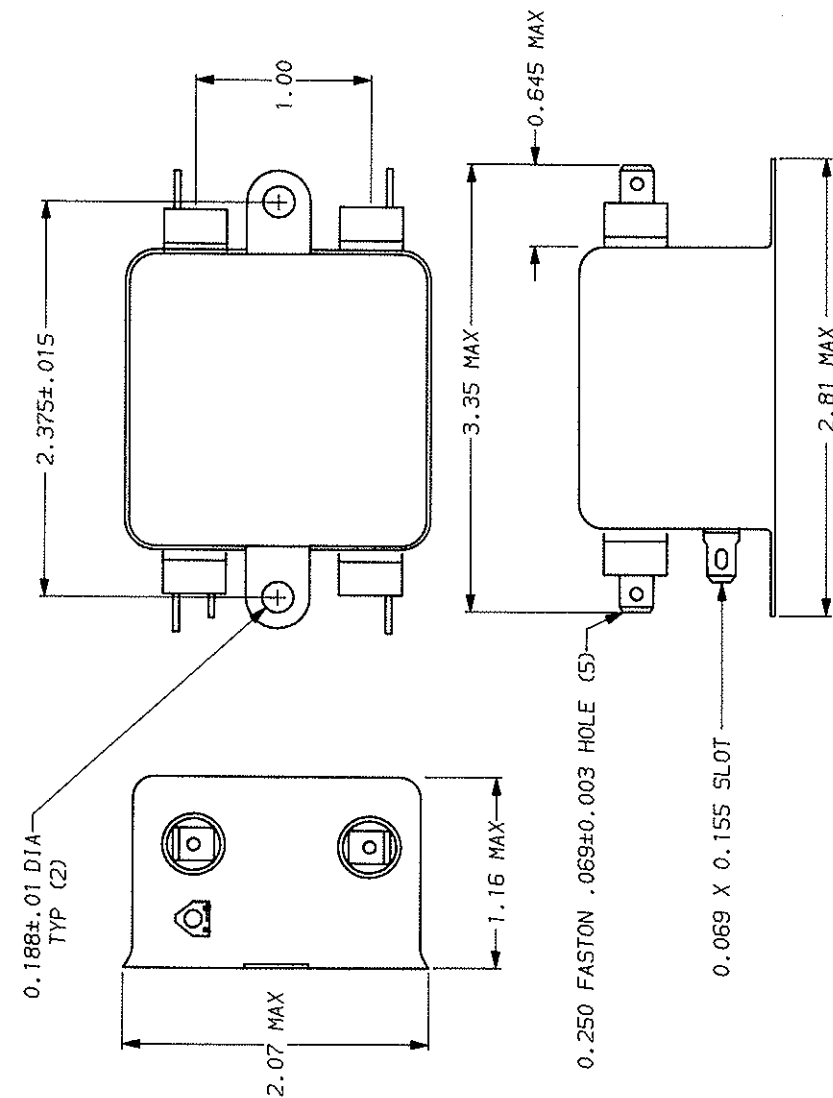
This document is proprietary to CORCOM INC. and is not to be reproduced nor used for manufacturing purposes except on CORCOM's order or prior written consent.

APPROVED BY/DATE
C. Webster 5-26-72

REV

corcom
LIBERTYVILLE, IL 60048

POWER LINE FILTER



Mouser Electronics

Authorized Distributor

Click to View Pricing, Inventory, Delivery & Lifecycle Information:

[TE Connectivity:](#)

[1EDK1](#)