

## SAFETY ORGANIZATIONS

THIS FILTER HAS BEEN FORMALLY RECOGNIZED, CERTIFIED OR APPROVED BY THE LISTED AGENCY. THEREFORE, ALL TEST/REQUIREMENTS SPECIFIED IN THE LATEST REVISION OF THE FOLLOWING AGENCY STANDARDS HAVE BEEN MET:

UL RECOGNIZED: UL 1283  
CSA CERTIFIED: CSA C22.2, # 8  
VDE APPROVED: EN 60939-2

## OPERATING SPECIFICATIONS

LINE CURRENT/VOLTAGE: 1 AMP, 120/250 VAC,  
1 AMP/40°C, 250 VAC

LINE FREQUENCY: 50-60Hz

MAXIMUM LEAKAGE CURRENT,  
EACH LINE TO GROUND: 0.25 mA @ 120V 60Hz  
0.40 mA @ 250V 50Hz

OPERATING AMBIENT TEMP. RANGE:  $-10^{\circ}\text{C}$  TO  $+40^{\circ}\text{C}$  @ RATED CURRENT,  $I_r$ .

IN AN AMBIENT,  $T_0$ , HIGHER THAN 40°C, THE MAXIMUM OPERATING CURRENT,  $I_0$ , IS AS FOLLOWS:  $I_0 = I_{0(40)} \sqrt{85 - T_0}$

$$I_o = I_r \sqrt{\frac{85 - T_o}{45}}$$

## RELIABILITY SPECIFICATIONS:

STORAGE TEMPERATURE:  $-40^{\circ}\text{C}$  TO  $+85^{\circ}\text{C}$   
HUMIDITY: 21 DAYS @  $40^{\circ}\text{C}$  95% RH.  
CURRENT OVERLOAD TEST: 6 TIMES  $I_r$  FOR  
8 SECONDS

## TEST SPECIFICATIONS:

INDUCTANCE: 4.06 mH NOMINAL  
CAPACITANCE: (MEASURED @ 1KHz, 0.250VAC MAX., 25°C±1°C)  
  LINE TO GROUND:         0.0028 µF ±20%  
  LINE TO LINE:           0.1000 µF ±20%  
DISCHARGE RESISTOR:      3.3 MΩ  
L/G AND L/L I.R.:  
NO DISCHARGE RESISTOR:   6000MΩ (MIN.) @ 100VDC,  
                                50% RH

## RECOMMENDED RECEIVING INSPECTION HIPOT:

LINE TO GROUND: 1500 VAC FOR 1 MINUTE  
LINE TO LINE: 1450 VDC FOR 1 MINUTE

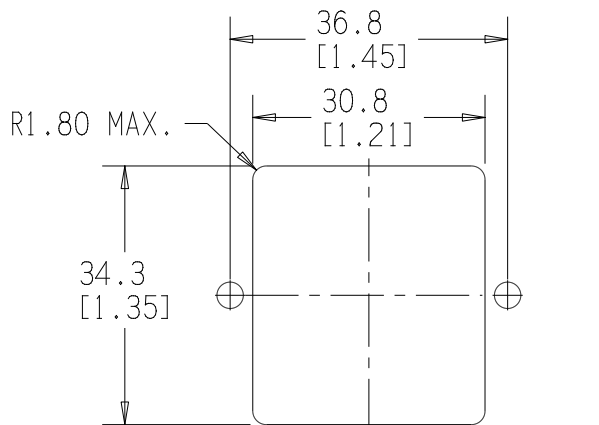
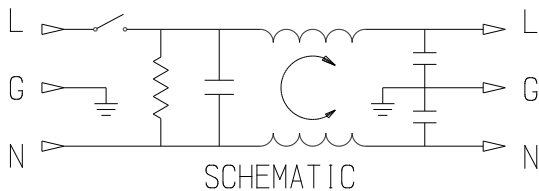
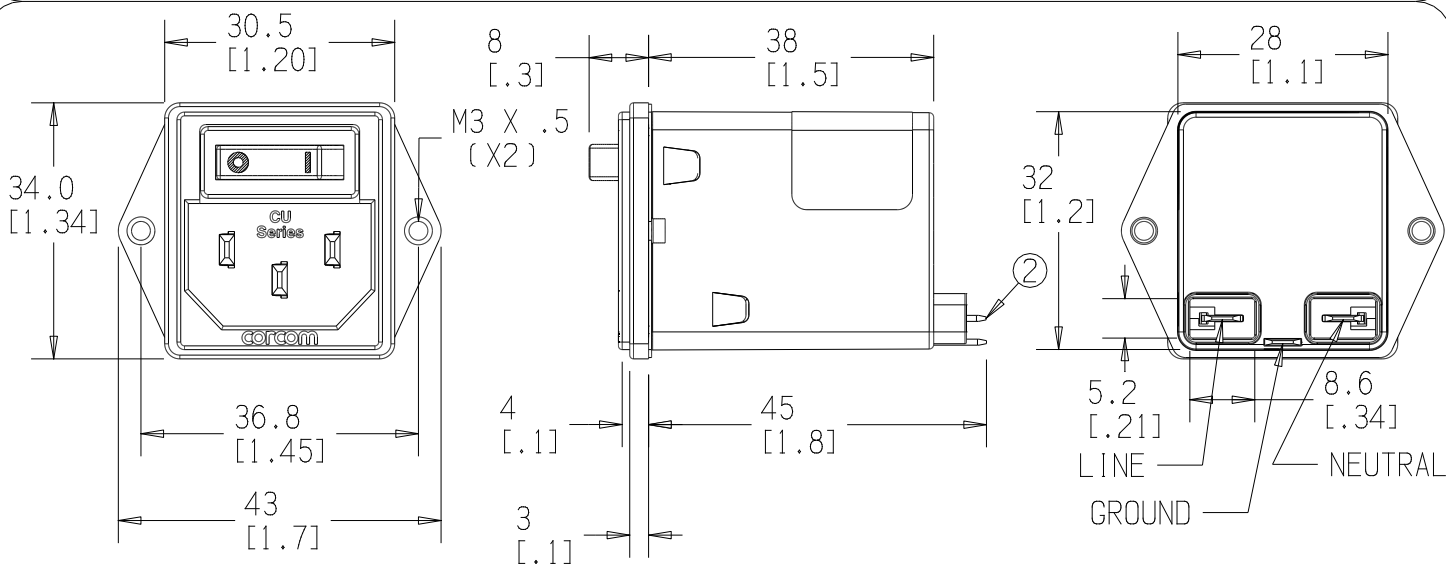
FILTER APPROVAL:

THE BEST WAY TO SELECT AND QUALIFY A FILTER IS FOR YOUR ENGINEERING TO TEST THE UNIT IN YOUR EQUIPMENT.

## CUSTOMER DRAWING

CATALOG # 1CUFF1

ECN #	APPRVD.	DATE
08-023523	EC	26DEC08

RECOMMENDED PANEL CUTOUT  $\pm 0.1$  MM

## 50 Ω - 50 Ω (MINIMUM) INSERTION LOSS

FREQUENCY MHz	.05	.15	.5	1	5	10	30	/	/	/	/	/
COMMON dB	19	30	44	49	47	44	45	/	/	/	/	/
DIFF. dB	1	10	21	26	48	51	60	/	/	/	/	/

PARTS SHALL COMPLY WITH TYCO ELECTRONICS 230-702 SPECIFICATION FOR HAZARDOUS SUBSTANCES

UNLESS OTHERWISE SPECIFIED  
TOLERANCE TO BE  $\pm 0.5$  MM  
MATERIAL & FINISH: AS SUPPLIED

DIMENSIONS ARE:  
MILLIMETER  
( INCH )

CVM	YES
AVAILABLE	X

G:\KeyCreator Directories\CD

NO

	1CUFF102.ckd



# Tyco Electronics

CORCOM PRODUCTS, 620 S. BUTTERFIELD RD. MUNDELEIN IL 60060

## POWER LINE FILTER

TYCO ELECTRONICS PART NO. 2-1609114-2

SCALE:	1 : 1
DRW. BY:	EC

DATE:	30DEC08
ORIG:	EC

DRAWING NUMBER:  
1CUFF1

REV.  
2

THIS INFORMATION IS CONFIDENTIAL AND PROPRIETARY TO TYCO ELECTRONICS CORPORATION AND ITS WORLDWIDE SUBSIDIARIES AND AFFILIATES. IT MAY NOT BE DISCLOSED TO ANYONE OTHER THAN TYCO ELECTRONICS PERSONNEL, WITHOUT WRITTEN AUTHORIZATION FROM TYCO ELECTRONICS CORPORATION.  
HARRISBURG, PENNSYLVANIA USA.

# Mouser Electronics

Authorized Distributor

Click to View Pricing, Inventory, Delivery & Lifecycle Information:

[TE Connectivity:](#)

[1CUFF1](#)