

CATALOG # 1CUFE1

STORAGE TEMPERATURE: -40°C TO +85°C  
HUMIDITY: 21 DAYS @ 40°C 85% RH.  
CURRENT OVERLOAD TEST: 5 TIMES I<sub>r</sub> FOR  
8 SECONDS

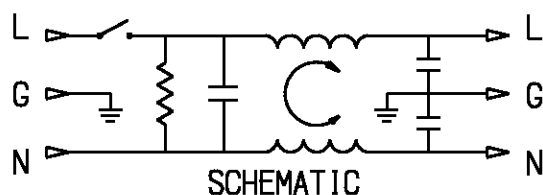
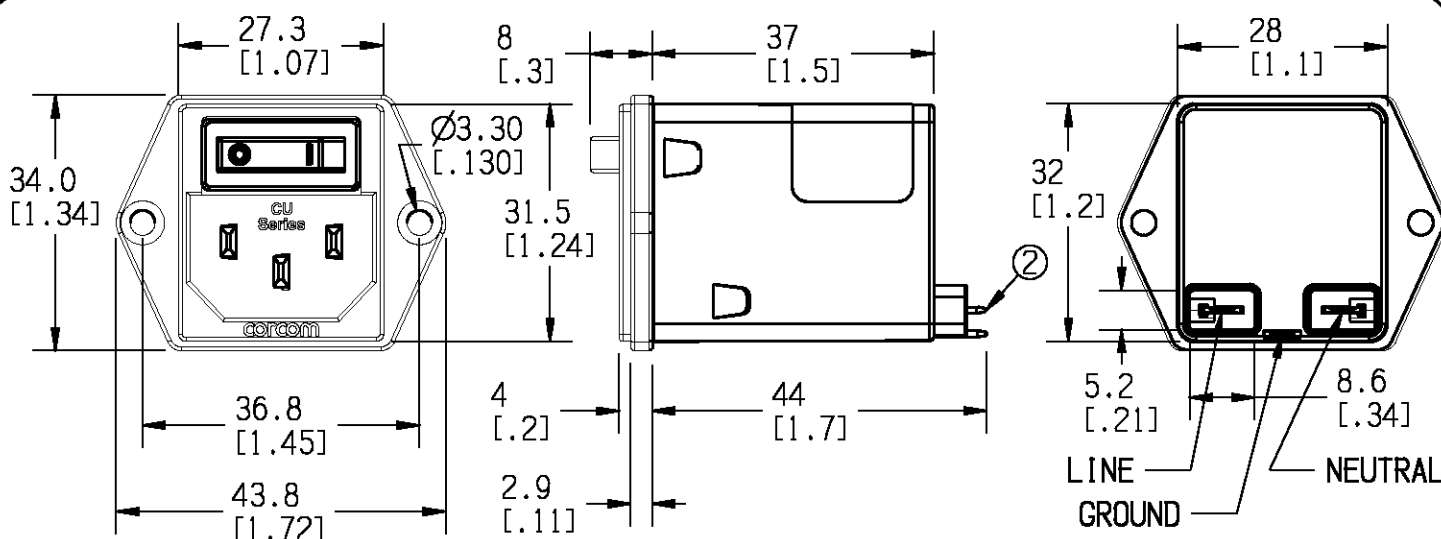
INDUCTANCE: 4.06 mH NOMINAL  
CAPACITANCE: (MEASURED @ 1kHz, 0.250VAC MAX., 25°C±1°C)  
  LINE TO GROUND: 0.0028 µF ±20%  
  LINE TO LINE: 0.1000 µF ±20%  
DISCHARGE RESISTOR: 3.3 MΩ  
L/G AND L/L I.R.  
NO DISCHARGE RESISTOR: 8000 Ω (MIN.) @ 100VDC,  
20°C AND 50% RH

LINE TO GROUND: 1500 VAC FOR 1 MINUTE  
LINE TO LINE: 1450 VDC FOR 1 MINUTE

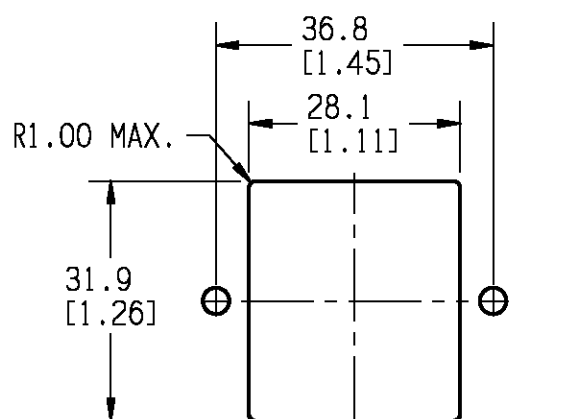
IN AN AMBIENT,  $T_a$ , HIGHER THAN 40°C, THE MAXIMUM OPERATING CURRENT,  $I_a$ , IS AS FOLLOWS:  $I_a = I_{a(40)} \sqrt{\frac{85 - T_a}{45}}$

$$I_o = I_r \sqrt{\frac{85 - T_a}{45}}$$





**THE BEST WAY TO SELECT AND QUALIFY A FILTER IS FOR YOUR ENGINEERING TO TEST THE UNIT IN YOUR EQUIPMENT.**



1. SOCKET COMPLIES WITH EN 60320-1.  
②. LOAD TERMINALS COMPLY WITH  
DIN 46244, 4.8MM X 0.8MM.

RECOMMENDED PANEL CUTOUT  $\pm 0.1$  MM

REV	DESCRIPTION	DATE	DWN	APR
3	REVISED PER ECO-11-005139	28MAR11	RK	HMR

50 Ω - 50 Ω (MINIMUM) INSERTION LOSS													PARTS SHALL COMPLY WITH 'TE Connectivity 230-702 SPECIFICATION FOR HAZARDOUS SUBSTANCES					
FREQUENCY MHz	.05	.15	.5	1	5	10	30	/	/	/	/	/	 TE Connectivity					
COMMON dB	19	30	44	49	47	44	45	/	/	/	/	/	UNLESS OTHERWISE SPECIFIED TOLERANCE TO BE ±0.5 MM MATERIAL & FINISH: AS SUPPLIED DIMENSIONS ARE: MILLIMETER ( INCH )					
DIFF. dB	1	10	21	26	48	51	60	/	/	/	/	/						
SHEET SIZE	BAND ANGLE PROTECTION		  										CVM AVAILABLE		YES	NO	SCALE: 1:1 DATE: 30DEC08 DRAWING NUMBER: 1CUFE1 REV. 3	
															X			

# Mouser Electronics

Authorized Distributor

Click to View Pricing, Inventory, Delivery & Lifecycle Information:

[TE Connectivity:](#)

[1CUFE1](#)