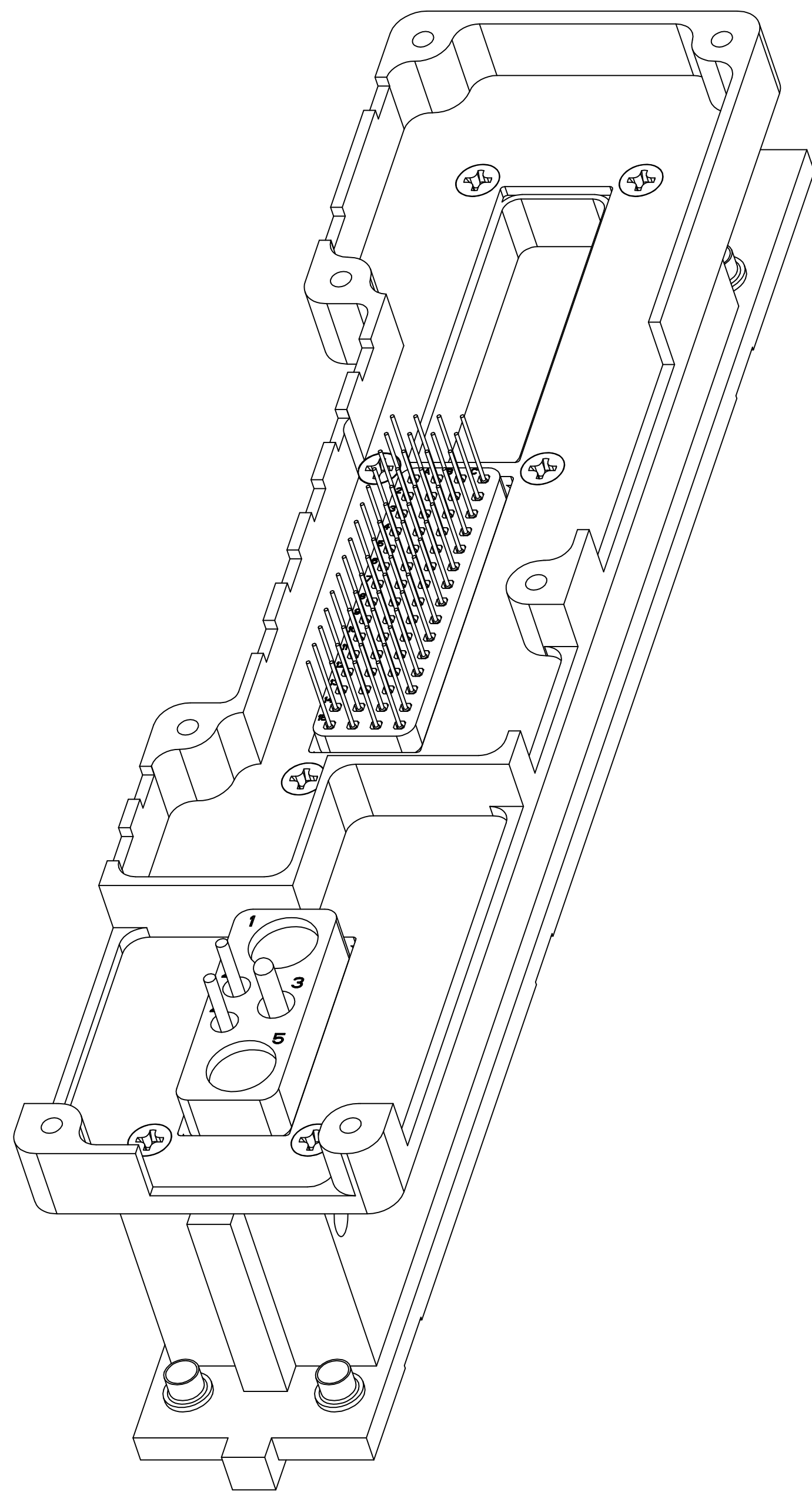
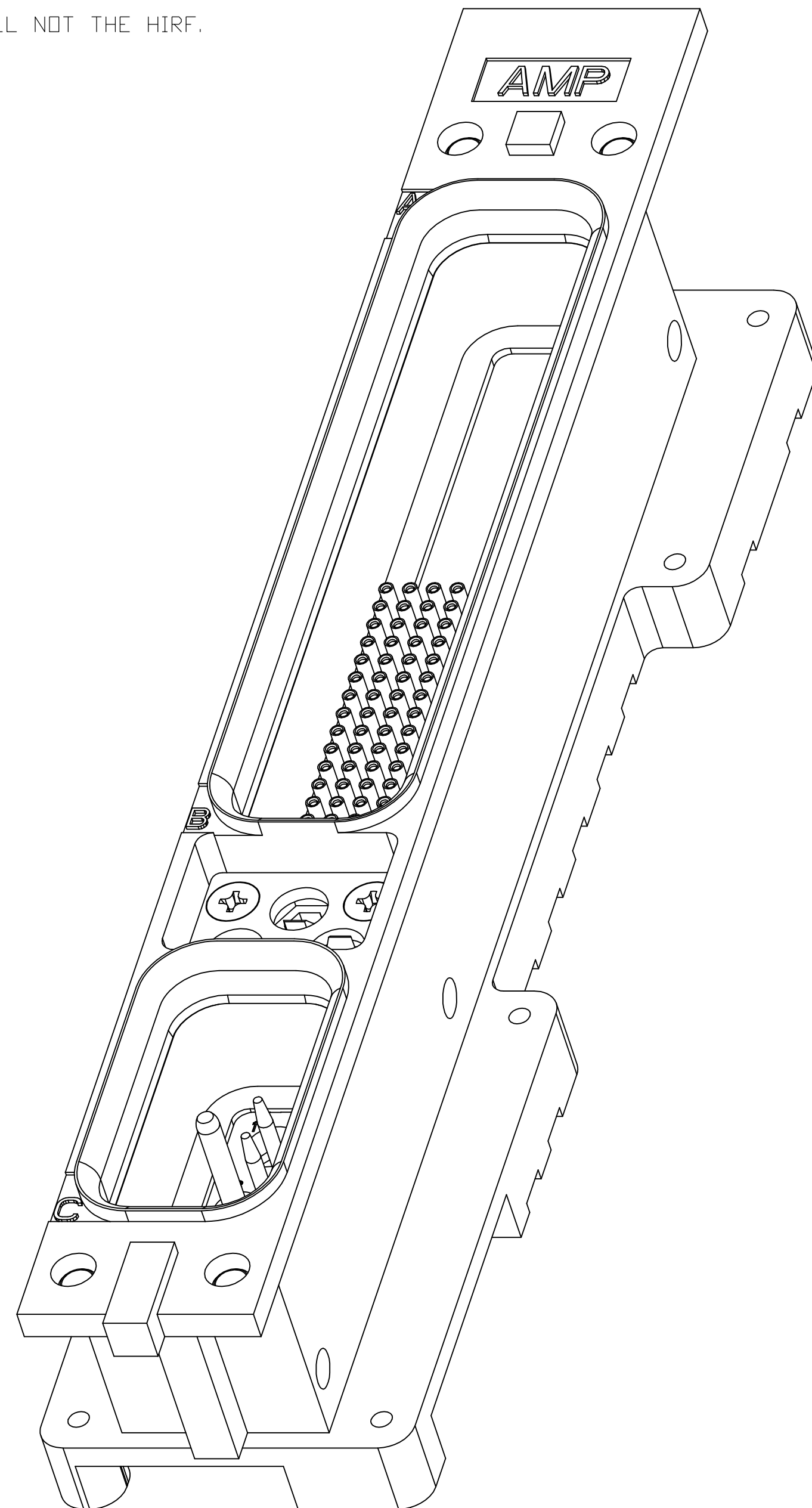




LOC —	DIST —	REVISIONS					
		P	LTR	DESCRIPTION	DATE	DWN	APVD
		F		REV PER ECO 09-025422	11-16-09	CT	KT

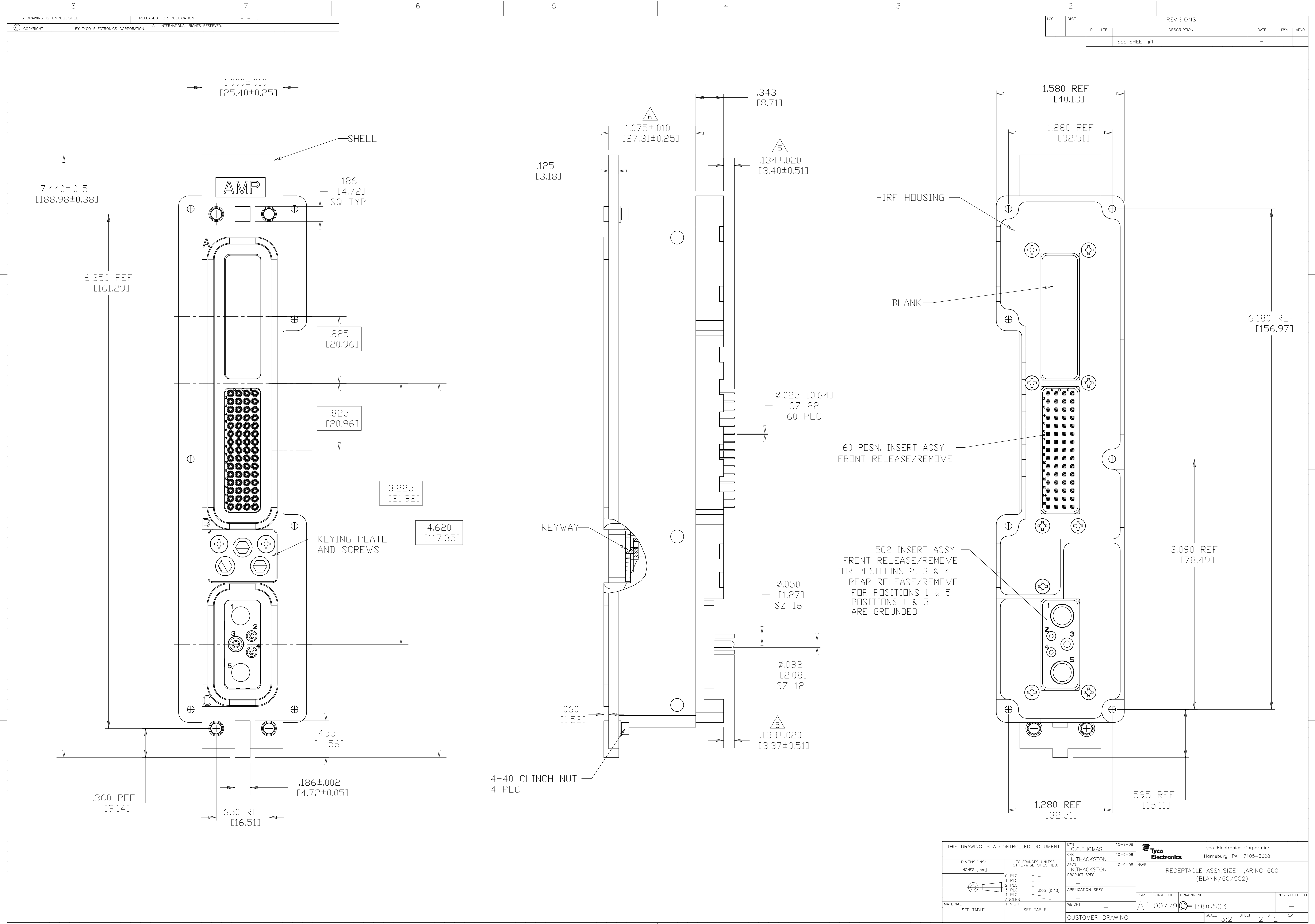
1. CONNECTOR DIMENSIONS ARE PER ARINC 600 SPECIFICATION UNLESS OTHERWISE SPECIFIED.
2. CONNECTOR IS SUPPLIED WITH CONTACTS (PER TABLE) ASSEMBLED AS SHOWN.
3. KEYING SHOWN IN POSITION FOR ILLUSTRATION ONLY.
CONNECTORS SHIPPED WITH KEYING INSTALLED IN POSITION PER TABLE.
4. DUST COVER INSTALLED FOR SHIPPING, NOT SHOWN.
5. WITH CONTACT FULLY SEATED IN CAVITY.
6. THIS DIMENSION IS MEASURED TO THE BACK OF THE SHELL NOT THE HIRF.



COMPONENT	MATERIAL	FINISH
SHELL	DIE CAST ALUMINUM PER ASTM-B-85	ELECTROLESS NICKEL PER MIL-C-26074
HIFF HOUSING RETENTION PLATE	ALUMINUM ALLOY 6061-T6	ELECTROLESS NI QQ-N-290 .0006 MIN OVER CU .0002
SCREWS AND LOCK WASHERS	STEEL	ZINC PLATED OVER SUPPLEMENTAL CHROME
POLARIZING KEYS	ZINC ALLOY PER ASTM-B-86	-
POLARIZING KEY RETAINING PLATE	ALUMINUM ALLOY PER ASTM-B-209	BLUE ANODIZED PER MIL-A-8625
60 & 5C2 INSERTS	THERMOSET	-
BLANK INSERT	ALUMINUM ALLOY PER ASTM-B-209	ELECTROLESS NICKEL PER MIL-C-26074
FILLER PLUG	TEFLON	-

"02"	HIRF P/N: 1996860-1; HONEYWELL P/N: 047-50541-0501 MODULE A: BLANK MODULE B: SZ 22 POSTED PIN CONTACT: TE P/N 1-211431-8 (QTY=60) MODULE C: SZ 16 POSTED PIN CONTACT: TE P/N 3-448139-3 (QTY=2) LOADED IN POSITION #2 & 4 SZ 12 POSTED PIN CONTACT: TE P/N 2-448140-2 (QTY=1) LOADED IN POSITION #3	1996503-1
KEYING POSITION	CONTACTS INCLUDED AND INSTALLED	PART NUMBER

THIS DRAWING IS A CONTROLLED DOCUMENT.		DWN C.C. THOMAS 10-9-08 CHK K. THACKSTON 10-9-08 APPR K. THACKSTON 10-9-08	 Tyco Electronics Corporation Harrisburg, PA 17105-3608	
DIMENSIONS: INCHES [mm]	TOLERANCES UNLESS OTHERWISE SPECIFIED:	NAME	RECEPTACLE ASSY,SIZE 1,ARINC 600 (BLANK/60/5C2)	
	0 PLC ± — 1 PLC ± — 2 PLC ± — 4 PLC ± .005 [0.13] 6 PLC ± — ANGLES ± —	PRODUCT SPEC — APPLICATION SPEC	SIZE A1	CAGE CODE 00779
MATERIAL SEE TABLE	FINISH SEE TABLE	WEIGHT — CUSTOMER DRAWING	DRAWING NO C-1996503	RESTRICTED TO 1 OF 2 REV F



LOC		DIST		REVISONS			
F		LTR		DESCRIPTION		DATE	DWN
-		-		SEE SHEET #1		-	-

THIS DRAWING IS A CONTROLLED DOCUMENT.		DWN C.C.THOMAS 10-9-08	Tyco Electronics Corporation Harrisburg, PA 17105-3608		
DIMENSIONS: INCHES (mm)		CHK K.THACKSTON 10-9-08	NAME K.THACKSTON 10-9-08 RECEPTACLE ASSY,SIZE 1,ARINC 600 (BLANK/60/5C2)		
TOLERANCES UNLESS OTHERWISE SPECIFIED:		PRODUCT SPEC			
0 PLC ± -		APPLICATION SPEC			
1 PLC ± -		WEIGHT			
2 PLC ± -		CUSTOMER DRAWING			
3 PLC ± .005 [0.13]		SCALE 3:2			
4 PLC ± -		SHEET 2 OF 2			
ANGLES ± -		REV F			
FINISH		RESTRICTED TO			
MATERIAL SEE TABLE		A1 00779 ©-1996503			

Mouser Electronics

Authorized Distributor

Click to View Pricing, Inventory, Delivery & Lifecycle Information:

[TE Connectivity:](#)

[1996503-1](#)