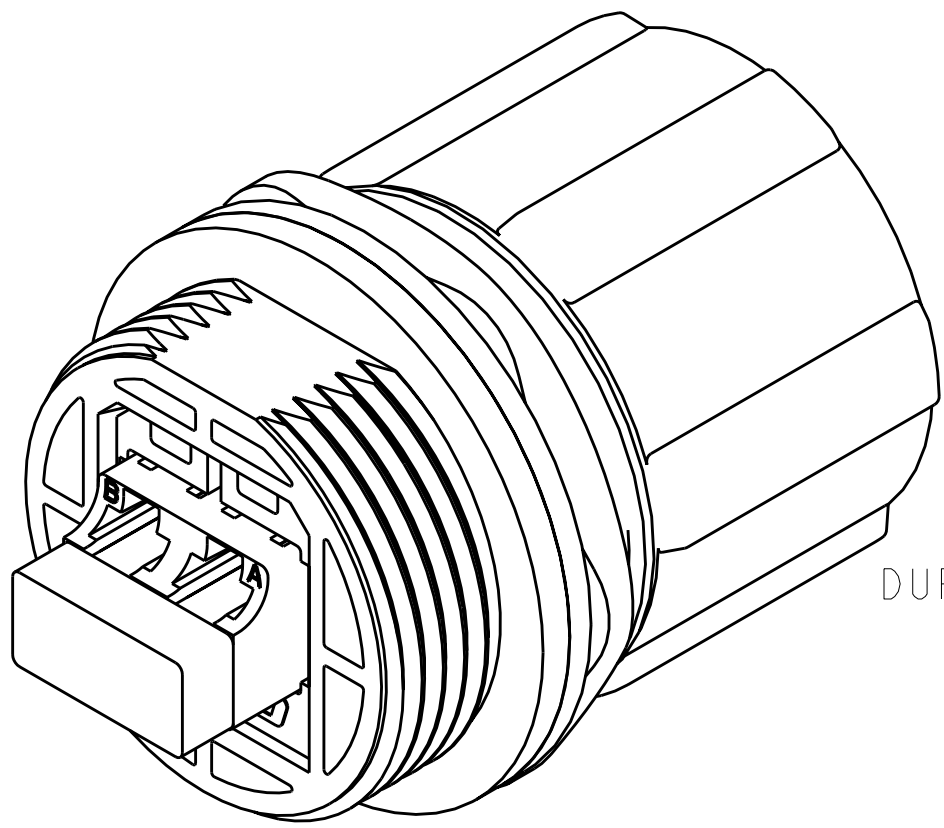
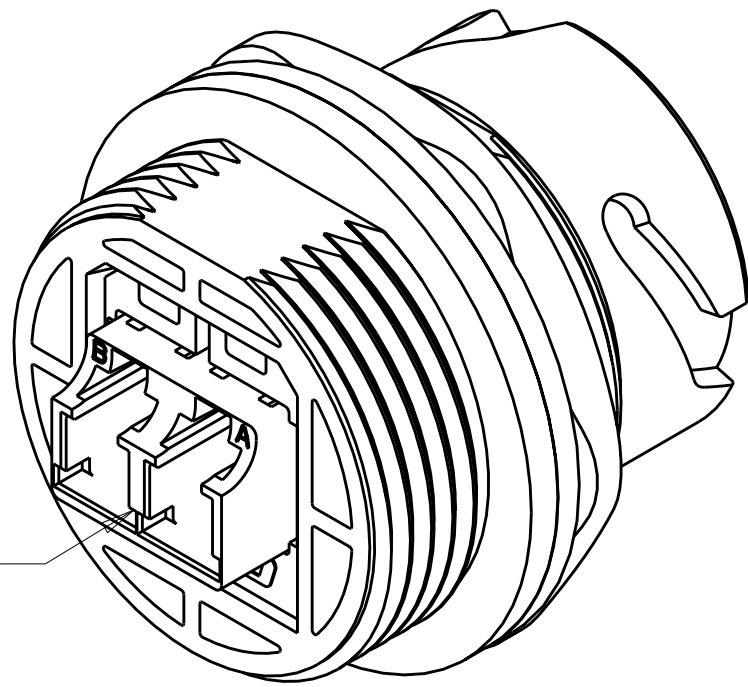


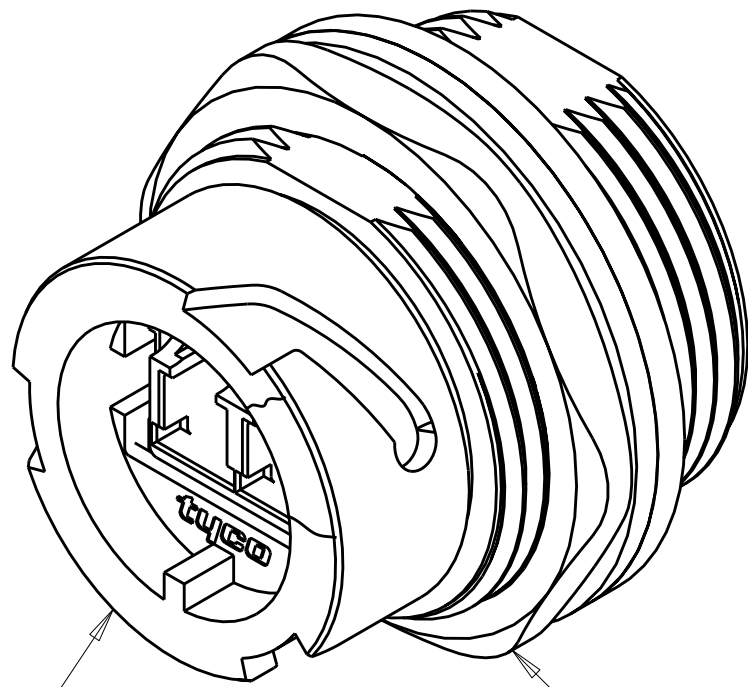
LOC	DIST	REVISIONS			
CE	00	P	LTR	DESCRIPTION	DATE
			A	ECR-08-028526	11NOV2008



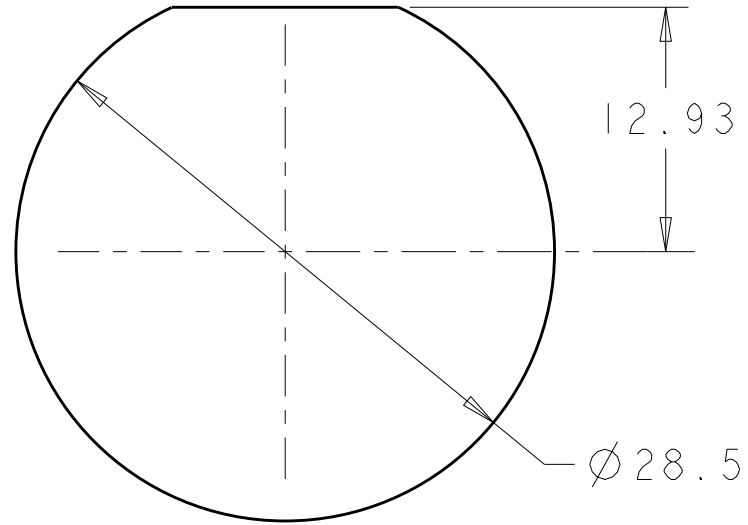
ASSEMBLED VIEW
WITH PROTECTIVE COVERS



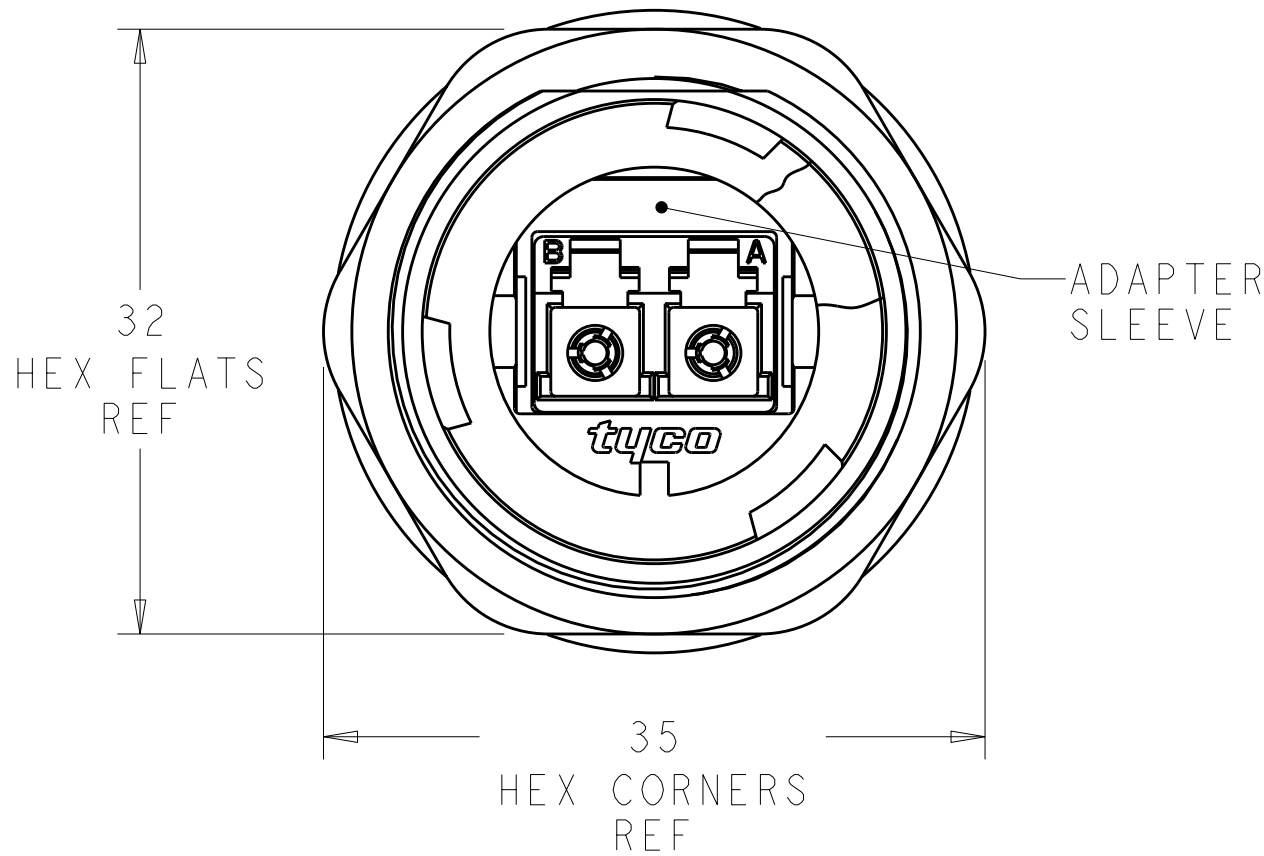
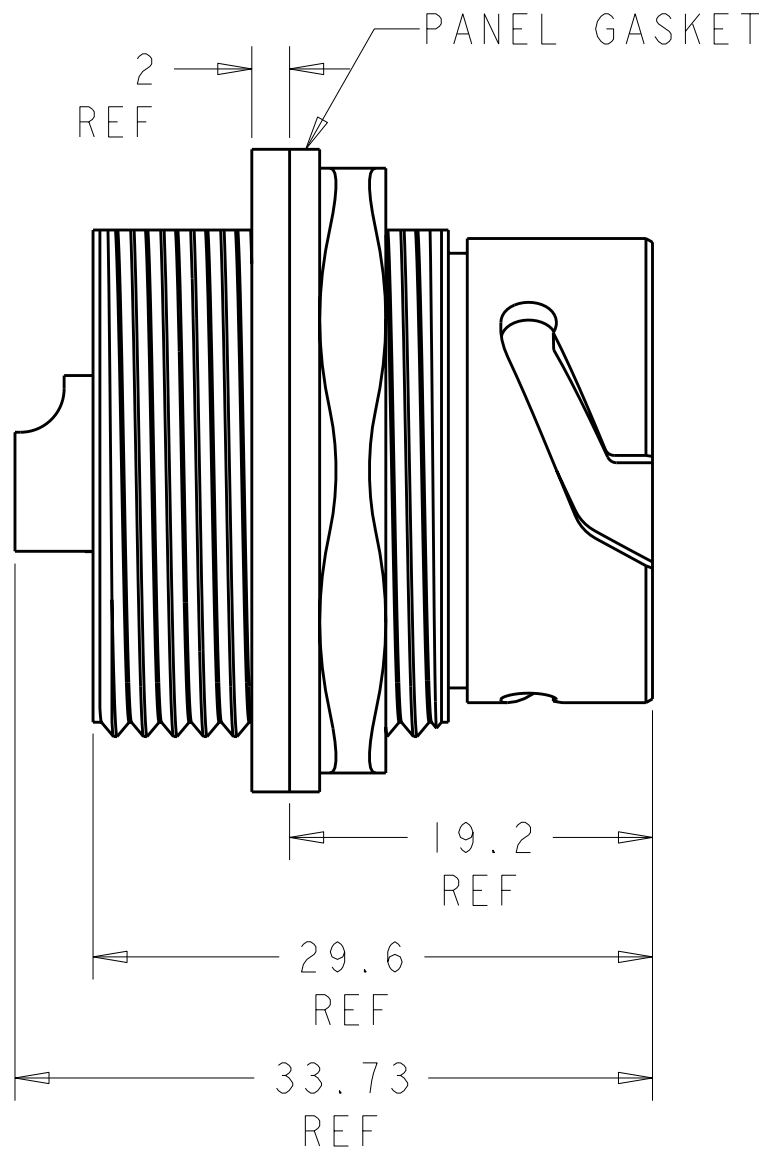
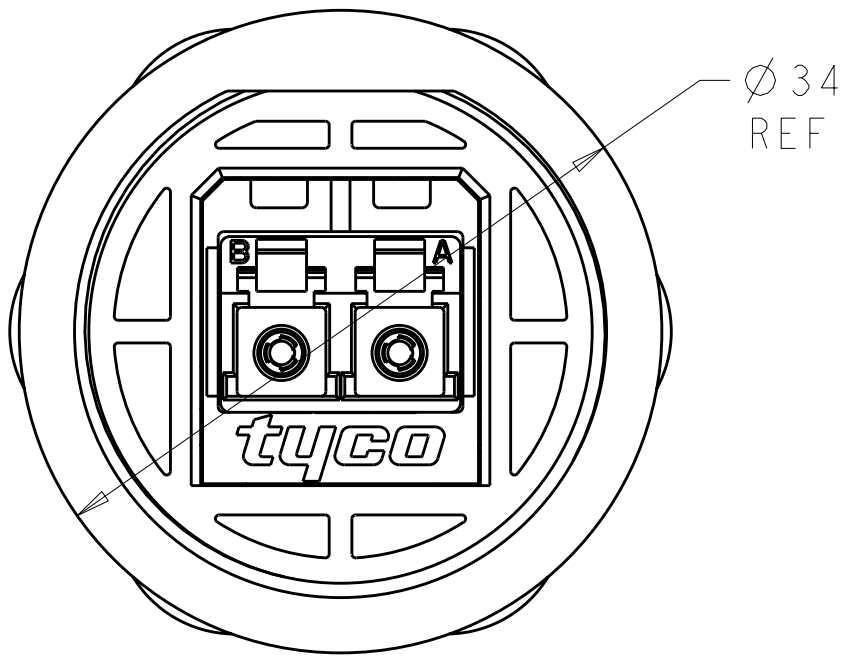
RECEPTACLE HOUSING



PANEL NUT



RECOMMENDED PANEL CUT-OUT
MAX PANEL THICKNESS 3.2mm



⚠ MATERIAL:
HOUSING, RECEPTACLE: PBT, SS/Cu/Cu/SS PLATED*
NUT, PANEL: BRASS, Ni PLATED
GASKET: SILICONE, COLOR: RED/ORANGE
ADAPTER SLEEVE: PPE+PS, SS/Cu/Cu/SS PLATED*

LC DUPLEX ADAPTER ASSY:
HOUSING: PEI, SS/Cu/Cu/SS PLATED*
PROTECTIVE COVER: TPE, COLOR: BLACK*
ALIGNMENT SLEEVES: CERAMIC

* UL 94 V-0 RATED AT QUALIFYING THICKNESS.

1985193-1

PART NO.

THIS DRAWING IS A CONTROLLED DOCUMENT FOR TYCO ELECTRONICS CORPORATION IT IS SUBJECT TO CHANGE AND THE CONTROLLING ENGINEERING ORGANIZATION SHOULD BE CONTACTED FOR THE LATEST REVISION.		DWN E. HOPKINS 24AUG2007	Tyco Electronics Harrisburg, PA 17105-3608	
DIMENSIONS: mm		CHK D. ERDMAN 24AUG2007	NAME ASSEMBLY, EMI, ODVA, RECEPTACLE	
TOLERANCES UNLESS OTHERWISE SPECIFIED:		APVD D. BAECHEL 24AUG2007	SIZE A200779	
0 PLC ± 1 PLC ± 2 PLC ± 3 PLC ± 4 PLC ± ANGLES ± FINISH		PRODUCT SPEC - APPLICATION SPEC - WEIGHT -	DRAWING NO C-1985193	
MATERIAL 1		CUSTOMER DRAWING	RESTRICTED TO -	
		SCALE 5:2	SHEET 1 OF 1	
			REV A	

Mouser Electronics

Authorized Distributor

Click to View Pricing, Inventory, Delivery & Lifecycle Information:

[TE Connectivity:](#)

[1985193-1](#)