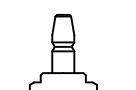
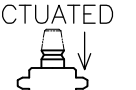

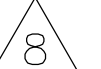


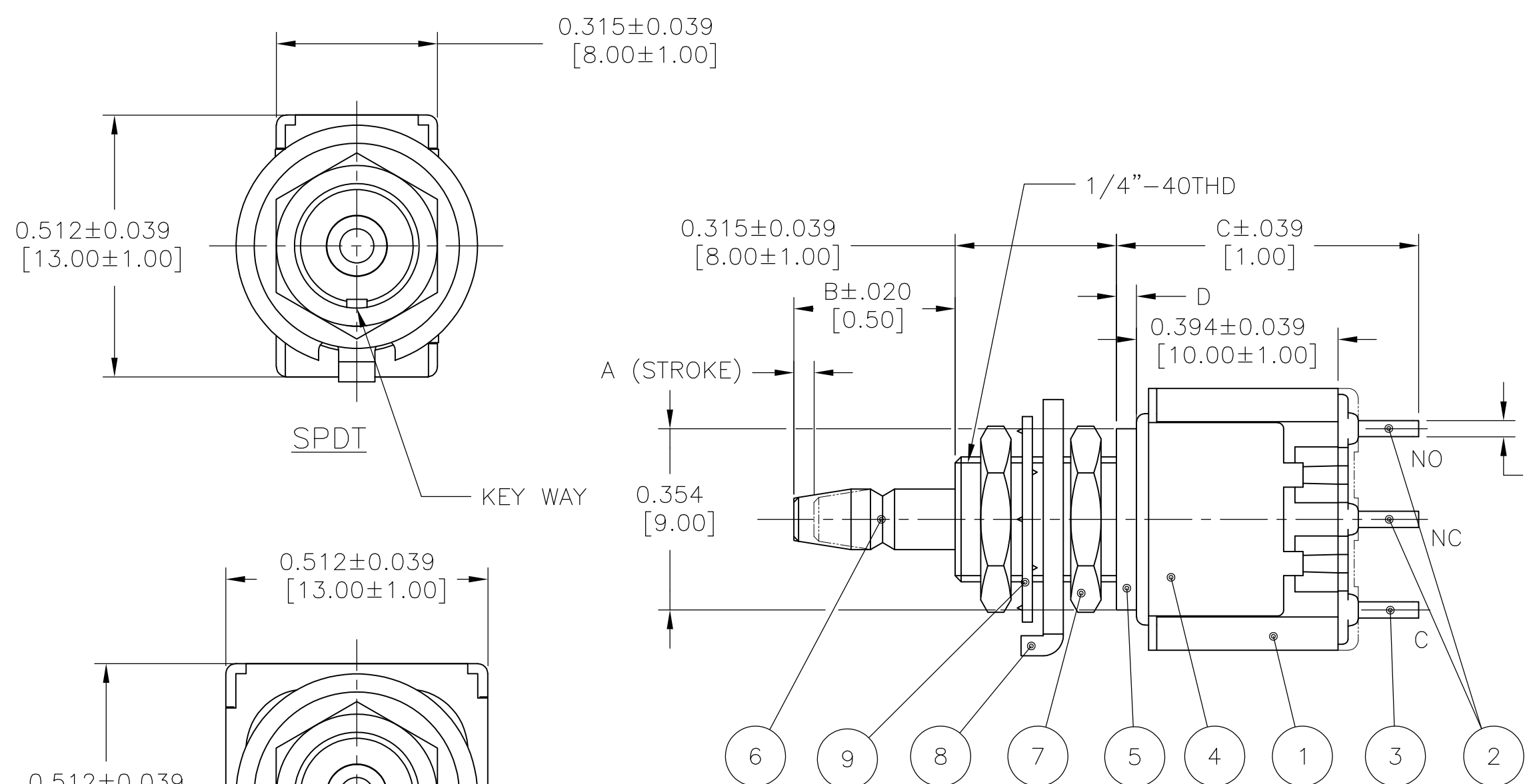
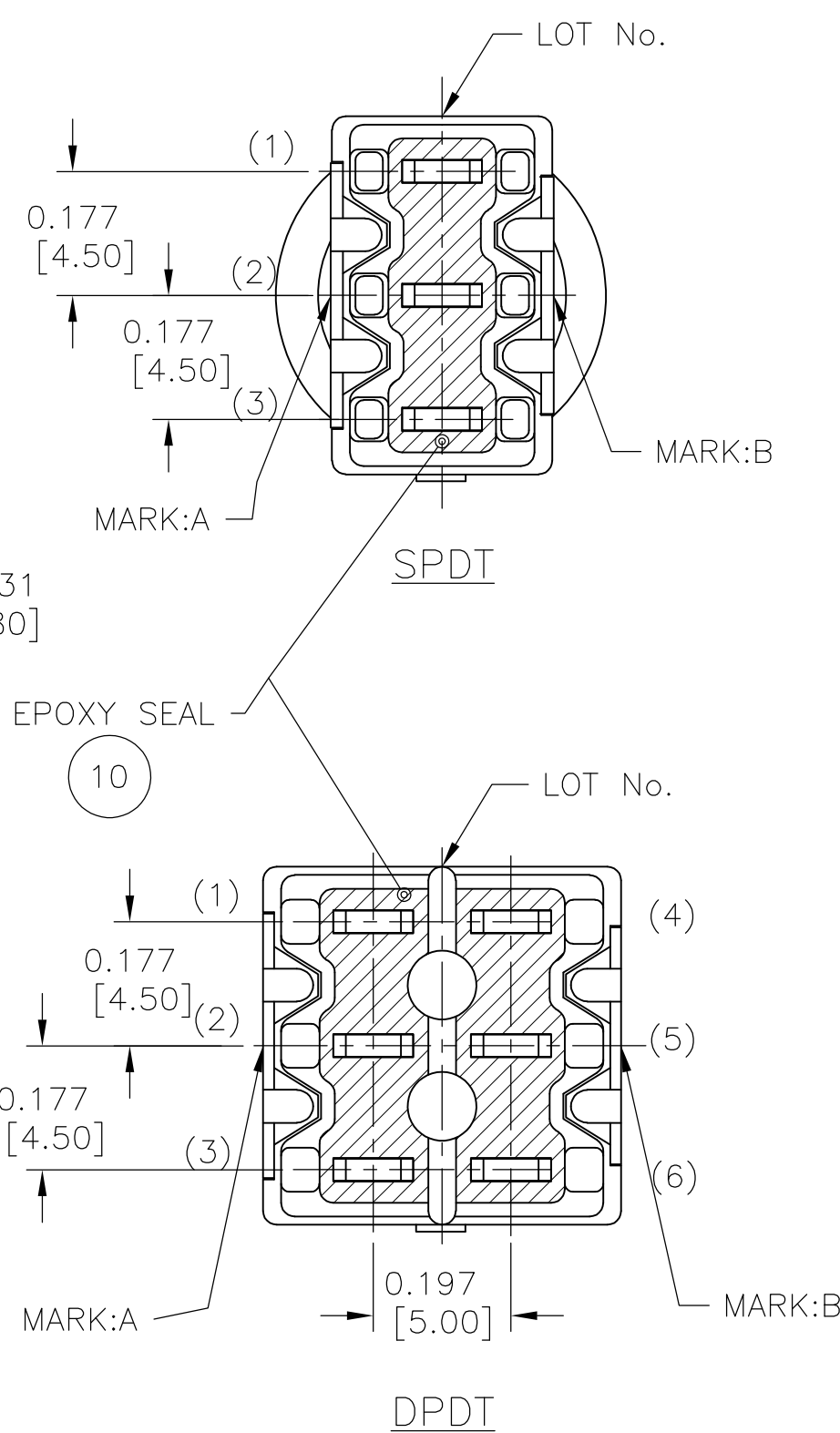
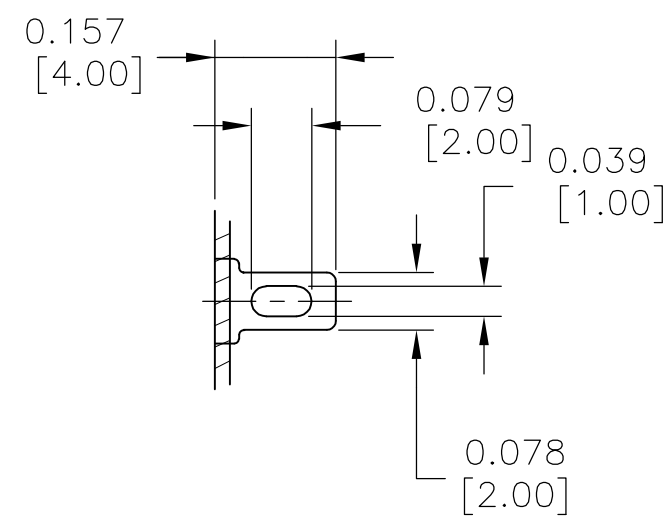


		DIMENSION				OPERATING FORCE	PART NUMBER	TYPE	MARK			
		A	B	C	D				MARK:A	MARK:B		
MOMENTARY	ON-ON	.098 [2.5]	.331 [8.4]	.650 [16.5]	.098 [2.5]		1977737-1 MPS1004D	SPDT	MPS1004D ALCO	DC 60mA 30V ON ON C	3-2	3-1
	ON-(ON)	.039 [1]	.315 [8]	.591 [15]	.039 [1]		1977737-2 MPS1004F		MPS1004F ALCO	DC 60mA 30V NO NC C		(3)-(1)
	ON-ON	.098 [2.5]	.331 [8.4]	.650 [16.5]	.098 [2.5]		1977737-3 MPS2004N	DPDT	MPS2004N ALCO	DC 60mA 30V ON ON C	3-2 6-5	3-1 6-4
MOMENTARY	ON-(ON)	.039 [1]	.315 [8]	.591 [15]	.039 [1]		1977737-4 MPS2004R		MPS2004R ALCO	DC 60mA 30V NO NC C		(3)-(1) (6)-(4)

NOTE: TERMINALS 4,5,6 ARE FOUND ONLY ON DP VERSIONS (-3, -4)



TERMINAL FORM



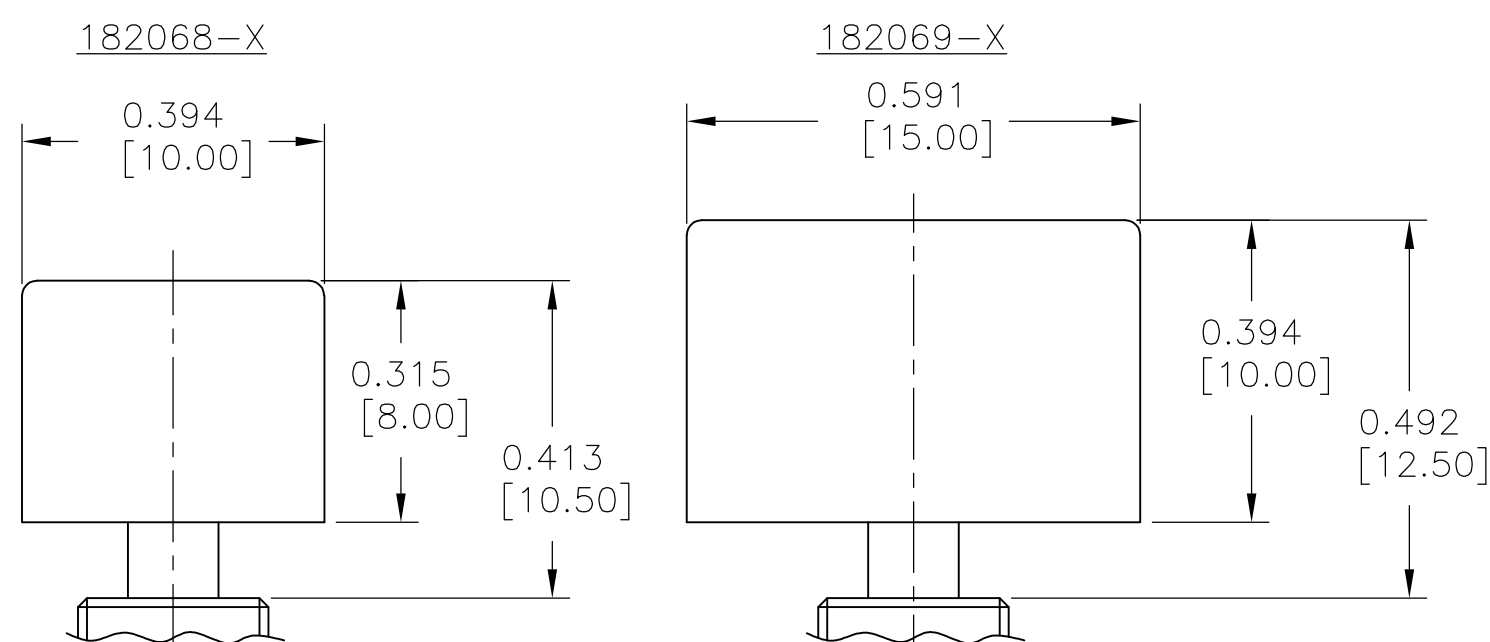
SPECIFICATIONS:

- 1 RATING: MIN, 1 μ a 20mV DC, MAX, 60mA 30V DC (RESISTIVE LOAD).
2 INITIAL CONTACT RESISTANCE: 20m Ω MAX. AT 5mA 0.2V AC.
3 INITIAL INSULATION RESISTANCE: 1,000M Ω MIN. AT 500V DC.(BETWEEN TERMINALS AND TERMINAL-GROUND).
4 INITIAL DIELECTRIC STRENGTH: 1,000V AC FOR 1 MINUTE.(BETWEEN TERMINALS AND TERMINAL-GROUND).
5 DURABILITY: 50,000 CYCLES.

OPERATING FORCE:

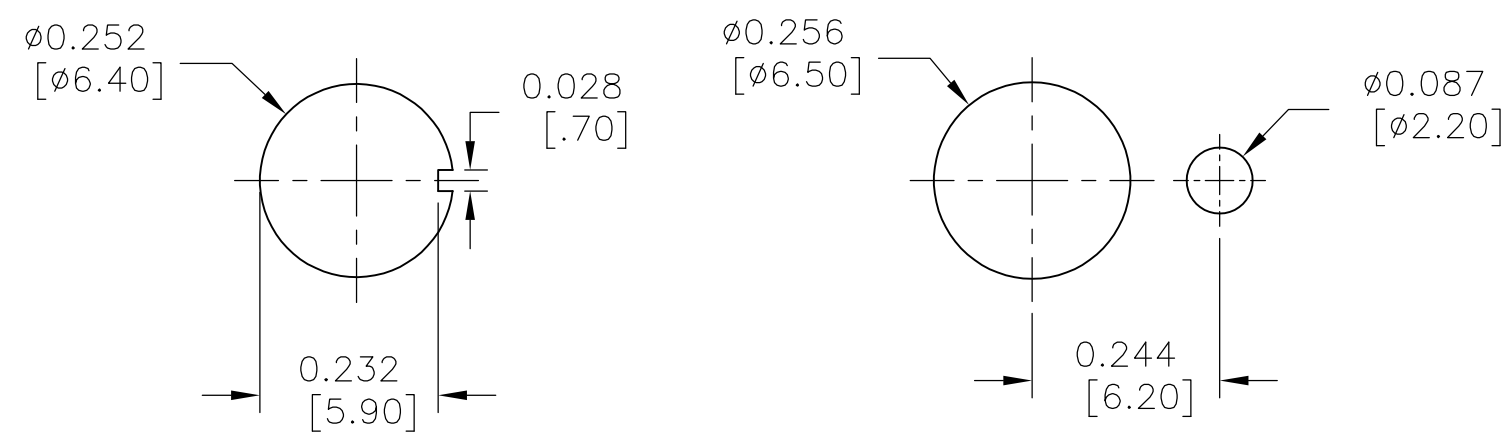
- | | |
|----|--|
| 6 | 3.92±1.96N (400±200gf) |
| 7 | 4.9 ^{+2.94} _{-1.96} N (500 ⁺³⁰⁰ ₋₂₀₀ gf) |
| 8 | 2.94±0.98N (300±100gf) |
| 9 | 4.9 ^{+1.96} _{-0.98} N (500 ⁺²⁰⁰ ₋₁₀₀ gf) |
| 10 | OPERATING TEMP: -20 ~ +85°C
STORAGE TEMP: -40 ~ +85°C |
| 11 | ALL MATERIALS AND FINISHES SHALL COMPLY WITH EU DIRECTIVE 2002/95/EC OF 27JAN2003 (ROHS) |
| 12 | LASER MARKING USED FOR MARKS. |

PANEL CUT-OUTS (REF)



BUTTON CAP
SOLD SEPARATELY

SEE DRAWINGS 1825068 (ø.394 [10 MM]) &
1825069 (ø.591 [15 MM])
FOR COLOR CHOICES



WITHOUT LOCKING RING
MAXIMUM PANEL THICKNESS:
.118 [3.0mm]

WITH STANDARD LOCKING RING
MAXIMUM PANEL THICKNESS:
.079 [2mm]

A/R	A/R	BLUE	—	EPOXY	10
1	1	ZINC PLATE	CARBON TOOL STEEL	TOOTH WASHER	9
1	1	ZINC PLATE	COLD ROLLED STEEL	LOCATING RING	8
2	2	NICKEL PLATE	BRASS	HEX NUT	7
1	1	NICKEL PLATE	BRASS	PLUNGER	6
1	1	NICKEL PLATE	BRASS	MOUNTING SLEEVE	5
1	1	—	STAINLESS STEEL	FRAME	4
2	1	GOLD PLATE	BRASS	COMMON TERMINAL	3
4	2	GOLD PLATE	BRASS	FIXED CONTACT	2
1	1	(BLUE)	EPOXY RESIN, UL94V-0	CASE	1
2 POLES	1 POLE QTY	FINISH (COLOR)	MATERIALS	PARTS	NO

[illegible]

Mouser Electronics

Authorized Distributor

Click to View Pricing, Inventory, Delivery & Lifecycle Information:

[TE Connectivity:](#)

[MPS2004N](#)