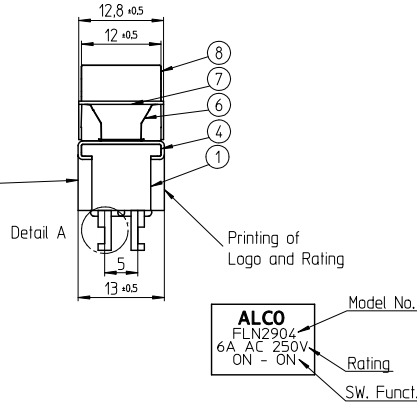
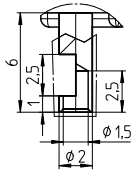
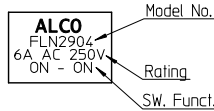


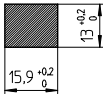
Detail A  
Scale 5:1



Date Code Printing  
last digit of year  
A-L = January to December  
Day

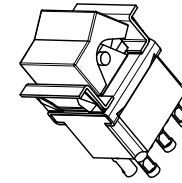
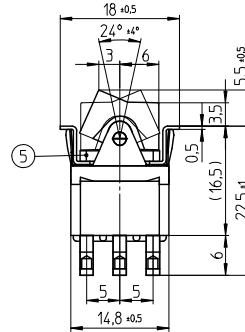
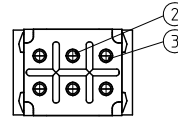


Panel Cutout  
thickness 1 to 2.5mm

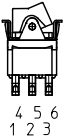


### Specifications

TE PN	Part	Rating	Initial Contact Resistance	Insulation Resistance	Dielectric Strength	Endurance
2-6437630-3 2-6437630-5 4-6437630-7	FLN2904	AC 125V 6A AC 250V 6A	MAX 10 milliohms at DC 2 ~ 4V 1A	MIN 1000 M Ohms at DC 500V	AC 1kV/1min (AC 1.2kV/1sec)	electrically 50,000 cycles at 20 cycles/minutes (rated load resistive) mechanically 100,000 cycles at 20 cycles/minutes



### Function Chart



TE PN	Button	Part	Terminals 1 and 2 4 and 5	Terminals 2 and 3 5 and 6
2-6437630-3	white	FLN2904	ON	ON
2-6437630-5	black	FLN2904	ON	ON
4-6437630-7	red	FLN2904	ON	ON

### Materials Chart

1	Case	Polyester Resin	Black
2	Common	C3602BD	Ep-Cu/Ni 3,Au F b
3	Fixed contact	C3602BD+Ag	Ep-Cu/Ni 3,Au F b
4	Frame	SUS	
5	Mounting Sleeve	C3602BD	Ep-Cu/Ni 3 b
6	Leaf spring	SUS	
7	Plate	SUS	
8	Button	Nylon Resin	
PART NO:		PART NAME:	
PART LIST		MATERIAL SURFACE:	
TOLERANCES UNLESS OTHERWISE SPECIFIED ACCORDING TO ISO 8015 and ISO 2768-F		DIMENSIONS: mm	
<small>test dimen. / Prüfmaß: □, auxiliary dimen. / Hilfsmaß: ( ), theor. dimen. / theor. Maß: □, production control dimen. / Fertigungskontrollmaß: [ ], dimen. for measure, technology / messtechn. rel. Maß: [ ]</small>			
DEPARTMENT		D/E	
DRAWER		04.012007 SA00874	
CHECKED			
APPROVED			
ECR-NO:	DATE	NAME	INFO
SCALE:	NAME:	DWG NO:	
<h2>Rocker Switch Double pole</h2> <h3>Small Rocker</h3>			©=1968519 OPTIONAL NO: Customer Drawing
REPLACEMENT FOR:	DWG LOC NO: F	SHEET: 1 OF 1	REVISION: A

THIS INFORMATION IS CONFIDENTIAL AND PROPRIETARY TO TYCO ELECTRONICS AUSTRIA GMBH AND ITS WORLDWIDE SUBSIDIARIES AND AFFILIATES. IT MAY NOT BE DISCLOSED TO ANYONE OTHER THAN TYCO ELECTRONICS AUSTRIA WITHOUT WRITTEN AUTHORIZATION FROM TYCO ELECTRONICS AUSTRIA.

# Mouser Electronics

Authorized Distributor

Click to View Pricing, Inventory, Delivery & Lifecycle Information:

[TE Connectivity:](#)

[FLN29WHITE04](#)