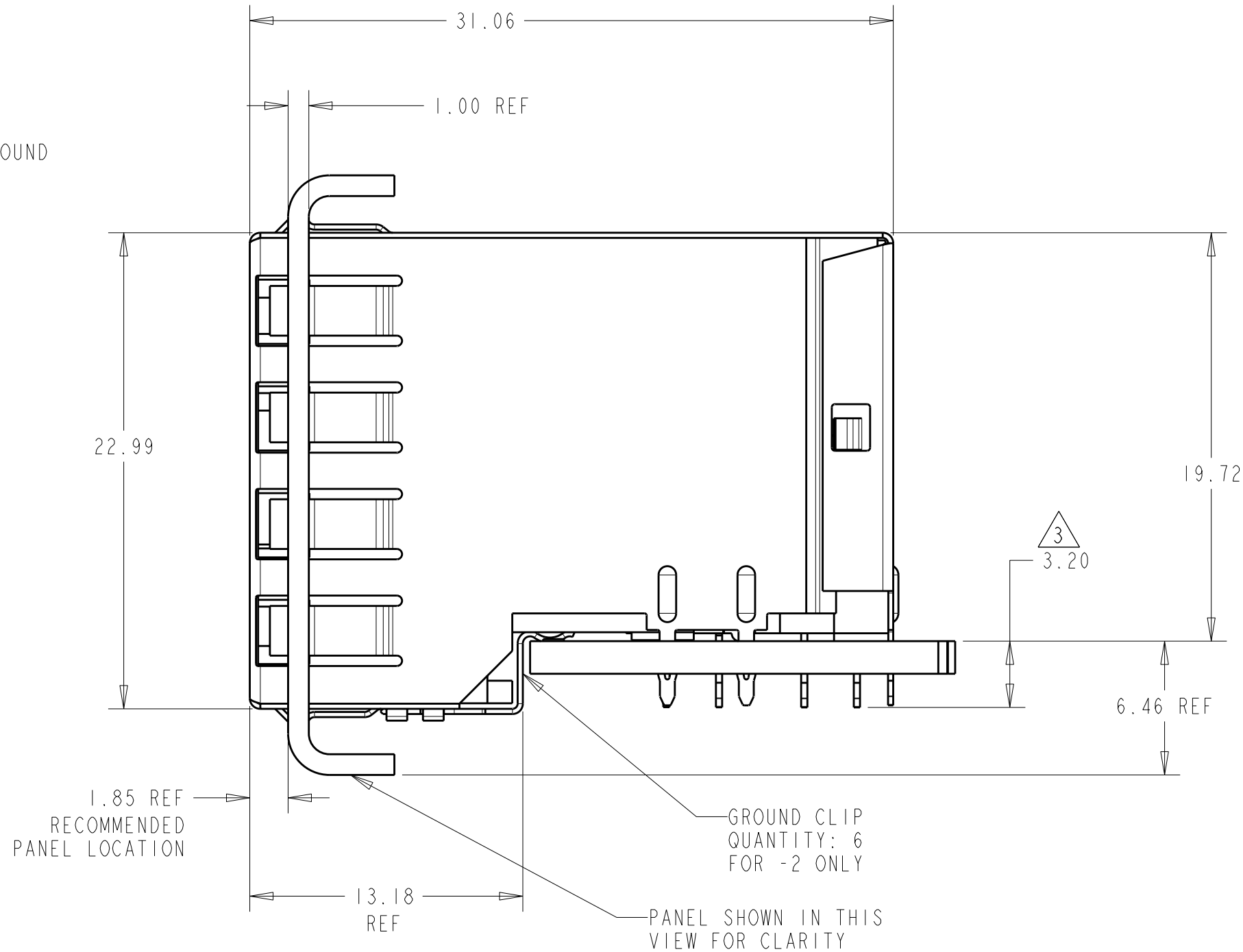
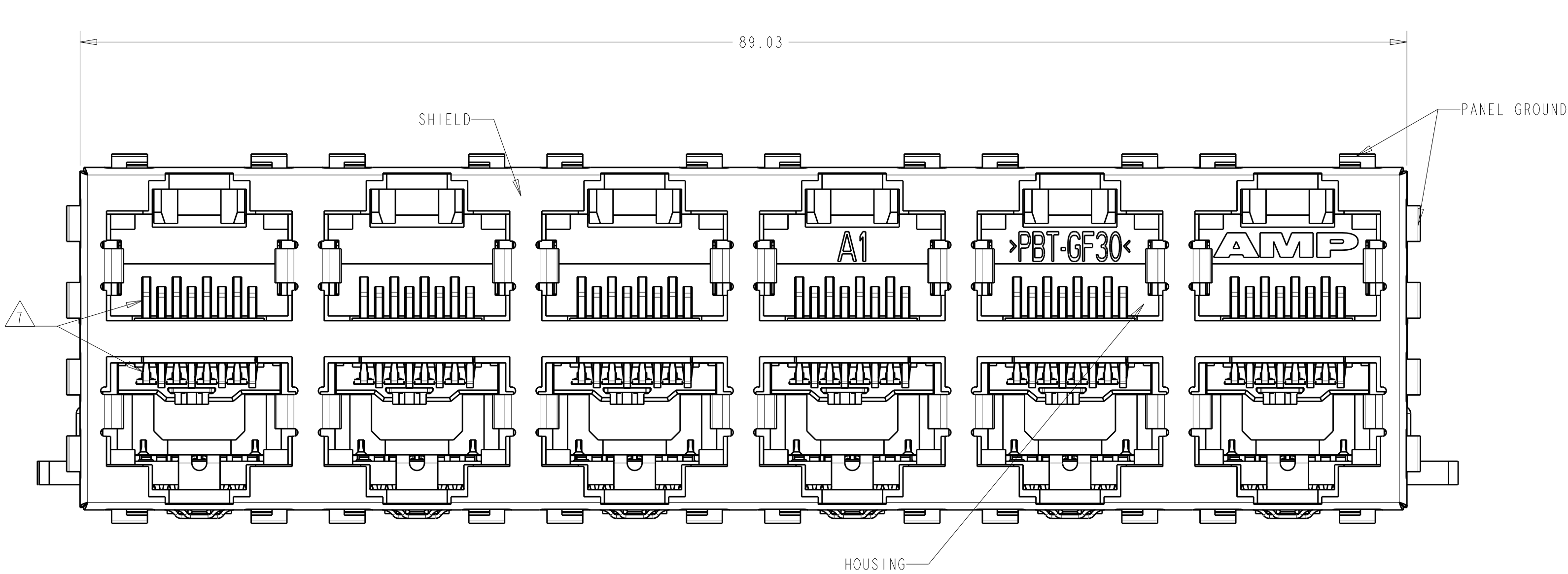


D

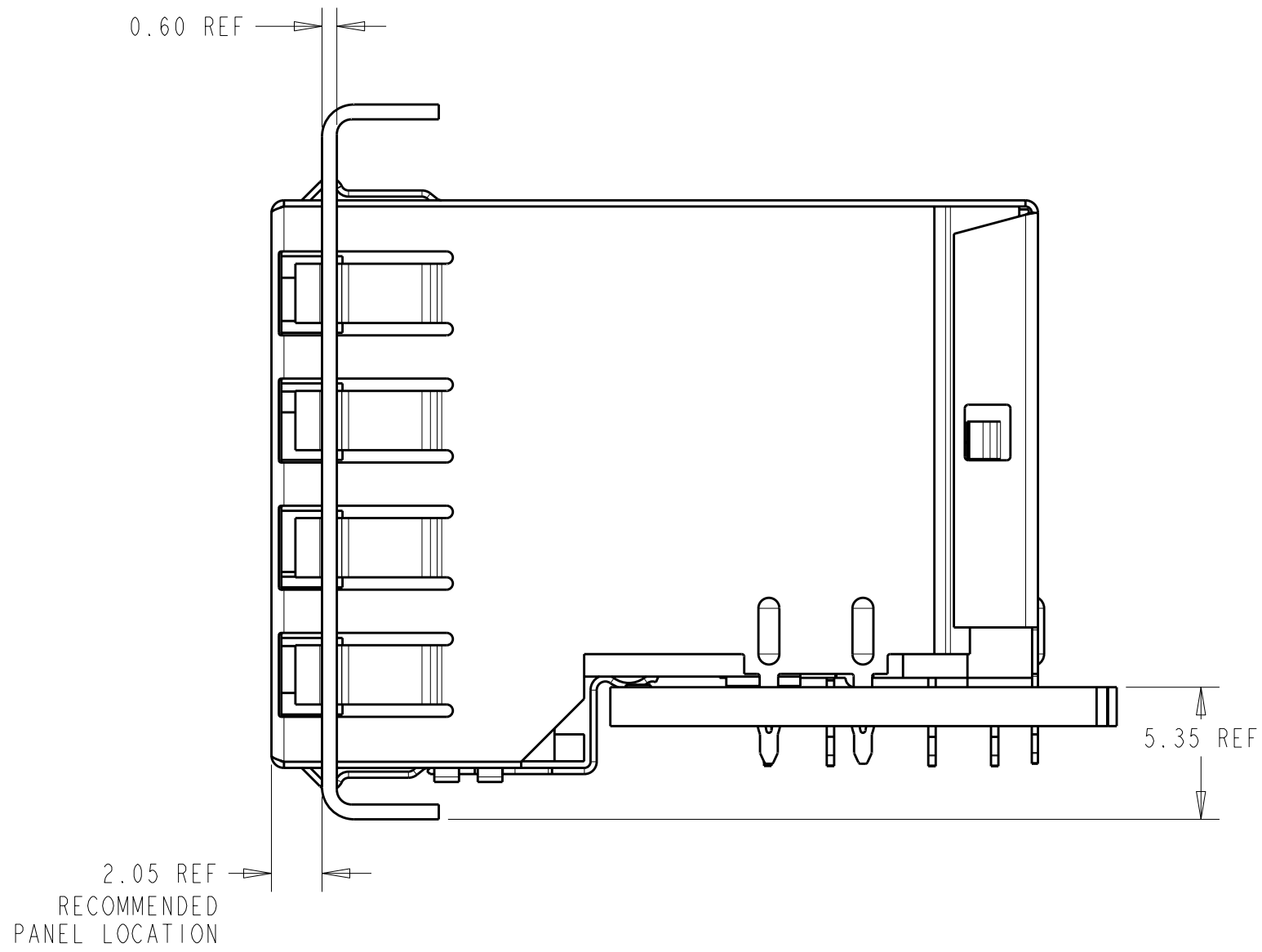
C

B

A

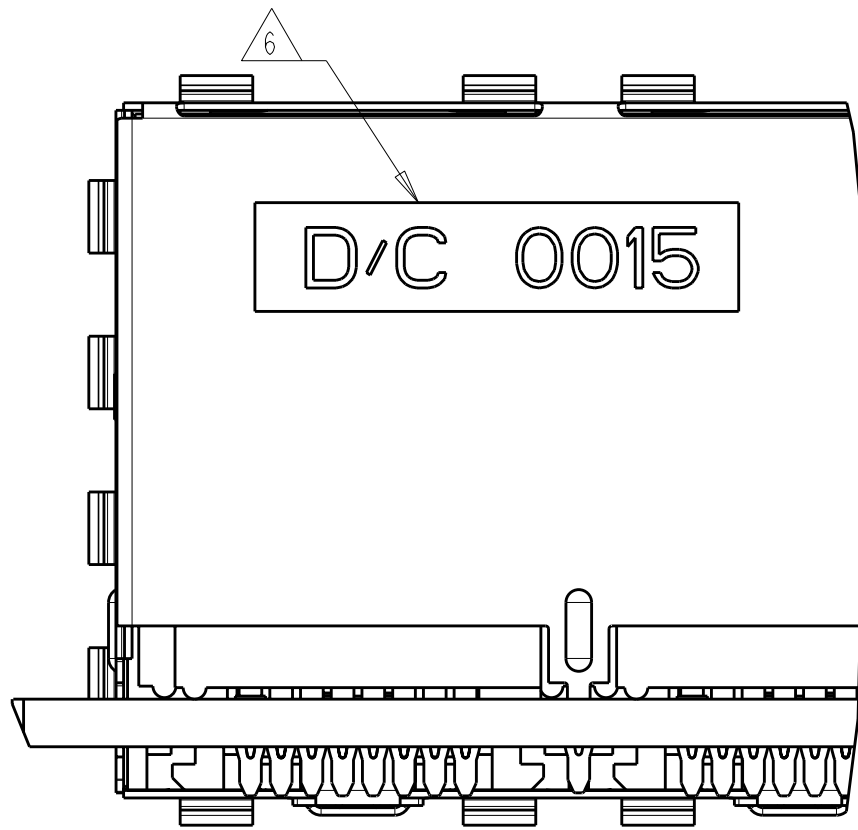


ATCA PANEL AND  
PRINTED CIRCUIT BOARD  
ASSEMBLY LAYOUT



AMC PANEL AND  
PRINTED CIRCUIT BOARD  
ASSEMBLY LAYOUT

LOC		DIST		REVISIONS					
AA		00		P	LYR	DESCRIPTION	DATE	DWN	APVD
					A	RELEASED	27OCT2006	LAM	JW
					B	ECO-07-001858	31JAN2007	LAM	JW
					C	ECR-08-020353	13AUG2008	AL	SY



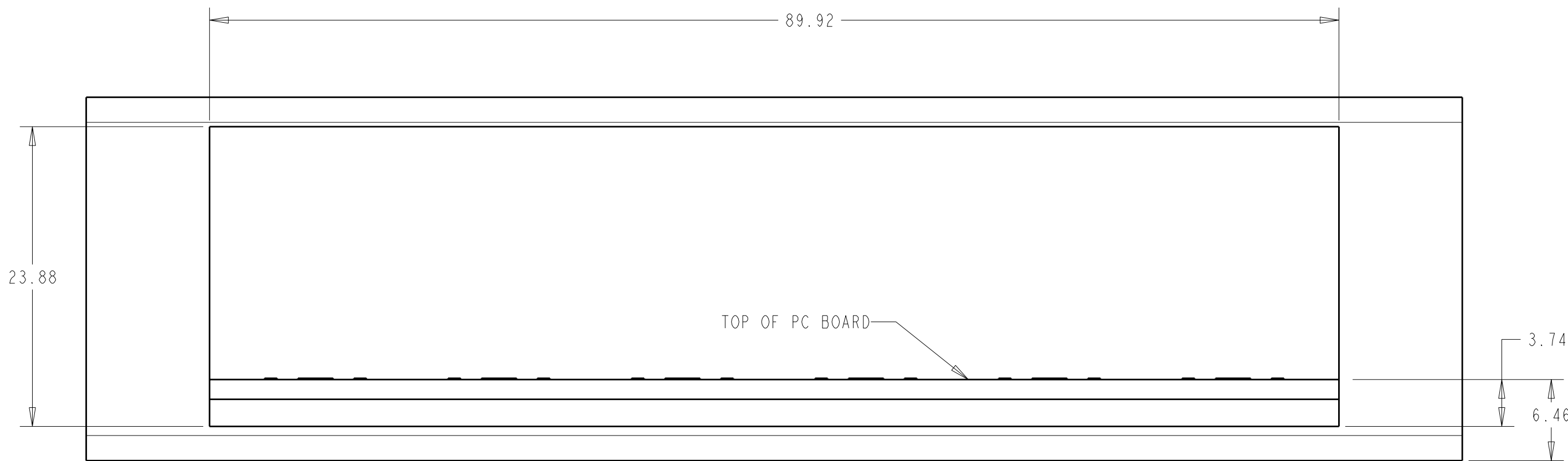
- MATERIAL:  
HOUSING:  
PBT POLYESTER, BLACK, UL 94V-0  
TERMINALS:  
0.33 THICK PHOSPHOR BRONZE PLATED WITH 1.27µm MINIMUM THICK  
HARD GOLD IN LOCALIZED AREA AND 2.0µm MINIMUM THICK  
MATTE TIN IN COMPLIANT PIN TERMINAL AREA  
OVER 1.27µm MINIMUM THICK NICKEL UNDERPLATE  
SHIELD:  
0.25 THICK COPPER ALLOY PLATED WITH 2.03µm MINIMUM TIN  
OVER 1.27 µm MINIMUM NICKEL  
GROUND CLIP: 0.25 THICK COPPER ALLOY PRE-PLATED WITH 2.03µm  
MINIMUM MATTE TIN OVER 1.27µm MINIMUM NICKEL
- JACK CAVITY CONFORMS TO FCC RULES AND REGULATIONS, PART 68  
SUBPART F.

- MAXIMUM PIN LENGTH 3.40 FROM TOP SURFACE OF PC BOARD
- FINISHED PLATED THROUGH HOLE DIAMETER - ANNULAR RING  
DIAMETER 1.3 TO 1.5
- DATUMS AND BASIC DIMENSIONS ESTABLISHED BY CUSTOMER
- DATE CODE LOCATED ON REAR OF PART APPROXIMATELY AS SHOWN
- CONTACTS ARE NOT INTENDED TO BE ALIGNED WITH EACH OTHER

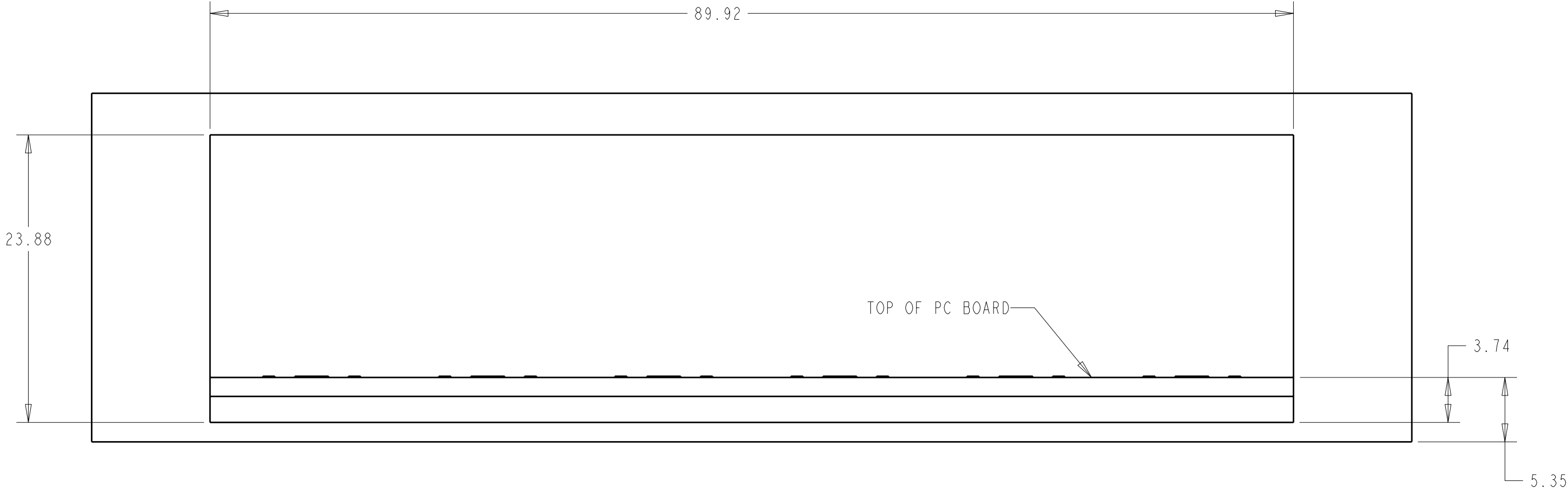
15.88	WITH GROUND CLIP	1888508-2
16.13	WITHOUT GROUND CLIP	1888508-1
M DIM	DESCRIPTION	PART NUMBER

TYPICAL DIMENSIONS TO CHANNELS TO CENTER FOR THIS ELECTRONIC CORPORATION TYPICAL DIMENSIONS TO CHANNELS TO CENTER FOR THIS ELECTRONIC CORPORATION TYPICAL DIMENSIONS TO CHANNELS TO CENTER FOR THIS ELECTRONIC CORPORATION		DWN L. A. MAYER 25OCT2006	Tyco Electronics Corporation Harrisburg, PA 17105-3608	
DIMENSIONS: mm		CHK J. WESTMAN 25OCT2006	NAME STACKED MODULAR JACK ASSEMBLY, 2 X 6, 8 POSN, RJ45, SHIELDED, PANEL GROUND, OFFSET, CAT 5	
TOLERANCES UNLESS OTHERWISE SPECIFIED:		APVD S. FLICKINGER 25OCT2006	SIZE CAGE CODE DRAWING NO	
9 PLC ± 1 PLC ± 3 PLC ±0.13 5 PLC ± 4 PLC ±		PRODUCT SPEC 108-1854	RESTRICTED TO	
ANGLES ±1°		APPLICATION SPEC 114-2160	A 1 00779 C-1888508	
FINISH SEE NOTE 1		WEIGHT -	CUSTOMER DRAWING	
SCALE 4:1		SHEET 1 OF 2		REV C

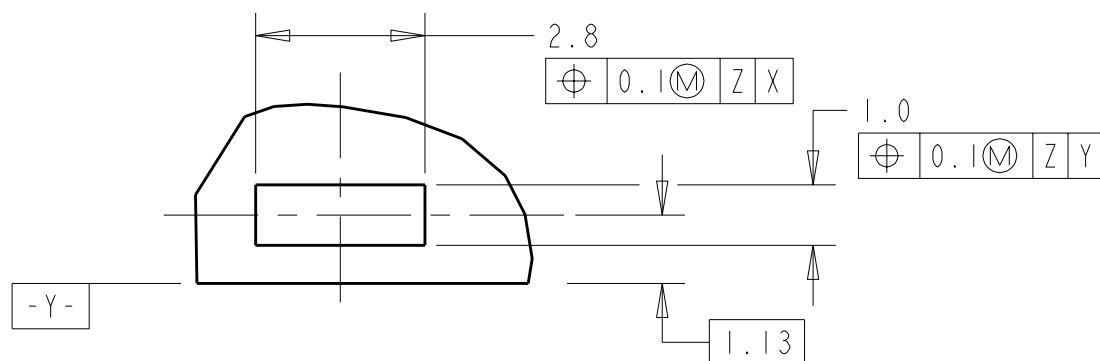
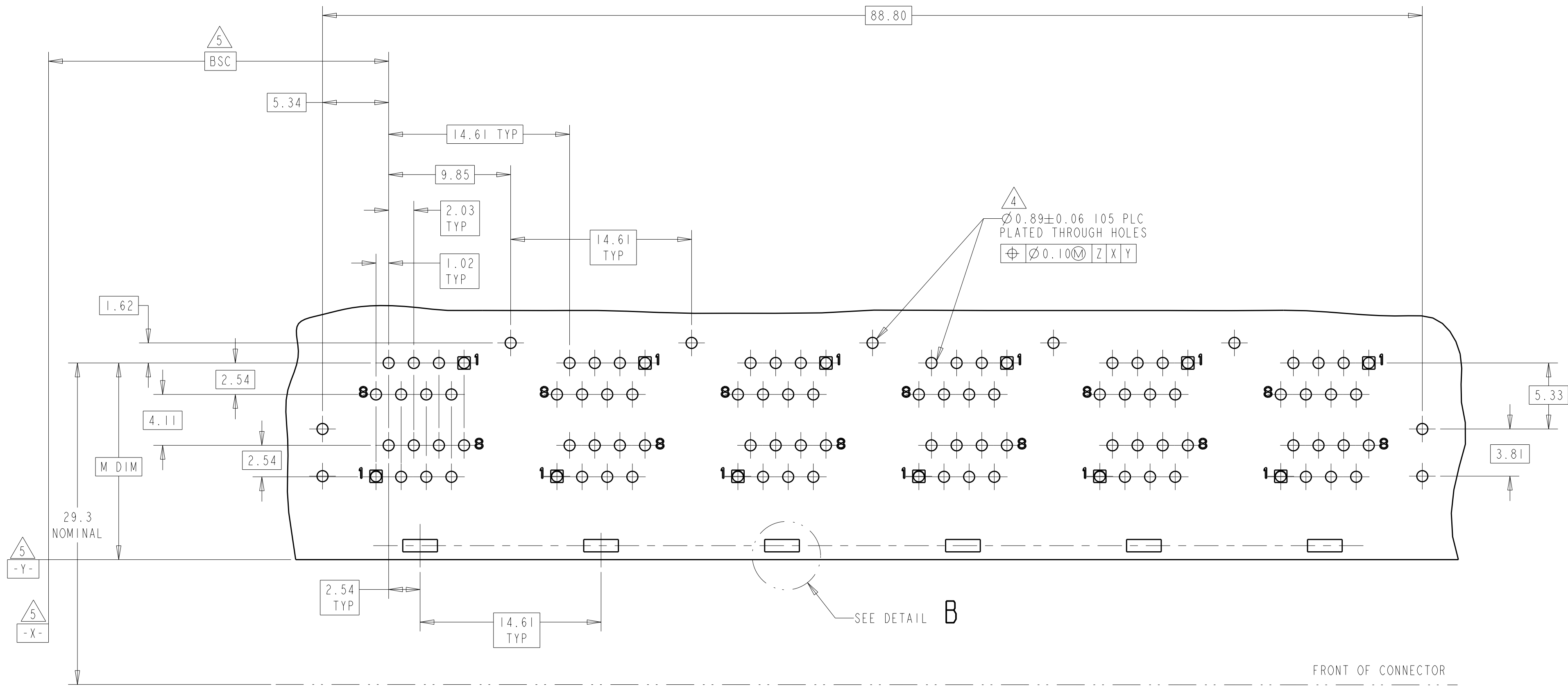
LOC		DIST		REVISIONS					
AA		00		DESCRIPTION			DATE	DWN	APVD
		P	LTR						
			-	SEE SHEET 1			-	-	-



ATCA PANEL AND  
PRINTED CIRCUIT BOARD LAYOUT  
SCALE 3:1



AMC PANEL AND  
PRINTED CIRCUIT BOARD LAYOUT  
SCALE 3:1



DETAIL B  
SCALE 8:1  
PLATED PADS REQUIRED FOR  
1888508-2 (PRODUCT WITH  
GROUNDING CLIPS)  
6 PLC

THIS DRAWING IS UNPUBLISHED. IT IS THE PROPERTY OF TYCO ELECTRONICS CORPORATION. IT IS TO BE USED ONLY FOR THE PURPOSES SPECIFIED. IT IS TO BE RETURNED TO TYCO ELECTRONICS CORPORATION IF NOT RETURNED BY THE USER. IT IS THE PROPERTY OF TYCO ELECTRONICS CORPORATION. IT IS TO BE USED ONLY FOR THE PURPOSES SPECIFIED. IT IS TO BE RETURNED TO TYCO ELECTRONICS CORPORATION IF NOT RETURNED BY THE USER.		DWN L. A. MAYER 25OCT2006		Tyco Electronics Corporation Harrisburg, PA 17105-3608	
DIMENSIONS: mm		CHK J. WESTMAN 25OCT2006		NAME STACKED MODULAR JACK ASSEMBLY, 2 X 6, 8 POSN, RJ45, SHIELDED, PANEL GROUND, OFFSET, CAT 5	
TOLERANCES UNLESS OTHERWISE SPECIFIED: 9 PLC ± 1 PLC ±0.13 5 PLC ± 4 PLC ± ANGLES ±1°		APVD S. FLICKINGER 25OCT2006		SIZE 108-1854	
MATERIAL SEE NOTE 1		APPLICATION SPEC 114-2160		CAGE CODE A100779	
FINISH SEE NOTE 1		WEIGHT -		RESTRICTED TO CUSTOMER DRAWING	
		SCALE 4:1		SHEET 2 OF 2	
				REV C	

# Mouser Electronics

Authorized Distributor

Click to View Pricing, Inventory, Delivery & Lifecycle Information:

[TE Connectivity:](#)

[1888508-1](#)