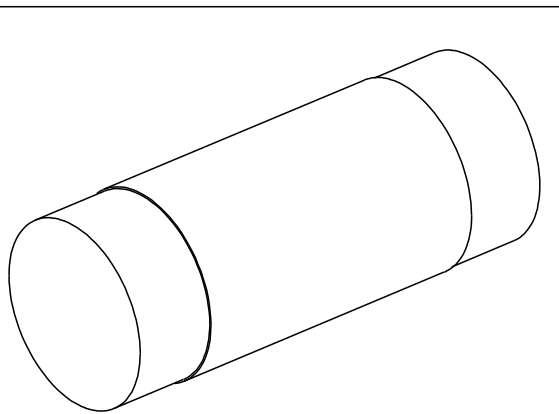
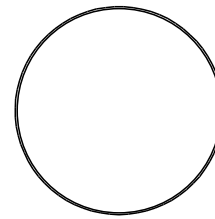
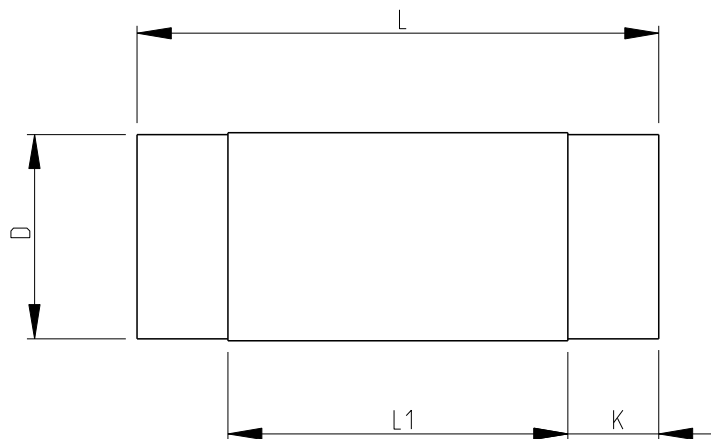


LOC	DIST	REVISIONS					
E	B	P	LTR	DESCRIPTION	DATE	DWN	APVD
			BA	NEW RELEASE	05MAY2010	PT	St.P

FOR FURTHER INFORMATION SEE DATA SHEET OF  
SMA-SERIES MELF RESISTORS



RoHS Compliant

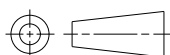
Codes	L	ØD	K	L1 Min
0204	$3.45 \pm 0.1$	$1.35 \pm 0.1$	$0.6 \pm 0.1$	2.00
0207	$5.90 \pm 0.1$	$2.20 \pm 0.1$	$1.0 \pm 0.1$	3.40

DIMENSIONS:

mm

TOLERANCES UNLESS  
OTHERWISE SPECIFIED:

0 PLC  $\pm 0.2$   
1 PLC  $\pm 0.1$   
2 PLC  $\pm$   
3 PLC  $\pm$   
4 PLC  $\pm$   
ANGLES  $\pm 5^\circ$



DWN PARUSURAM.T 05MAY2010

CHK SUBHASH.M 05MAY2010

APVD STEPHEN.P 05MAY2010

PRODUCT SPEC

-

APPLICATION SPEC

-

WEIGHT

-

MATERIAL

-

FINISH

-



TE Connectivity

NAME

MELF RESISTORS  
SMA SERIES

SIZE

CAGE CODE

DRAWING NO

RESTRICTED TO

A 4

00779

C-1879283

-

CUSTOMER DRAWING

SCALE 40:1

SHEET 1 OF 1

REV BA

2008

RELEASED FOR PUBLICATION

THIS DRAWING IS UNPUBLISHED.

ALL RIGHTS RESERVED.

© COPYRIGHT 2008

# Mouser Electronics

Authorized Distributor

Click to View Pricing, Inventory, Delivery & Lifecycle Information:

[TE Connectivity:](#)

[SMA0204FTEV2703](#)