

8				7			
THIS DRAWING IS UNPUBLISHED.				RELEASED FOR PUBLICATION			
COPYRIGHT 20				BY TYCO ELECTRONICS CORPORATION, ALL RIGHTS RESERVED.			
PART NUMBER	REV	FIRST USED	POWER UNIT	FEED TYPE	DESCRIPTION		
1855618-1	A	122500-1	LEADMAKER	POST FEED	CUTS CARRIER		
1855618-2	A	565435-5	BENCH MODEL K	PRE FEED	CUTS CARRIER		
1855618-3	A	354500-1	BENCH MODEL G	PRE FEED	CUTS CARRIER		
1855618-6	A	122500-1	LEADMAKER	POST FEED	CONTINUOUS CARRIER		
7-1855618-7	A	-	-	-	SPARE PARTS		

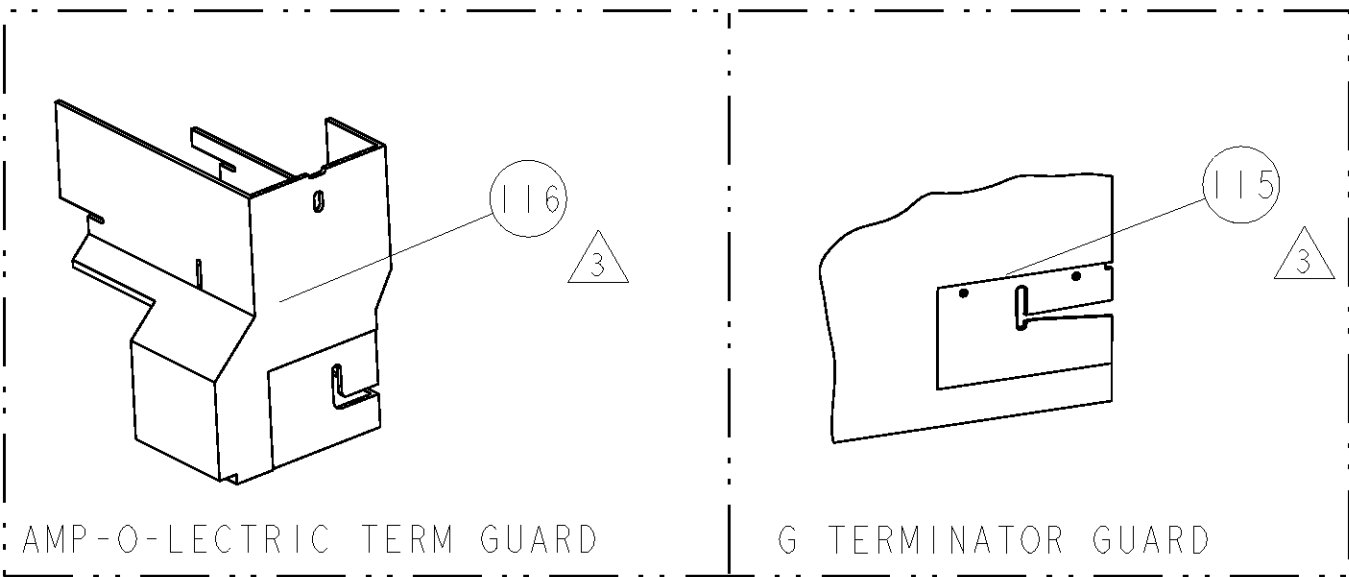
RECOMMENDED SPARE PARTS

GREASE LIGHTLY

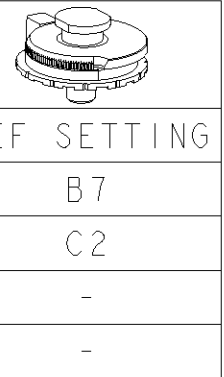
GUARD MUST BE IN PLACE WHEN OPERATING APPLICATOR IN A BENCH MACHINE.

TERMINAL LUBRICANT IS RECOMMENDED.

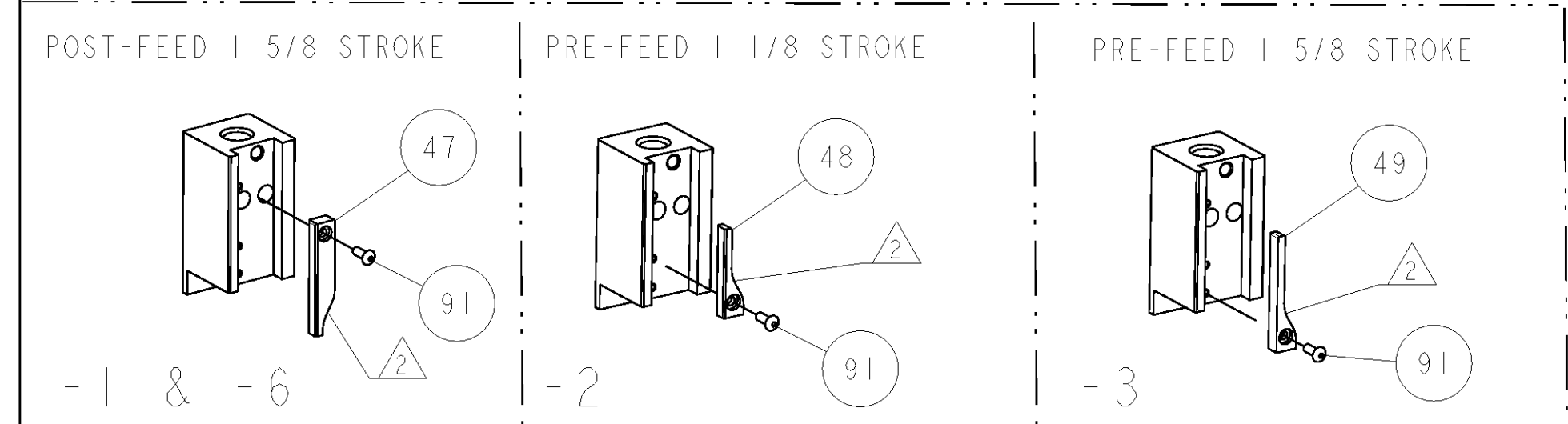
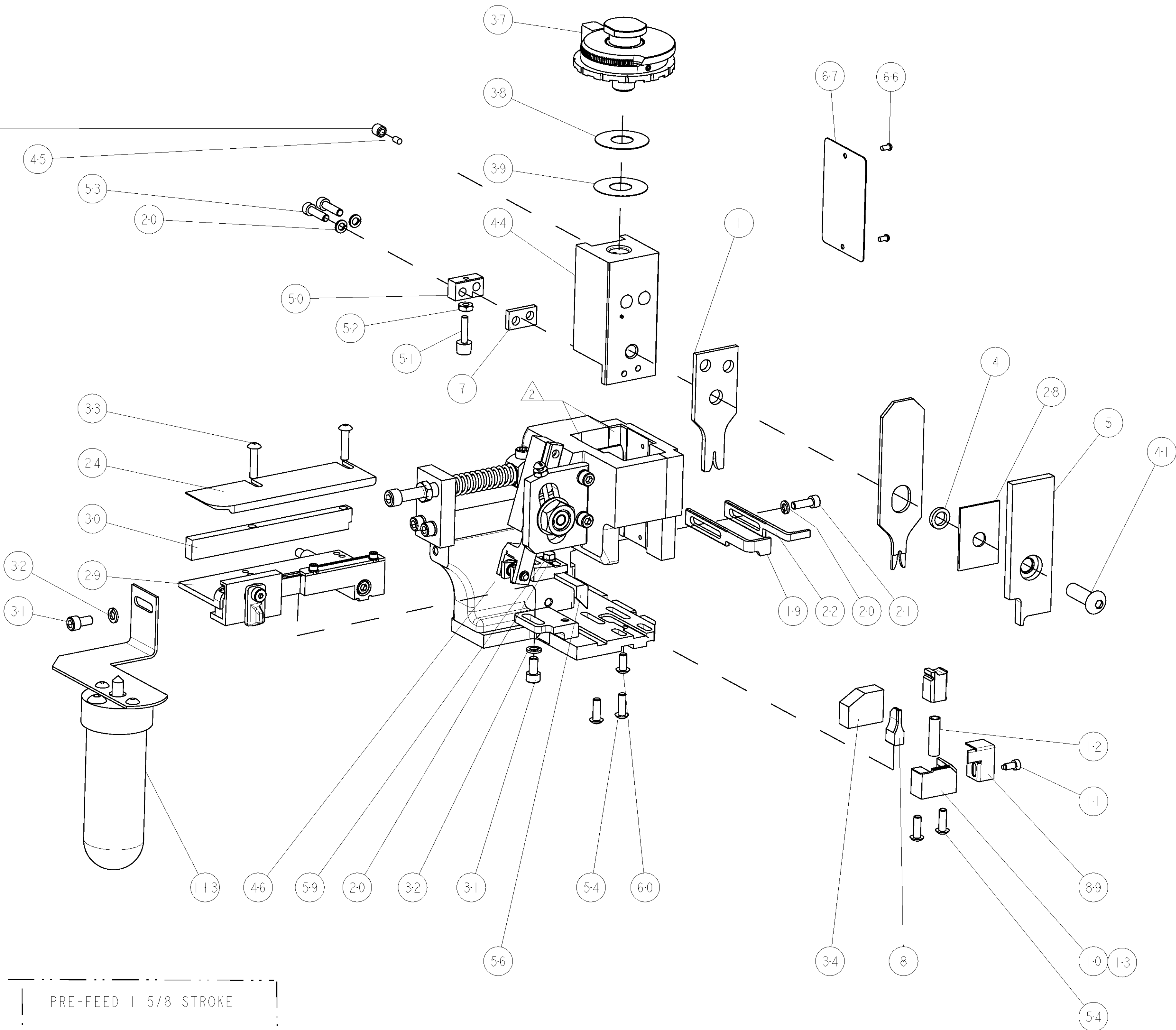
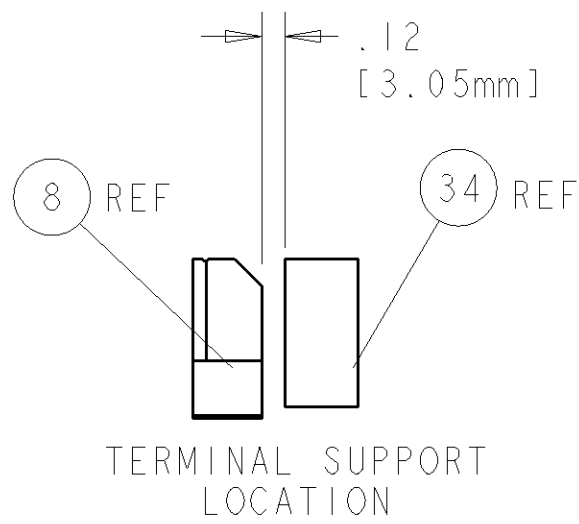
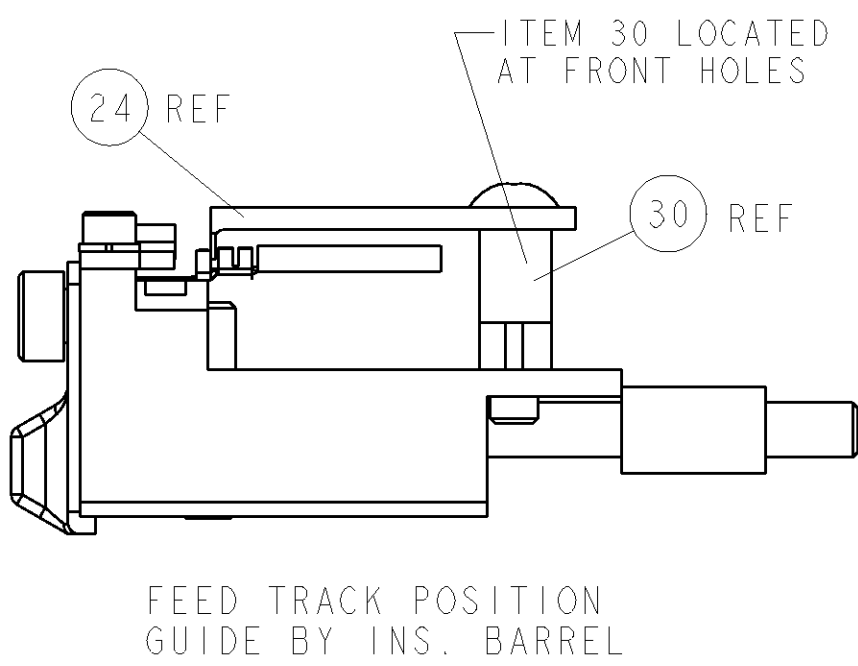
*** WARNING**
ON INSTALLATION, SET WIRE DISC TO LARGEST WIRE SIZE SETTING. USE OF SETTINGS BELOW MIN. REQUIRED CRIMP HEIGHT SETTING WILL CAUSE DAMAGE TO CRIMP TOOLING.



TERMINAL NAME: CRIMP SOCKET & PIN					
TE PN	SOURIAU	SOURIAU TERMINAL - TE CRIMP SPECS			
2113162	CF10SCI8RF				
-	CF10PCI8RF				
-	-	CRIMP HEIGHT		WIRE SIZE	
-	-	1.27mm+.05/- .05[.050+.002/- .002]		20AWG or 0.6mm2	
-	-	1.14mm+.05/- .05[.045+.002/- .002]		22AWG or 0.35mm2	
-	-				
-	-				
-	-	CRIMP	SIZE	TYPE	RANGE
-	-	-	-	-	-
-	-	WIRE	1.40mm [.055]	O	20-22
-	-	INSUL	2.03mm [.080]	O	1.2-2.1mm
WIRE STRIP LENGTH 3.05-3.81	TERM APPL SPEC NONE	FEED 8.89	APPLICATOR INSTRUCTIONS 408-8040		SET UP GAGE 458637-1



LOC		DIST		REVISIONS			
A	66	P	LYR	DESCRIPTION	DATE	DWN	APVD
		A		RELEASED	04FEB2011	KS	TE



3	-	-	-	REF	-	..	455749-1	GUARD WINDOW	116
3	-	-	-	REF	-	..	679532-1	INSERT, GUARD	115
-	-	-	-	-	-	..	1-465184-0	LUBRICATOR ASSY	113
-	1	1	1	1	1	-	1-21002-7	SCR, BTN SKT HD CAP 6-32 X .375	91
-	1	1	1	1	1	-	318563-1	GUARD, FRONT CHIP	89
-	1	1	1	1	1	-	4088040	SF APPL INST 408-8040	72
-	1	1	1	1	1	-	217238-1	GENERAL INSTRUCTION PKG	71
-	1	1	1	1	1	-	461264-5	PLATE, IDENTIFICATION	67
-	2	2	2	2	2	-	21017-2	SCREW, DRIVE	66
-	1	1	1	1	1	-	21009-2	SCR, SET, SELF LOCKING 1/4-20 X .250	63
-	1	1	1	1	1	-	22733-8	SCR, BHSC, SELF-LOCKING, 8-32 X .375	60
-	1	1	1	1	1	-	2-22603-0	SCR, HEX HD CAP 8-32 X .312	59
-	1	1	1	1	1	-	458537-2	PAWL, FEED	56
-	4	4	4	4	4	-	2-21002-2	SCR, BTN SKT HD CAP 8-32 X .500	54
-	2	2	2	2	2	-	2-21000-8	SCR, SKT HD CAP 8-32 X .625	53
-	1	1	1	1	1	-	21018-5	NUT, HEX, REG 6-32	52
-	1	1	1	1	1	-	811242-2	BUMPER, HOLD DOWN	51
-	1	1	1	1	1	-	690753-1	SPACER, TONKER	50
-	-	-	-	-	-	..	690602-6	CAM, PRE FEED, 1 5/8	49
-	-	-	-	-	-	..	690602-5	CAM, PRE FEED, 1 1/8	48
-	1	-	-	-	-	-	690501-4	CAM, POST-FEED 1 5/8	47
-	1	1	1	1	1	-	459456-1	APPL. BASIC SUB ASSY (SIDE WISE MOCA)	46
-	1	1	1	1	1	-	690191-1	PLUG, NYLON	45
-	1	1	1	1	1	-	455673-1	RAM, SIDE FEED	44
-	1	1	1	1	1	-	7-21002-9	SCR, BTN SKT HD CAP 5/16-24 X 1.00	41
-	1	1	1	1	1	-	690125-1	SHIM SUB-ASSY	39
-	1	1	1	1	1	-	1-469367-0	SHIM	38
-	1	1	1	1	1	-	879103-3	FINE ADJUST HEAD ASSEMBLY	37
-	1	1	1	1	1	-	690786-1	TERMINAL SUPPORT	34
-	2	2	2	2	2	-	2-21002-4	SCR, BTN SKT HD CAP 8-32 X .750	33
-	1	1	1	1	1	-	21024-5	WASHER, SPRG LOCK, REG NO 10	32
-	1	1	2	1	-	-	3-21000-4	SCR, SKT HD CAP 10-32 X .375	31
-	1	1	1	1	1	-	1-1320908-5	SPACER, STRIP GUIDE	30
-	1	1	1	1	1	-	1633091-1	ASSEMBLY, STRIP GUIDE	29
-	1	1	1	1	1	-	1-455888-0	SPACER, CRIMPER	28
-	1	1	1	1	1	-	1320928-1	PLATE, STRIP GUIDE	24
-	1	-	-	-	-	-	690472-2	STRIPPER	22
-	1	1	1	1	1	-	2-21000-7	SCR, SKT HD CAP 8-32 X .500	21
-	4	4	4	4	4	-	21024-4	WASHER, SPRG LOCK, REG NO 8	20
-	-	-	-	-	-	-	691353-1	STRIPPER	19
-	1	-	-	-	-	-	679625-2	SHEAR HOLDER, FRONT (NO CUT)	13
-	1	1	1	1	1	-	3-22280-3	SPRING, COMPRESSION	12
-	1	1	1	1	1	-	690461-2	STOP, SHEAR	11
-	-	-	-	-	-	-	1-690459-0	SHEAR HOLDER, FRONT	10
-	1	1	1	1	1	-	462006-6	FLOATING SHEAR, FRONT	9
1	1	1	1	1	1	-	3-1633106-2	ANVIL, COMBINATION .055	8
-	1	1	1	1	1	-	240641-5	SPACER	7
-	-	-	-	-	-	..	-	-	6
-	1	1	1	1	1	-	2-455889-0	DEPRESSOR, SHEAR	5
-	1	1	1	1	1	-	1-238011-0	BLOCK, CRIMPER SPACER	4
1	1	1	1	1	1	-	1633398-4	CRIMPER, INSULATION O	3
-	-	-	-	-	-	..	-	-	2
1	1	1	1	1	1	-	4-459492-6	CRIMPER, WIRE O	1

DIMENSIONS:		TOLERANCES UNLESS OTHERWISE SPECIFIED:		DWN		STAKEM		Tyco Electronics	
INCHES		9 PLC ±.01		01DEC2010		01DEC2010		Tyco Electronics	
		10 PLC ±.01		01DEC2010		01DEC2010		Harrisburg, PA 17105-3608	
		11 PLC ±.01							
		12 PLC ±.01							
		13 PLC ±.01							
		14 PLC ±.01							
		15 PLC ±.01							
		16 PLC ±.01							
		17 PLC ±.01							
		18 PLC ±.01							
		19 PLC ±.01							
		20 PLC ±.01							
		21 PLC ±.01							
		22 PLC ±.01							
		23 PLC ±.01							
		24 PLC ±.01							
		25 PLC ±.01							
		26 PLC ±.01							
		27 PLC ±.01							
		28 PLC ±.01							
		29 PLC ±.01							
		30 PLC ±.01							
		31 PLC ±.01							
		32 PLC ±.01							
		33 PLC ±.01							
		34 PLC ±.01							
		35 PLC ±.01							
		36 PLC ±.01							
		37 PLC ±.01							
		38 PLC ±.01							
		39 PLC ±.01							
		40 PLC ±.01							
		41 PLC ±.01							
		42 PLC ±.01							
		43 PLC ±.01							
		44 PLC ±.01							
		45 PLC ±.01							
		46 PLC ±.01							

Mouser Electronics

Authorized Distributor

Click to View Pricing, Inventory, Delivery & Lifecycle Information:

[TE Connectivity:](#)

[1855618-3](#)