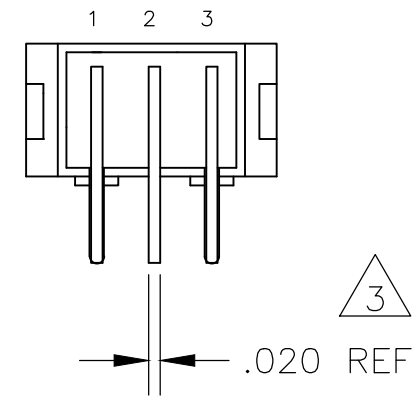
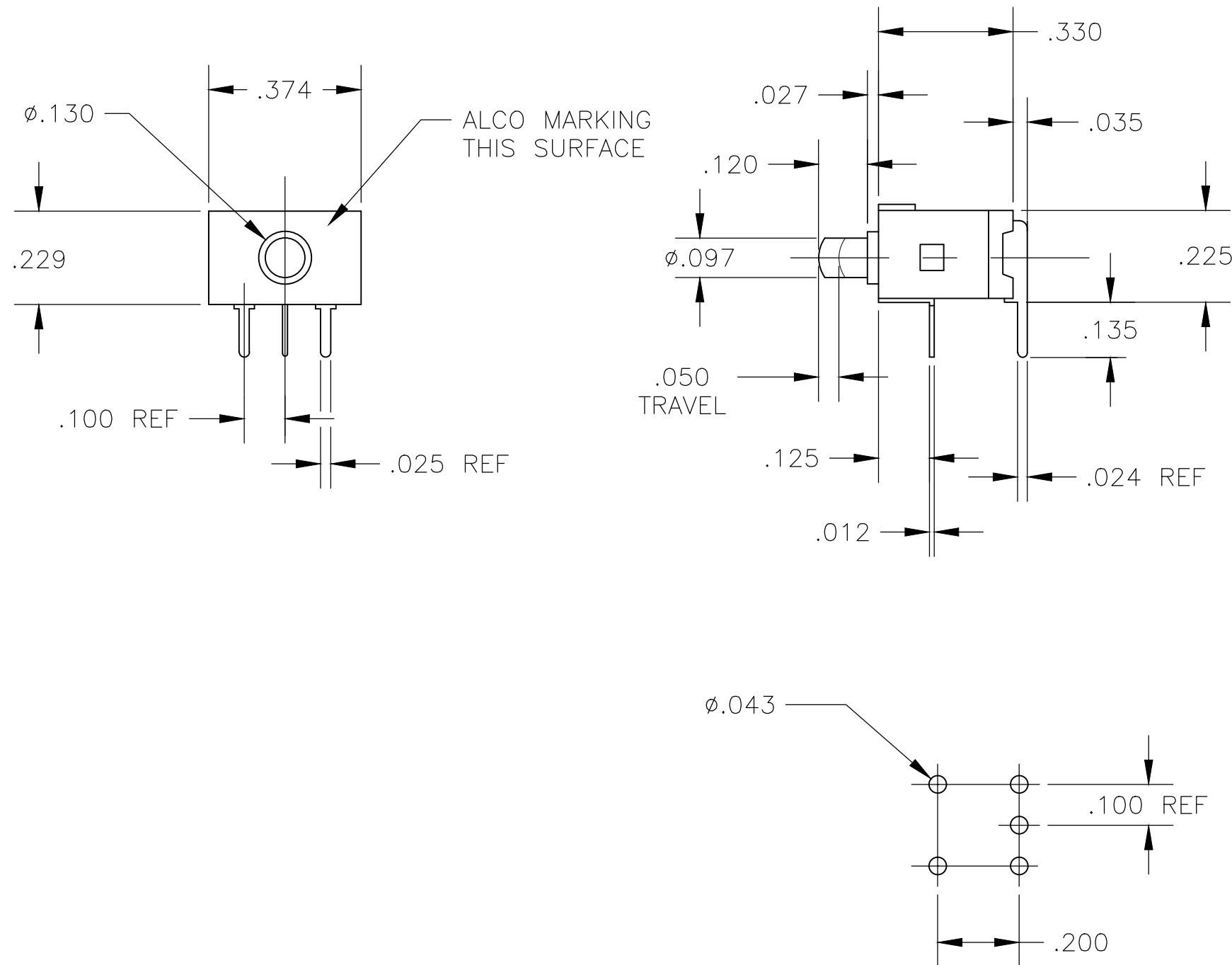








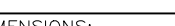
THIS DRAWING IS UNPUBLISHED.	RELEASED FOR PUBLICATION	- , - .
© COPYRIGHT - By - ALL RIGHTS RESERVED.		

REVISIONS					
P	LTR	DESCRIPTION	DATE	DWN	APVD
	B2	REVISED PER ECO-17-001762	12APR2017	RK	AS



- 1 TERMINAL NUMBERS ARE FOR REFERENCE ONLY AND DO NOT  
APPEAR ON SWITCHES.
- 2 ALL MATERIALS AND FINISHES SHALL COMPLY WITH EU DIRECTIVE  
2003/95/EC OF 27JAN2003 (ROHS).
-  3 NO CENTER TERMINAL ON SINGLE THROW SWITCHES.

OBSOLETE	2-1	2-3	(On)	On	.120	RA	2	1	APA1FGRA04	1825174-3
	1-3	Off	(On)	Off	.120	RA	1	1	APA1CGRA04	1825174-2
	Off	1-3	(Off)	On	.120	RA	1	1	APA1BGRA04	1825174-1
					ACTUATOR LENGTH	TERMINAL	THROWS	POLES	ALCO P/N	TE P/N
TERMINALS CONNECTED			FUNCTION							

THIS DRAWING IS A CONTROLLED DOCUMENT.		DWN R BROWN 17MAY05 CHK M ZITTO 17MAY05 APVD M ZITTO 17MAY05		 TE Connectivity	
DIMENSIONS: INCHES 		TOLERANCES UNLESS OTHERWISE SPECIFIED: 0 PLC ± - 1 PLC ± - 2 PLC ± - 3 PLC ± .010 4 PLC ± - ANGLES ± 0°30'		NAME SWITCH, PUSHBUTTON, APA SERIES, RA TERMINALS, 1 POLE	
MATERIAL		FINISH		SIZE A2	
SEE TABLE		SEE TABLE		CAGE CODE 00779	
		WEIGHT 0.000000		DRAWING NO C-1825174	
CUSTOMER DRAWING				SCALE 3:1	
				SHEET 1 OF 1	
				REV B2	

# Mouser Electronics

Authorized Distributor

Click to View Pricing, Inventory, Delivery & Lifecycle Information:

[TE Connectivity:](#)

[APA1FGRA](#) [APA1FGRA04](#) [APA1CGRA04](#)