

8

7

6

5

4

3

2

1

THIS DRAWING IS UNPUBLISHED.

RELEASED FOR PUBLICATION

ALL RIGHTS RESERVED.

LOCAD

DIST00

REV

DESCRIPTION

DATE

DWN

APVD

AD

00

A2

REVISED PER ECO-15-004048

17MAR2015

NK

RH

Component name	Base material	Finish
Case	LCP, black, UL94 V-0	
Terminal, wire lug (gold)	Brass	Gold over nickel
Terminal, PC, RA & VRA (gold)	Brass	Gold over nickel in contact area, Tin over nickel in solder area
Terminal, PC & wire lug (silver)	Silver clad copper	Silver over nickel
Contact (gold)	Copper alloy or brass	Gold over nickel
Contact (silver)	Silver clad copper or copper	Silver over nickel
Frame	Steel	Tin over copper
Spring	Music wire	
Plunger Button	Nylon 6/6, black, red or blue. UL94 HB (extended) or UL94V-2 (flush)	
Support bracket (RA*ES versions only)	Brass	Tin over copper
Support bracket, VRA	Steel	Tin over copper
Bushing	Brass	Nickel over copper
ES Housing (ES versions)	Nylon 6/6, natural, UL94 V-2	
ES boot (ES versions)	Vinyl plastisol, black	

Specifications	
Rating	Gold: .4VA max. @ 20VDC or peak AC resistive Silver: 1 A @ 125VAC or 28 VDC resistive
Initial termination resistance	20 milliohms max.
Insulation resistance	1,000 Megohms min @ 500 VDC
Dielectric strength	1,000 volts RMS at sea lever
Timing	Break before make
Plunger travel	.030
Actuation force	50 to 400 grams
Life expectancy	.4 VA, 1 pole: 100,000 .4 VA, 2 poles: 80,000 1 A, 1 pole: 60,000 1 A, 2 poles: 50,000
Operating temperature	-30° C to +65° C
Storage temperature	-30° C to +65° C
Terminal seal	Single pole: epoxy Double pole: epoxy optional

Model	Actuator	Poles	Rating	Function	Plating	Terminations	Process Seal	Button color	04
TPB	Blank = extended	1	1 = Gold .4VA	C = SPST momentary	G = Gold	Blank = Wire lug	ES = process sealed 2	0 = Black	
	F = flush	2 (1+1)	3 = Silver 1 Amp 1	F = SPDT momentary	Blank = Silver 1	PC = printed circuit		2 = Red	
		2		M = DPST momentary		RA = right angle 2		6 = Blue	
				R = DPDT momentary		VRA = vertical right angle 3			

NOTES:
1. Silver only available in wire lug and pc terminations
2. RAES available with B and C bushing only
3. VRA only available in single pole

P/N	Alco P/N	Flush Actuator?	Poles	Throws	Plating	Terminals	Process sealed?	Button Color	Function		Connected Terminals		Dim A
									ALCO	ALCO	ALCO	ALCO	
1825097-1	TPB11CGPC004	no	1	1	Gold	PC	No	Black	Off	Mom	Off	1-3	.133
1825097-2	TPB11CGPC204	no	1	1	Gold	PC	No	Red	Off	Mom	Off	1-3	.133
1825097-3	TPB11CGPCES004	no	1	1	Gold	PC	yes	Black	Off	Mom	Off	1-3	.133
1825097-6	TPB11CGRA004	no	1	1	Gold	Right Angle	No	Black	Off	Mom	Off	1-3	.133
1825097-4	TPB11CGRA204	no	1	1	Gold	Right Angle	No	Red	Off	Mom	Off	1-3	.133
1825097-5	TPB11CGRAES004	no	1	1	Gold	Right Angle	yes	Black	Off	Mom	Off	1-3	.133
1825097-7	TPB11CGRAES204	no	1	1	Gold	Right Angle	yes	Red	Off	Mom	Off	1-3	.133
1825097-8	TPB11CGVRA004	no	1	1	Gold	VRA	No	Black	Off	Mom	Off	1-3	.117
1825097-9	TPB11FGPC004	no	1	2	Gold	PC	No	Black	On	Mom	1-2	2-3	.133
1-1825097-0	TPB11FGPCES204	no	1	2	Gold	PC	yes	Red	On	Mom	1-2	2-3	.133
1-1825097-1	TPB11FGRA004	no	1	2	Gold	Right Angle	No	Black	On	Mom	1-2	2-3	.133
1-1825097-2	TPB11FGRA204	no	1	2	Gold	Right Angle	No	Red	On	Mom	1-2	2-3	.133
1-1825097-3	TPB11FGRA604	no	1	2	Gold	Right Angle	No	Blue	On	Mom	1-2	2-3	.133
1-1825097-4	TPB11FGRAES004	no	1	2	Gold	Right Angle	yes	Black	On	Mom	1-2	2-3	.133
1-1825097-5	TPB11FGRAES604	no	1	2	Gold	Right Angle	yes	Blue	On	Mom	1-2	2-3	.133
1-1825097-6	TPB11FGVRA004	no	1	2	Gold	VRA	No	Black	On	Mom	1-2	2-3	.117
1-1825097-7	TPB21MGPC004	no	2	1	Gold	PC	No	Black	Off	Mom	Off	1-3, 4-6	.133
1-1825097-8	TPB21MGPC204	no	2	1	Gold	PC	No	Red	Off	Mom	Off	1-3, 4-6	.133
2-1825097-8	TPB21MGRA004	no	2	1	Gold	Right Angle	No	Black	Off	Mom	Off	1-3, 4-6	.133
1-1825097-9	TPB21RGRA004	no	2	2	Gold	Right Angle	No	Black	On	Mom	1-2, 4-5	2-3, 5-6	.133
2-1825097-0	TPBF11CGPCES004	yes	1	1	Gold	PC	yes	Black	Off	Mom	Off	1-3	.000
2-1825097-1	TPBF11CGRA004	yes	1	1	Gold	Right Angle	No	Black	Off	Mom	Off	1-3	.000
2-1825097-2	TPBF11CGRAES004	yes	1	1	Gold	Right Angle	yes	Black	Off	Mom	Off	1-3	.000
2-1825097-3	TPBF11FGPCES004	yes	1	2	Gold	PC	yes	Black	On	Mom	1-2	2-3	.000
2-1825097-4	TPBF11FGRA004	yes	1	2	Gold	Right Angle	No	Black	On	Mom	1-2	2-3	.000
2-1825097-5	TPBF11FGRA204	yes	1	2	Gold	Right Angle	No	Red	On	Mom	1-2	2-3	.000
2-1825097-6	TPBF11FGRAES004	yes	1	2	Gold	Right Angle	yes	Black	On	Mom	1-2	2-3	.000

THIS DRAWING IS A CONTROLLED DOCUMENT.

DIMENSIONS: INCHES

TOLERANCES UNLESS OTHERWISE SPECIFIED:

0 PL ± .010

1 PL ± .010

2 PL ± .010

3 PL ± .010

4 PL ± .010

ANGLES ± .010

MATERIAL - FINISH -

DWN M.BINNER 20JUL05

CHK M.ZITTO 21JUL05

APVD M.ZITTO 21JUL05

PRODUCT SPEC

APPLICATION SPEC

WEIGHT -

CUSTOMER DRAWING

DWN M.BINNER 20JUL05

CHK M.ZITTO 21JUL05

APVD M.ZITTO 21JUL05

PRODUCT SPEC

APPLICATION SPEC

WEIGHT -

CUSTOMER DRAWING

TE Connectivity

PUSHBUTTON SWITCH, TPB SERIES

SIZE 1.00779

CAGE CODE 1825097

DRAWING NO 1825097

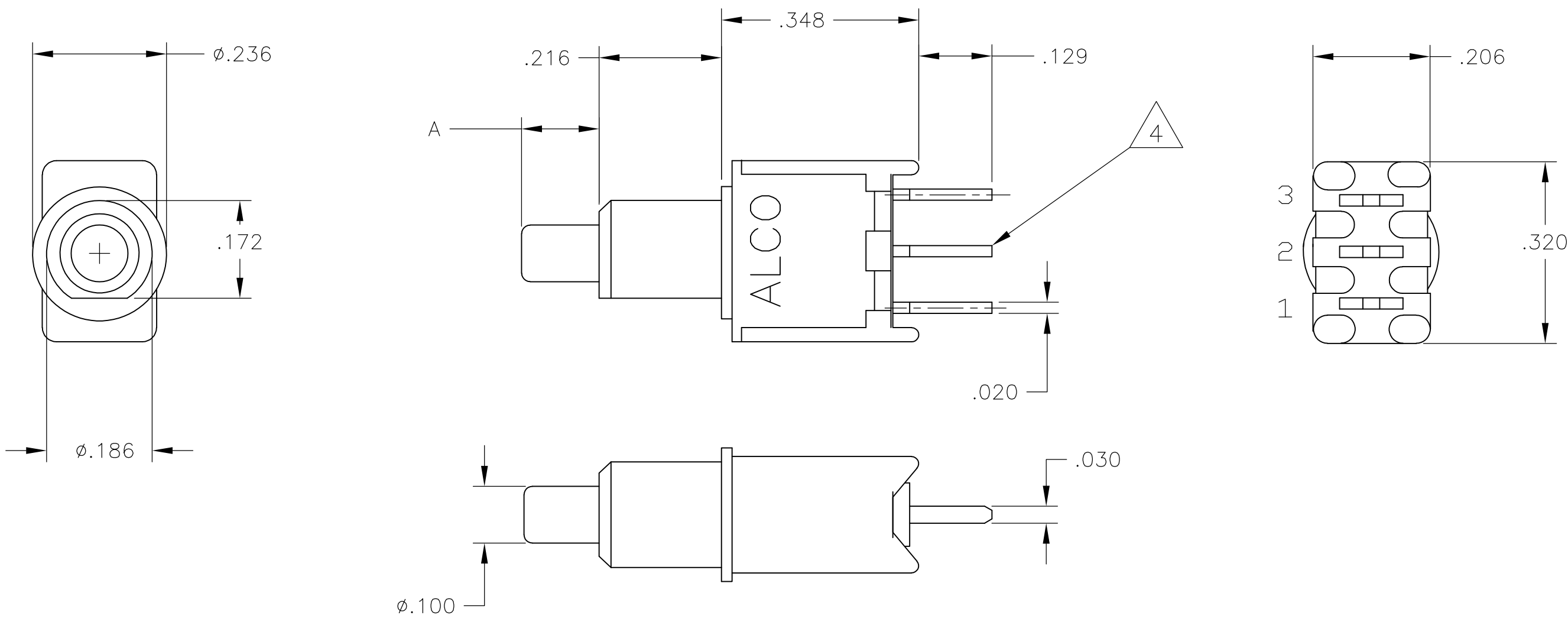
RESTRICTED TO

SCALE 4:1

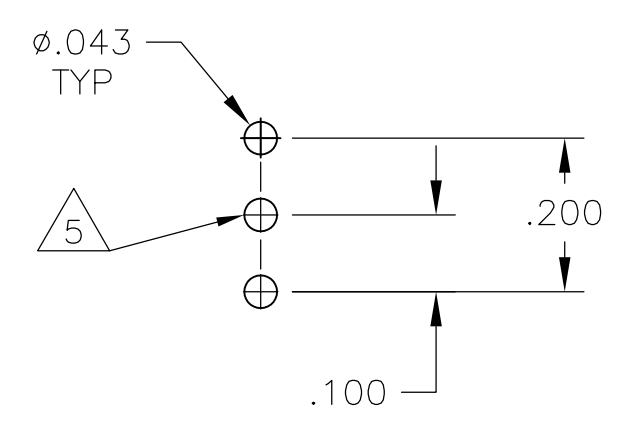
SHEET 1 OF 6

REV A2

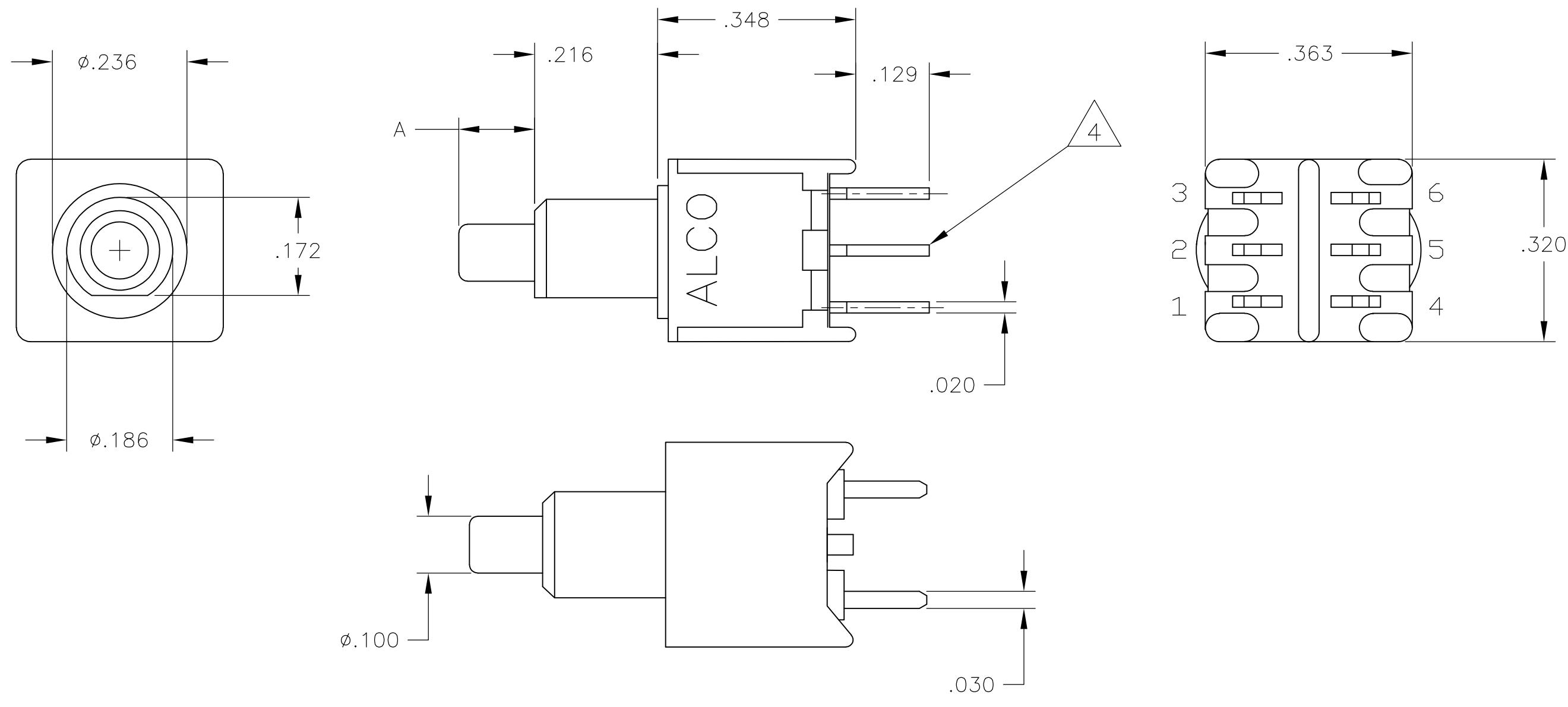
4805 (3/11)



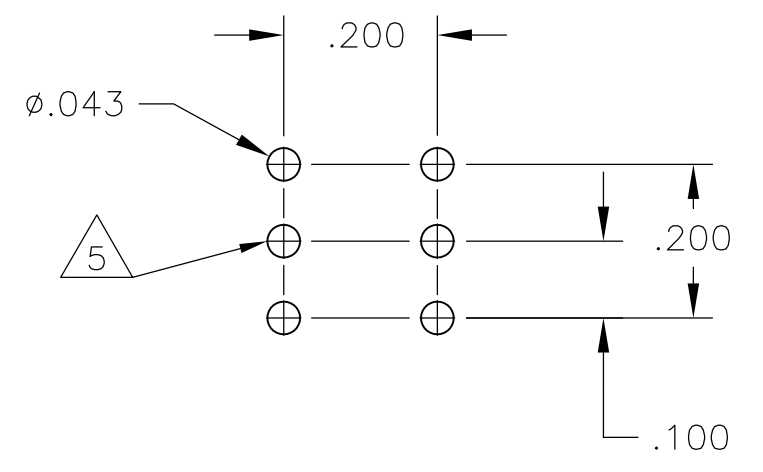
TPB11CGPC & TPB11F6PC



PCB HOLE LAYOUT

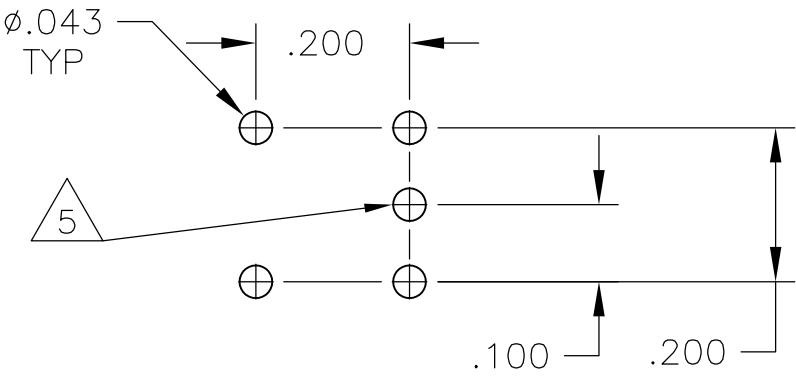
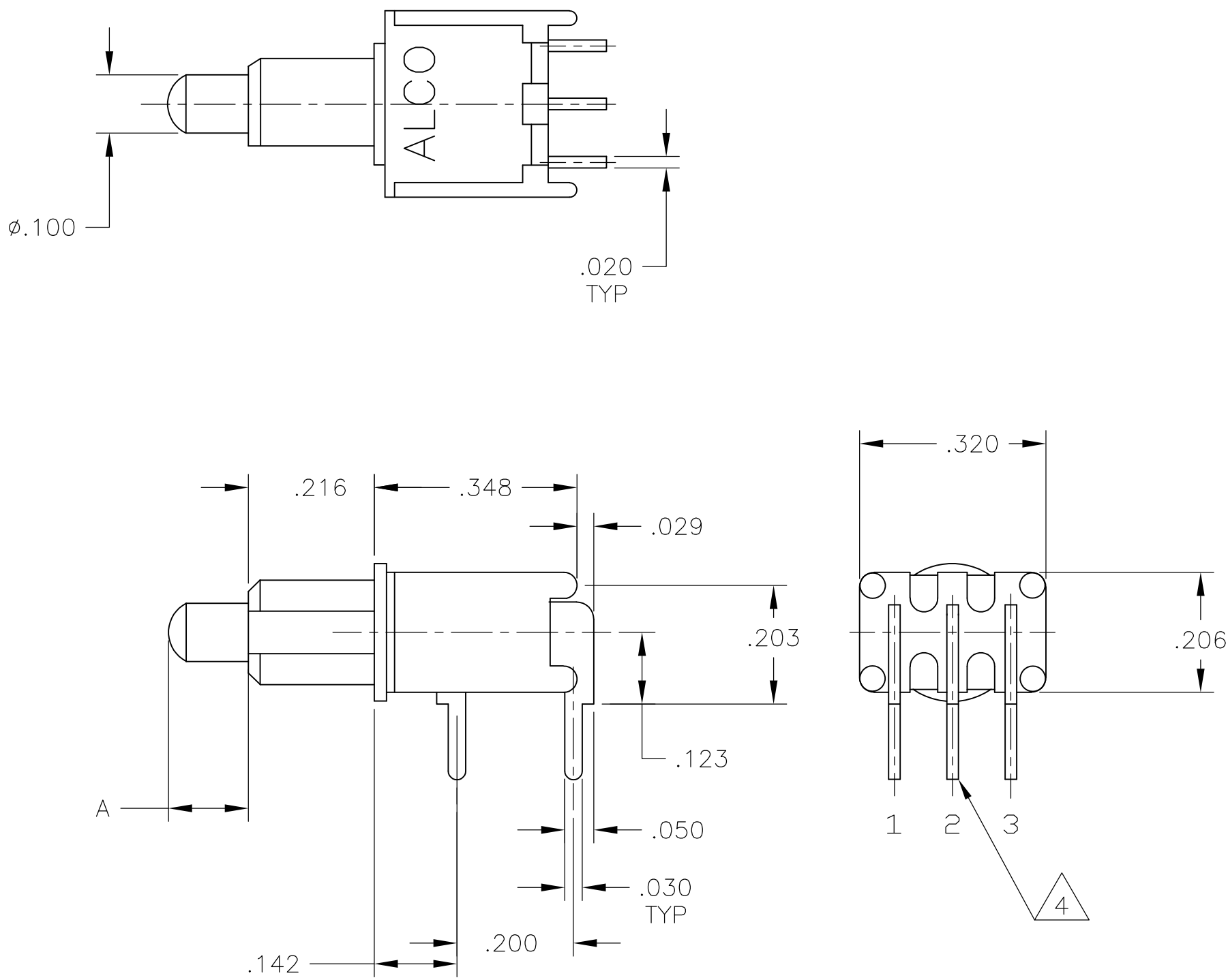
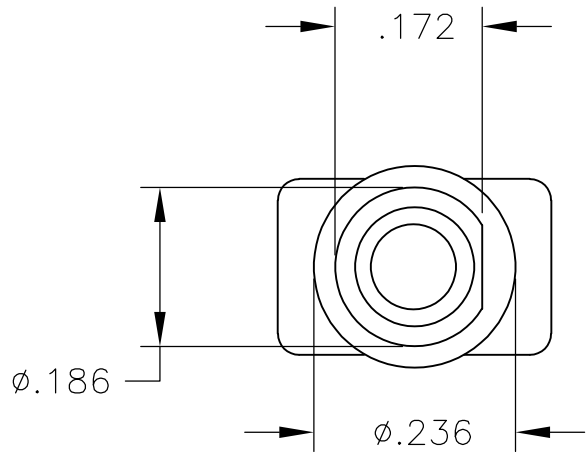


TPB21MGPC & TPB21RGPC

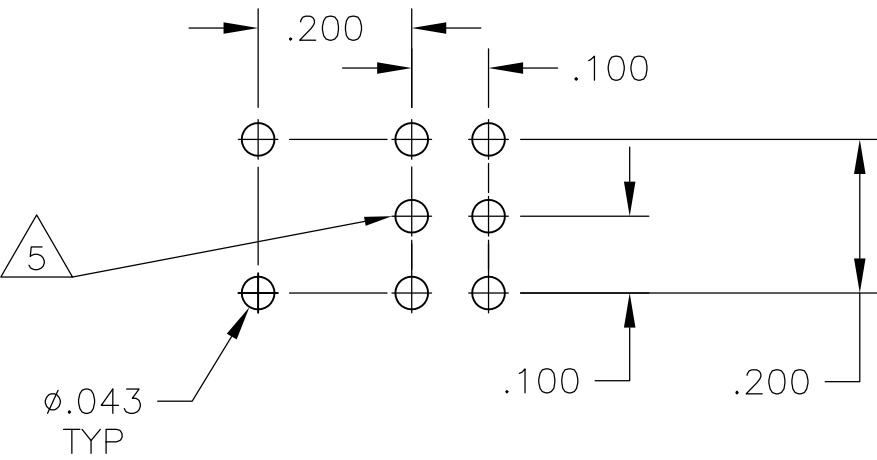
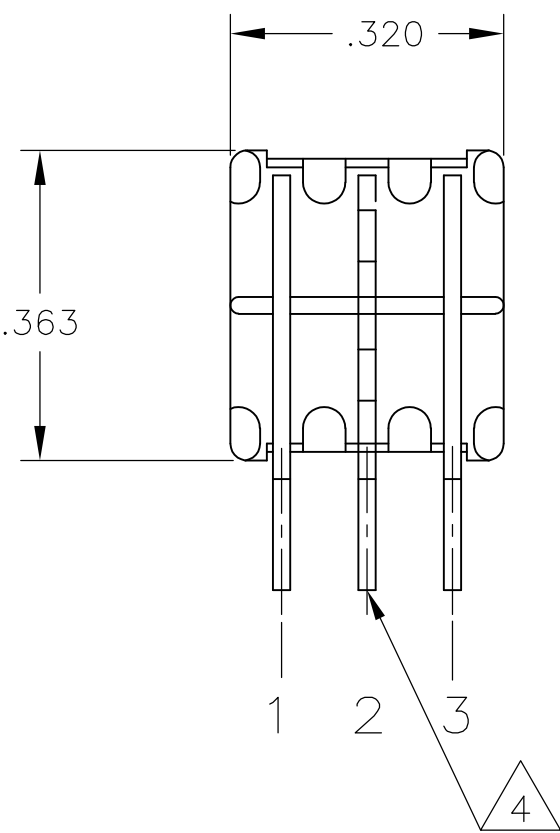
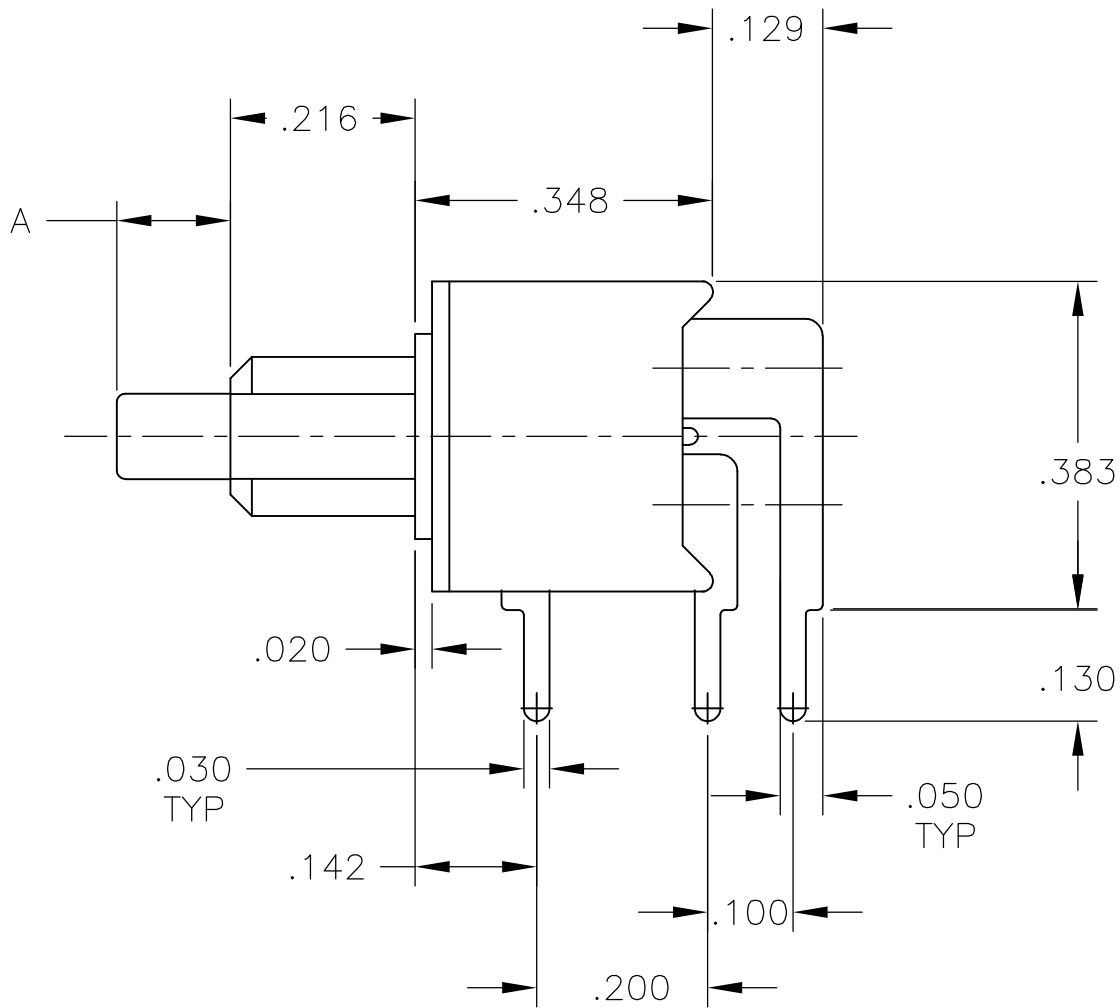
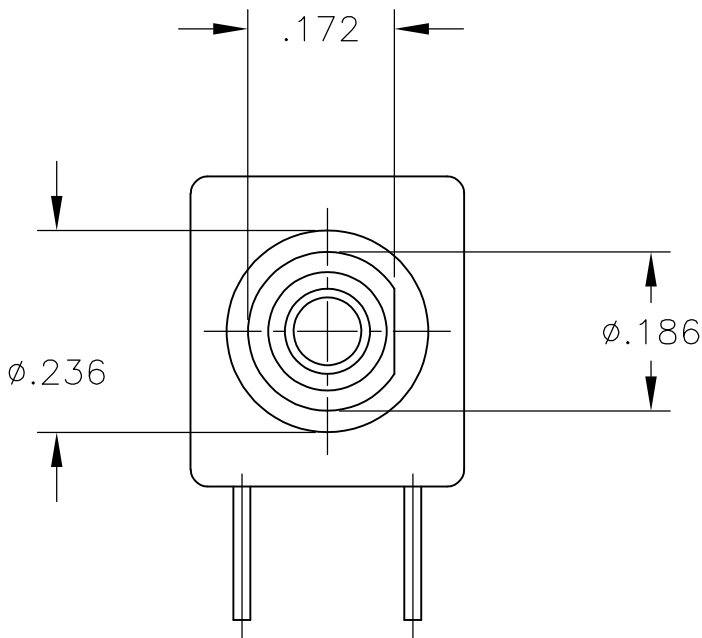
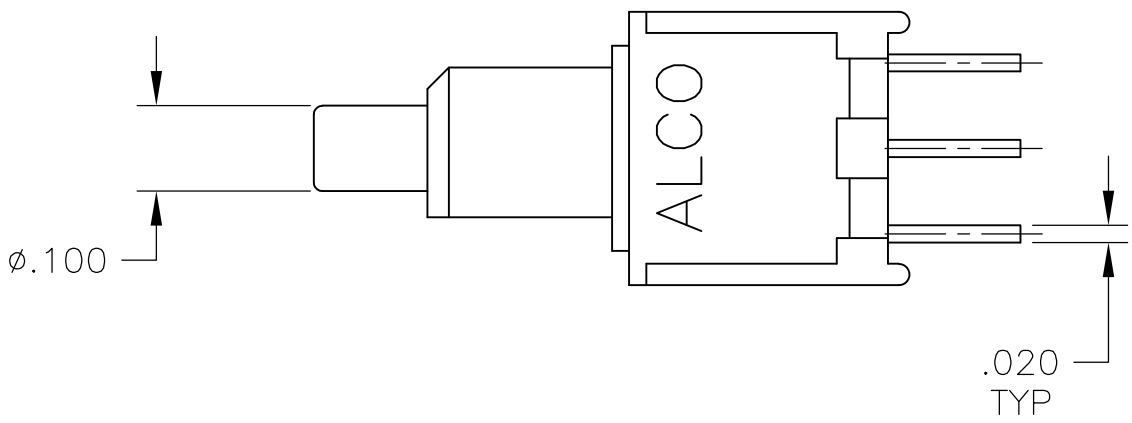


PCB HOLE LAYOUT

LOC		DIST		REVISIONS						
AD		—		P	LTR	DESCRIPTION	DATE	DWN	APVD	
			—	SEE SHEET 1				—	—	—



TPB11CGRA & TPB11FGRA
TPBF11CGRA & TPBF11FGRA

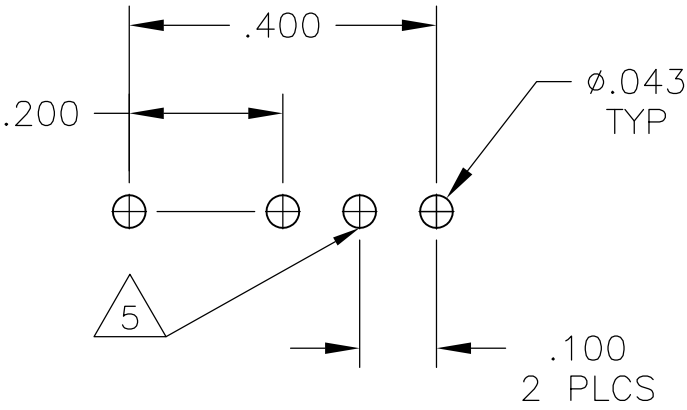
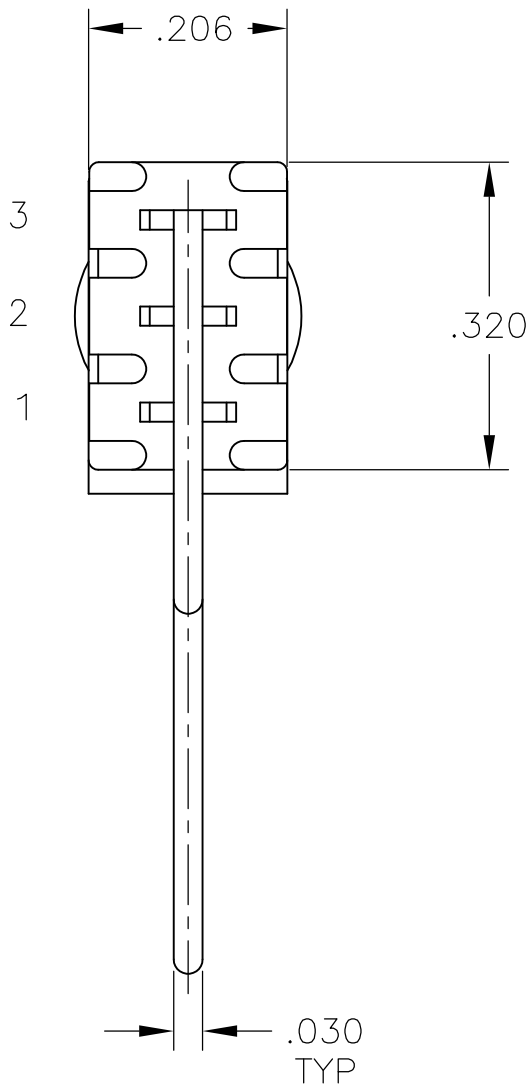
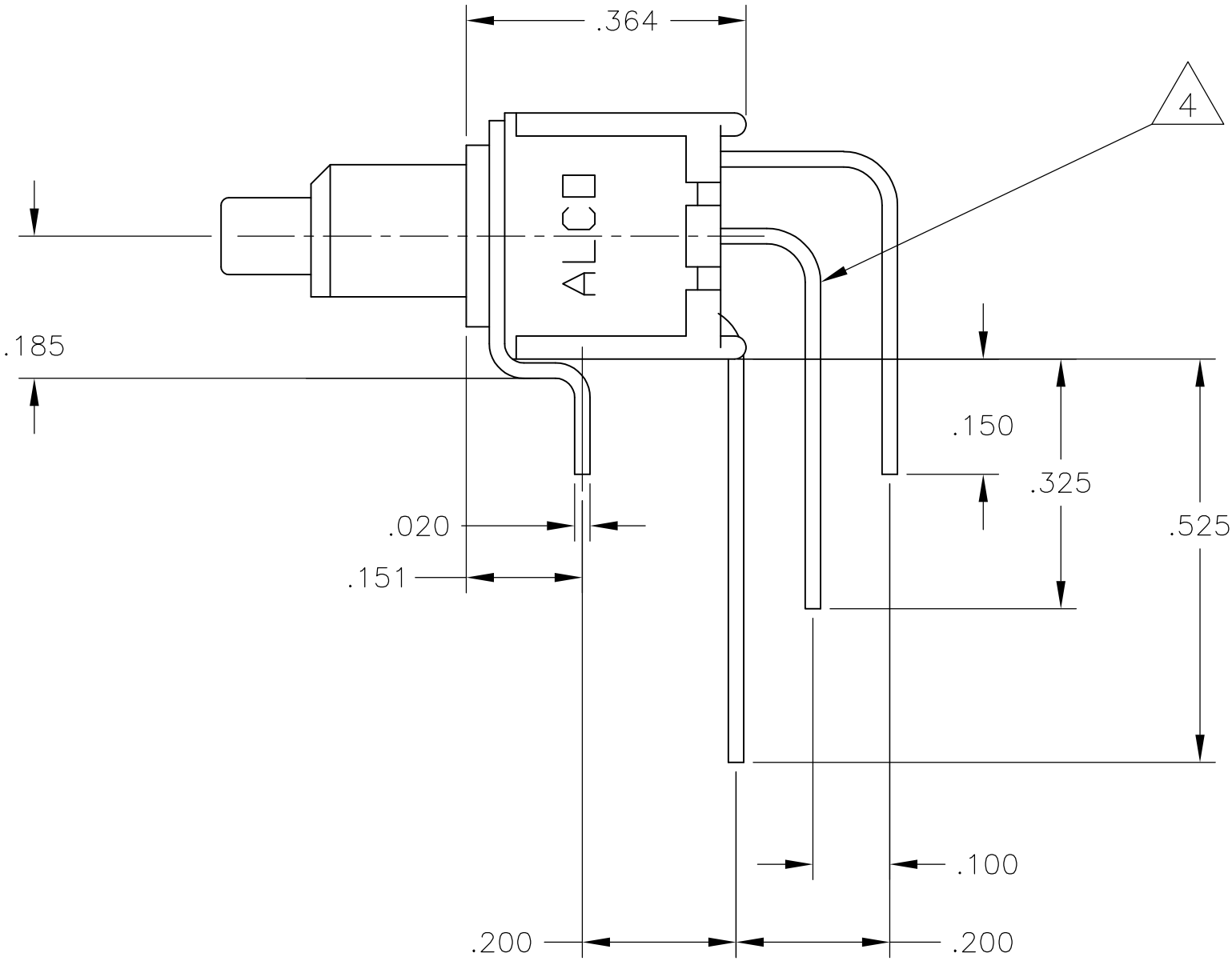
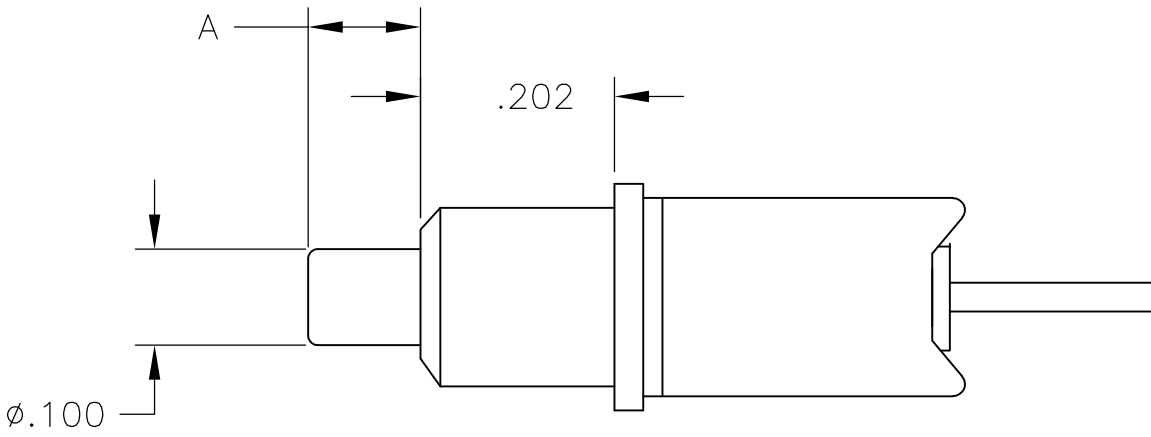
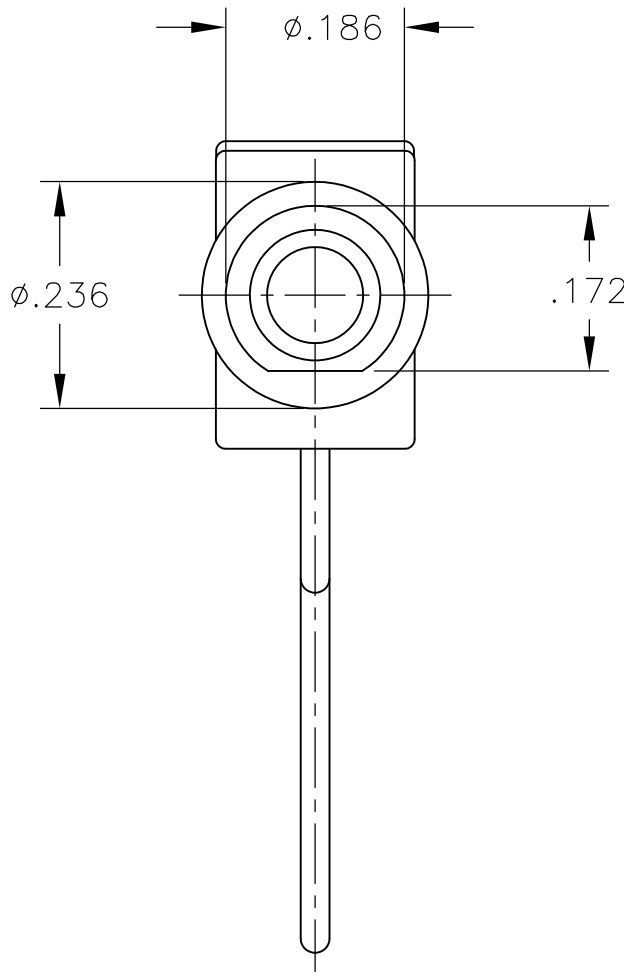


PCB HOLE LAYOUT

TPB21MGRA & TPB21RGRA

THIS DRAWING IS A CONTROLLED DOCUMENT.		DWN M. BINNER	20JUL05	TE Connectivity	
		CHK M. ZITTO	21JUL05		
DIMENSIONS: INCHES	TOLERANCES UNLESS OTHERWISE SPECIFIED:	APVD M. ZITTO	21JUL05	NAME PUSHBUTTON SWITCH, TPB SERIES	
		PRODUCT SPEC		—	
	0. PLC ± — 1. PLC ± — 2. PLC ± — 3. PLC ± .010 4. PLC ± — ANGLES ± —	APPLICATION SPEC		—	
		—		—	
MATERIAL	FINISH	WEIGHT	—	SIZE A1	
—	—	CAGE CODE 00779		DRAWING NO 1825097	
CUSTOMER DRAWING			SCALE 4:1	SHEET 3	OF 6
			REV A2		

LOC	DIST	REVISIONS					
		P	LTR	DESCRIPTION	DATE	DWN	APVD
AD	—		—	SEE SHEET 1	—	—	—

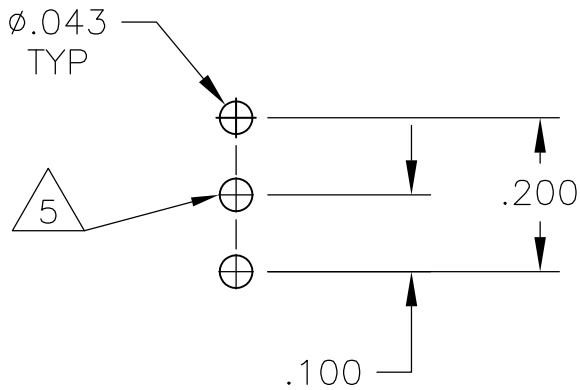


PCB HOLE LAYOUT

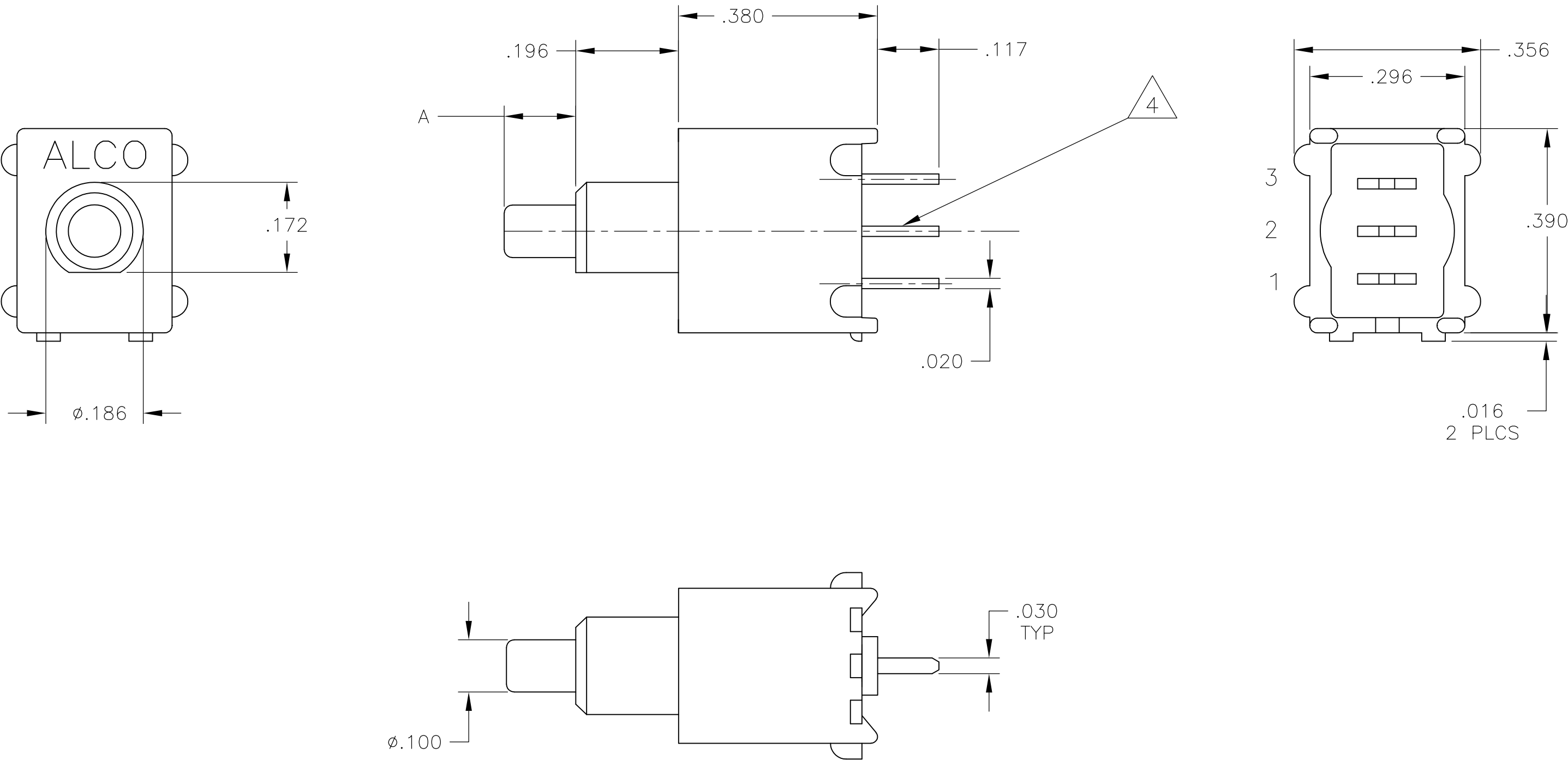
TPB11CVRA & TPB11FGVRA

THIS DRAWING IS A CONTROLLED DOCUMENT.		DWN M. BINNER 20JUL05	TE Connectivity	
DIMENSIONS: INCHES		CHK M. ZITTO 21JUL05		
	TOLERANCES UNLESS OTHERWISE SPECIFIED: 0. PLC ± .010 1. PLC ± .010 2. PLC ± .010 3. PLC ± .010 4. PLC ± .010 ANGLES ± .010	APVD M. ZITTO 21JUL05	NAME PUSHBUTTON SWITCH, TPB SERIES	
		PRODUCT SPEC	—	
		APPLICATION SPEC	—	
		—	—	
MATERIAL —	FINISH —	WEIGHT —	SIZE A1	CAGE CODE 00779
CUSTOMER DRAWING		DRAWING NO. 1825097	RESTRICTED TO —	—
SCALE 4:1		SHEET 4	OF 6	REV A2

LOC	DIST	REVISIONS				
AD	—	P	LTR	DESCRIPTION	DATE	OWN
		—	—	SEE SHEET 1	—	—



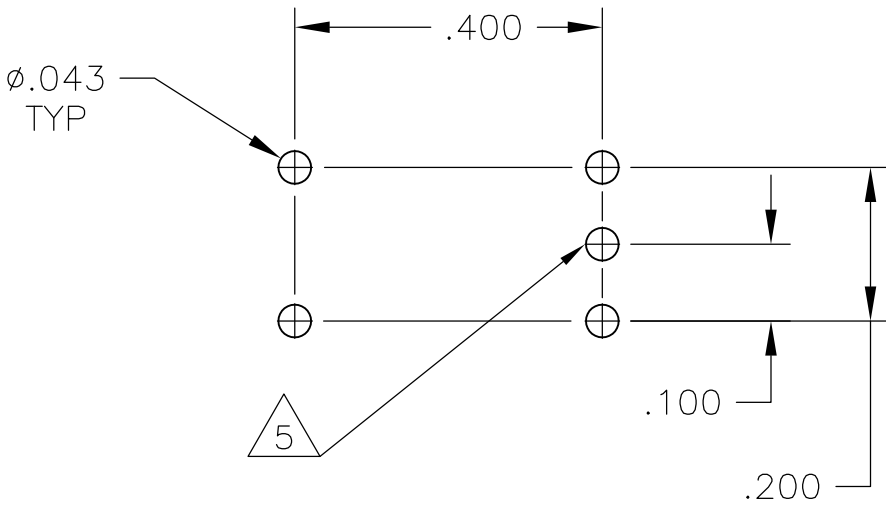
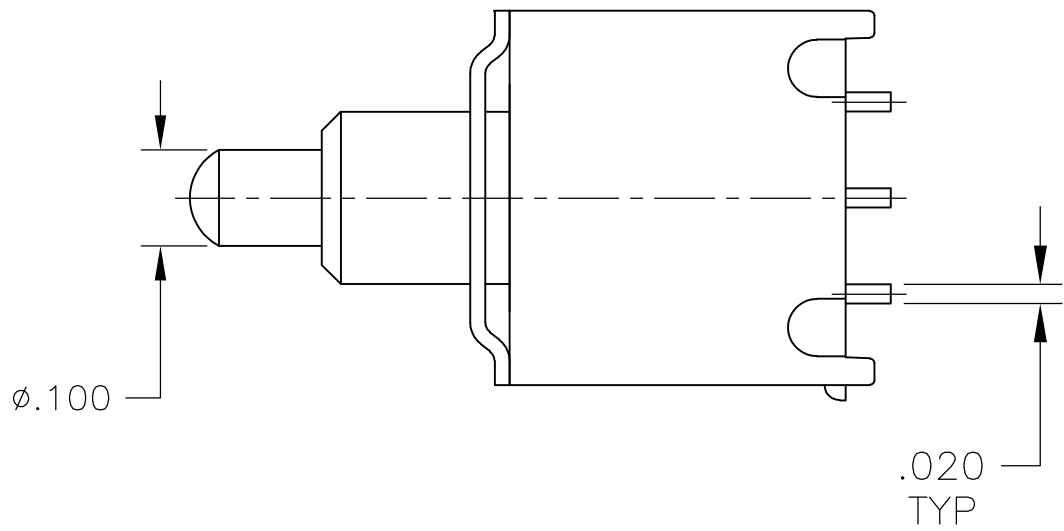
PCB HOLE LAYOUT



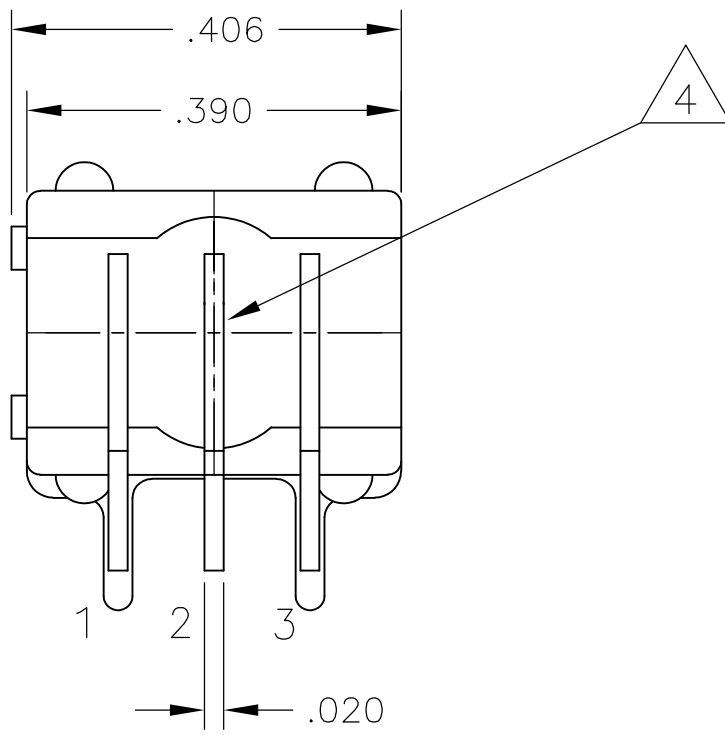
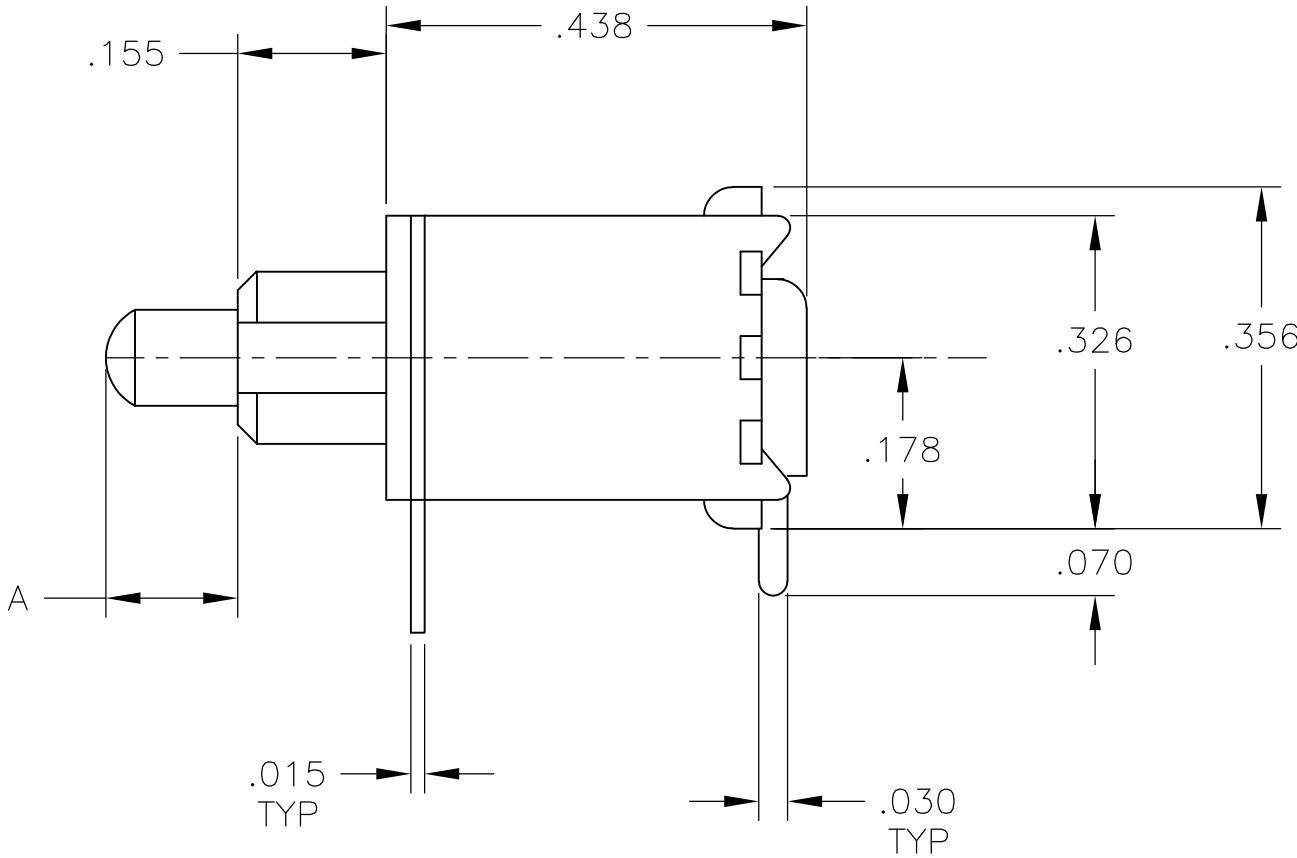
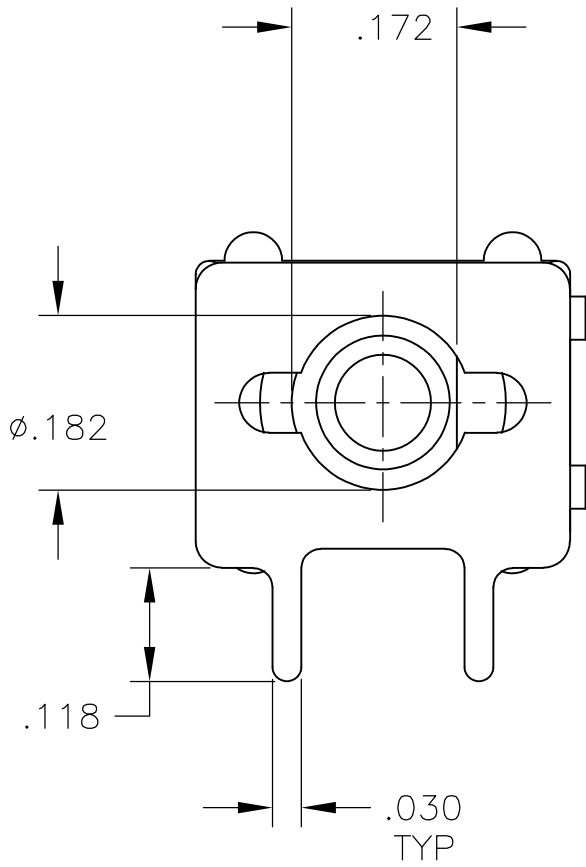
TPB11CGPCES & TPB11FGPCES
TPBF11CGPCES & TPBF11FGPCES

THIS DRAWING IS A CONTROLLED DOCUMENT.		DWN M. BINNER	20JUL05	TE Connectivity	
		CHK M. ZITTO	21JUL05		
DIMENSIONS: INCHES	TOLERANCES UNLESS OTHERWISE SPECIFIED:	AP'D M. ZITTO	21JUL05	NAME PUSHBUTTON SWITCH, TPB SERIES	
		PRODUCT SPEC		—	
	0. PLC ± .010 1. PLC ± .010 2. PLC ± .010 3. PLC ± .010 4. PLC ± .010 ANGLES ± .010	APPLICATION SPEC		—	
		—		—	
MATERIAL	FINISH	WEIGHT	—	RESTRICTED TO	
—	—	A1 00779 1825097		—	
CUSTOMER DRAWING			SCALE	4:1	SHEET 5 OF 6 REV A2

LOC	DIST	REVISIONS				
AD	—	REV	LTR	DESCRIPTION	DATE	DWN
		—	—	SEE SHEET 1	—	—



PCB HOLE LAYOUT



TPB11CGRAES & TPB11FGRAES
TPBF11CGRAES & TPBF11FGRAES

THIS DRAWING IS A CONTROLLED DOCUMENT.		DWN M. BINNER	20JUL05	TE Connectivity	
		CHK M. ZITTO	21JUL05		
DIMENSIONS: INCHES	TOLERANCES UNLESS OTHERWISE SPECIFIED:	APPROD M. ZITTO	21JUL05	NAME PUSHBUTTON SWITCH, TPB SERIES	
		PRODUCT SPEC		—	
	0. PLC ± — 1. PLC ± — 2. PLC ± — 3. PLC ± .010 4. PLC ± — ANGLES ± —	APPLICATION SPEC		—	
		—		—	
MATERIAL —	FINISH —	WEIGHT —	A1 00779 1825097		RESTRICTED TO —
CUSTOMER DRAWING			SCALE 4:1	SHEET 6 OF 6	REV A2

Mouser Electronics

Authorized Distributor

Click to View Pricing, Inventory, Delivery & Lifecycle Information:

[TE Connectivity:](#)

[TPB11CGPC004](#)