

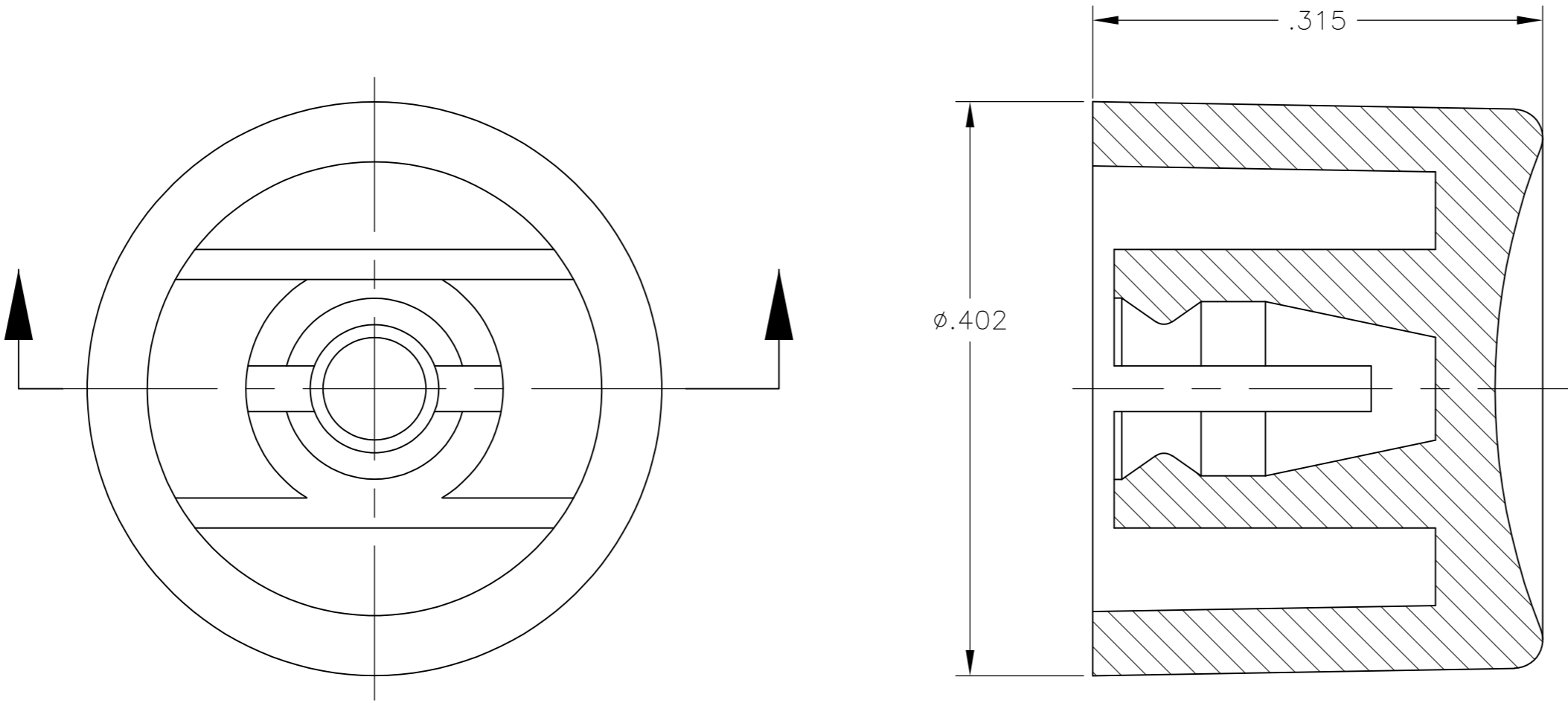
THIS DRAWING IS UNPUBLISHED.

RELEASED FOR PUBLICATION



© COPYRIGHT - By - ALL RIGHTS RESERVED.

LOC	DIST	REVISIONS					
AD	00	P	LTR	DESCRIPTION	DATE	DWN	APVD
			A2	REVISED PER ECO-14-016841	07NOV2014	NK	RH

- 1
- MATERIAL SHALL COMPLY WITH EU DIRECTIVE 2002/95/EC OF 20JAN2003 (ROHS)
- 2
- CAP FOR USE WITH GREEN SERIES PUSHBUTTON SWITCHES AS SHOWN ON DRAWINGS 4-1437567-3 AND 2-1437567-9



WHITE	C22904	1825068-7
BLUE	C22604	1825068-6
GREEN	C22504	1825068-5
YELLOW	C22404	1825068-4
ORANGE	C22304	1825068-3
RED	C22204	1825068-2
BLACK	C22004	1825068-1
COLOR	ALCO PART NUMBER	PART NUMBER

THIS DRAWING IS A CONTROLLED DOCUMENT.		DWN M.BINNER 30NOV04		 TE Connectivity	
		CHK M.ZITTO 30NOV04			
DIMENSIONS: INCHES		APVD M.ZITTO 30NOV04		NAME CAP, GREEN SERIES, PUSHBUTTON, C22	
		PRODUCT SPEC —			
		APPLICATION SPEC —		SIZE A2	
MATERIAL POLYAMIDE		FINISH —		CAGE CODE 00779	
		WEIGHT —		DRAWING NO C=1825068	
		CUSTOMER DRAWING		RESTRICTED TO —	
				SCALE 10:1	
				SHEET 1 of 1	
				REV A2	

Mouser Electronics

Authorized Distributor

Click to View Pricing, Inventory, Delivery & Lifecycle Information:

[TE Connectivity:](#)

[C22004](#)