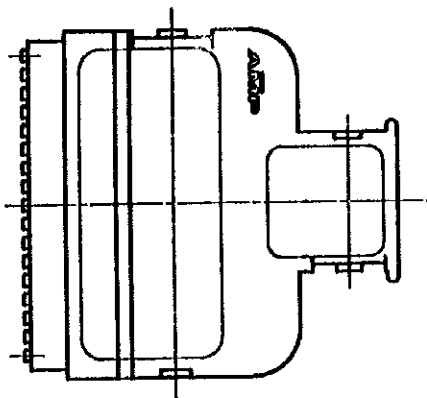
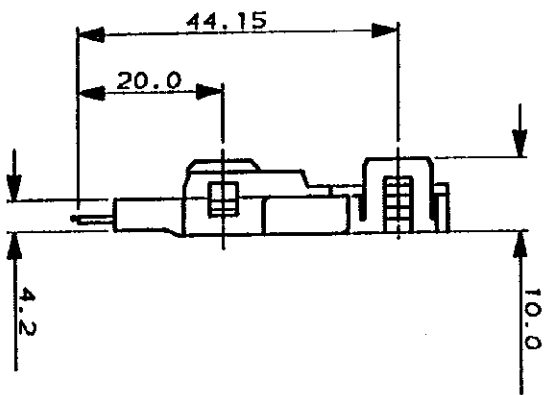
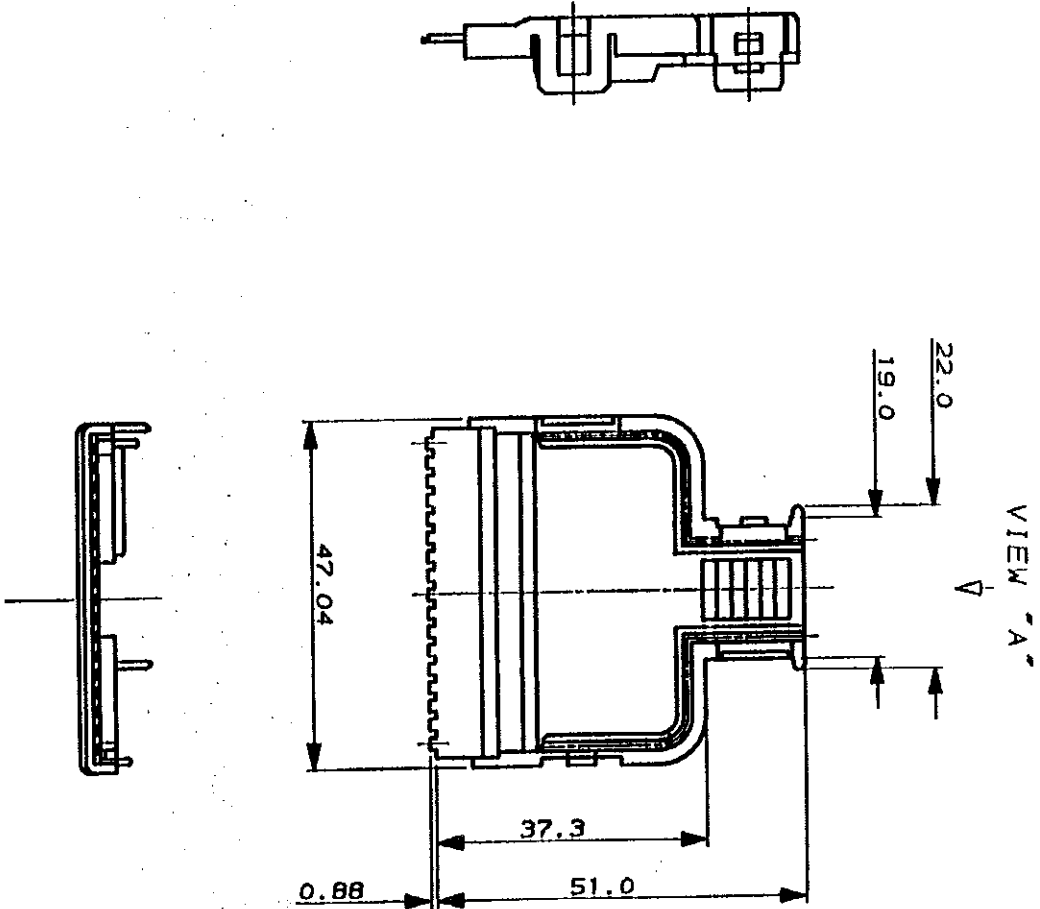
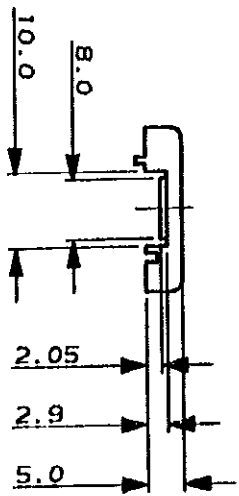


DIMENSIONS IN MILLIMETERS. DO NOT SCALE PRINT

PRINT DIST

AMP-J
REV. 10/83



-1; A5 SHOWN
-1; ☒

© 1988 BY AMP (Japan) LTD. ALL RIGHTS RESERVED. AMP PRODUCTS COVERED BY PATENTS AND OR PATENTS PENDING		AMP AMP (JAPAN) LTD. Tokyo, Japan	
WIRE RANGE #16 - #22 (AWG)		INSULATION DIA 7.1 - 9.0 mmφ	
MATERIAL #16 - #22 (AWG)		FINISH #16 - #22 (AWG)	
DR. <i>H. Akiyama</i> 4/28/89 DE. <i>H. Akiyama</i> 4/28/89		GENERAL TOLERANCE 0-6.3 : ±0.2 10-6.3 : ±0.25 30-6.3 : ±0.3 ANGLES : ±3°	
NAME CABLE COVER 34P		SIZE LOC NUMBER A3 J C-175600	
CABLE COVER 34P		5-200 CONN. SYSTEM (W-T-B)	
LTR		SCALE 1-1	
REVISION RECORD		REV. A	
DR		SHEET 1 OF 1	
CHK			
DATE			
CHK. <i>T. Sasaki</i> 4/27/89			

CUSTOMER DRAWING

Mouser Electronics

Authorized Distributor

Click to View Pricing, Inventory, Delivery & Lifecycle Information:

[TE Connectivity:](#)

[175600-1](#)