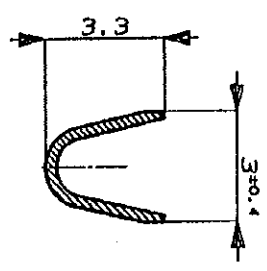
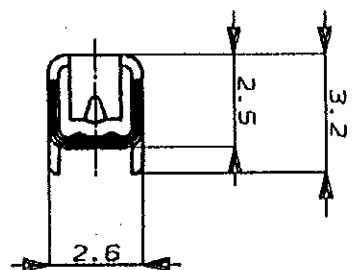
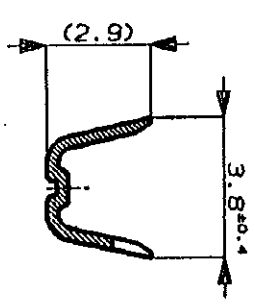


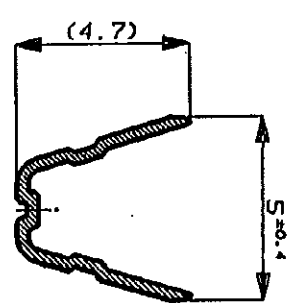
単位: mm DIMENSIONS IN MM. DO NOT SCALE PRINT



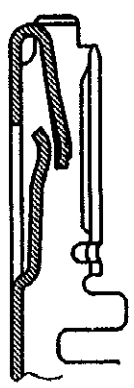
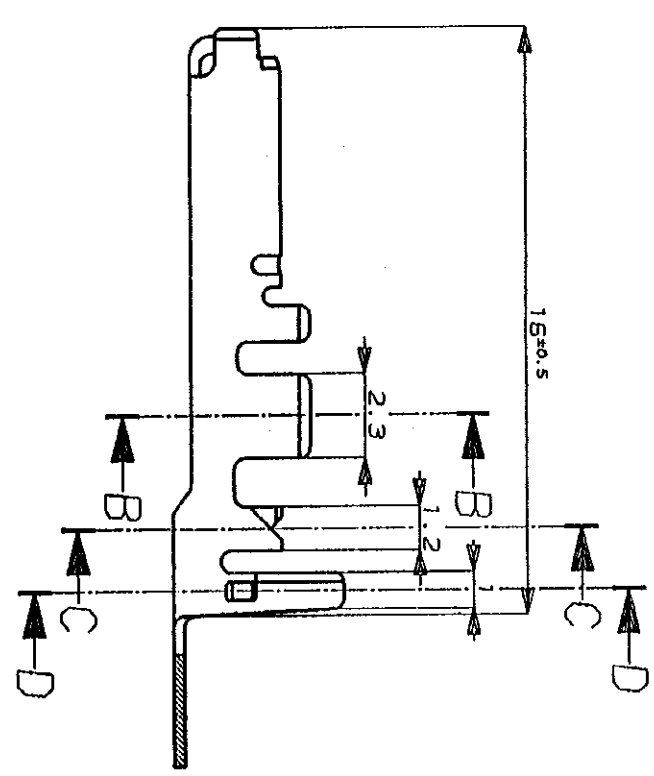
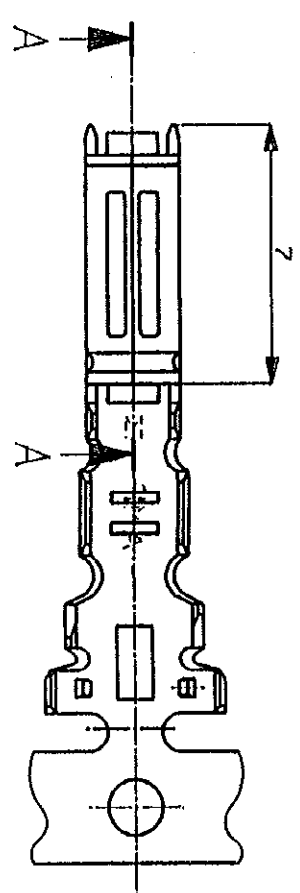
断面 B-B
SECT. B-B



断面 C-C
SECT. C-C



断面 D-D
SECT. D-D



断面 A-A
SECT. A-A

LTR	変更	REVISION RECORD	DR	CHK	DATE
0	作成	(7-1380)	YK	8/28/92	

Copyright ©1992 AMP (Japan), LTD. ALL RIGHTS RESERVED.	Copyright ©1992 AMP (Japan), LTD. ALL RIGHTS RESERVED.
0.55-1.25mm (AWG#20-#18)	1.2-1.9 mm
材料 (MATERIAL)	仕上 (FINISH)
BRASS, 板厚 0.25	表参照
DR. Y. Murakami	DE. Y. Murakami
CHK. P. Sakai	APP. P. Sakai

規格 (NAMED)	.070 SERIES RECEPTACLE
一般公差 (GENERAL TOLERANCES)	10μm ±0.2 100μm ±0.25 300μm ±0.3
公差 (TOLERANCES)	10μm ±0.2 100μm ±0.25 300μm ±0.3
公差 (TOLERANCES)	10μm ±0.2 100μm ±0.25 300μm ±0.3

PRE-TINNED	錫めっき済	175095-1
FINISH	仕上げ	AMP PART NO. 製品型番

注:
1. 圧着規格 114-5134

NOTES;
1. CRIMP SPEC. 114-5134

Mouser Electronics

Authorized Distributor

Click to View Pricing, Inventory, Delivery & Lifecycle Information:

[TE Connectivity:](#)

[175095-1](#) [175095-1 \(Mouser Reel\)](#)