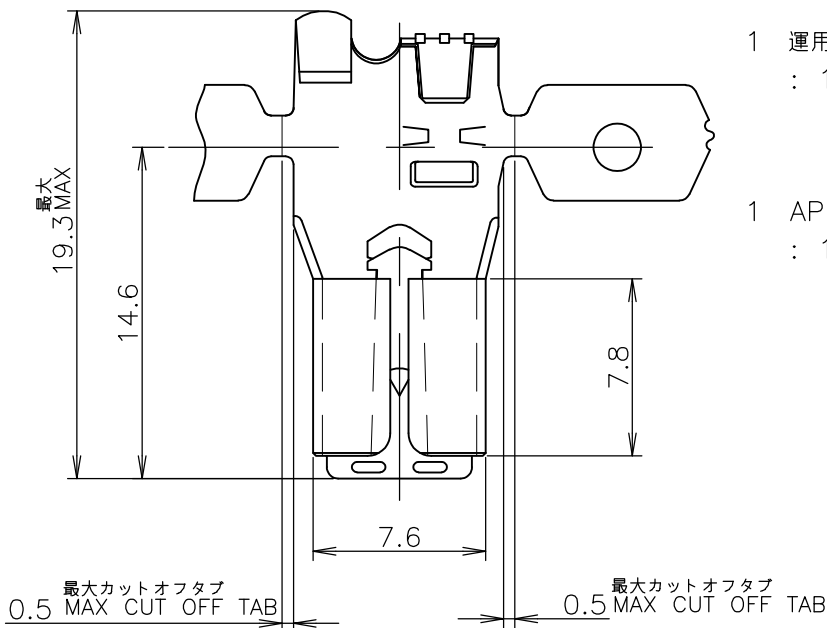


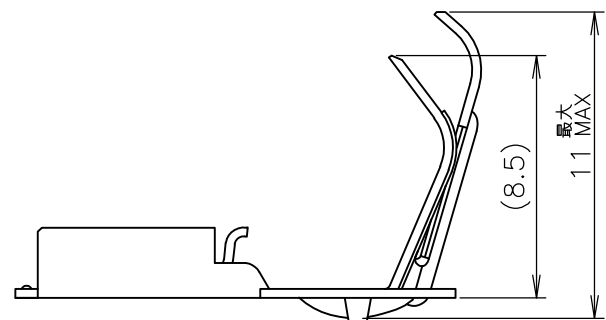
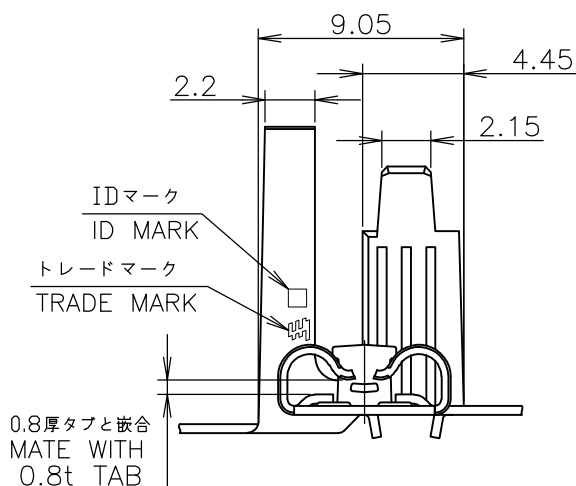
| LOC | DIST | REVISIONS 変更 | | | | DATE | DWN | APVD |
|-----|------|-----------------|---------------------------|--|--|------|---------|--------|
| P | LTR | DESCRIPTION | | | | | | |
| J | | D1 | REVISED PER ECO-11-005030 | | | | 11MAR11 | RK HMR |

-1, -2; AS SHOWN



1 運用スリーブ型番
: 1717268-X, 176497-X, 2013799-X

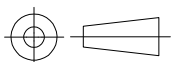
1 APPLICABLE SLEEVE P/N
: 1717268-X, 176497-X, 2013799-X



| | | |
|----------------------------|--|-----------|
| LOOSE PIECE NO. ばら状端子型番 | PRE TIN COPPER ALLOY 0.4t 錫めっき付銅合金 0.4t | 175057-2 |
| | PRE TIN BRASS 0.4t 錫めっき付 黄銅 0.4t | 175057-1 |
| | MATERIAL 材料 | P/N 型番 |

| | | | |
|-----------------------|--|------------------------|-------------|
| WIRE RANGE 包合電線断面積 | AWG #18-#12 0.75~3.37 mm ² | INSULATION DIA 被覆外径 | 2.8~4.1 mmφ |
|-----------------------|--|------------------------|-------------|

| | | | | | | |
|---|--|-----------|---|--------------------|------------------------------|--------------------|
| DIMENSIONS: 単位: 耗 mm | DWN J.SATO | 15NOV2007 | MATERIAL 材料 表参照 SEE TABLE | | FINISH 仕上 | |
| | CHK S.MANABE | 15NOV2007 | <div>TE Connectivity</div> | | | |
| TOLERANCES UNLESS OTHERWISE SPECIFIED: 一般公差 | APVD S.MANABE | 15NOV2007 | | | | |
| 0 PLC ± 1 PLC ± 10 ≥: ±0.2 2 PLC ± 30 ≥ > 10: ±0.25 3 PLC ± 100 ≥ > 30: ±0.3 4 PLC ± ANGLES ± 3° | PRODUCT SPEC 製品規格 108-5254 | | NAME 名称 250 SERIES FLAG POSITIVE LOCK EX 250 シリーズ 旗型ポジティブロックEX | | | |
| | APPLICATION SPEC 取付適用規格 114-5122 | | | | | |
| | WEIGHT | | SIZE A4 | CAGE CODE 00779 | DRAWING NO 番号 C-175057 | RESTRICTED TO — |
| | CUSTOMER DRAWING | | SCALE 尺度 NTS | SHEET 1 of 1 | REV D1 | |



Mouser Electronics

Authorized Distributor

Click to View Pricing, Inventory, Delivery & Lifecycle Information:

[TE Connectivity:](#)

[175057-1 \(Loose Piece\)](#)