

NOTES
BEMERKUNGEN

1

APPLICATION TOOL FEED 8.0±0.05

2

MARKING CRIMP CODE "A" FOR WIRE SIZE 0.22-0.35mm²
MARKING CRIMP CODE "B" FOR WIRE SIZE 0.5-0.75mm²
MARKING CRIMP CODE "C" FOR WIRE SIZE 0.13mm²

3

OPTIMOL (UNDILUTED) LUBRICATION IN THIS AREA

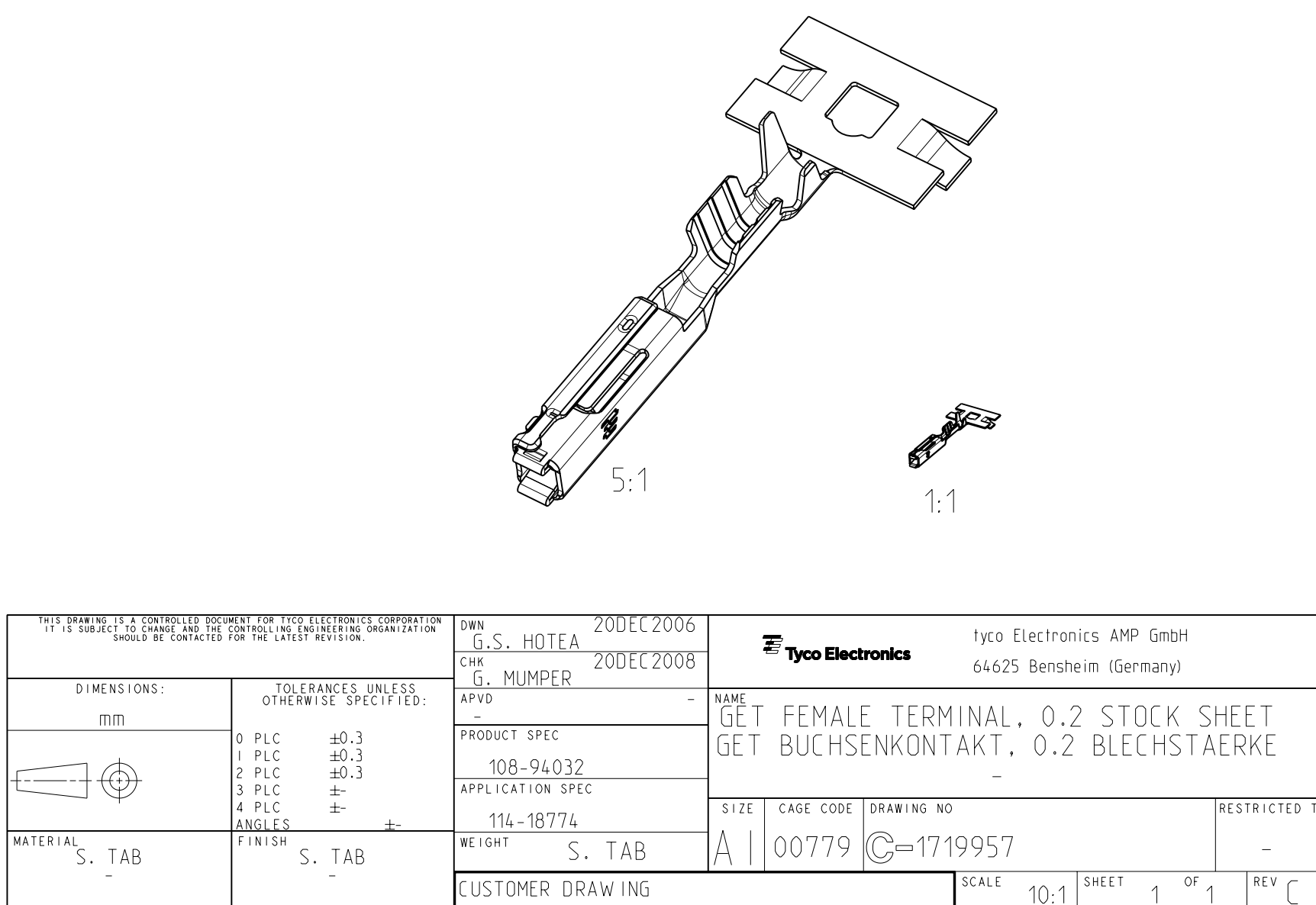
4

FEMALE TERMINALS SHOULD ALWAYS BE USED WITH PINS/MALE TERMINALS WITH THE SAME PLATING MATERIAL

5

DIMENSION APPLY TO ALL PART NUMBERS

TIN HOT DIPPED 1-3µm	COPPER ALLOY	0.22	C	0.13mm ² ISO6722 THINN WALL	0-1564880-1	C
TIN HOT DIPPED 1-3µm	COPPER ALLOY	0.24	B	0.5-0.75mm ² /AWG 18-20	0-1719958-1	B
TIN HOT DIPPED 1-3µm	COPPER ALLOY	0.23	A	0.22-0.35mm ² /AWG 22	0-1719957-1	B
PLATING	MATERIAL	WEIGHT g	CRIMP CODE	CONDUCTOR WIRE SIZE	TE PART NO	TE PART REV.



Mouser Electronics

Authorized Distributor

Click to View Pricing, Inventory, Delivery & Lifecycle Information:

[TE Connectivity:](#)

[1719957-1](#) [1719957-1 \(Loose Piece\)](#)